

Model No. EE-6604B/EE-6604S

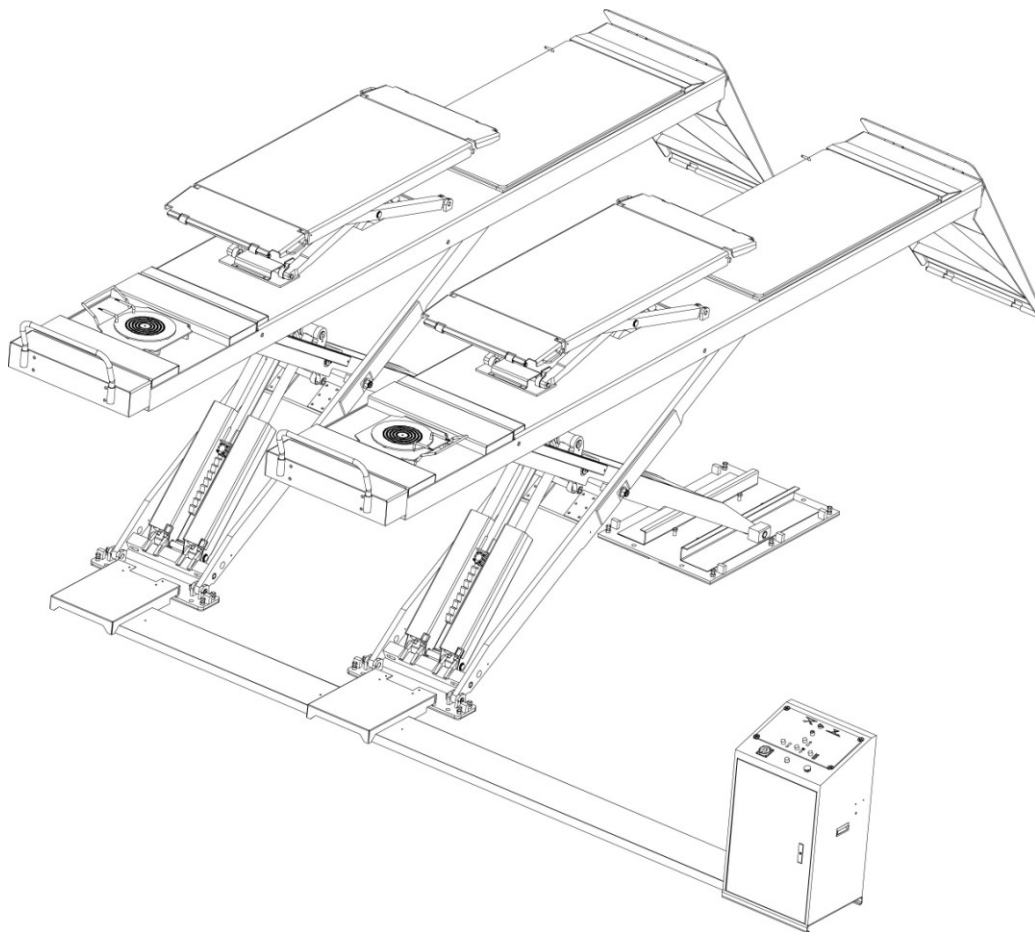
Long platform scissor lift, Low Profile
Electrical Leveling
Lifting Capacity 4000KG

Installation, Operation and Parts Manual



EverLift

VEHICLE LIFT SPECIALIST



Distributed by

EAE

www.eae-ae.com

Please read this entire manual carefully and completely before installation or operation of the lift.

INDEX

1. Important safety instructions.....	3~4
1.1 Important notices	
1.2 Qualified personnel	
1.3 Danger notices	
1.4 Training	
1.5 Warning signs	
2. Overview of the lift.....	5~6
2.1 General descriptions	
2.2 Safety structure	
2.3 Technical data	
2.4 Construction of the lift	
3. Installation instructions.....	7~13
3.1 Preparations before installation	
3.1.1 Tools and equipments needed	
3.1.2 A list for parts checking	
3.1.3 Ground conditions	
3.2 Precautions for installation	
3.3 Installation	
3.4 Items to be checked after installation	
4. Operation instructions.....	14~15
4.1 Precautions	
4.2 Descriptions of control panel	
4.3 Flow chart for operation	
4.4 Operating instructions	
5. Trouble shooting.....	16
6. Maintenance.....	17
7. Annex.....	18~39
Annex1, Packing list of the whole lift	
Annex2, Overall diagram	
Annex3, Hydraulic working system	
Annex4, Diagram for air supply connection	
Annex5, Wiring diagram	
Annex6, Separated drawings for the lift	
Annex7, Spare parts list	

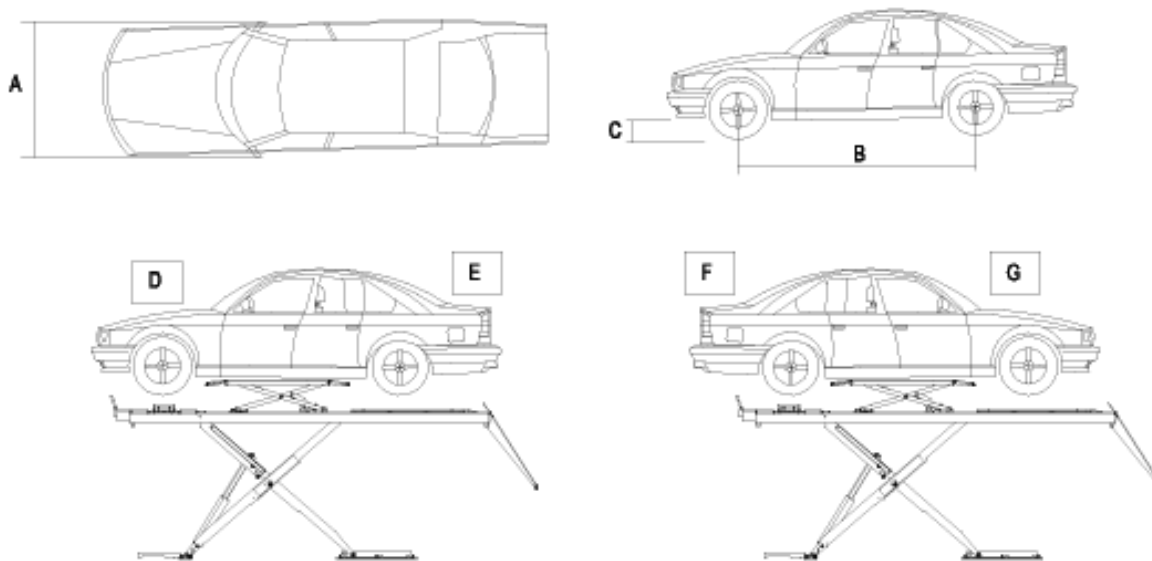
IMPORTANT SAFETY INSTRUCTIONS

1.1 Important notices

We will offer one-year's quality warranty for the whole machine, during which any quality problem will be properly solved. However, we will not take any responsibility for whatever bad consequence resulted from improper installation and operation, overload running or unqualified ground condition.

This model is specially designed for lifting motor vehicles that weighs within its outmost lifting capacity. Users are not allowed to use it for any other purposes. Otherwise, we, as well as our sales agency, will not bear any responsibility for accidents or damages of the lift.

Make sure to pay careful attention to the label of the lifting capacity attached on the lift and never try to lift cars with its weight beyond.



(mm)	(mm)	(T)	(T)	(T)	(T)
2400	3000	2.4T	1.6T	1.6T	2.4T

Read this manual carefully before operating the machine so as to avoid economic loss or personnel casualty incurred by wrong operation.

Without our professional advice, users are not permitted to make any modification to the control unit or whatever mechanical unit.

1.2 Qualified personnel

1.2.1 Only these qualified staff, who have been properly trained, can operate the lift.

1.2.2 Electrical connection must be done by a competent electrician.

1.2.3 People who are not concerned are not allowed in the lifting area.

1.3 Danger notices

1.3.1 Do not install the lift on any asphalt surface.

1.3.2 Read and understand all safety warnings before operating the lift.

1.3.3 Do not leave the controls while the lift is still in motion.

1.3.4 Keep hands and feet away from any moving parts. Keep feet clear of the lift when lowering.

1.3.5 Only these properly trained personnel can operate the lift.

- 1.3.6 Do not wear unfit clothes such as large clothes with flounces, tires, etc, which could be caught by moving parts of the lift.
- 1.3.7 To prevent evitable incidents, surrounding areas of the lift must be tidy and with nothing unconcerned.
- 1.3.8 The lift is simply designed to lift the entire body of vehicles, with its maximum weight within the lifting capacity.
- 1.3.9 Always insure the safety locks are engaged before any attempt to work near or under the vehicle. Never remove safety related components from the lift. Do not use if safety related components are damaged or missing.
- 1.3.10 Do not rock the vehicle while on the lift or remove any heavy component from vehicle that may cause excessive weight shift.
- 1.3.11 Check at any time the parts of the lift to ensure the agility of moving parts and the performance of synchronization. Ensure regular maintenance and if anything abnormal occurs, stop using the lift immediately and contact our dealers for help.
- 1.3.12 Lower the lift to its lowest position and do remember to cut off the power source when service finishes.
- 1.3.13 Do not modify any parts of the lift without manufacturer's advice.
- 1.3.14 If the lift is going to be left unused for a long time, users are required to:
- Disconnect the power;
 - Empty the oil tank;
 - Lubricate the moving parts with hydraulic oil.

1.4 Training

Only these qualified people, who have been properly trained, can operate the lift. We are quite willing to provide professional training for the users when necessary.

Attention: For environment protection, please dispose the disused oil in a proper way.

1.5 Warning signs

All safety warning labels are clearly depicted on the lift to ensure that the operator is aware of and avoids the dangers of using the lift in an incorrect manner. The labels must be kept clean and they have to be replaced if detached or damaged. Please read carefully the meaning of each label and memorize them for future operation

CAUTION		WARNING		
				
Never stand, work or be under the lift while it is being operated.	The operator should not stand too close to the lift but in a safe position away from moving parts.	When the lift is lowered, no auxiliary stand or other blocking objects should be near the lift.	Do not shake or push the vehicle whilst it is on the lift.	Only trained technicians are permitted to operate this lift.
				
Ensure feet and other parts of your body are well clear of the lift when it is being lowered or when lifting.	Never try to lift or lower only 1 platform.	Do not change, tamper or interfere with the safety mechanisms of this lift.	Ensure that the lifting weight of the vehicle is balanced on both platforms to avoid tilting or sliding.	
				
Always keep the lifts pit clean and clear of any objects or contaminants.	Please read and study the operation manual carefully before operating this lift.	Keep the vehicle parallel with the platform lifts at all times.	High voltage in control box, take extreme caution here.	

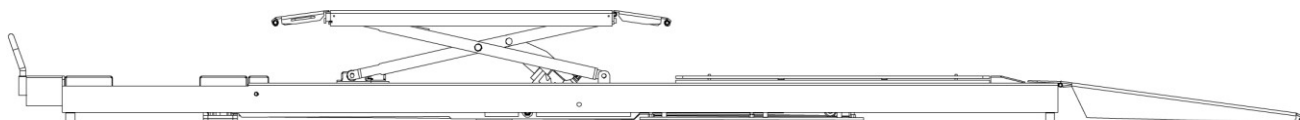
OVERVIEW OF THE LIFT

2.1 General descriptions

This model is surface mounted and is mainly composed by two lifting platforms, two base plates, four oil cylinders and a set of power unit. The gear pump works when power supply is connected and meanwhile oil in the pump will push upwards the pistons of oil cylinders. Thus, scissor brackets of the lift rise accordingly. In the process of rising, the mechanical lock will automatically engaged so as to avoid sudden drop down caused by failure of hydraulic system.

Besides, designs like, 24V working voltage of control box and limit switch, low-height alarming buzzer, anti-surge valves, etc have fully considered your personal security.

For EE-6604 series, there are type S and type B for different choice.

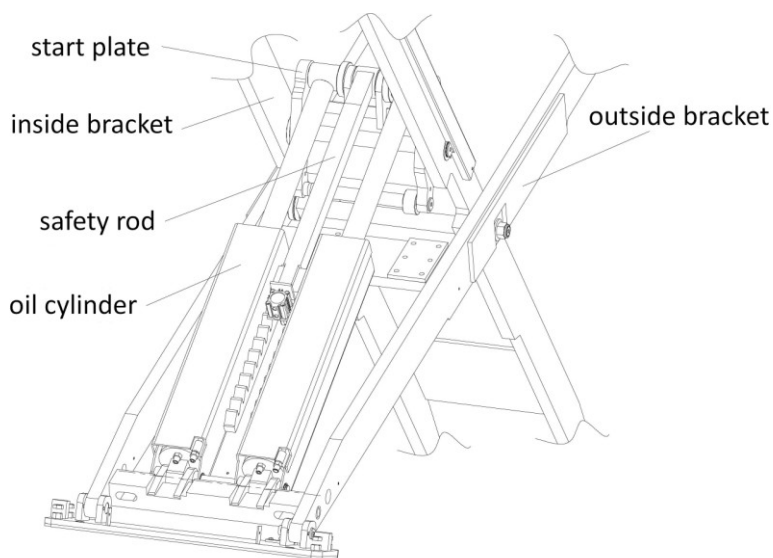


Type B, platform with flexible turntable positions, sideslip and central jack



Type S, smooth platform

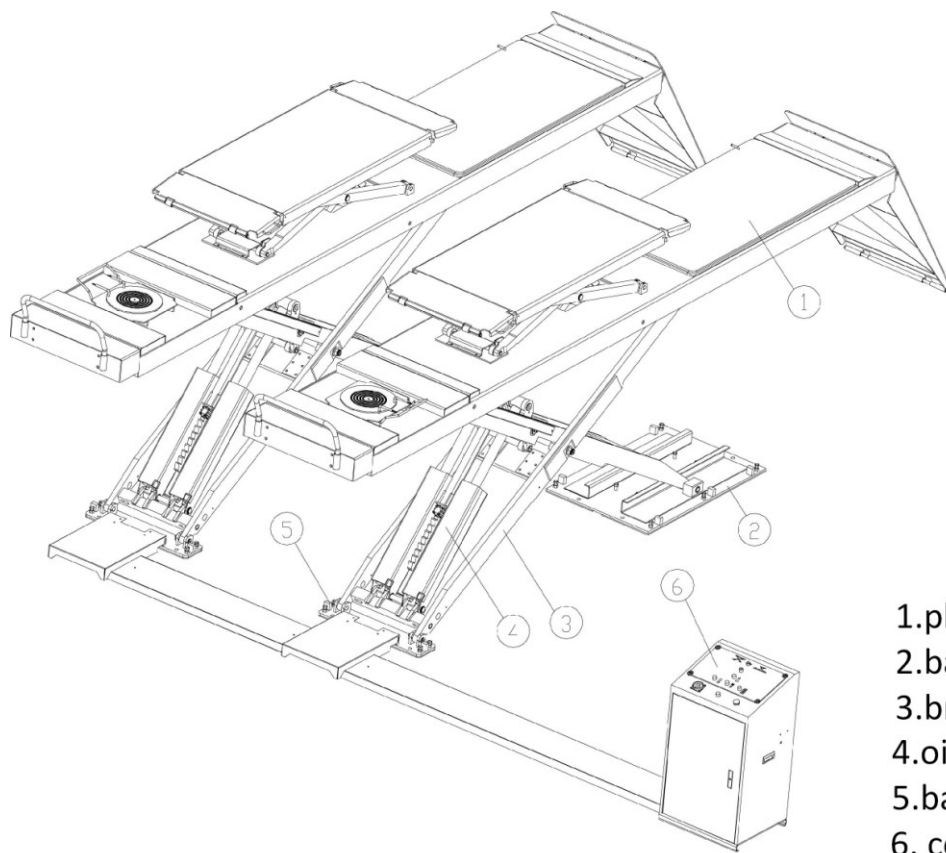
2.2 Safety structure



2.3 Technical data

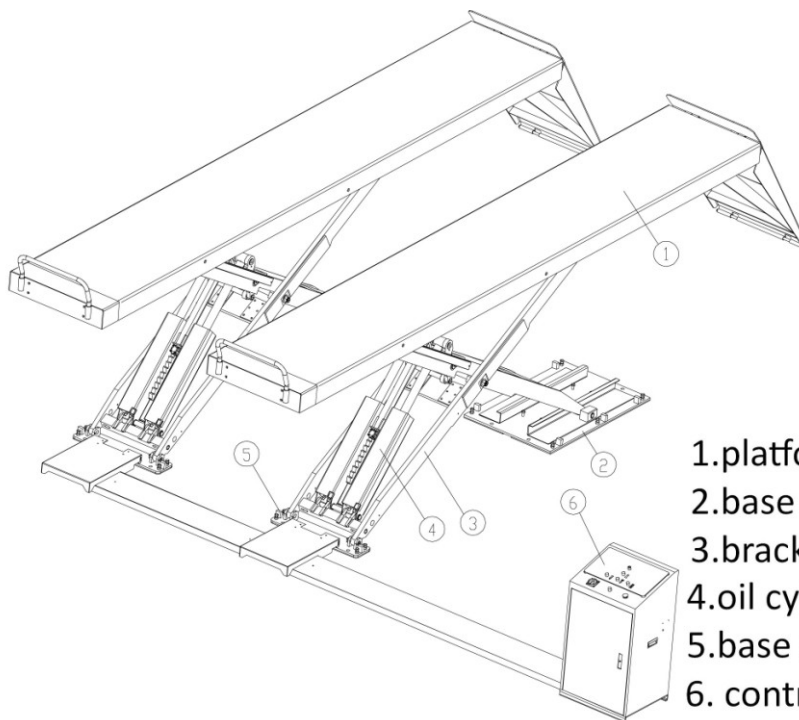
Model	Lifting capacity	Lifting time	Min height	Lifting height	Electrical requirement
EE-6604	4000KG	45S	180mm	1800mm	380V/415V, Three Phase

2.4 Construction of the lift
Type B



- 1.platform
- 2.base B
- 3.bracket
- 4.oil cylinder
- 5.base A
- 6. control cabinet

Type S



- 1.platform
- 2.base B
- 3.bracket
- 4.oil cylinder
- 5.base A
- 6. control cabinet

INSTALLATION INSTRUCTIONS

3.1 Preparations before installation

3.1.1 Tools and equipments needed

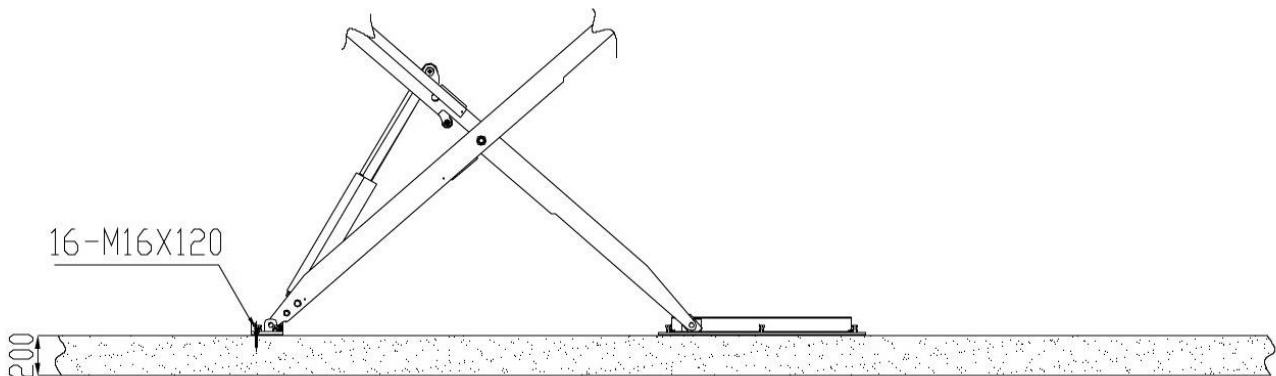
- √ Electrical drill √ Open wrenches
- √ Screw drivers √ Adjustable spanner

3.1.2 List for parts checking ---Annex 1 (Packing list)

Unfold the package and check if any parts missed as per Annex 1. Do not hesitate to contact us in case any parts missed, but if you do not contact us and insist installing upon the lack of some parts, we as well as our dealers will not bear any responsibility for this and will charge for any parts subsequently demanded by the buyer.

3.1.3 Ground conditions

The lift should be fixed on a smooth and solid concrete ground with its strength more than 3000psi, tolerance of flatness less than 5mm and minimum thickness of 200mm. In addition, newly built concrete ground must undergo more than 28days' cure and reinforcement.



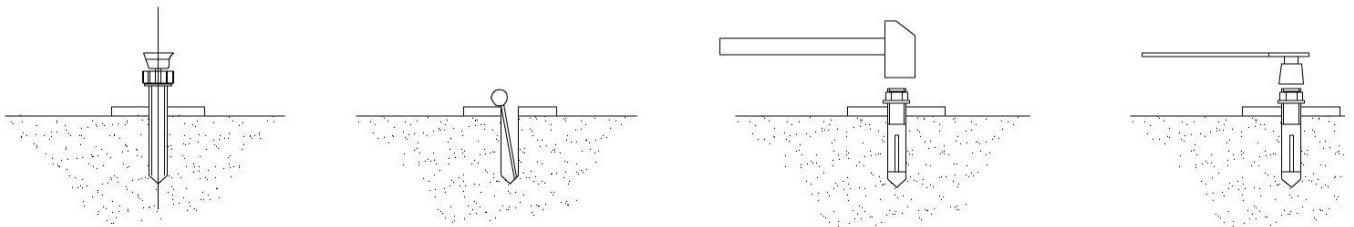
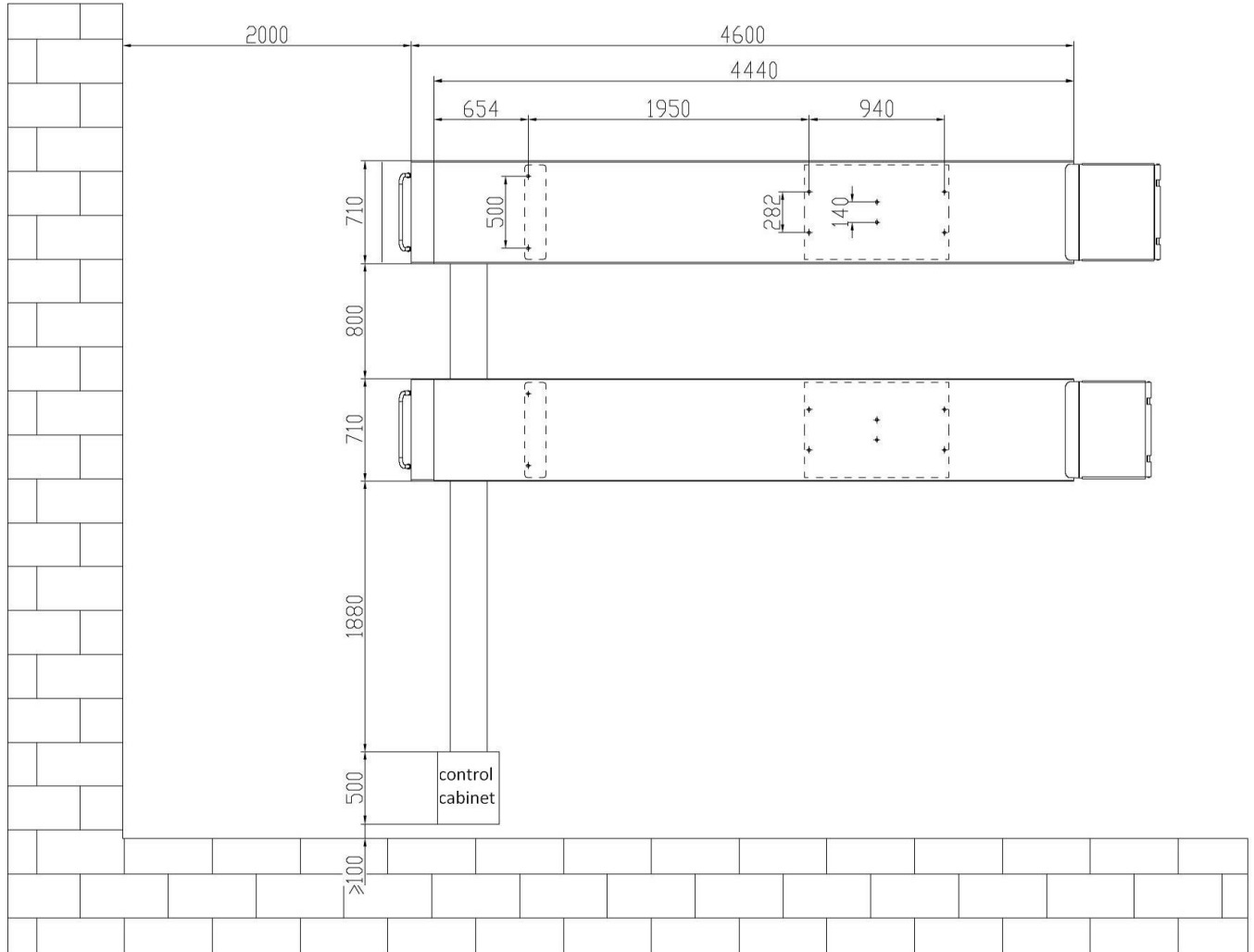
3.2 Precautions for installation

- 3.2.1 Joints of oil hose and wiring must be firmly connected in order to avoid leakage of oil hose and looseness of electrical wires.
- 3.2.2 All bolts should be firmly screwed up.
- 3.2.3 Do not place any vehicle on the lift in the case of trial running.

3.3 Installation

Step1: Choose installation site.

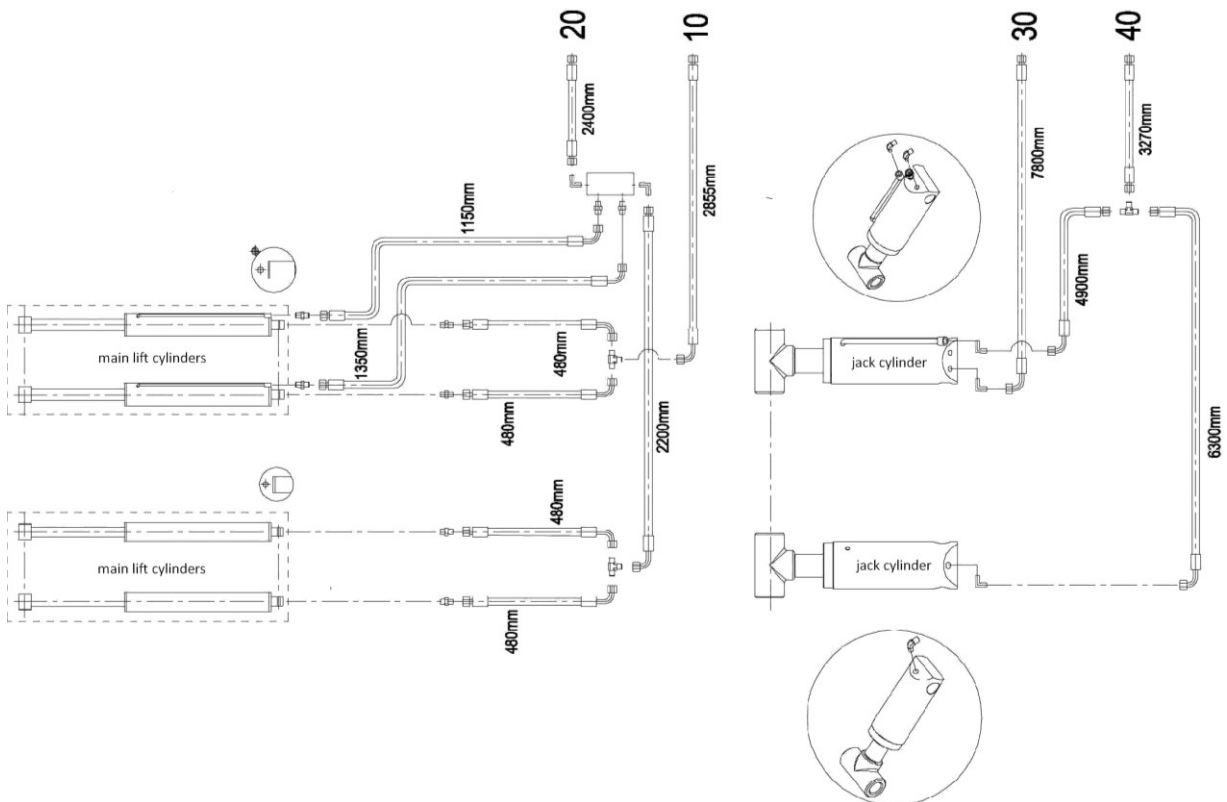
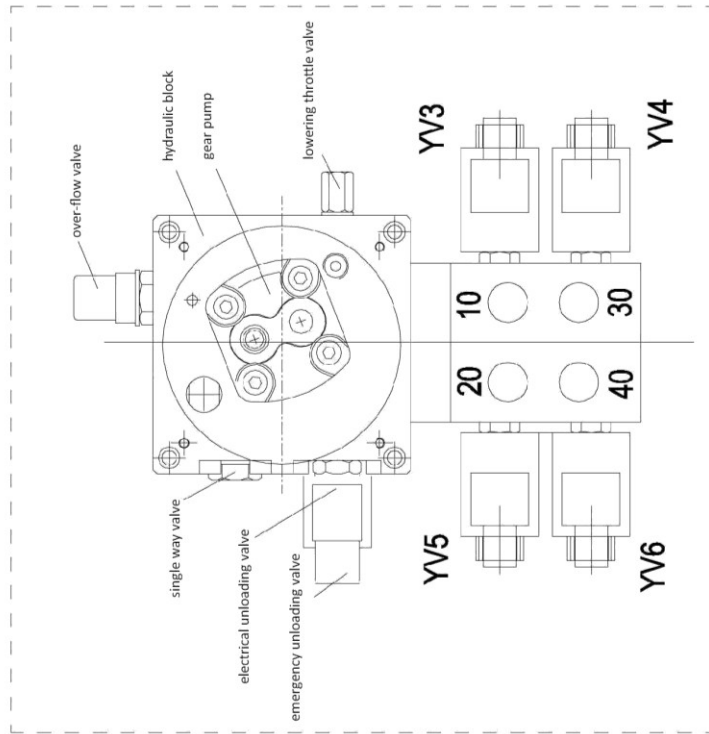
Use a fork lift to place the machine at installation site as required.



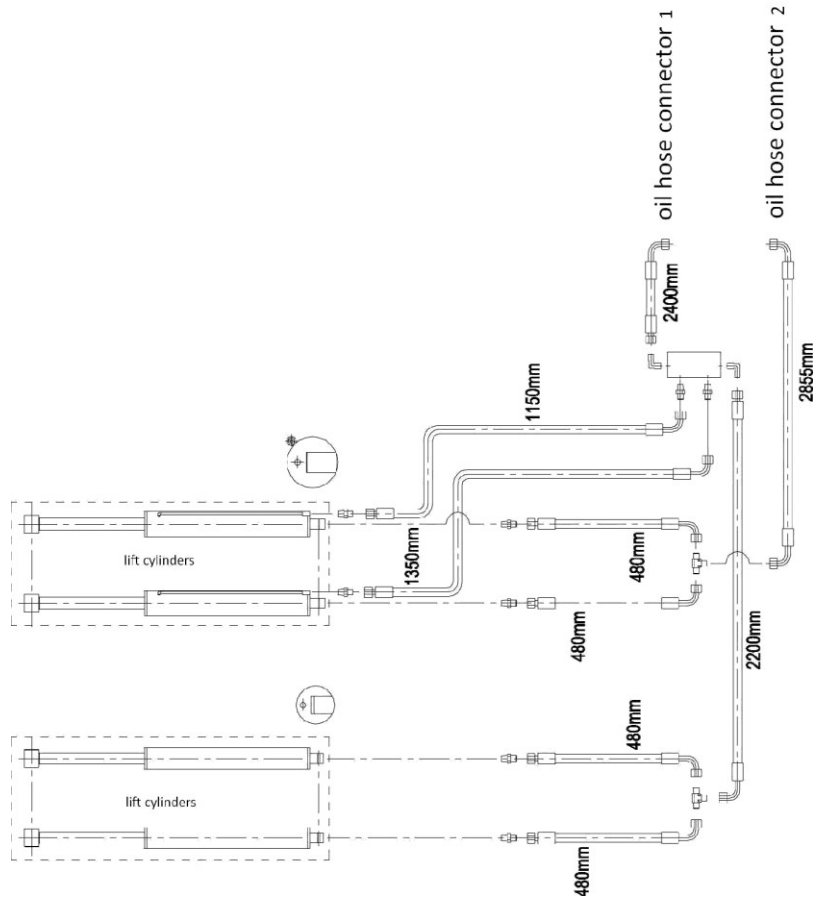
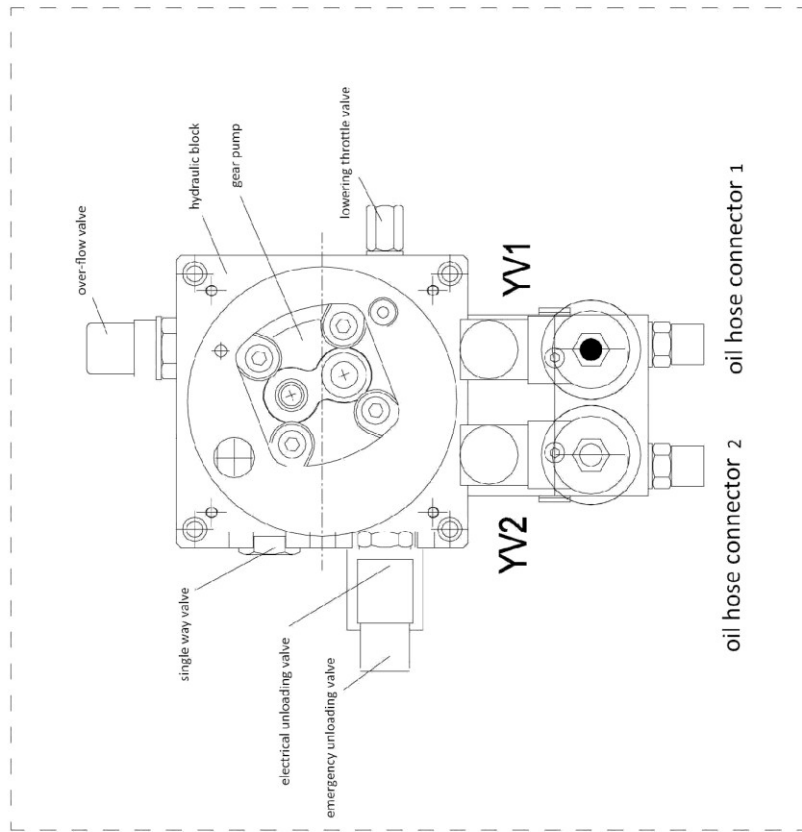
Step 2: Connect oil hoses.

Connect the oil hose as per the diagram for oil hose connection. (This step is very important and it is quite necessary to understand the diagram of oil hose connection before operation)

Oil hose connection diagram for Type B

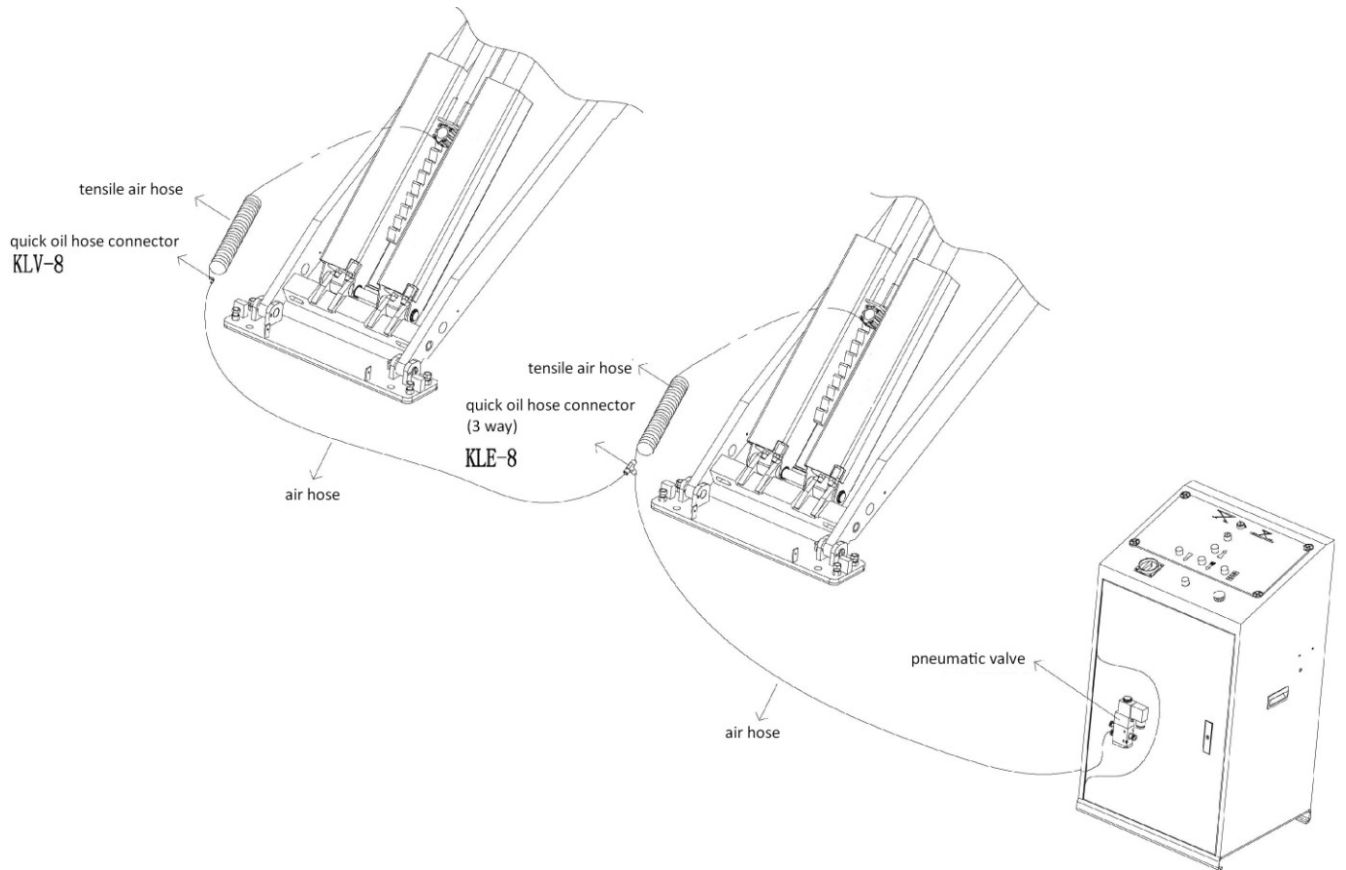


Oil hose connection diagram for Type S



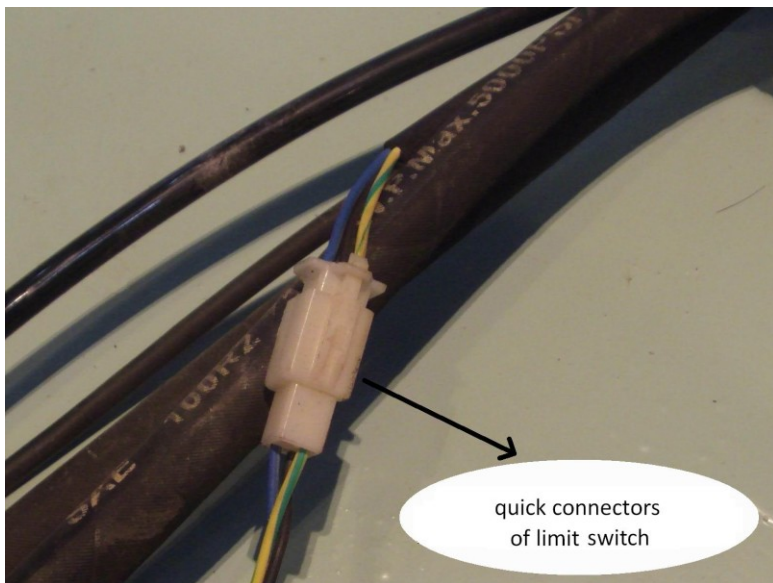
Step 3: Connect air hoses.

Connect the pneumatic release system.



Step 4: Connect wires.

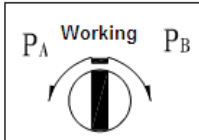
Connect the power supply and the quick connections of limit switch.



Step 5: Fill with hydraulic oil.

Pour 16 liters of anti-abrasion hydraulic oil into the oil tank. The level of oil shall be 10mm to 40mm distance from the top of the tank. (You may measure by the feeler attached on the cap of the tank)

Note: As running speed of the lift is mainly decided by the density hydraulic oil, we suggest using NO.46 hydraulic oil when average temperature of the location is above 18 degree Celsius and using NO.32 hydraulic oil when temperature is below 18 degree Celsius.

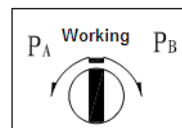
Step 6: Leveling
Electrical leveling of platforms of body lift


Option switch
in the control unit

- 1) Connect the power supply and switch on the power button on the control panel until the green indicator light shines.
- 2) Shift the option switch in the control unit to working condition and press the "UP" button for 30 seconds. Normally at least one of the platforms will rise at this movement. **(In the case the machine is equipped with three phase power supply and the motor works but the platform does not move upwards after the "UP" button has been pressed for 30 seconds, the operators needs to change the phase order of the motor's wiring)**
- 3) Turn the option switch to PA and press "UP" or "DOWN" button to adjust the height of Platform A until it reach the same height as that of Platform B.

Or you can turn the option switch to PB and press "UP" or "DOWN" button to adjust the height of Platform B until it reach the same height as that Platform A.

If synchronization is still not achieved, repeat the above leveling steps until synchronization reached.

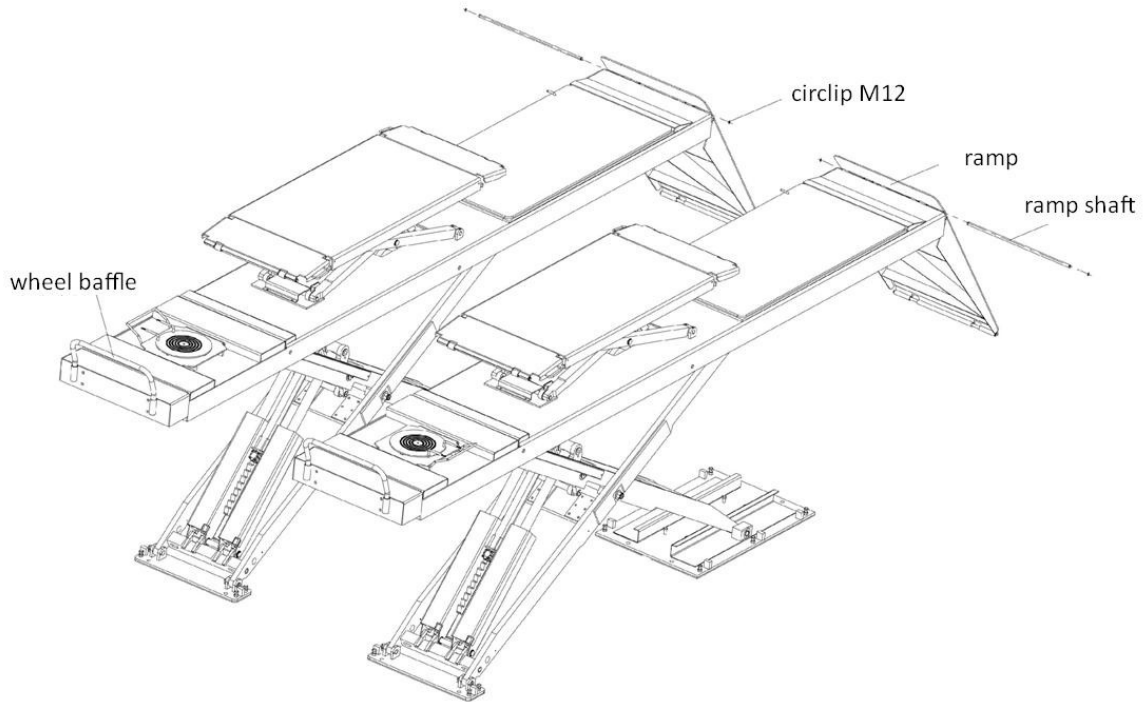
Electrical leveling of jacking beams


Option switch
in the control unit

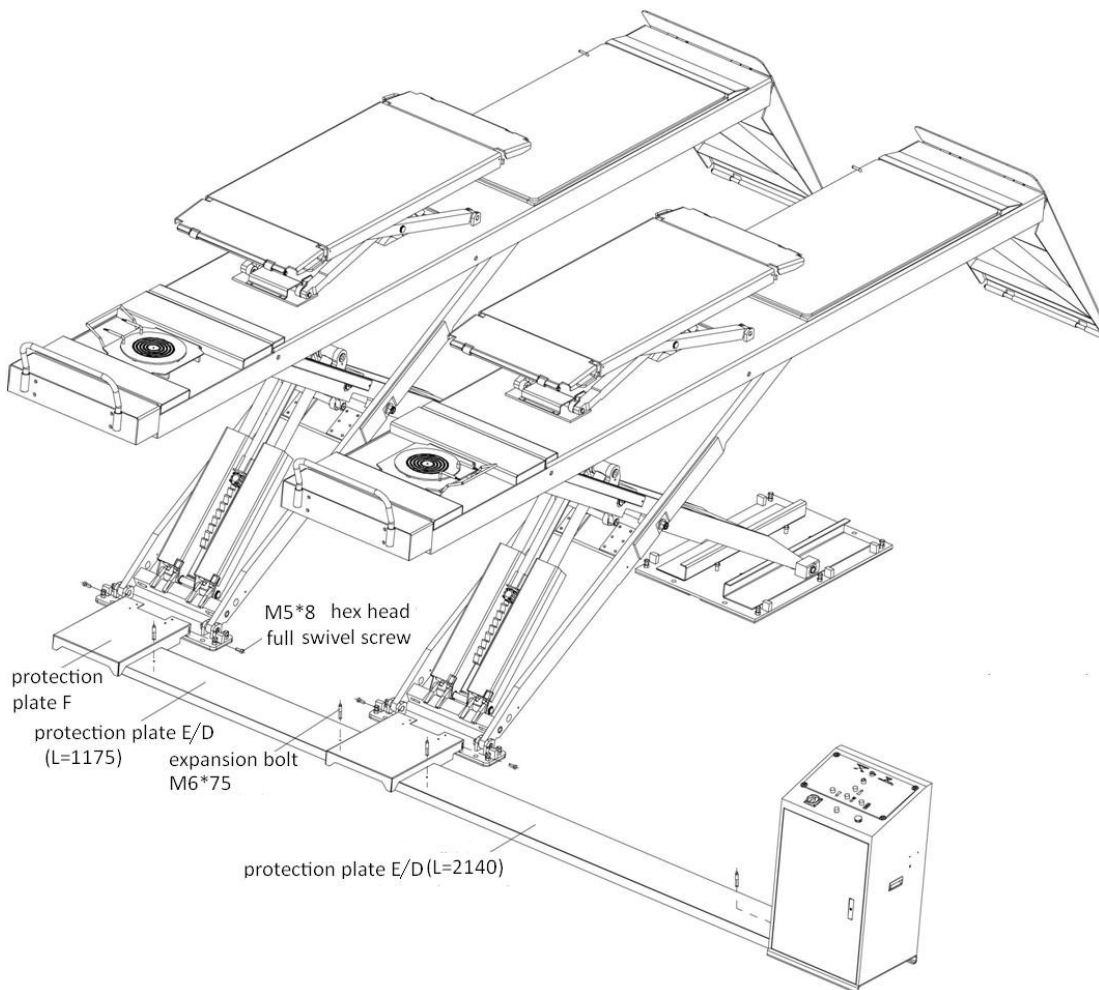
- 1) Turn the option switch on the control panel to "jack".
- 2) Turn the option switch in the control unit to leveling condition (PA or PB) and now you can press "UP" or "DOWN" button to adjust the height of one of the two platform the assistant platform until they reach the same height.

Switch the option switch to working condition and press the "UP" and "DOWN" button to check the synchronization of the two platforms.

Step 7: Install ramps and wheel baffle



Step 8: Install oil hose protectors



3.4 Items to be checked after installation.

S/N	Check items	YES	NO
1	Are two platforms adjusted with the same level?		
2	Are oil hose tightly connected?		
3	Are all electric connections correct?		
4	Are valves of the pump unit oil tight?		

OPERATION INSTRUCTIONS

4.1 Precautions

4.1.1 Check all the joints of oil hose. Only when there is no leakage, the lift can start work.

4.1.2 The lift, if its safety device malfunctions, shall not be used.

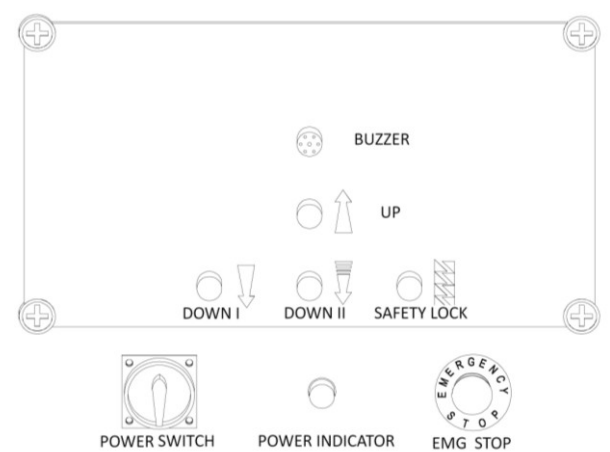
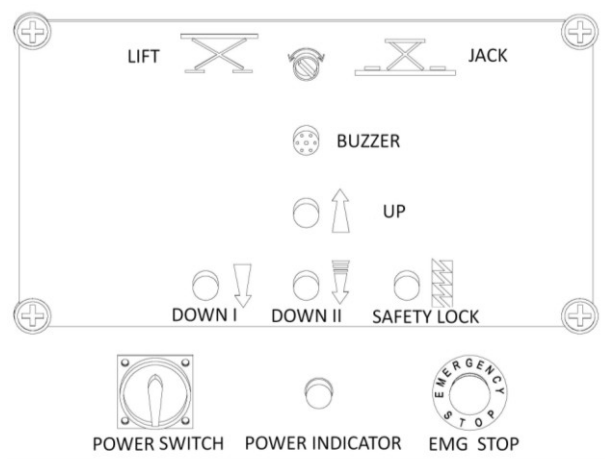
4.1.3 It shall not lift or lower an automobile if its center of gravity is not positioned midway of the runways. Otherwise, we as well as our dealers will not bear any responsibility for any consequence resulted thereby.

4.1.4 Operators and other personnel concerned should stand in a safety area during lifting and lowering process.

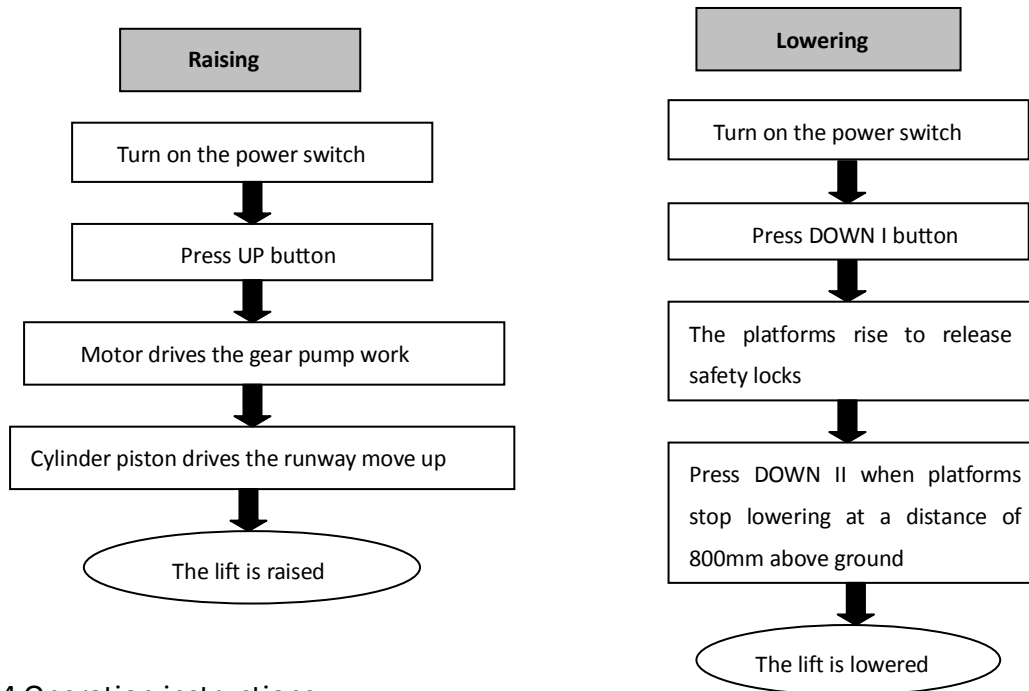
4.1.5 When runways being raised to the desired height, switch off the power at once to prevent any wrong operation done by unconcerned people.

4.1.6. Make sure the safety lock of the lift is engaged before start working under the vehicle and no people under the vehicle during lifting and lowering process.

4.2 Descriptions of control panel



4.3 Flow chart for operation



4.4 Operation instructions

Raise the lift

1. Make sure that you have read and understood the operation manual before operation.
2. Drive and park the vehicle midway between two runways.
3. Press the "UP" button to lift the vehicle a bit higher from the ground and check again if the vehicle is in a safe position.
4. Having raised the vehicle to the required height, operators must press down the "Safety Lock" button to ensure the mechanical safety lock is engaged. Press the "Emergency Stop" and check again the stability before performing maintenance or repair work.

Lower the lift

1. Switch on.
2. Press the "DOWN I" button to lower the lift. It will stop lowering when clearance between the platforms and the ground reached to 500mm.
3. Press "DOWN II" button to continue lowering the platforms. Alarming buzz will be heard unless you stop pressing "DOWN II".
4. Drive the vehicle away.

TROUBLE SHOOTING

ATTENTION: If the trouble could not be fixed by yourself, please do not hesitate to contact us for help. We will offer our service at the earliest time we can. By the way, your troubles will be judged and solved much faster if you could provide us more details or pictures of the trouble.

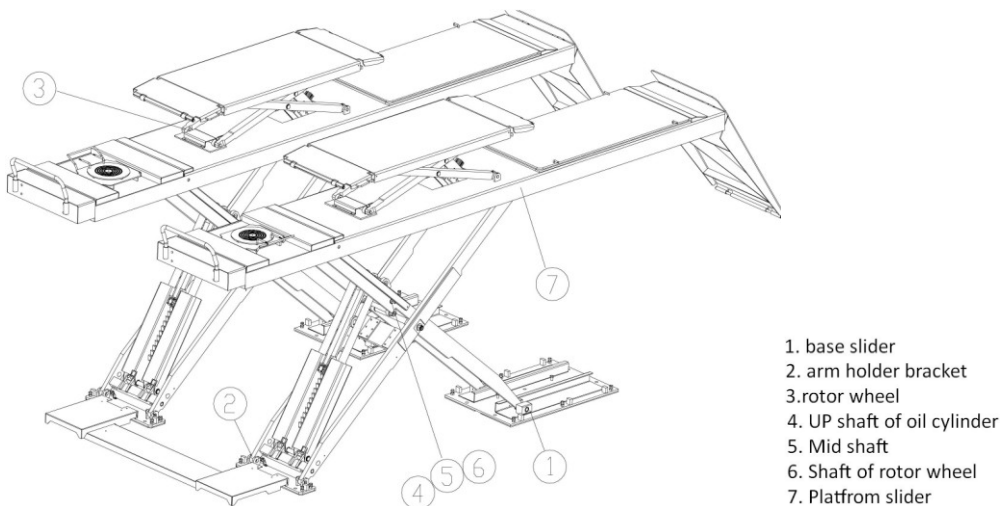
TROUBLES	CAUSE	SOLUTION
Motor does not run and will not raise	The wire connection is loose.	Check and make a good connection.
	The motor is burnt	Replace it.
	The limit switch is damaged or the wire connection is loose.	Connect it or adjust or replace the limit switch.
Motor runs but will not raise	The motor run reversely.	Check the wire connection.
	Overflow valve is loose or jammed.	Clean or adjust it.
	The gear pump is damaged.	Replace it.
	Oil level is too low.	Add oil.
	The oil hose became loose or dropped off.	Tighten it.
	The cushion valve became loose or jammed.	Clean or adjusts it.
Platforms go down slowly after being raised	The oil hose leaks.	Check or replace it.
	The oil cylinder is not tightened.	Replace the seal.
	The single valve leaks.	Clean or replace it.
	The overflow valve leaks.	Clean or replace it.
	Electrical unloading valve leaks.	Clean or replace it.
Raising too slow	The oil filter is jammed.	Clean or replace it.
	Oil level is too low.	Add oil.
	The overflow valve is not adjusted to the right position.	Adjust it.
	The hydraulic oil is too hot (above 45°).	Change the oil.
	The seal of the cylinder is abraded.	Replace the seal.
Lowering too slow	The throttle valve jammed.	Clean or replace.
	The hydraulic oil is dirty.	Change the oil.
	The anti-surge valve jammed.	Clean it.
	The oil hose jammed.	Replace it.

MAINTENANCE

It is advised to change the hydraulic oil three month after initial use and once per year thereafter for which could prolong the service life of the pump.

Easy and low cost routine maintenance can ensure the lift work normally and safely. Following are requirements for routine maintenance. You may choose the frequency of routine maintenance by consulting your lift's working conditions and time.

The following parts need to be lubricated.



6.1 Daily checking items before operation

The user must perform daily check. Daily check of safety system is very important – the discovery of device failure before action could save your time and prevent you from great loss, injury or casualty.

- Check whether oil hose well connected. No leakage is allowed.
- Check the electric connections .Make sure all connections are in good condition.
- Check whether the expansion bolts well anchored.
- Check if safety teeth and safety block matched well or not.

6.2 Weekly checking items

- Check the flexibility of moving parts.
- Check the working conditions of safety parts.
- Check the amount of oil left in the oil tank. Oil is enough if the carriage can be raised to highest position. Otherwise, oil is insufficient.
- Check whether the expansion bolts well anchored.

6.3 Monthly checking items

- Check whether the expansion bolts well anchored.
- Check the tightness of the hydraulic system and screw firm the joints if it leaks.
- Check the lubrication and abrasion circumstance of moving parts.

6.4 Yearly checking items

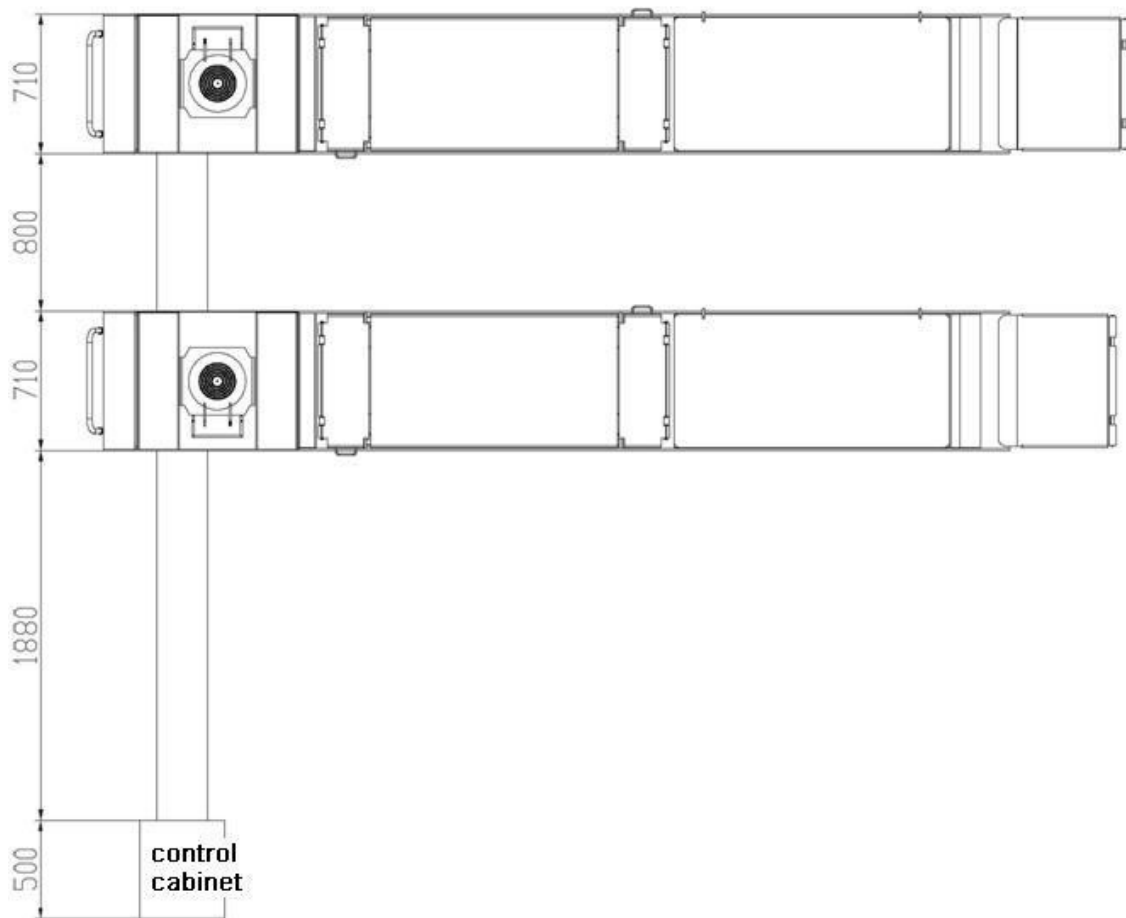
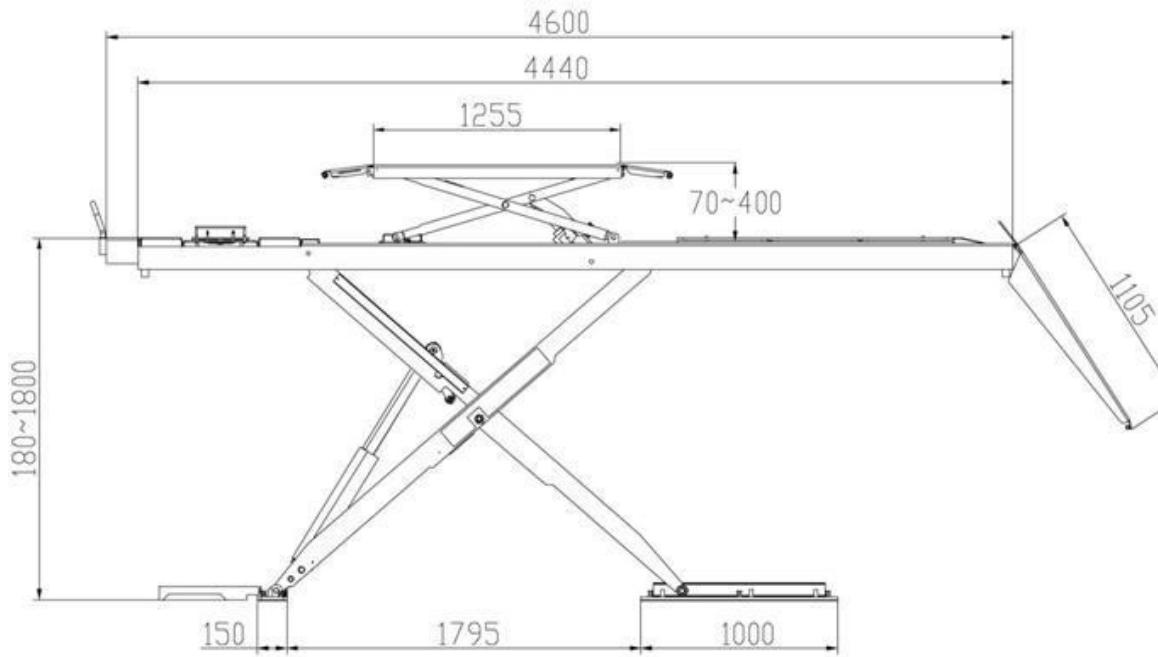
- Empty the oil tank and check the quality of hydraulic oil.
- Wash and clean the oil filter.

If users strictly follow the above maintenance requirements, the lift will keep in a good working condition and meanwhile accidents could be avoided to a large extent.

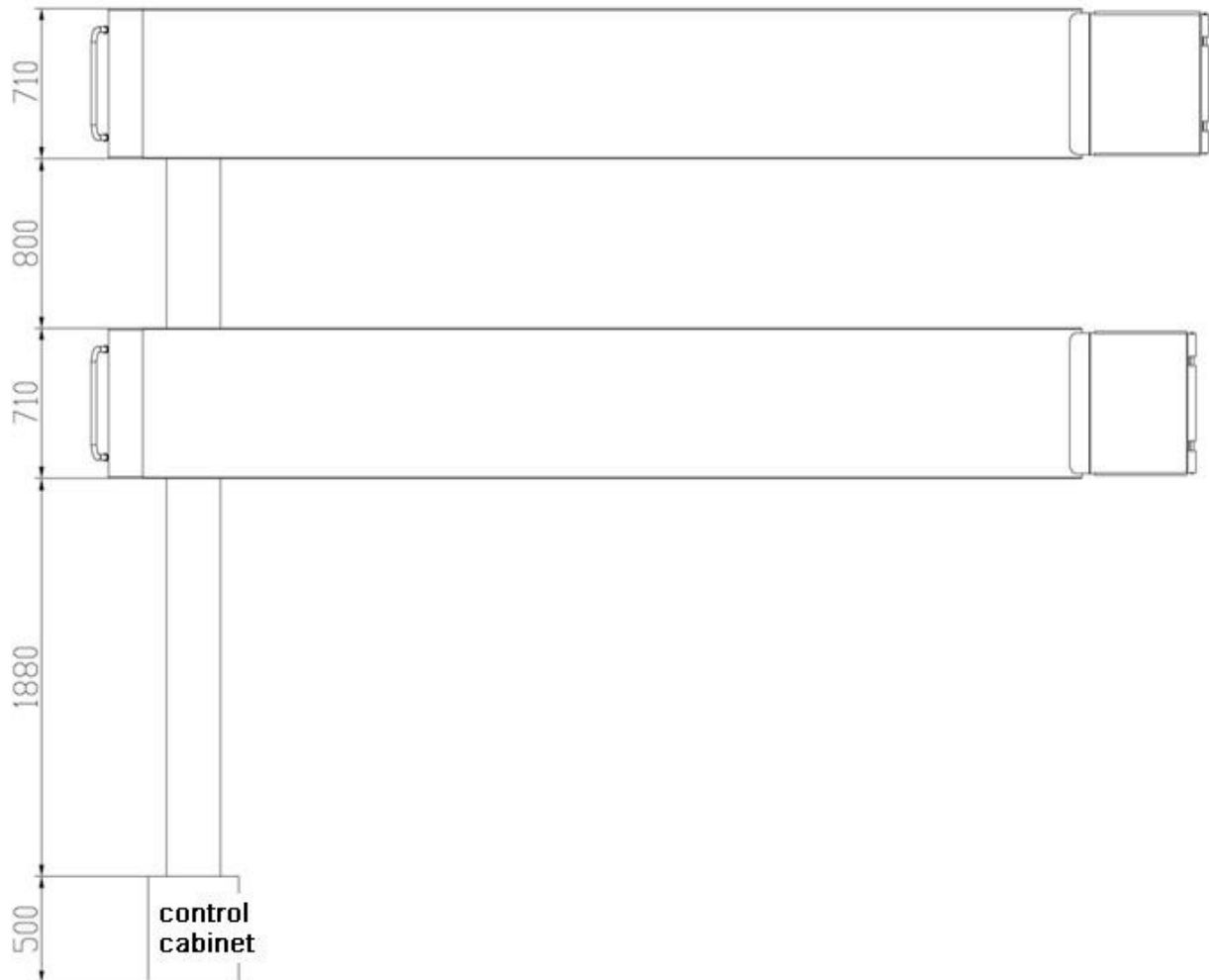
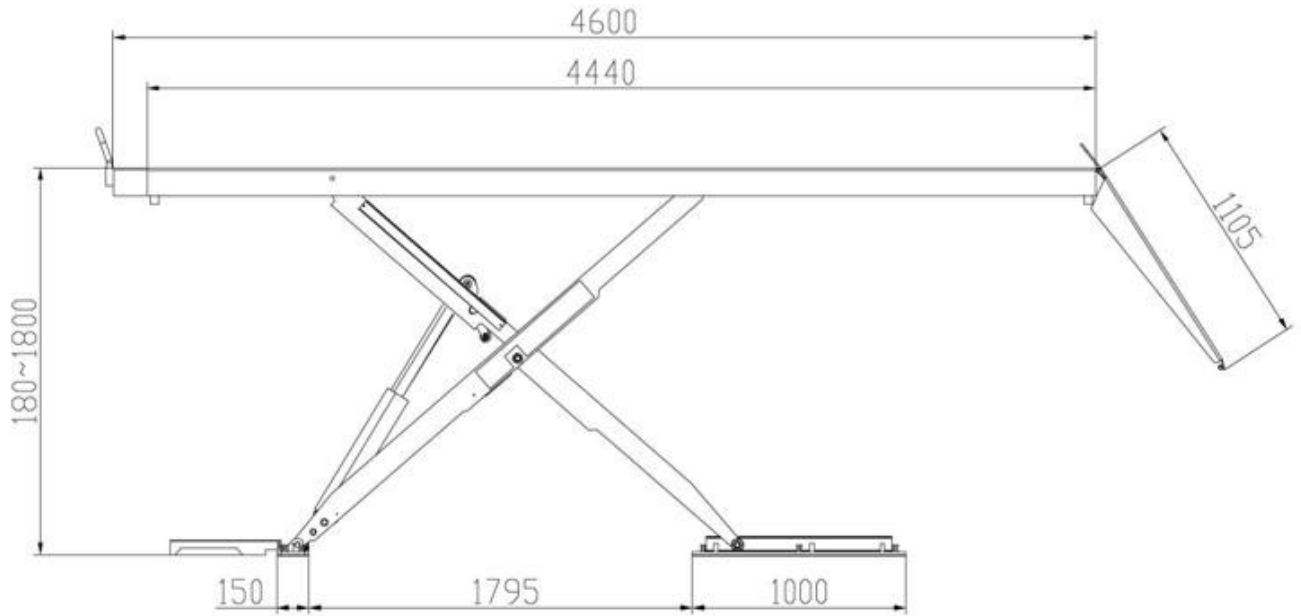
Annex 1, Packing List of the whole lift

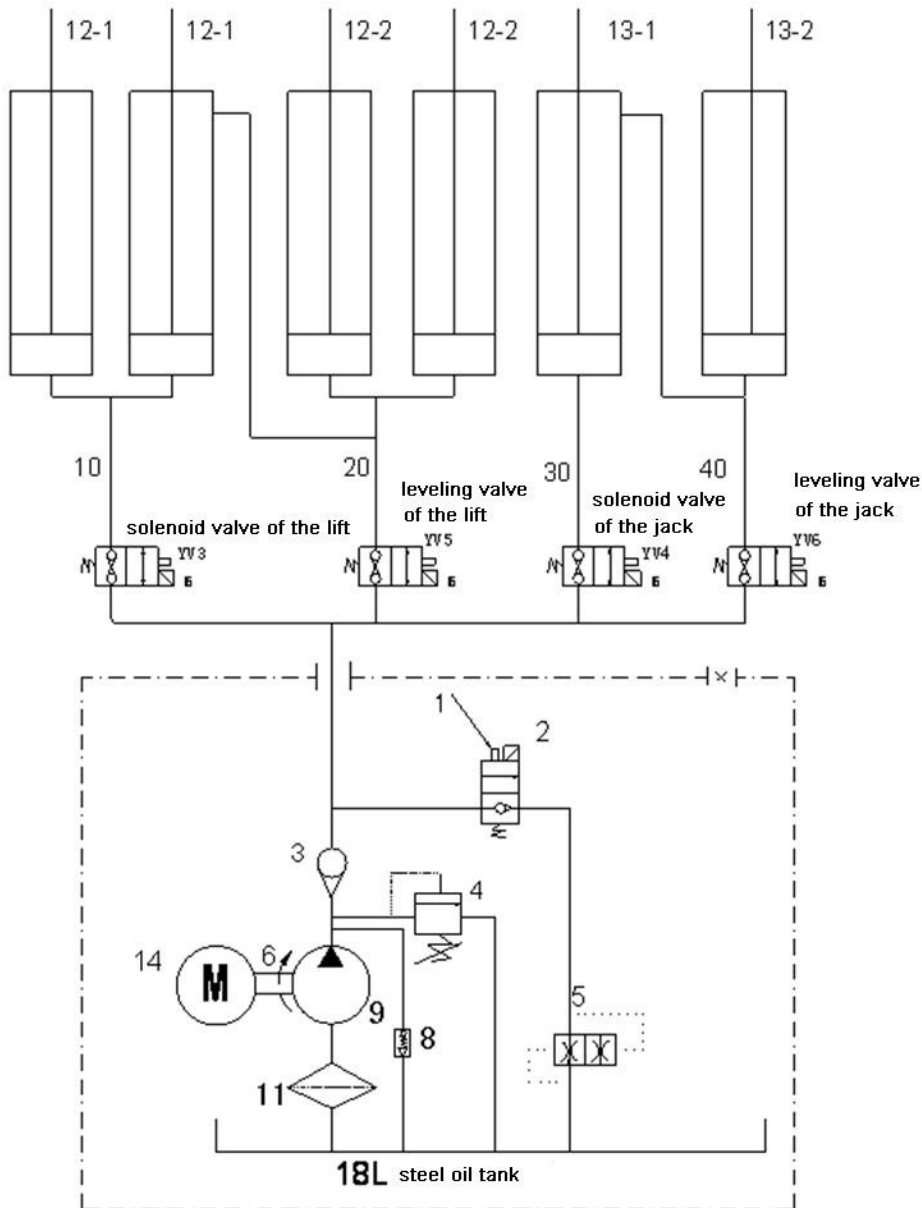
S/N	Name	Spec./DRW#	Qty	Note
1	Scissor lift	/	2	
2	Expansion bolt	M16*120	16	
3	Control cabinet	/	1	
4	Ramp	6604B-A13	2	
5	Oil hose protector D(L=1175)	6604B-A18	1	
6	Oil hose protector D(L=2140)	6604B-A18	1	
7	Oil hose protector E(L=1175)	6604B-A19	1	
8	Oil hose protector E(L=2140)	6604B-A19	1	
9	Oil hose protector F	6604B-A20	2	
10	Expansion bolt	M6*75	4	
11	Wheel baffle	6603B-A4-B2	2	
12	Rubber pad	6501-A14	4	Only for type B

**Annex2, Overall diagram
Type B**



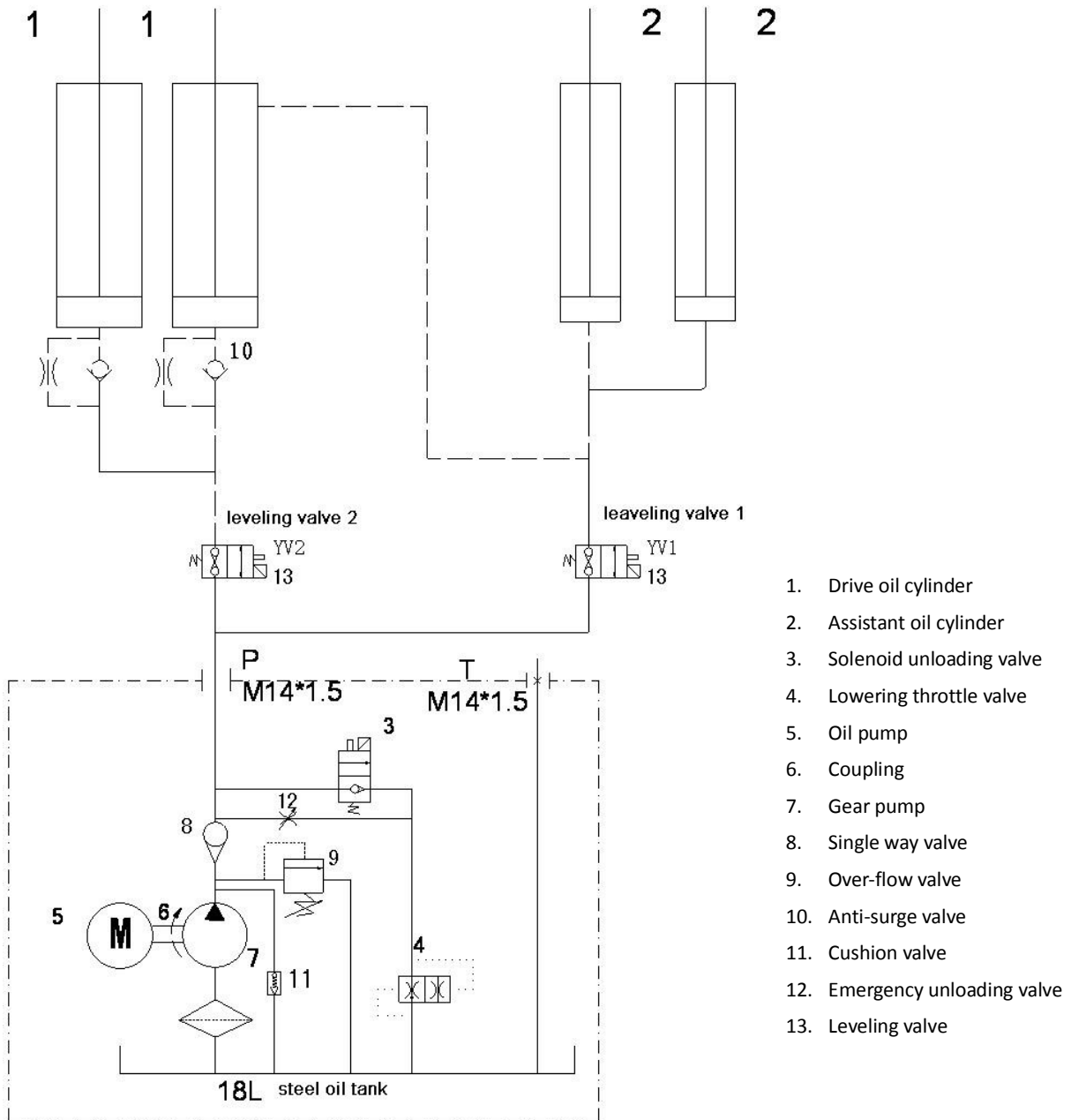
Type S



**Annex 3, Hydraulic working system
 Type B**


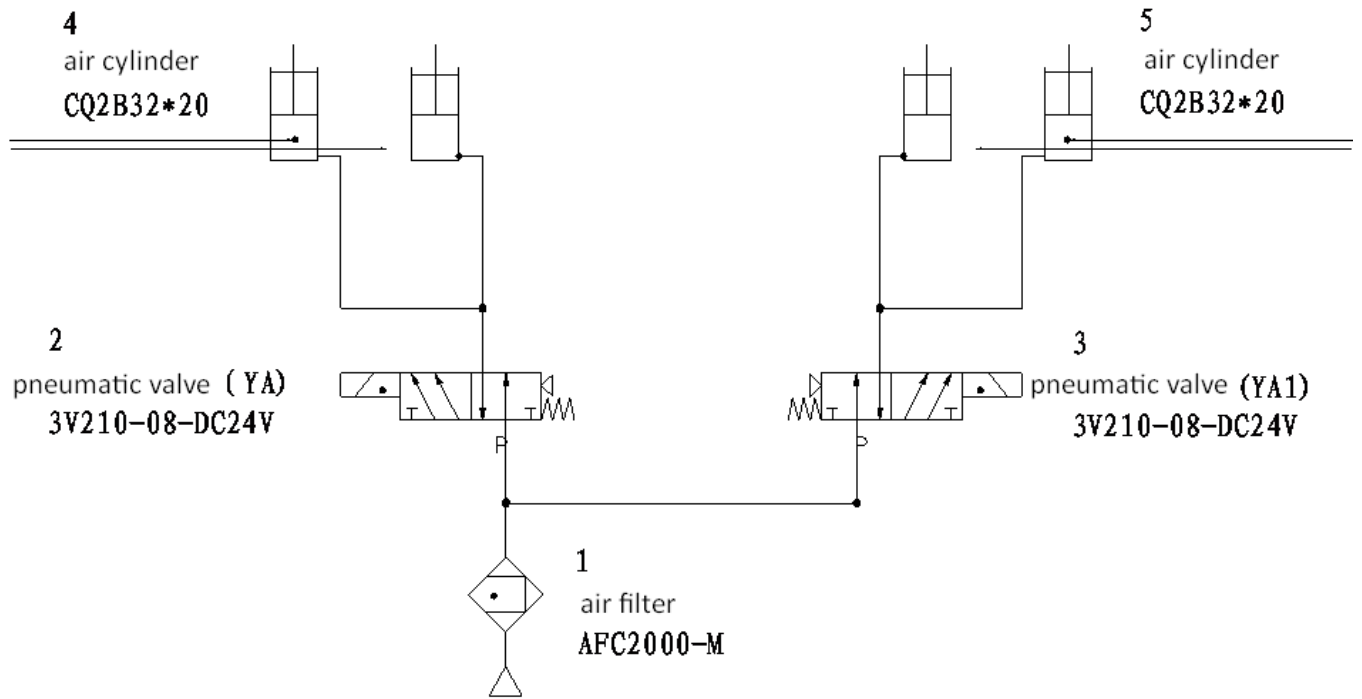
1. Emergency unloading valve
2. Unloading valve
3. Single way valve
4. Over-flow valve
5. Lowering throttle valve
6. Coupling
8. Cushion valve
9. Gear pump
14. Motor
11. Oil filter
12. Drive oil cylinder (12-1、13-1)
13. Assistant oil cylinder (12-2、13-2)

Type S

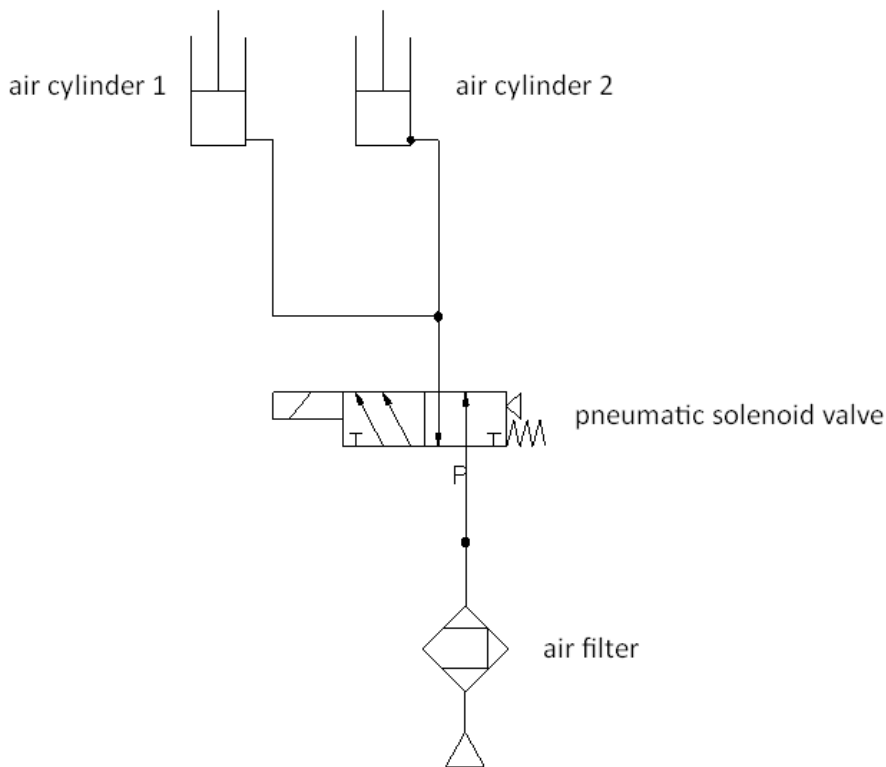


Annex4, Diagram for air supply connection

Type B

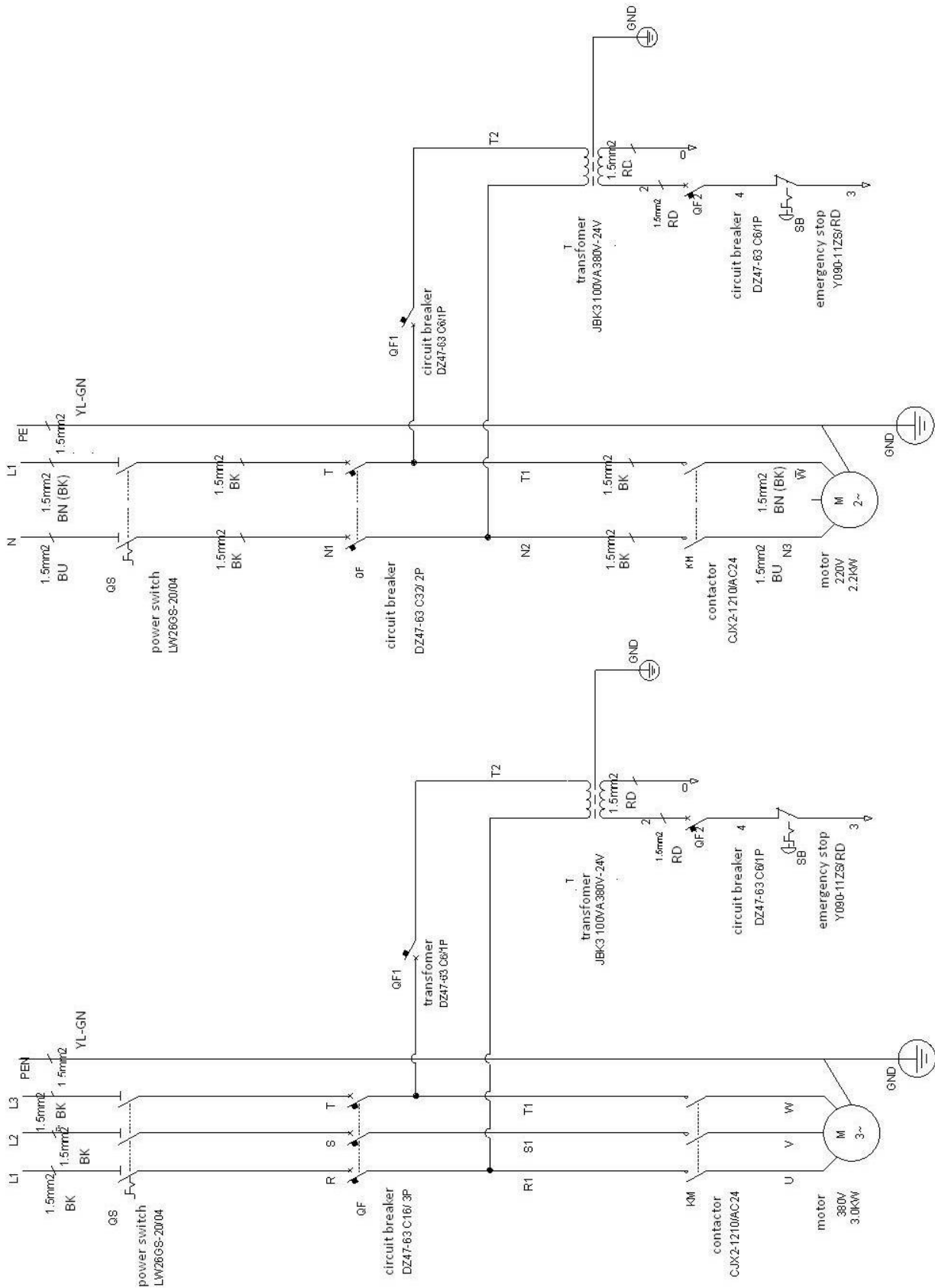


Type S

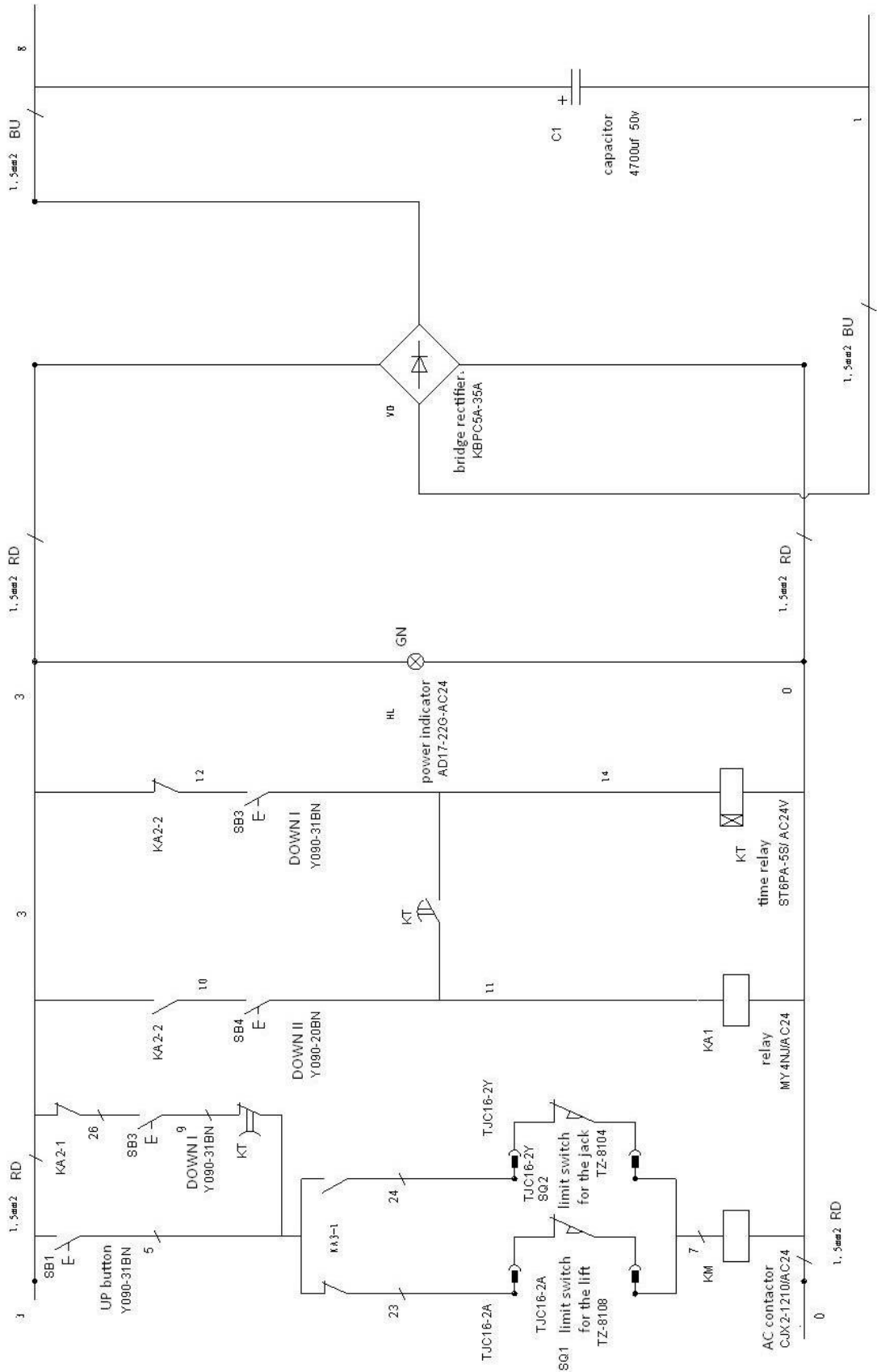


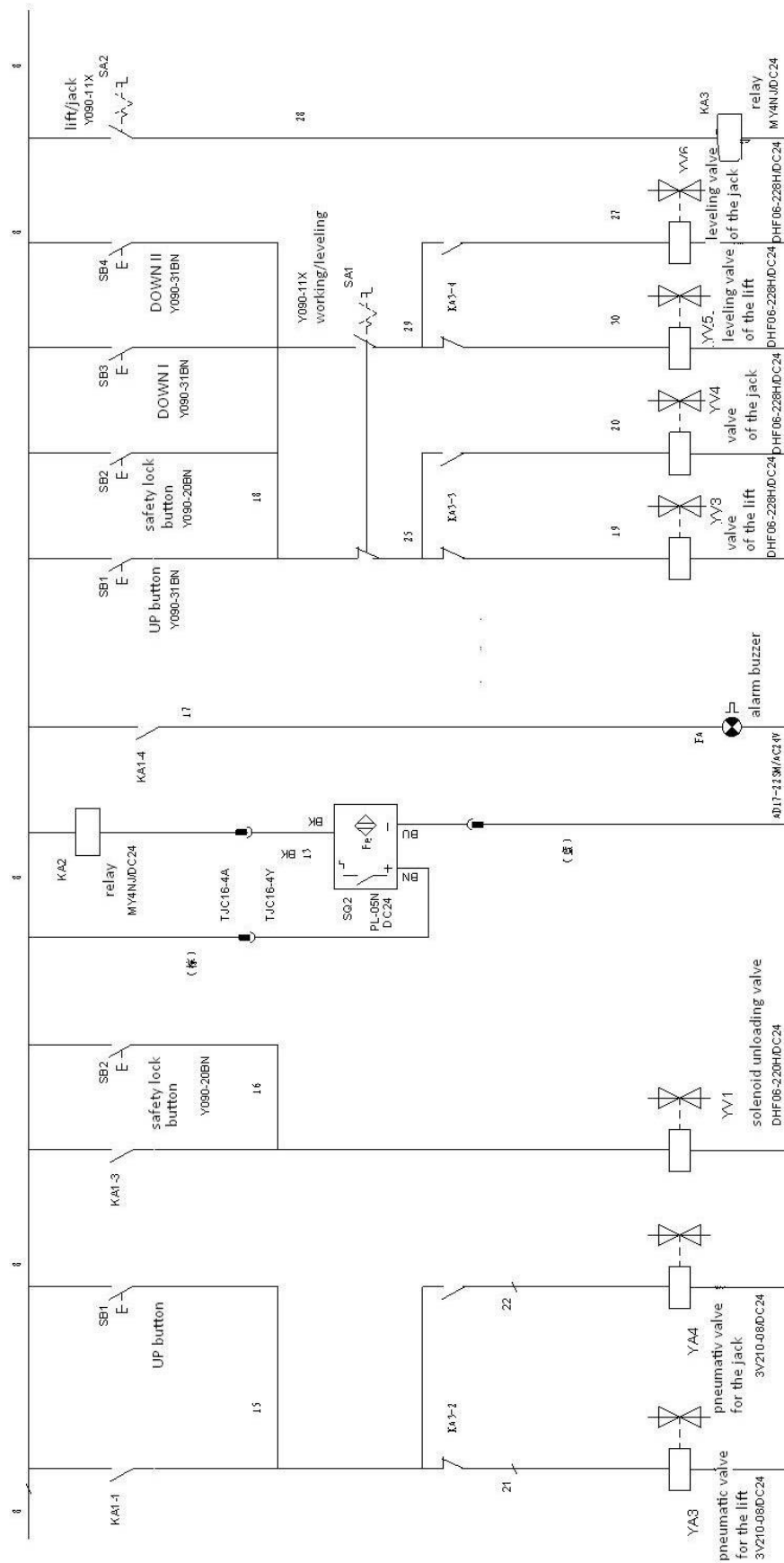
Annex5, Wiring diagram

Wiring diagram for Type B

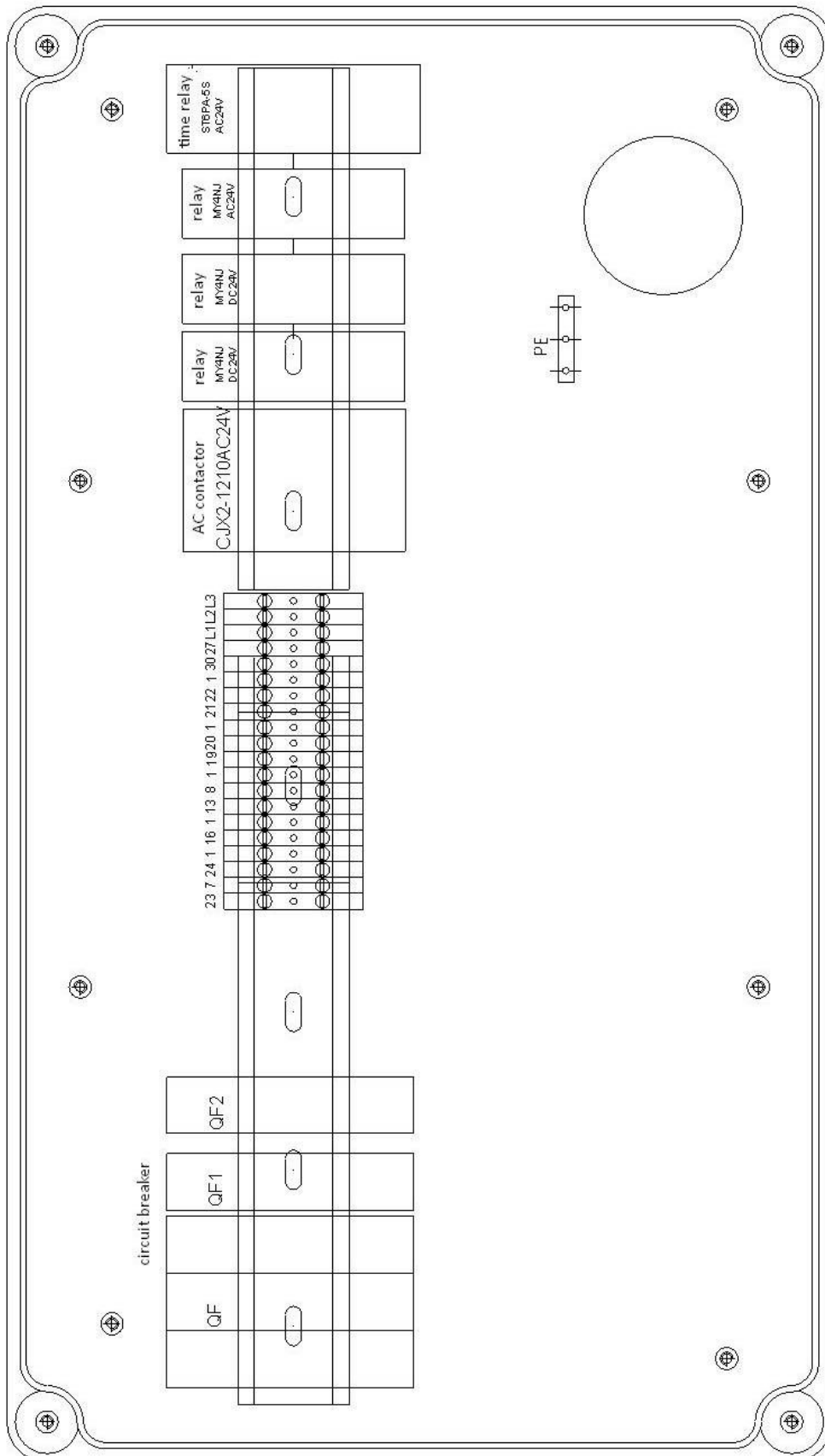


Wiring diagram for Type B

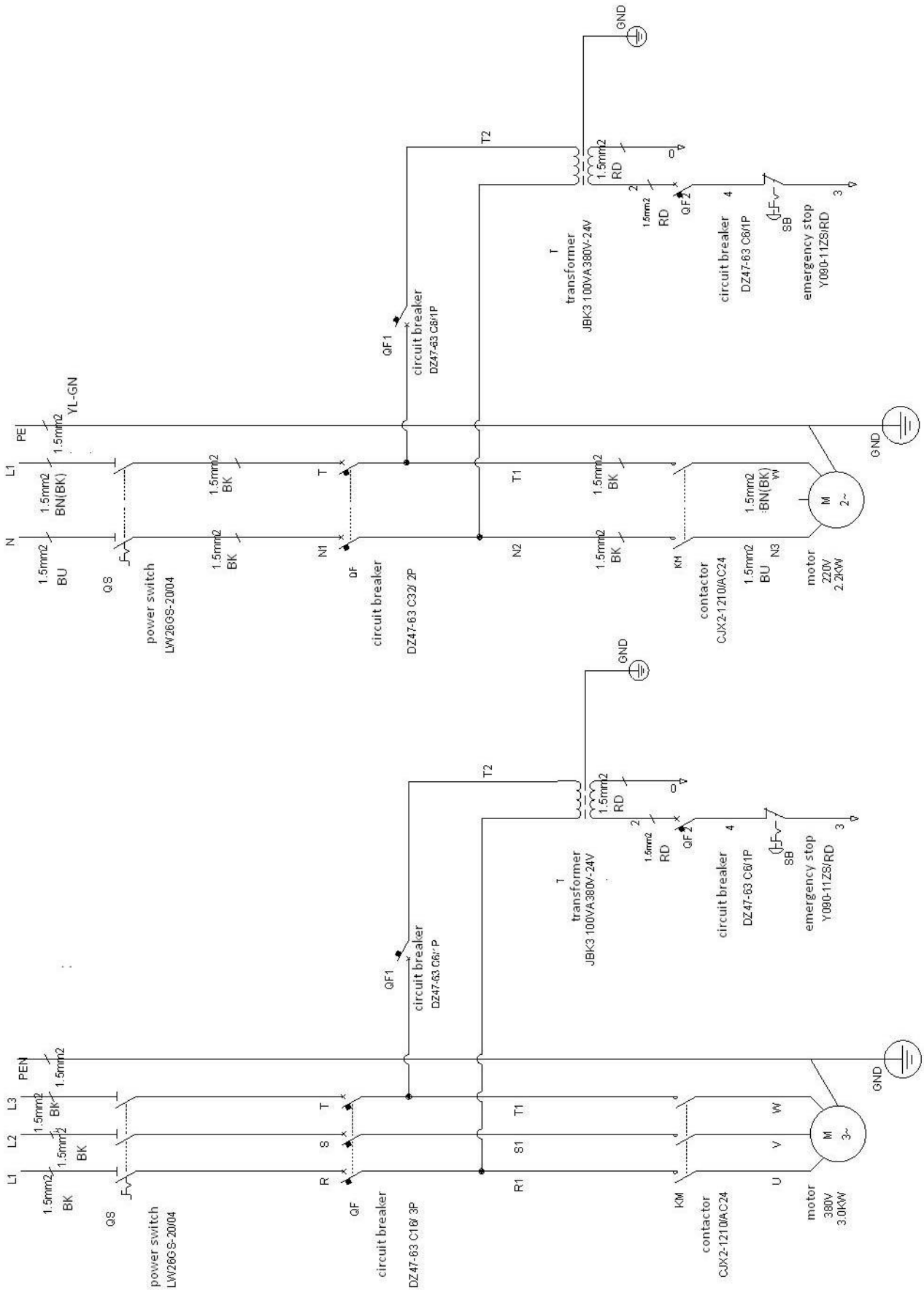


Wiring diagram for Type B


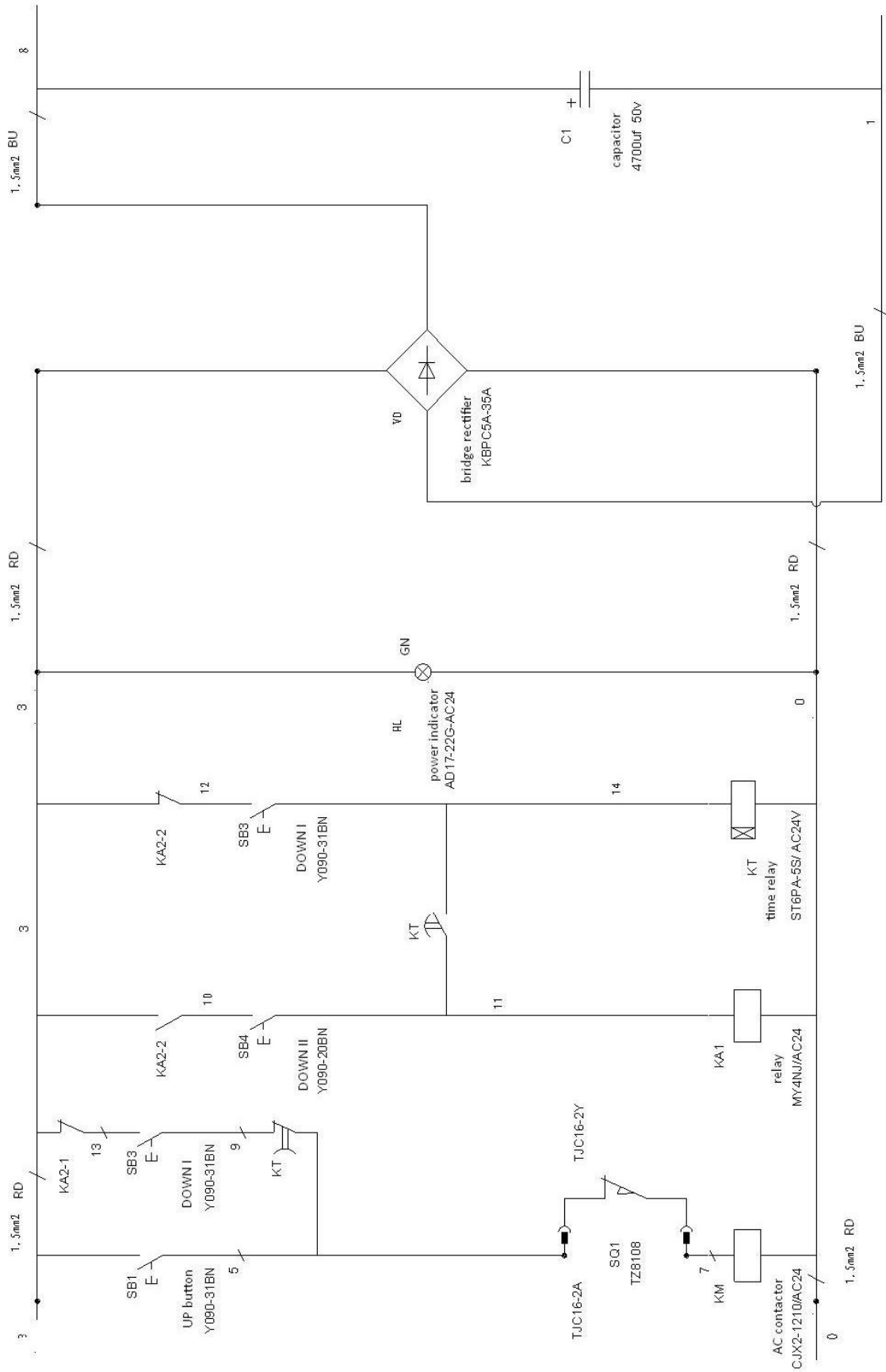
Wiring diagram for Type B

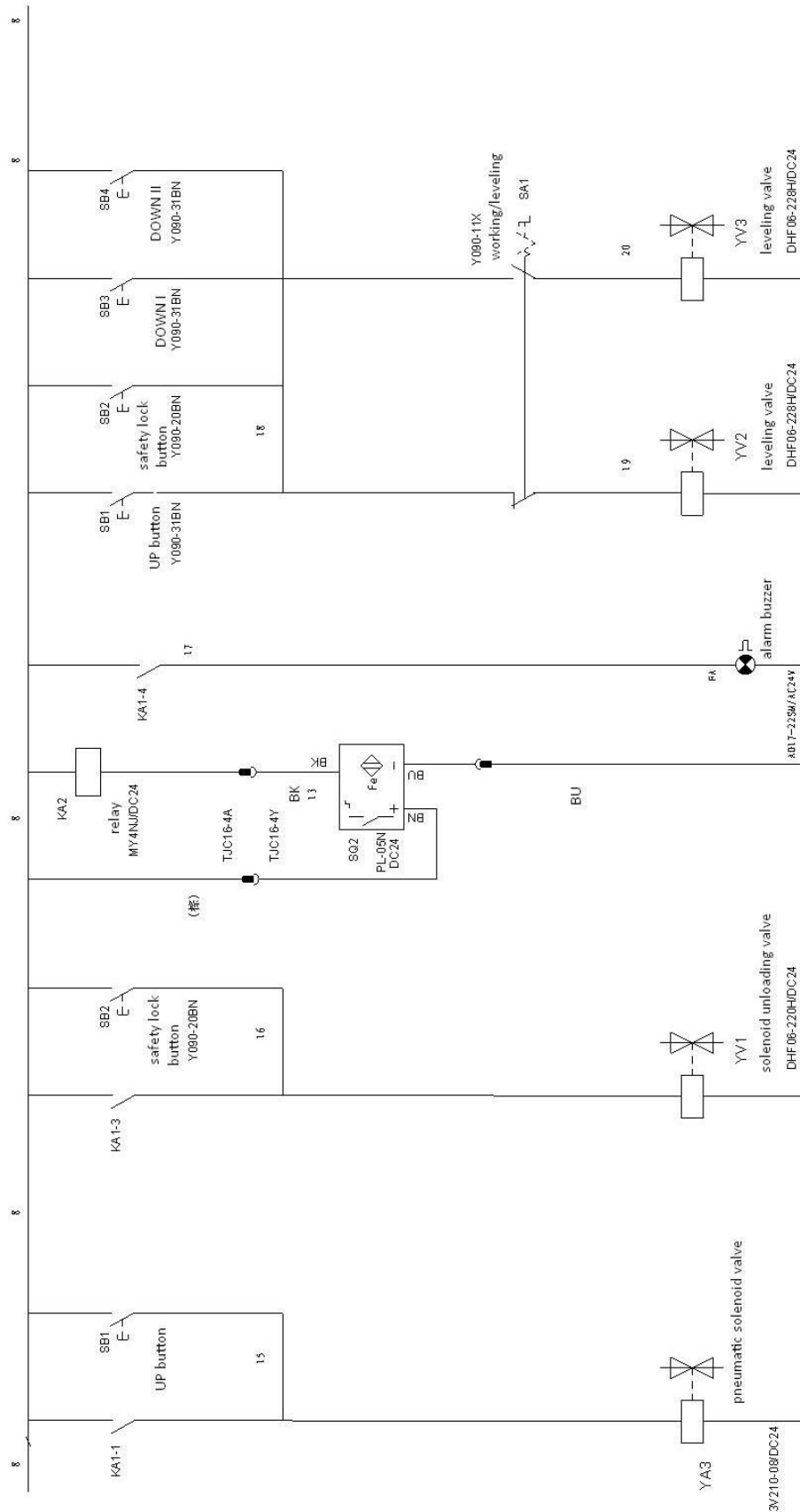


Wiring diagram for Type S

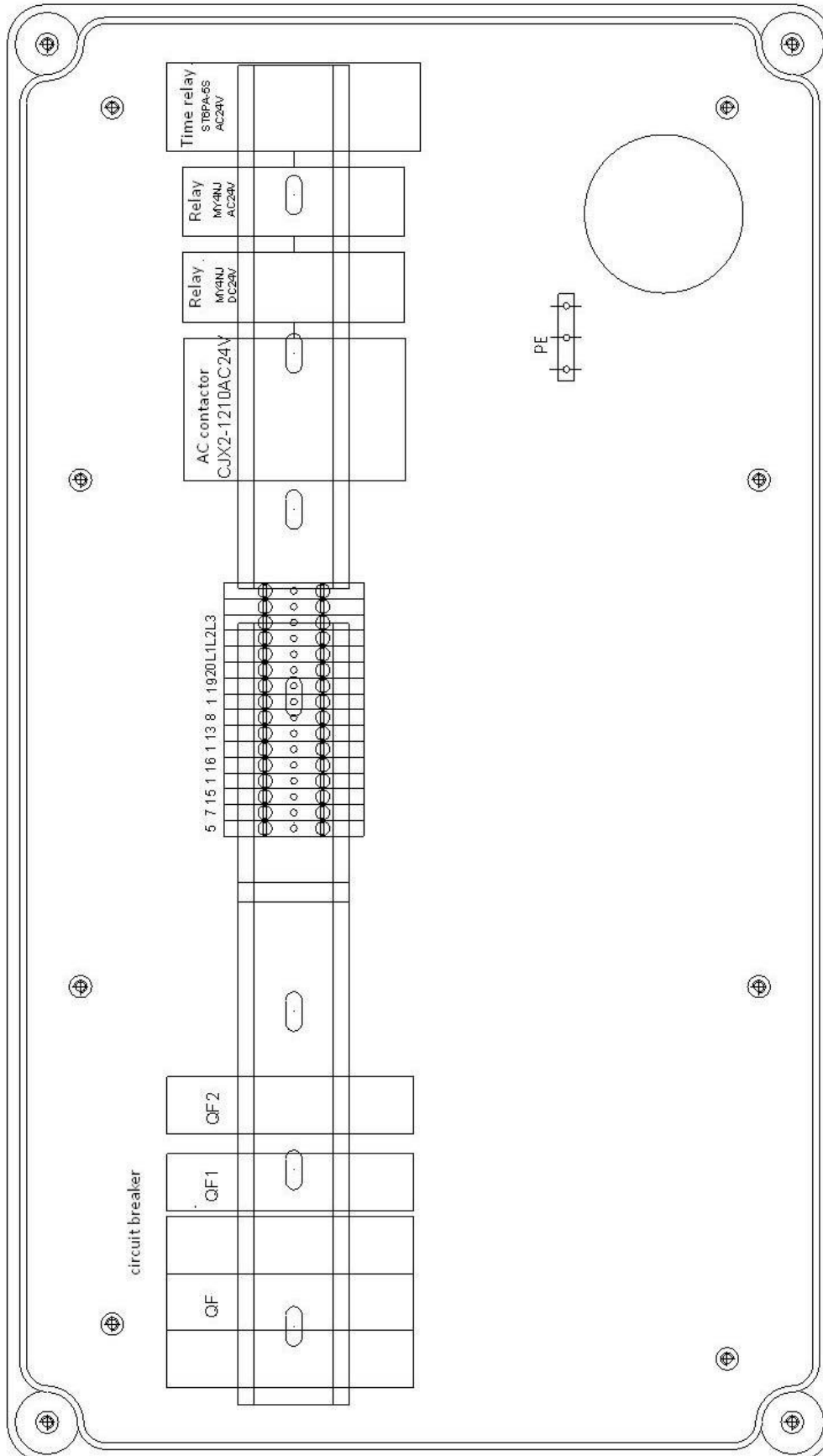


Wiring diagram for Type S

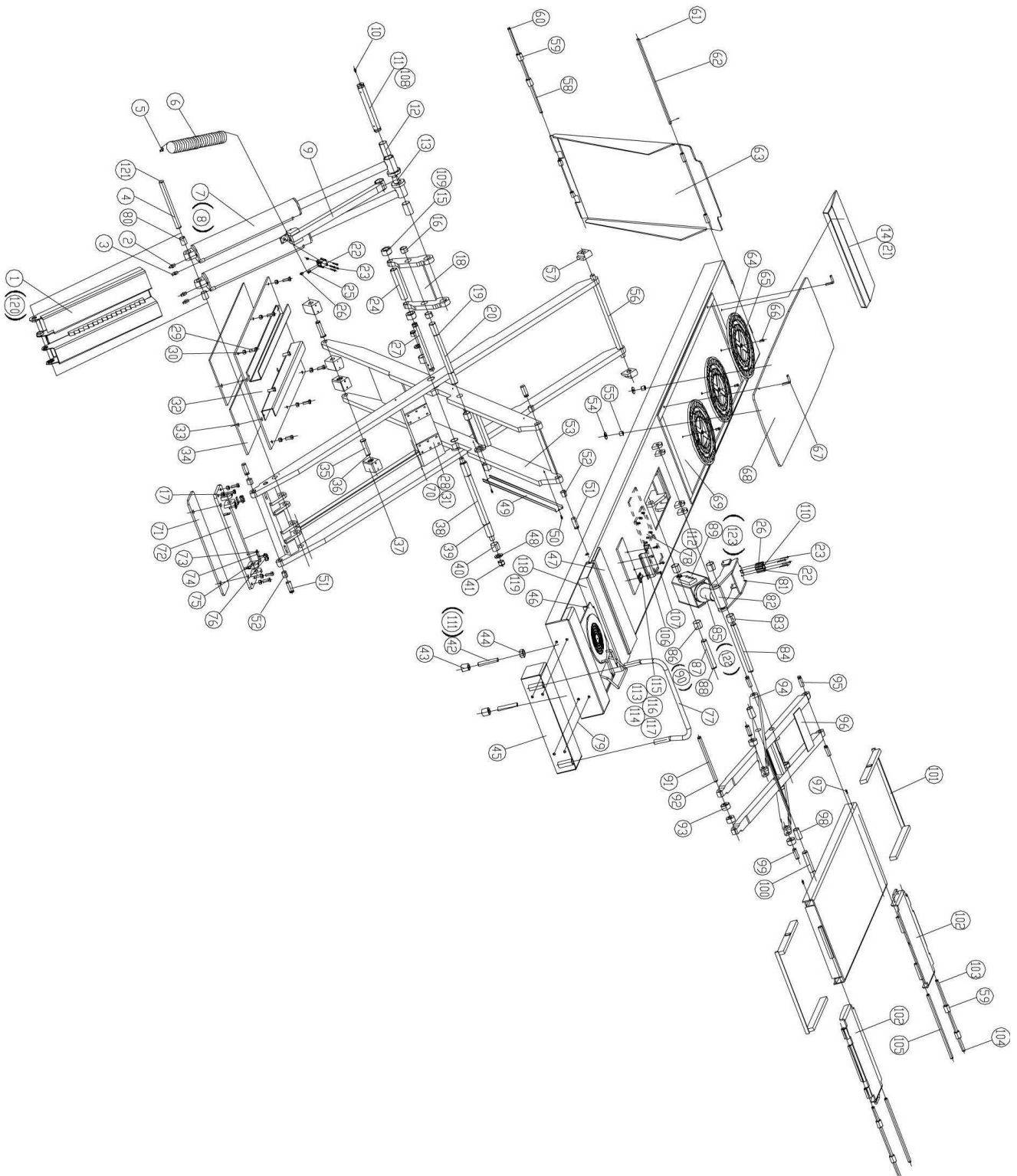


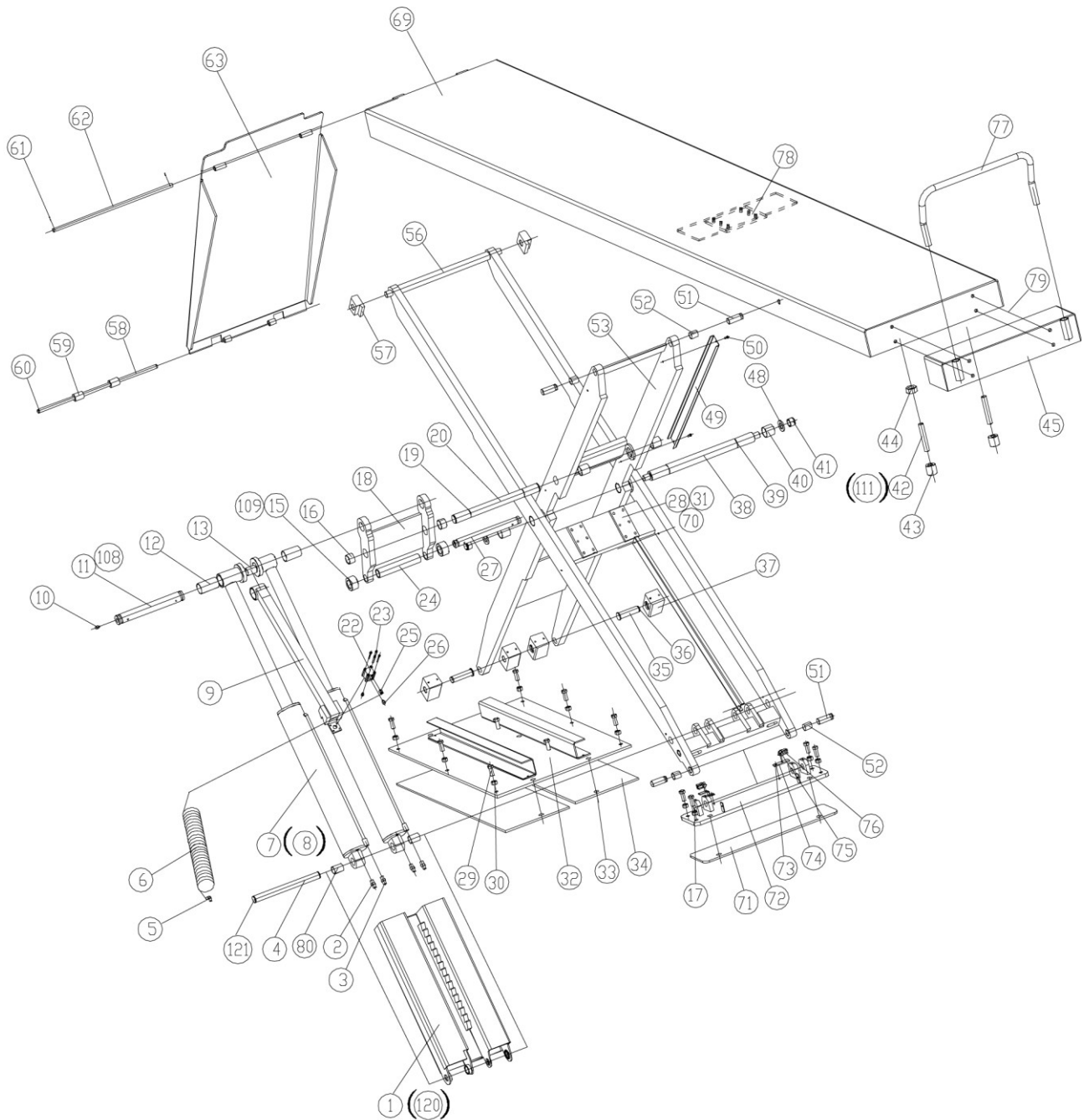
Wiring diagram for Type S


Wiring diagram for Type S



**Annex 6, Separated drawings for the lift
Type B**



Type S


S/N	Material#	Name	Drawing#/Size	Qty	Property	Note
1	614025008	Drive oil cylinder sheath	6604B-A4-B3	1	welded	
2	615019006	Straight throttle valve	6501-A4-B15	2	assembly	
3	615019005	Connector B	6501-A4-B16	4	45	
4	410250071	DOWN shaft of oil cylinder	6604B-A4-B5	2	45	
5	310102026	Bend quick air hose connector	KLV-8	2	standard	






S/N	Material#	Name	Drawing#/Size	Qty	Property	Note
6	310601001	Tensile tube	CL-0850-6	1	standard	
7	615025004	Drive oil cylinder of the lift	6604B-A4-B1	2	assembly	
8	615025017	Assistant oil cylinder of the lift	6604B-A24-B2	2	assembly	
9	614025009C	Safety lock	6604B-A4-B4	2	welded	
10	208106001	Oil cup	M8*1	8	standard	JB/T 7940.1-1995
11	612025001C	UP shaft of oil cylinder	6604B-A7-B2	2	welded	
12	205101040	Bearing	4070	4	standard	SF-1
13	205101036	Bearing	4050	2	standard	SF-1
14	614025004	Slanting board	6604B-A1-B9	2	welded	
15	410250231	Start rotor wheel	6604B-A7-B6	4	45	
16	205101026	Bearing	3525	4	standard	SF-1
17	202103020	Cross socket flat head screw	M8*12	12	standard	GB/T819.1-2000
18	614025012B	Start rotor plate	6604B-A7-B1	2	welded	
19	204301012	Circlip	M35	4	standard	GB/T 894.2-1986
20	612025003	Mid shaft	6604B-A7-B4	2	welded	
21	202109021	Hex socket cylinder head screw	M6*20	6	standard	GB/T 70.1-2000
22	310501003	Air cylinder	CQ2B 32*20	4	standard	
23	202109014	Hex socket cylinder head screw	M5*45	16	standard	GB/T 70.1-2000
24	420250030	Spacer	6604B-A7-B5	2	Nylon	
25	310102024	Bend quick air hose connector	KLL8-01	2	standard	
26	310201003	Muser	SLM01	4	standard	
27	612025004	Rotor shaft	6604B-A7-B3	2	welded	
28	206104001	Inside swivel post pin	10*22	12	standard	GB/T120.2-2000
29	201102035	Hex head full swivel screw	M14*30	28	standard	GB/T 5781-2000
30	203101008	Hex nut	M14	8	standard	GB/T 6170-2000
31	410250061	Rotor wheel pad	6604B-A3-B8	4	Q345	
32	614025011B	Base B	6604B-A6-B1	2	welded	
33	201201005	Expansion bolt	M16*120	16	standard	
34	410250103	Floor padding plate	6604B-A22	4	Q235A	
35	410250031	Down moving shaft	6604B-A3-B5	4	45	
36	204301009	Circlip	M25	4	standard	GB/T 894.2-1986
37	420250080B	Base slider	6604B-A3-B4	8	POM	
38	410250051B	Bracket mid shaft	6604B-A3-B7	2	45	
39	204301014	Circlip	M40	4	standard	GB/T 894.2-1986
40	205101035	Bearing	4040	8	standard	SF-1
41	203103011	Hex locking nut	M24	4	standard	
42	202205004	Hex socket flat head tightening nut	M20*120	4	standard	GB/T 77-2000
43	420260010	Adjustable nylon slider	6605B-A1-B8	8	Nylon	
44	203101012	Hex nut	M20	12	standard	GB/T 6170-2000
45	614025002	Box	6604B-A1-B2	2	standard	6604B.46L
46	615027013	Turntable	6435B-A28	2	assembly	
47	614025023	Box	6604B-A2	2	welded	




S/N	Material#	Name	Drawing#/Size	Qty	Property	Note
48	204101014	Flat washer C	M27	4	standard	GB/T 95-1985
49	410250043B	Oil hose protector (50*10 left)	6604B-A14	2	Q235A	
	410250123B	Oil hose protector (50*10 right)		2	Q235A	
	410250133B	Oil hose protector (50*10)		4	Q235A	
50	202111017	Hex socket flat head screw	M6*30	16	standard	GB/T 70.3-2000
51	612025002	Bracket holder shaft	6604B-A3-B6	8	welded	
52	205101012	Bearing	2530	8	standard	SF-1
53	614025007B	Bracket B	6604B-A3-B2	2	welded	
54	410250011	Washer	6604B-A1-B5	4	Q235A	
55	420250010	Nylon sheath	6604B-A1-B3	4	Nylon	
56	614025006	Bracket A (welding)	6604B-A3-B1	2	welded	
57	420250070B	Platform slider	6604B-A3-B3	4	POM	
58	410250201	Ramp wheel shaft	6604B-A13-B2	2	45	
59	420180010	Small wheel	MR30-A22-B5	4	Nylon	
60	204301004	Circlip	M15	4	standard	GB/T 894.2-1986
61	204301002	Circlip	M12	4	standard	GB/T 894.2-1986
62	410250211	Ramp shaft	6604B-A13-B3	2	45	
63	614025018	Ramp	6604B-A13-B1	2	welded	
64	420270100	Ball holder	6435B-A20	6	POM	
65	420270110	Ball	6435B-A21	240	POM	
66	202103024	Cross socket flat head screw	M10*25	6	standard	GB/T819.1-2000
67	410250221	Bolt	6604B-A16	4	Q235A	
68	614025003	Side slip	6604B-A1-B4	2	welded	
69	614025100	Platform	6604B-A1-B1	2	welded	6604B.42L
	614025001B	Platform	6604B-A1-B1	2	welded	6604B.46L
70	202110007	Hex socket button head screw	M10*20	16	standard	GB/T 70.2-2000
71	410250093	Floor padding plate A	6604B-A21	2	Q235A	
72	614025010B	Base A	6604B-A5-B1	2	welded	
73	410250013	Plate for down limit switch	6604B-A5-B2	1	Q235A	
74	202101029	Cross socket cap head screw	M6*12	1	standard	GB/T 818-2000
75	320302002	Proximity switch	PL-05N	1	standard	
76	202101002	Cross socket cap head screw	M3*15	2	standard	GB/T 818-2000
77	410210101	Wheel baffle	6603B-A4-B2	2	Q235A	
78	410250021B	Start rotor plate	6604B-A1-B6	2	Q345	
79	202109050	Hex socket cylinder head screw	M12*20	8	standard	GB/T 70.1-2000
80	205101015	Bearing	2840	4	standard	SF-1
81	614025026	Safety lock assembly	6604B-A11-B3	2	welded	
82	410210430	Three way oil cylinder connector (small)	6603B-A3-B8	2	HT200	
83	205101025	Bearing	3058	8	standard	SF-1
84	410250181	UP shaft of JACK's oil cylinder	6604B-A11-B5	2	45	
85	615025012	Drive cylinder of the jack	6604B-A11-B1	1	assembly	
86	205101024	Bearing	3055	2	standard	SF-1

S/N	Material#	Name	Drawing#/Size	Qty	Property	Note
87	410210091B	DOWN shaft of JACK's oil cylinder	6603B-A3-B7	1	45	
88	204301011	Circlip	M30	16	standard	GB/T 894.2-1986
89	614025025	Cylinder sheath of the JACK's driving cylinder	6604B-A11-B2	1	welded	
90	205101022	Bearing	3045	2	standard	SF-1
91	410250121B	Down wheel shaft of the JACK	6604B-A8-B5	2	45	
92	204301007	Circlip	M20	16	standard	GB/T 894.2-1986
93	420250040	Wheel of the JACK	6604B-A8-B3	8	Nylon	
94	614025013	Bracket A	6604B-A8-B1	2	welded	
95	410250131	Holder shaft of the JACK	6604B-A8-B6	8	45	
96	614025014	Arm B	6604B-A8-B2	2	welded	
97	202110002	Hex socket button head screw	M6*10	8	standard	GB/T 70.2-2000
98	205101023	Bearing	3050	4	standard	SF-1
99	410250141	UP wheel shaft of the JACK	6604B-A8-B7	4	45	
100	410250111	Mid shaft of the JACK	6604B-A8-B4	2	45	
101	614025017	Drawable plate	6604B-A9-B3	4	welded	
102	614025016	Ramp of the JACK (left)	6604B-A9-B2-C1	2	welded	
	614025022	Ramp of the JACK (right)	6604B-A9-B2-C1	2	welded	
103	410250161	Ramp wheel shaft of the JACK	6604B-A9-B2-C3	4	45	
104	204301004	Circlip	M15	16	standard	GB/T 894.2-1986
105	410250151	Ramp shaft of the JACK	6604B-A9-B2-C2	4	45	
106	410250033B	DOWN baffle plate of the JACK	6604B-A10	2	Q235A	
107	202109027	Hex socket button head screw	M8*12	8	standard	GB/T 70.1-2000
108	202111004	Hex socket flat head screw	M8*12	2	standard	GB/T 70.3-2000
109	205101020	Bearing	3030	4	standard	SF-1
110	310101024	Straight quick air hose connector	KLC6-01	2	standard	
111	202205005	Hex socket flat head tightening screw	M20*140	4	standard	GB/T 77-2000
112	201102016	Hex head full swivel screw	M10*15	8	standard	GB/T 5781-2000
113	320301012	Limit switch	TZ8104	1	standard	
114	410250241B	Baffle plat for limit switch	6604B-A26	1	Q235A	
115	202101027	Cross socket cap head screw	M6*8	2	standard	GB/T 818-2000
116	202101009	Cross socket cap head screw	M4*14	2	standard	GB/T 818-2000
117	202101010	Cross socket cap head screw	M4*25	2	standard	GB/T 818-2000
118	202109030	Hex socket cylinder head screw	M8*25	8	standard	GB/T 70.1-2000
119	614025024	Box	6604B-A1-B10	4	welded	
120	614025019	Sheath of the oil cylinder	6604B-A24-B1	1	welded	
121	204301010	Circlip	M28	4	standard	GB/T 894.2-1986
122	615025014	Cylinder of the JACK	6604B-A12-B1	1	assembly	
123	614025027	Sheath of the cylinder	6604B-A12-B2	1	welded	

Annex7, Spare parts list
Spare parts list –electrical parts

S/N	Material #	Item	Spec.	Qty	Unit	Pic.
1	320304001	Power switch	LW26GS-20/04	pcs	1	
2	320401005	Button	Y090-31BN	pcs	3	
3	321201001	Power indicator	AD17-22G-AC24	pcs	1	
4	320101032	Transformer	JBK3-100VA 220V-24V	pcs	1	Same as item 7
5	320101033	Transformer	JBK3-100VA 230V-24V	pcs	1	Same as item 7
6	320101034	Transformer	JBK3-100VA 240V-24V	pcs	1	Same as item 7
7	320101035	Transformer	JBK3-100VA 380V-24V	pcs	1	
8	320101036	Transformer	JBK3-100VA 400V-24V	pcs	1	Same as item 7
9	320101037	Transformer	JBK3-100VA 415V-24V	pcs	1	Same as item 7
10	320901001	AC contactor	CJX2-1210/AC24	pcs	1	
11	320801001	Circuit breaker	DZ47-63 C16 /3P	pcs	1	
12	320803003	Circuit breaker	DZ47-63 C32 /2P	pcs	1	
13	320803003	Circuit breaker	DZ47-63 C3 /1P	pcs	1	

S/N	Material #	Item	Spec.	Qty	Unit	Pic.
14	310401001	Pneumatic solenoid valve	3V210-08/DC24	pcs	2	
15	320301012	Limit switch	TZ8104	pcs	1	
16	320303002	Option switch	Y90-11x/21	pcs	1	
17	320303003	Option switch	Y90-11x/3	pcs	1	
18	321002001	Bridge rectifier	KBPC5A-35A	pcs	1	
19	321001004	Capacitor	4700UF/50V	pcs	1	
20	321204001	Control box	Big	pcs	1	
21	320602001	Time relay	ST6P-2AC24V delay 5S	pcs	1	
22	320302001	Proximity switch	PL-05N	pcs	1	

S/N	Material #	Item	Spec.	Qty	Unit	Pic.
23	320401003	Button	Y090-20BN	pcs	1	
24	320602006	Time relay holder	PYF-08A-E	pcs	1	
25	320301011	Limit switch	TZ8108	pcs	1	

Spare parts list –mechanical parts

S/N	Material #	Item	Spec.	Qty	Note
1	420250070B	Platform slider (for the lift)	6604B-A3-B3	4	
2	420250080B	Base slider (for the lift)	6604B-A3-B4	8	
3	207103012	Y shape seal ring	B7-90*80*7	2	Drive oil cylinder piston (the lift)
4	207103022	Y shape seal ring	BS50*60*6	1	Drive oil cylinder (the lift)
5	207105007	Dust proof ring	DHS50*58*6	1	Drive cylinder
6	207103013	Y shape seal ring	B7-75*65*7	1	Oil cylinder (the lift)
7	207105008	Dust proof ring	DHS45*53*6	1	Cylinder of the lift
8	207103014	Y shape seal ring	B7-100*90*7	2	Drive cylinder piston of the JACK
9	207103023	Y shape seal ring	BS60*70*6	1	Drive cylinder of the JACK
10	207105009	Dust proof ring	DHS60*68*6	1	Drive cylinder of the JACK
11	207103015	Y shape seal ring	B7-80*70*7	1	Cylinder piston of the JACK
12	207105008	Dust proof ring	DHS45*53*6	1	Cylinder of the JACK