

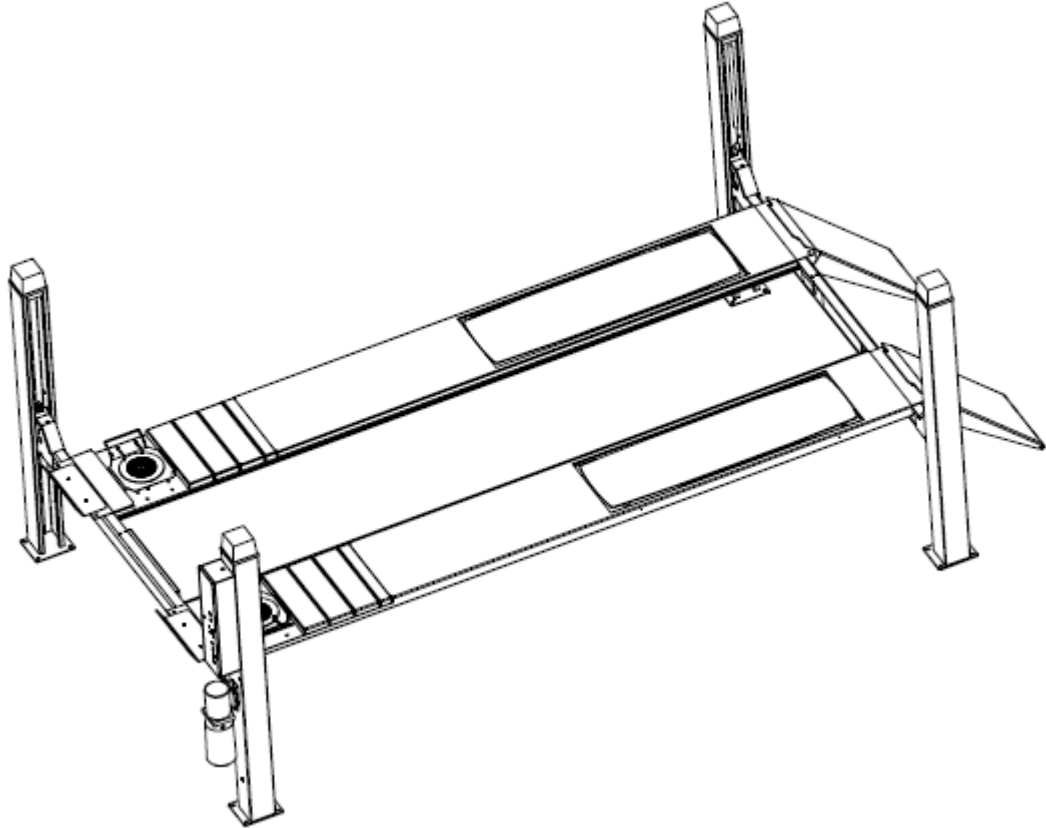


Ever-Eternal

EE – 6435S, 6435A, 6435B

Electrical Release

FOUR POST LIFT



ATTENTION: READ THIS ENTIRE MANUAL BEFORE
INSTALLATION TO ENSURE A CORRECT OPERATION AND
LONG SERVICE LIFE.

INSTALLATION/OWNERS MANUAL

Read this manual thoroughly before installing, operating, or maintaining this lift. When done with installation, be sure to return documents to package and give all materials to lift owner/operator. When installation is complete be sure to run lift up and down a few cycles with and without typical vehicle loaded on lift.

TABLE OF CONTENTS

IMPORTANT INFORMATION.....	2
LIFT SPECIFICATIONS & FLOOR PLAN.....	3~5
INSTALLATION INSTRUCTIONS.....	6~11
PARTS (OPTIONAL).....	12
PREVENTIVE MAINTENANCE SCHEDULE.....	13
TROUBLESHOOTING.....	14
INTRODUCTION&OPERATION.....	15~16
ANNEX.....	17~26
ANNEX1-WIRE ROPE CONNECTION	
ANNEX2-HYDRAULIC CONNECTION	
ANNEX3-WIRING DIAGRAM	
ANNEX4-EXPLODED PARTS LIST	

□

IMPORTANT INFORMATION

1. Do not install the lift on any asphalt surface
2. Read and understand all safety warning procedures before operating the lift.
3. The lift, in its standard version, is not designed for outdoor use.
4. Keep hands and feet away from any moving parts. Keep feet clear of lift when lowering.
5. The lift may only be used by qualified staff, properly trained for the specific use of the machine.
6. Do not wear unfit clothes such as large clothes with flounces, ties, etc, which could get caught by moving parts of the machine.
7. The lift surrounding area must be free from people or objects which could be a danger for lifting operations.
8. The lift is only designed to lift the entire body of vehicle, having maximum weight not more than the lift capacity.
9. Always insure the safety devices are engaged before any attempt to work on or near vehicle.
10. The vehicle must be centered and positioned in a stable correct way with respect to the posts and following the instructions given by manufacturer.
11. Make sure that the machine and its devices are working correctly, according to the specific instructions for maintenance.
12. Lower the lift to its lowest position when service finish.
13. Do not modify the machine without manufacturer's advice.
14. If the machine is not to be used any more, owners are suggested to remove the power supply connections, empty the oil tank and dispose the liquids by right way.
15. If the lift is to be left unused for a long period, proceed as follows:
 - a. Disconnect the energy source;

- b. Empty the oil tank.
- c. Grease the moving parts which might be damaged by dust or drying out.

LIFT SPECIFICATIONS & FLOOR PLAN



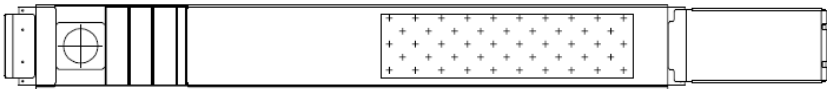
6435S

S series: flat platform



6435A

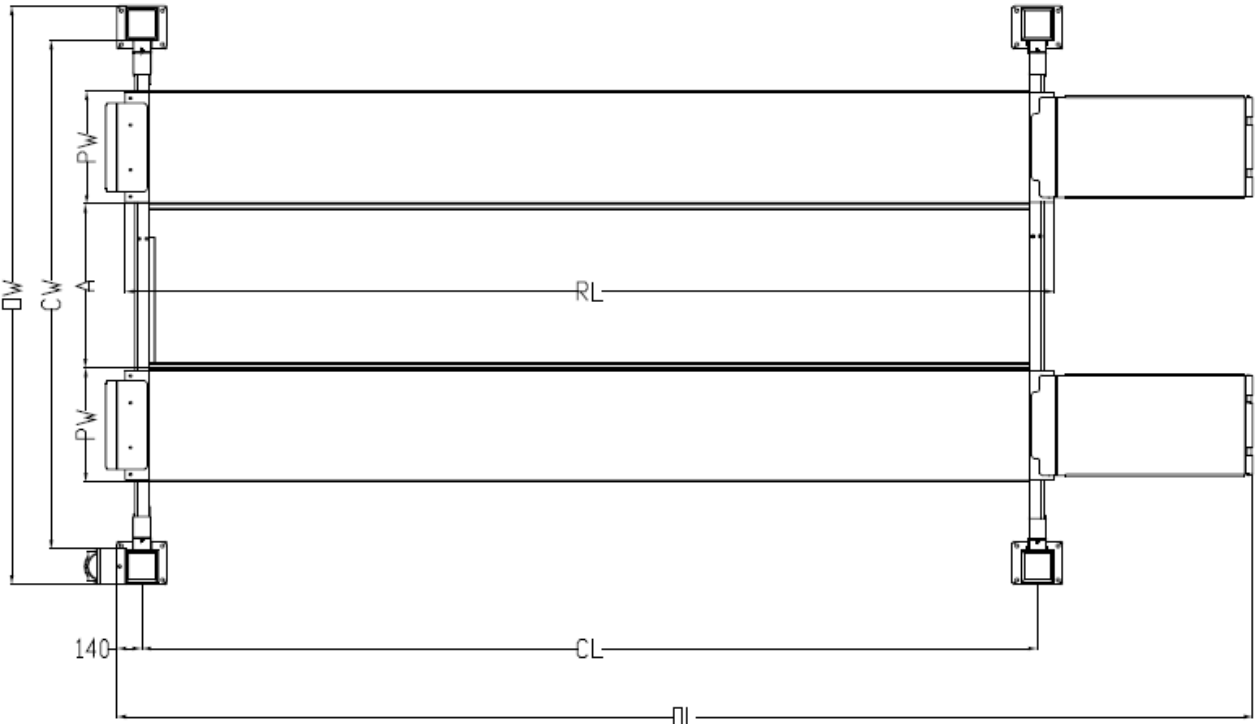
A series: With flexible turntable position



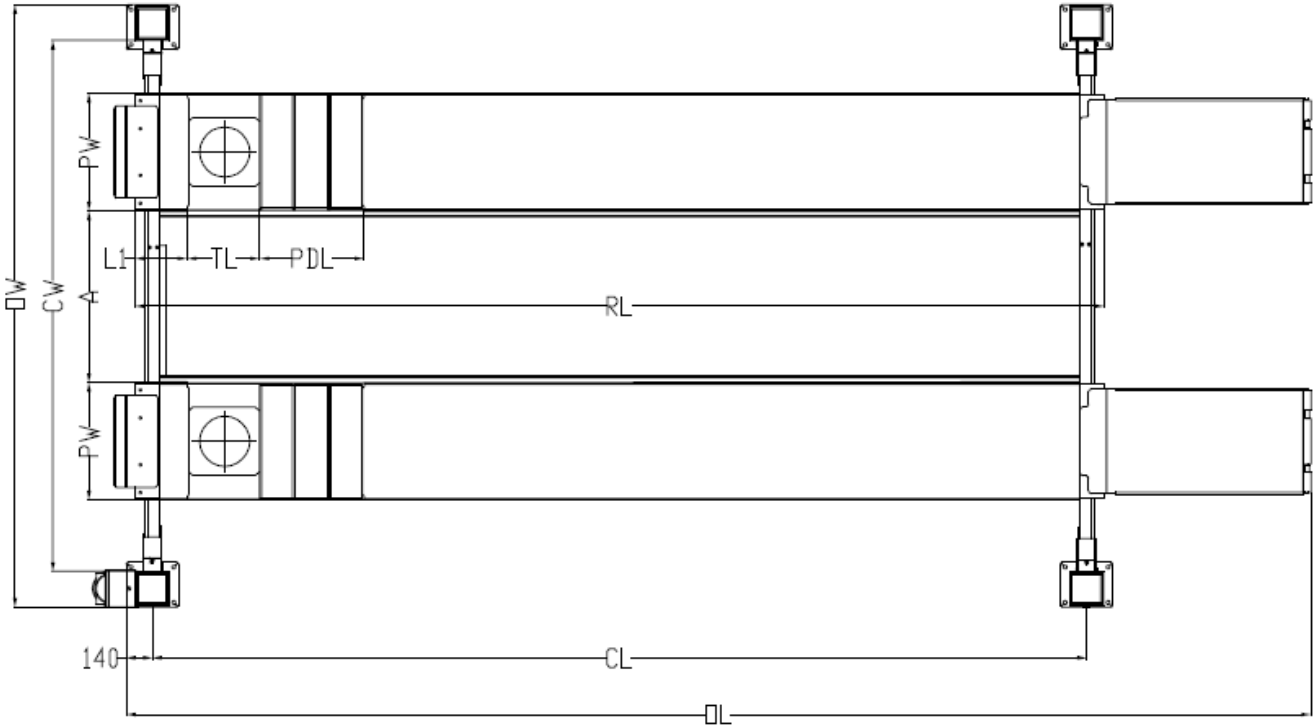
6435B

B series: With flexible turntable position and rear side slip

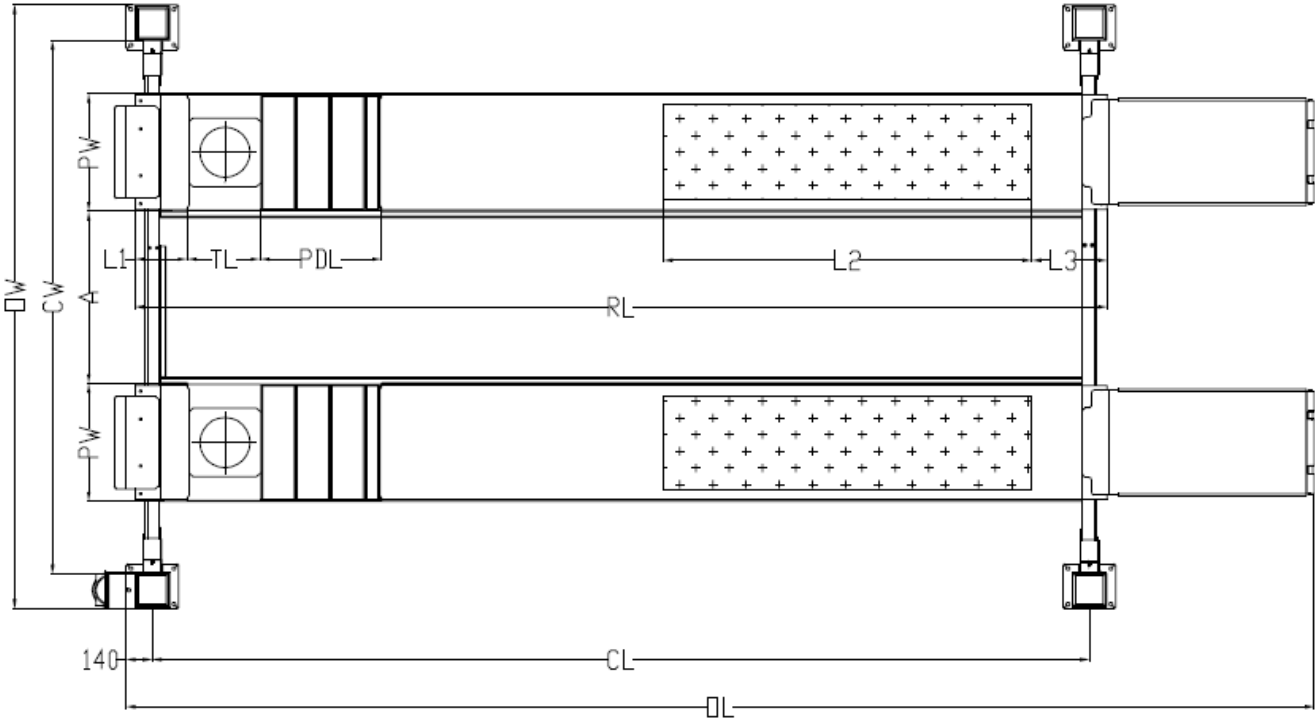
6435S



6435A



6435B



TECHNICAL DATA

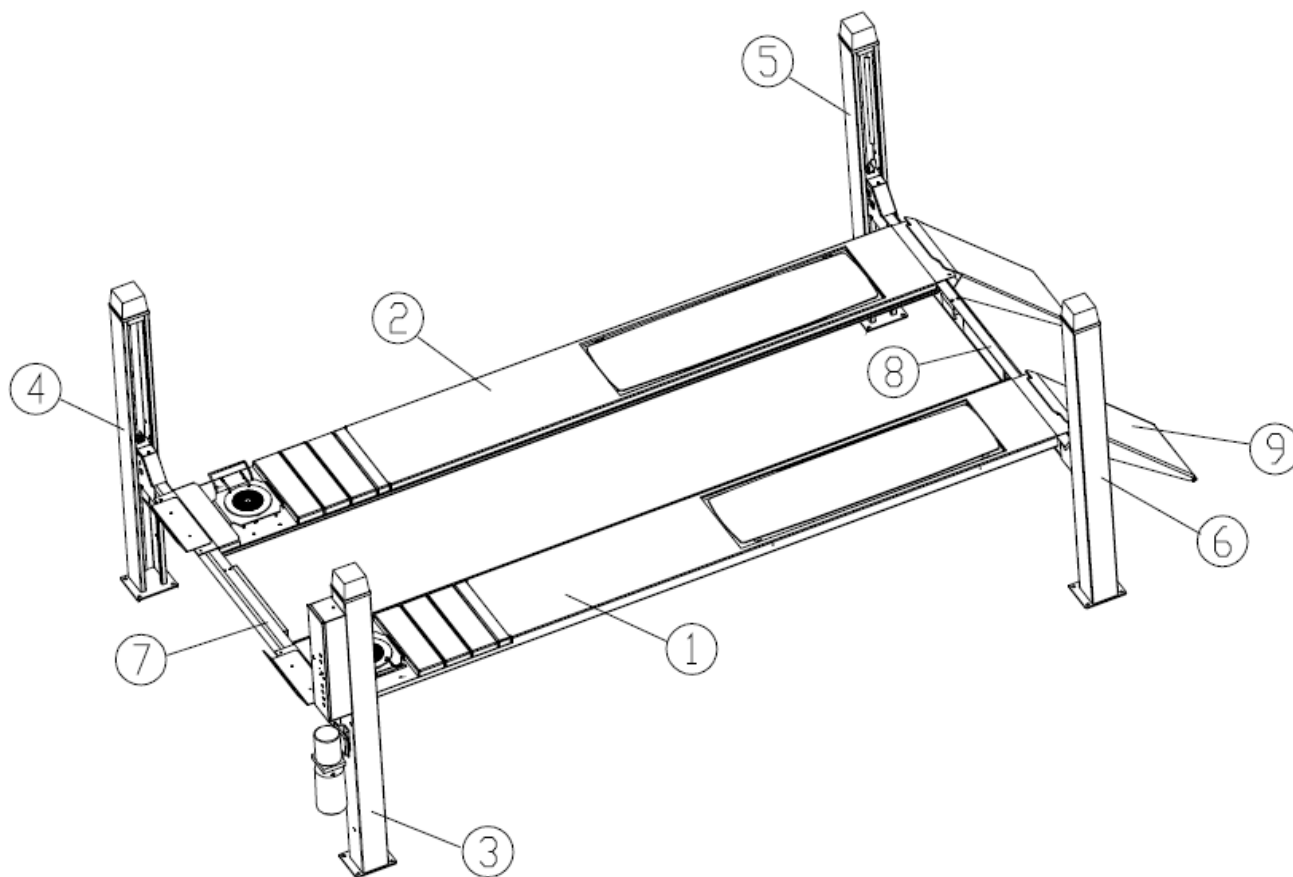
MODEL	LIFTING CAPACITY	LIFTING HEIGHT	HEIGHT	RL	OL	CL	OW	CW	PW	A	TL	PDL	L1	L2	LB
EE-6435S SERIES															
EE-6435S	4.0T	155/1830	2338	4560	5700	4640	3160	2700	565	800~890	/	/	/	/	/
EE-6435S.48				4800	5940	4880	3310	2850	630	740~1025					
EE-6435S.52	5200			6340	5280	3310	2850	630	740~1025						
EE-6435S.48	5.0T			4800	5940	4880	3310	2850	630	740~1025					
EE-6435S.52				5200	6340	5280	3310	2850	630	740~1025					
EE-6435A SERIES															
EE-6435A	4.0T	155/1830	2338	4560	5700	4640	3160	2700	565	800~890	390	560	250	/	/
EE-6435A.48				4800	5940	4880	3310	2850	630	740~1025	390	560	280		
EE-6435A.52	5200			6340	5280	3310	2850	630	740~1025	390	560	280			
EE-6435A.48	5.0T			4800	5940	4880	3310	2850	630	740~1025	390	560	280		
EE-6435A.52				5200	6340	5280	3310	2850	630	740~1025	390	560	280		
EE-6435B SERIES															
EE-6435B	4.0T	155/1830	2338	4560	5700	4640	3160	2700	565	800~890	390	650	250	1435	370
EE-6435B.48				4800	5940	4880	3310	2850	630	740~1025	390	650	280	1600	370
EE-6435B.52	5200			6340	5280	3310	2850	630	740~1025	390	650	280	1825	465	
EE-6435B.48	5.0T			4800	5940	4880	3310	2850	630	740~1025	390	650	280	1600	370
EE-6435B.52				5200	6340	5280	3310	2850	630	740~1025	390	650	280	1825	465

INSTALLATION INSTRUCTIONS

TOOLS REQUIRED

- Rotary Hammer Drill with "3/4" drill bit.
- Sockets and Open wrench set.
- Square ruler.
- AW 32, 46 or other good quality garage hydraulic oil

Overall Diagram



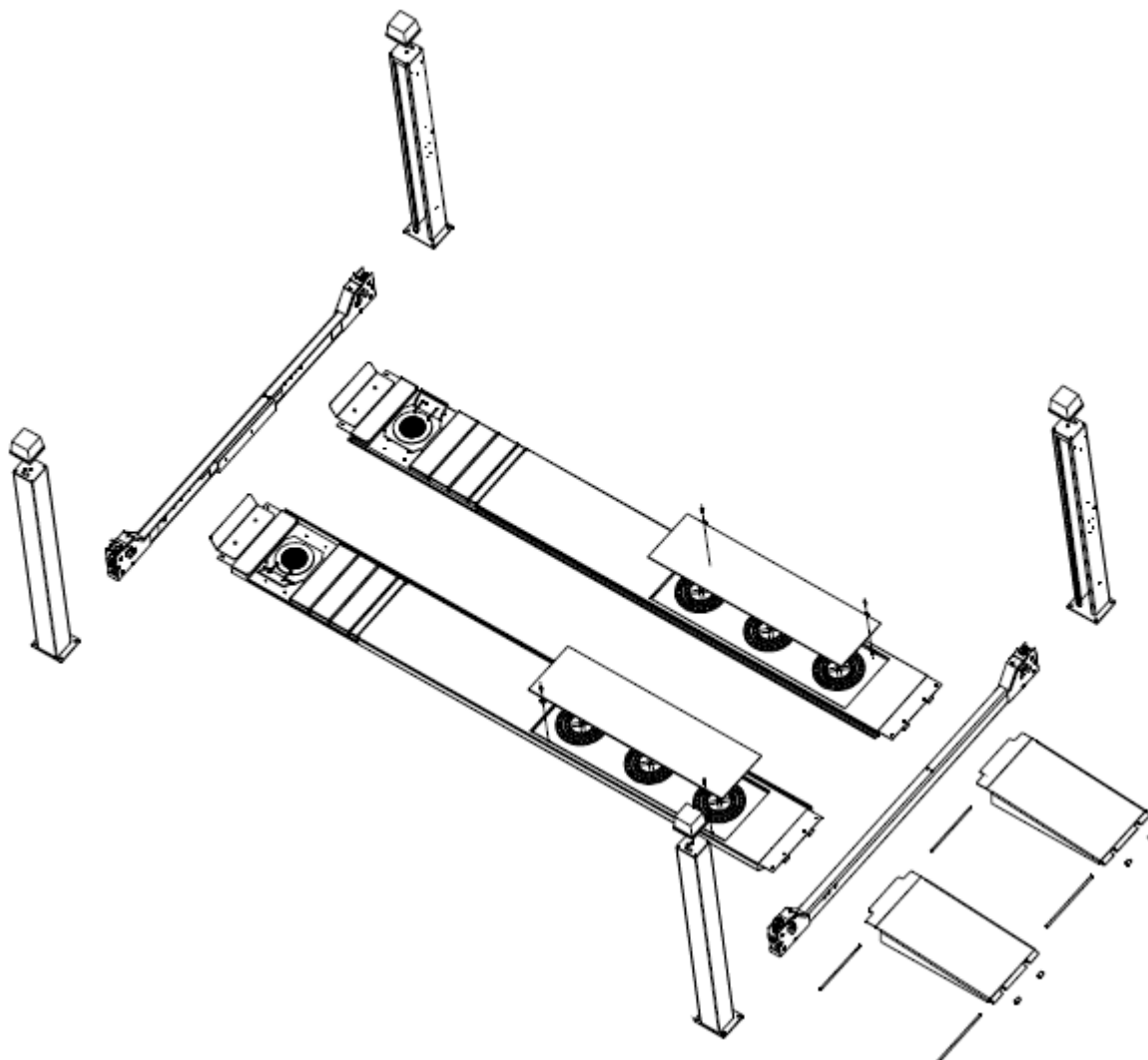
1. Platform A
2. Platform B
3. Main post 1
4. Post 2
5. Post 3
6. Post 4
7. Main crossbeam
8. Assistant crossbeam
9. Drive-on approach ramp

BEFORE INSTALLATION

1. Identify the components and check for shortages. Contact us immediately if shortage discovered.
2. Installation, adjusting and testing operations are to be performed by qualified staff only.
3. The lift must be installed on a level concrete floor, having minimum thickness of 20cm

INSTALLATION STEPS

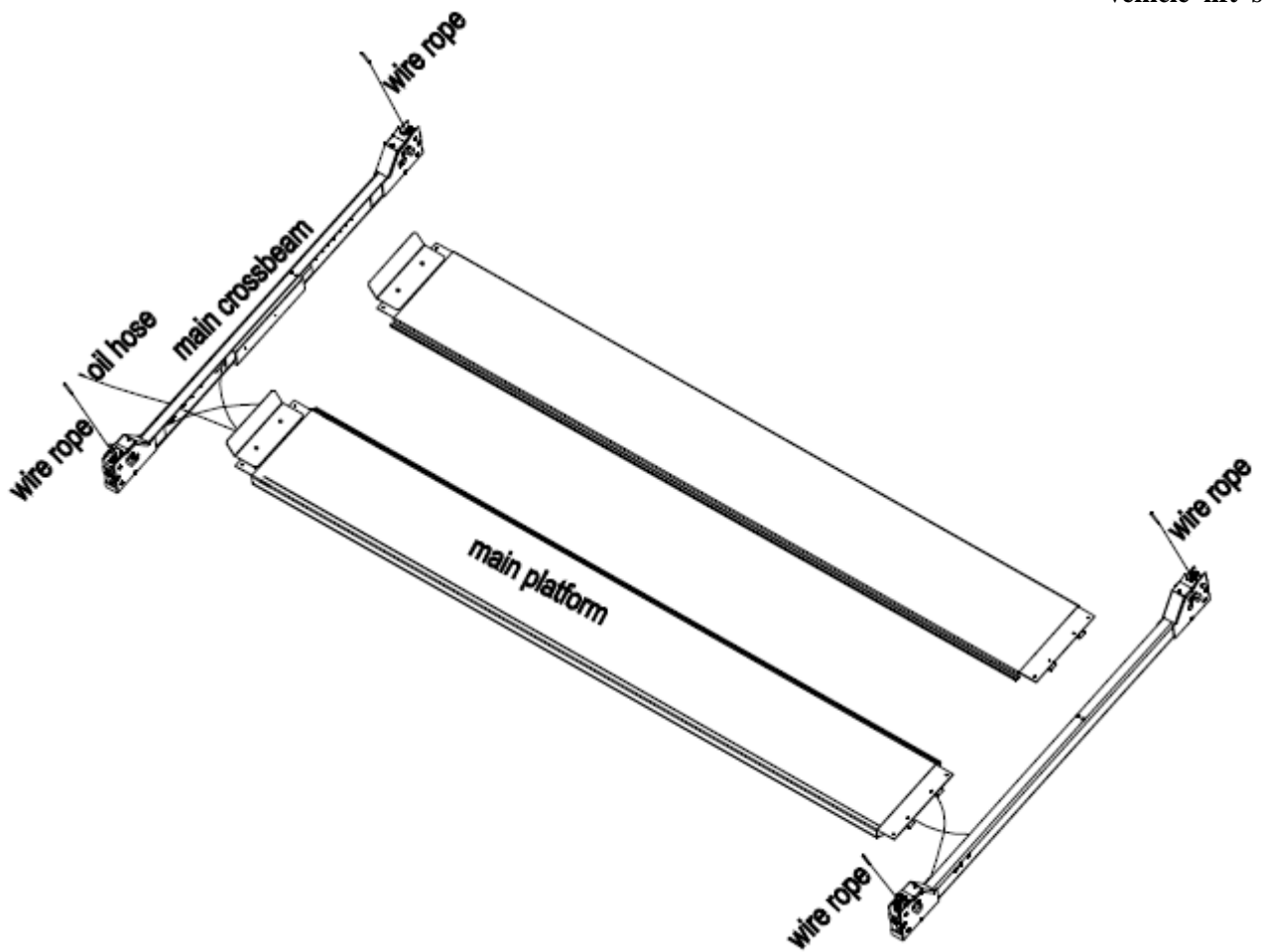
PLEASE READ THE FOLLOWING INSTRUCTIONS BEFORE ASSEMBLING THE LIFT.



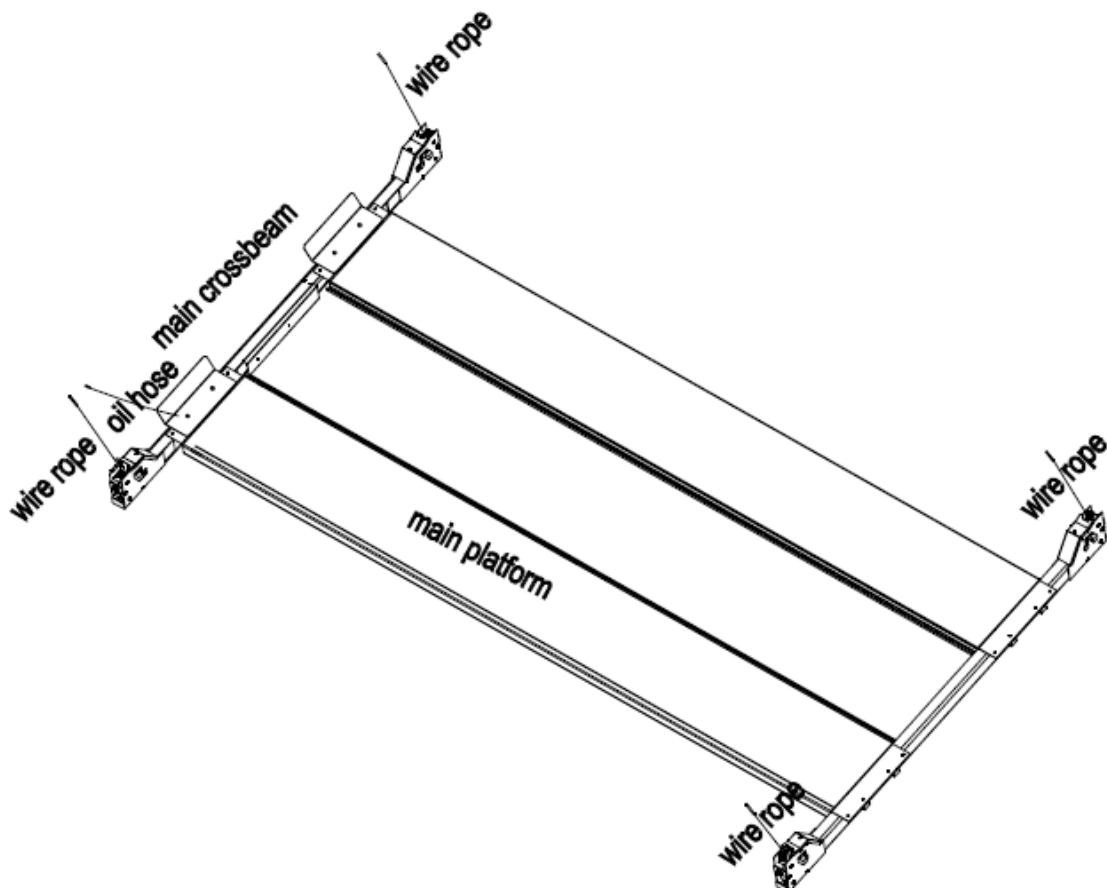
STEP ONE: PLACE THE TWO PLATFORM AND TWO CROSSBEAMS

The platforms have been connected before shipping, which include cylinder connection, wire rope connection and oil hose connection.

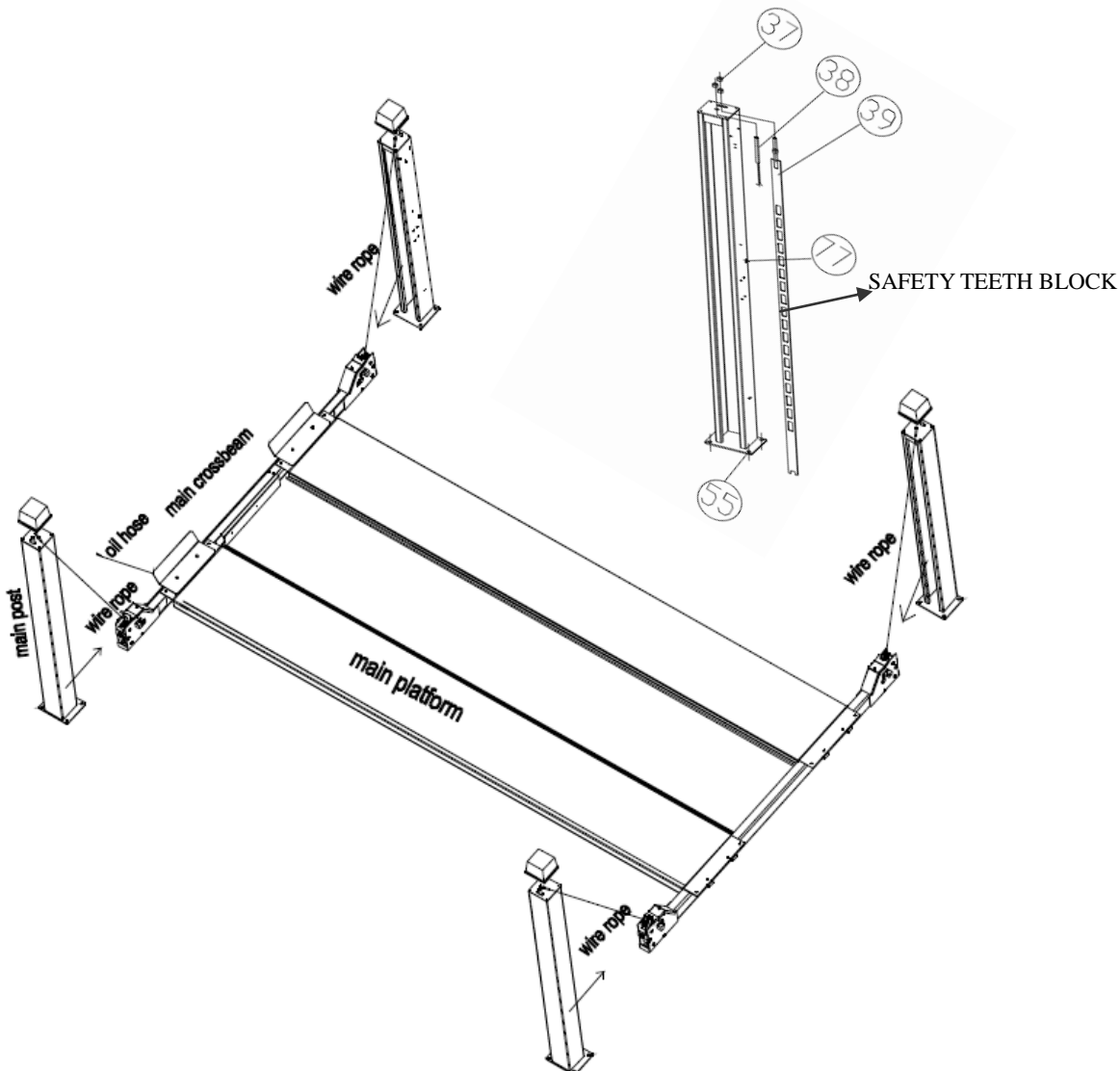
The crossbeams have been connected before shipping, which include connection of limit switch, safety latch, electromagnet, etc. Insert the crossbeam to the platform and tighten them with bolts and nuts.



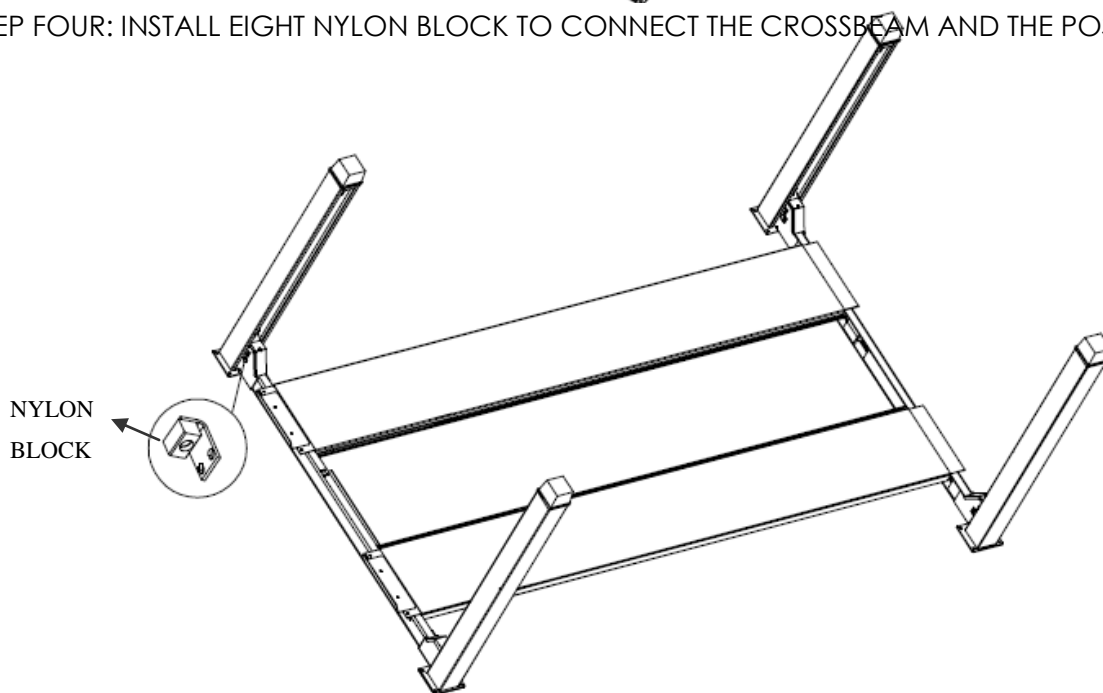
STEP TWO: CONNECT THE CROSSBEAM AND THE PLATFORM & PULL OUT THE WIRE ROPE AND THE OIL HOSE FROM THE MAIN PLATFORM.



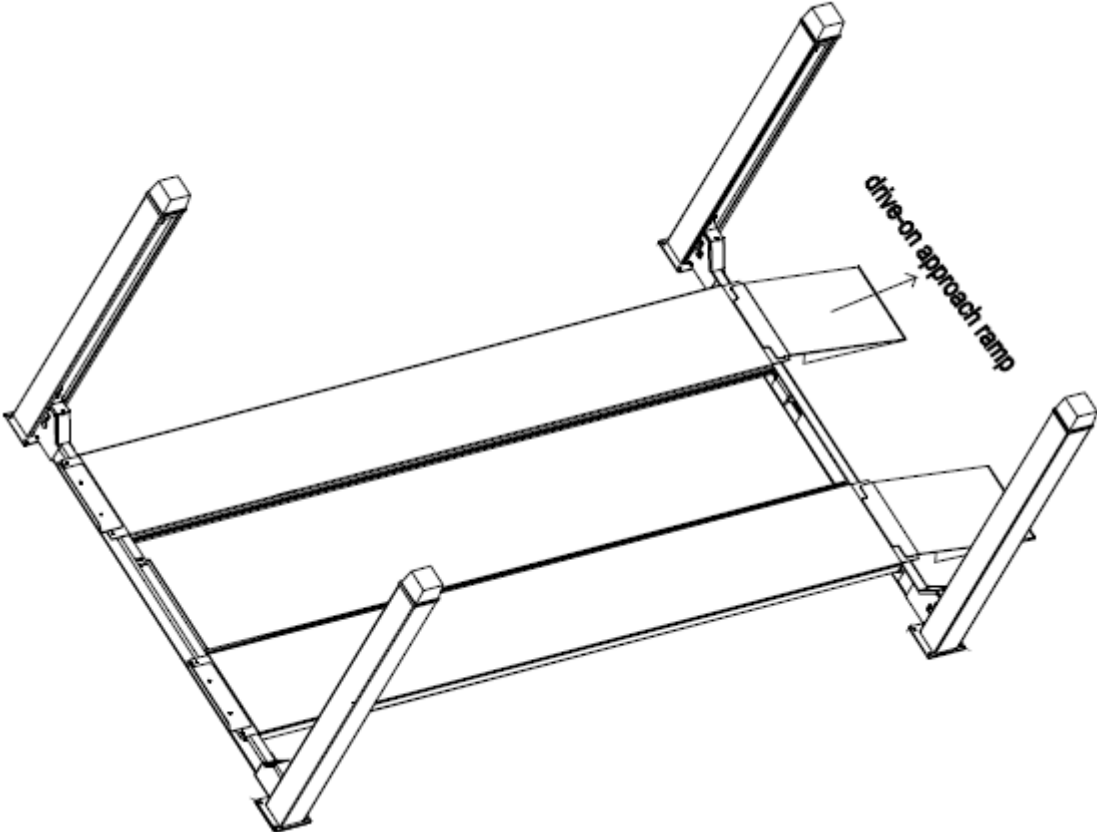
STEP THREE: INSERT THE FOUR SAFETY TEETH BLOCK TO THE FOUR POSTS&CONNECT THE WIRE ROPE PULLED OUT FROM THE MAIN PLATFORM IN STEP TWO TO THE FOUR POSTS.



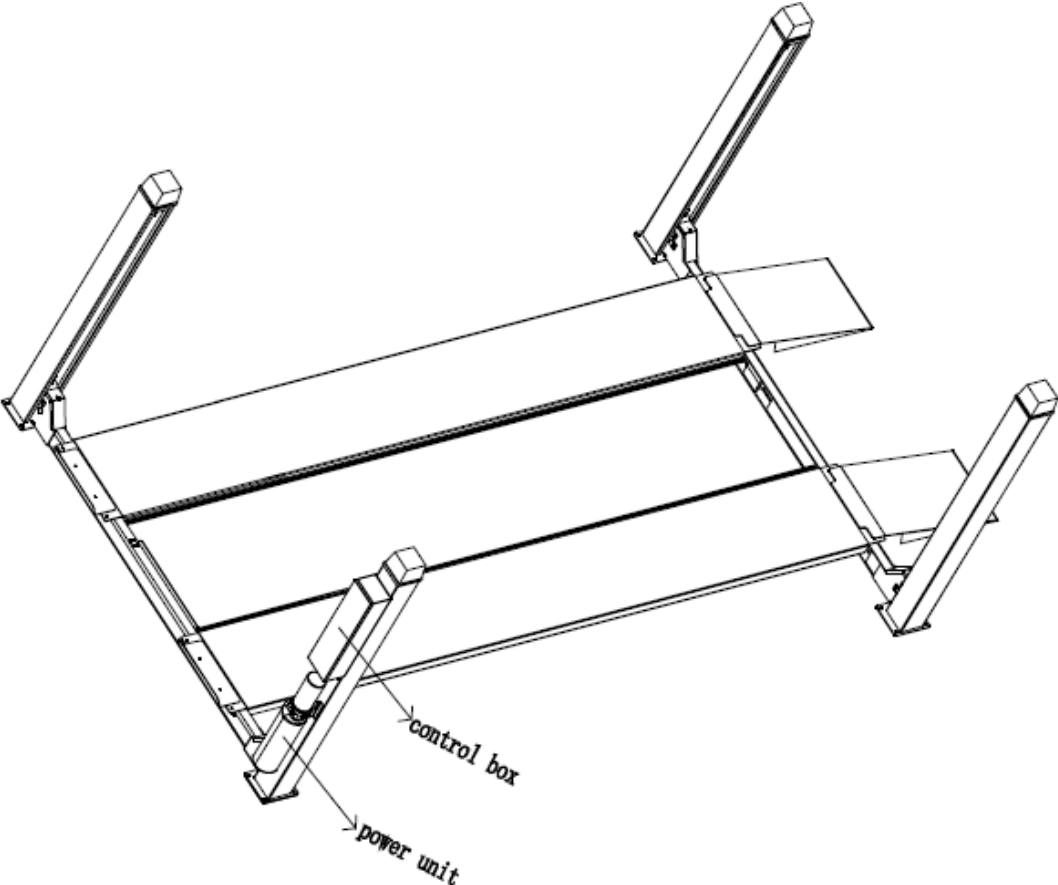
STEP FOUR: INSTALL EIGHT NYLON BLOCK TO CONNECT THE CROSSBEAM AND THE POSTS



STEP FIVE, INSTALL THE DRIVE-ON APPROACH RAMP



STEP SIX: INSTALL FOUR TOPPER COVER, MOUNT THE POWER UNIT AND CONTROL BOX,CONNECT THE OIL HOSE PULLED OUT FROM THE MAIN PLATFORM IN STEP TWO TO THE POWER UNIT.



STEP SEVEN; LEVEL THE PLATFORM. DO NOT PLACE ANY VEHICLE IN THIS STEP.

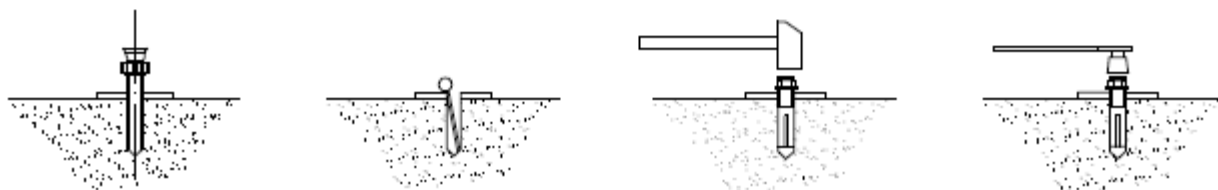
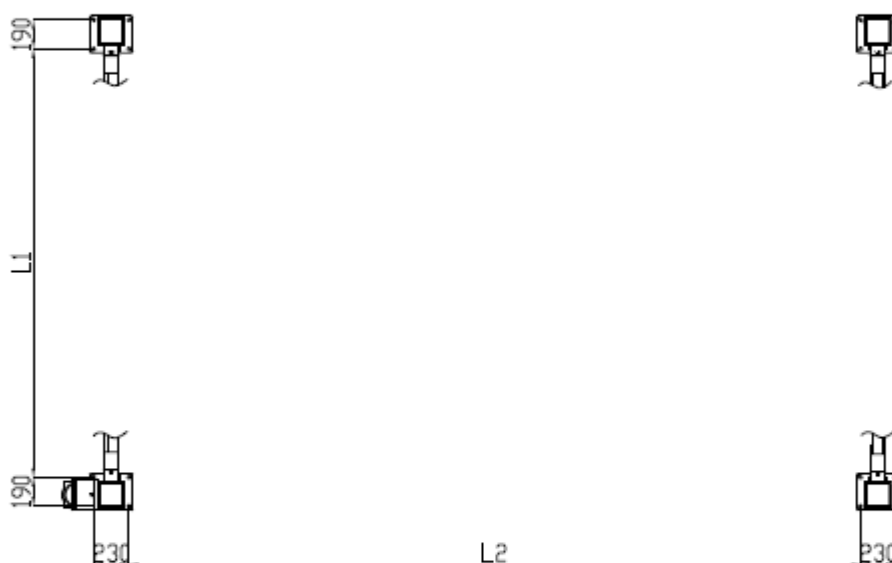
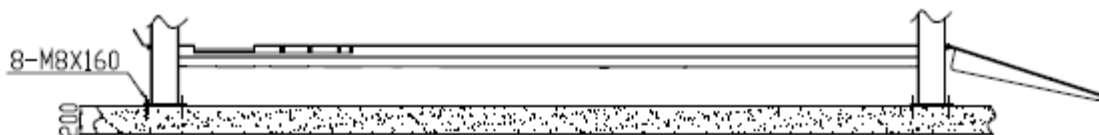
STEP EIGHT: INSTALL LAND BOX (6435A)

INSTALL PD - (OPTIONAL) (6435A)

STEP NINE: INSTALL THE SIDE SLIDING BOARD AND TURNTABLE (6435B)

INSTALL PD - (OPTIONAL) (6435B)

STEP TEN: ANCHORING

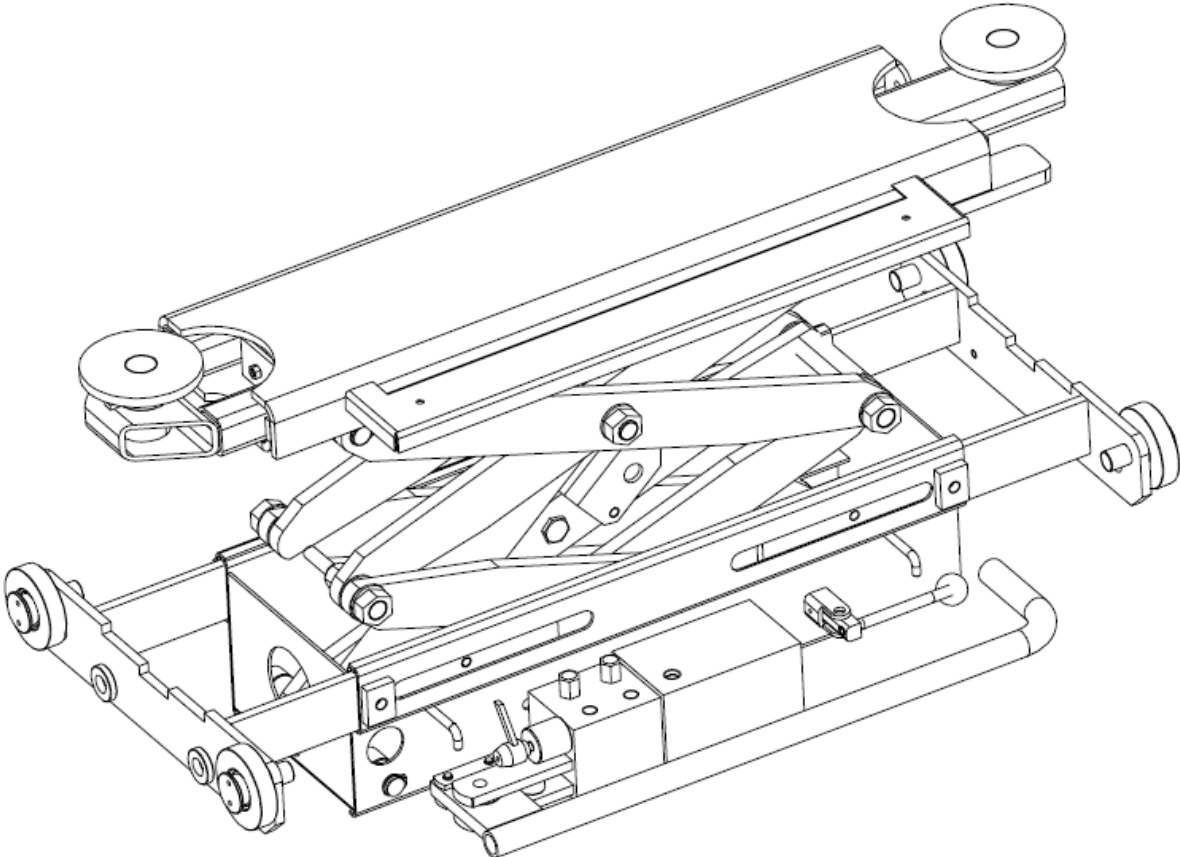


	6435S.52	6435S.48	6435S.46	6435A.52	6435S.48	6435S.46	6435B.52	6435B.48	6435B.46
L1	2800	2800	2650	2800	2800	2650	2800	2800	2650
L2	4780	4380	4140	4780	1380	4140	4780	4380	4140

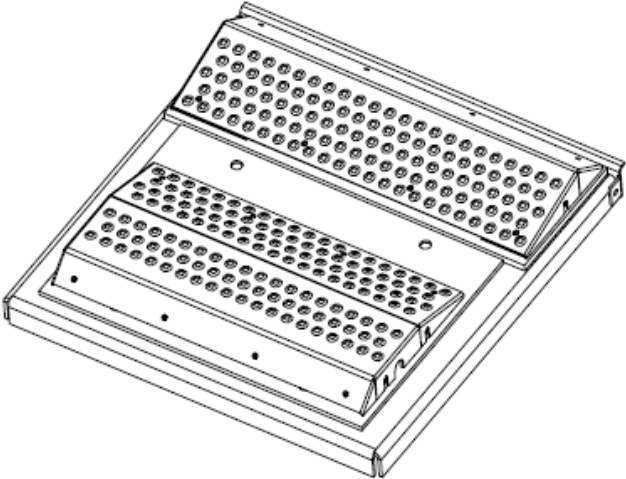
WARNING: THE WIRING MUST COMPLY WITH LOCAL CODE. HAVE A CERTIFIED ELECTRICIAN MAKE THE ELECTRICAL HOOK UP TO THE POWER UNIT.

OPTIONAL PARTS

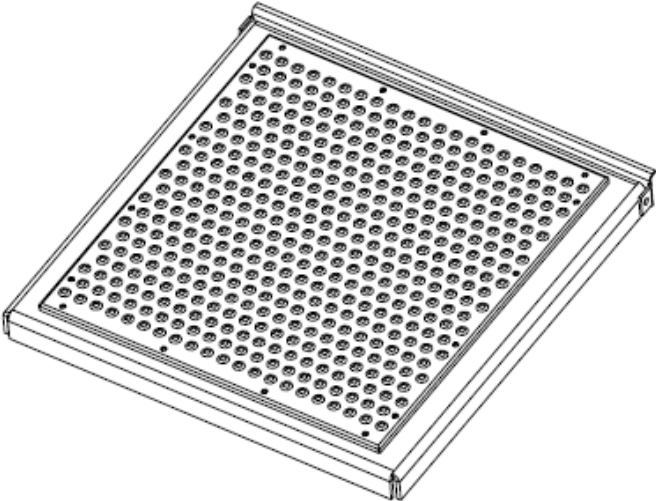
Jacking beam



Play detector



RIGHT



LEFT

PREVENTIVE MAINTENANCE SCHEDULE

The periodic Preventive Maintenance Schedule given is the suggested minimum requirements and minimum intervals; accumulated hours or monthly period, whichever ever comes sooner. Periodic maintenance is to be performed on a daily, weekly, monthly, and yearly basis as given in the following paragraphs.

1. DAILY PRE-OPERATION CHECK

The user should perform daily check. Daily check of safety latch system is very important – the discovery of device failure before needed could save you from expensive property damage, lost production time, serious personal injury, even death.

- . Check safety lock audibly and visually while in operation
- . Check hydraulic connections, and hoses for leakage.
- . Check chain connections, wiring.
- . Check bolts, nut and screws and tighten.
- . Check the safety block

2. WEEKLY MAINTENANCE

- . Check the agility of the mobile parts.
- . Check the safety device as previously described.
- . Check hydraulic fluid level as follow: let the trolleys go up completely and in case they do not reach maximum height, add oil.
- . Check and tighten bolts, nuts and screws.

3. MONTHLY MAINTENANCE

- . Check the tightening of screws
- . Check the hydraulic system seal and tighten the loose unions, if necessary.
- . Check the greasing and wear condition of pins, rollers, bushes, of trolley structure as well as arms and relevant extensions, if necessary, replace the damaged parts by original spare parts.

4. YEARLY MAINTENANCE

- . Empty the tank and check the conditions of the hydraulic fluid.
- . Clear the oil filter.

If the above maintenance operations are carried out, there will be an advantage for the user, who will find the equipment in perfect condition each time he restarts work.

TROUBLE SHOOTING

1. MOTOR DOES NOT RUN
 - A. Breaker or fuse blown. – Replace it,
 - B. Motor thermal overload tripped –check voltage
 - C. Faulty wiring connections. -- Call electrician for checking.
 - D. Defective up button. – Call electrician for checking.

2. MOTOR RUNS BUT WILL NOT RAISE
 - A. Push the down handle and the up button for 10 seconds at the same time. Wash the hydraulic system.
 - B. Remove the single-way valve cover and wash the inside.
 - C. Oil level too low — oil level should be 5cm under the installing flange.

3. MOTOR HUMS AND WILL NOT RUN
 - A. Faulty wiring.—Call electrician for checking.
 - B. Bad capacitor.—Call electrician for checking.
 - C. Low voltage – Call electrician for checking
 - D. Lift overloaded

4. LIFT JERKS GOING UP AND DOWN
 - A. Add oil to grease the column inside
 - B. Too high temperature

5. OIL LEAKS
 - A. One end of the cylinder leaks—the seal is abrasion, change for a new one.
 - B. Hydraulic oil hose joints leak—tighten the joints or change for new one.

6. LIFT MAKES EXCESSIVE NOISE.
 - A. Leg of the lift is dry and requires grease.
 - B. Cylinder pulley assembly or cable pulley assembly is not moving smoothly.
 - C. May has excessive wear on pins or cylinder yoke.

Warning: The above are easy trouble shooting. If the above problems happen, you can solve them as the above methods or contact with the local dealer. We will help you upon your request.

INTRODUCTION

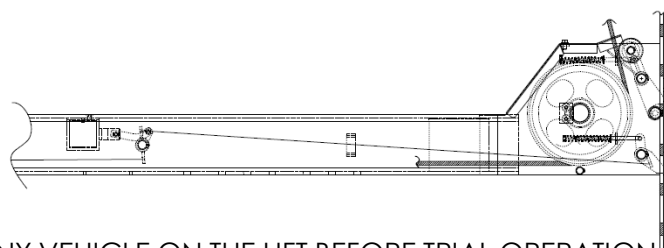
This guide has been made to supply the owner as well the user with the basic instructions for a correct use of the machine. Read this guide carefully before using the machine and follow the instructions given by this guide to grant the machine a correct function, efficiency and a long service life.

The four post lift is composed of column, crossbeam, runway, hydraulic cylinder, Power unit. The lift is operated by an electric motor controlling a hydraulic pump, which delivers the hydraulic fluid to cylinders inside the main platform for lifting four trolleys.

The 4-post lift is suitable for lifting vehicles having maximum weight as described

Any other use is to be considered improper and irrational and thus highly forbidden. The constructor cannot be held responsibilities for any damage or injuries caused by an improper use or by the non-observance of the following instructions:

SAFETY STRUCTURE



OPERATION

WARNING: DO NOT PLACE ANY VEHICLE ON THE LIFT BEFORE TRIAL OPERATION. CYCLE THE LIFT UP AND DOWN SEVERAL TIMES TO INSURE LATCHES CLICK TOGETHER AND AIR IS REMOVED FROM THE CYLINDERS.

BEFORE OPERATION

- a. Check all the pipelines and joints before use. The machine only can be used after there is not any leakage.
- b. The lift, if its safety device malfunctions, shall not be used.
- c. The machine shall not lift or lower an automobile if the center of gravity of automobile is not within the supporting range of the supporting device. Otherwise, the manufacturer will not bear any responsibility for the consequence resulted from the operation above mentioned.
- d. The staff or operators shall be in a safe position when the machine lift or lower.
- e. When the lift with vehicle on reaches a desired height, first of all, the main switch must be turned off before the automobile is repaired so as to prevent non-operator or unauthorized person from pressing the start switch.
- f. Always lock the lift before going under the vehicle. Never allow anyone to go under the lift when raising or lowering.

INSTRUCTIONS FOR USE

RAISING THE LIFT

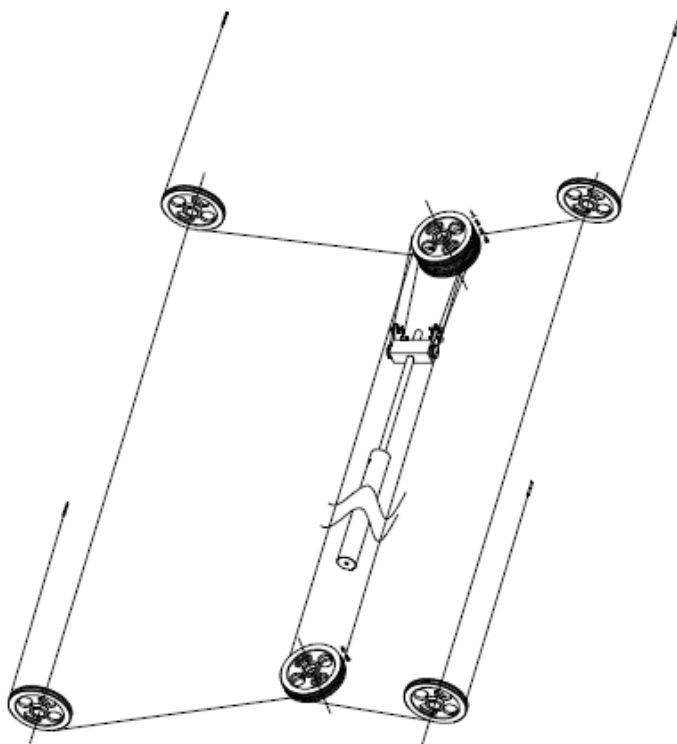
1. Make sure that you have read the operation manual before operation.
2. Position the vehicle in the center of the runway.
3. Push the up button on the control box gently until the runway lifts stable.
4. Continue to lift the runway and recheck the crossbeam position.
5. When the lift reaches a desired height, push the safety lock button to lock the platform.
6. Recheck the security and then can carry out the maintenance work..

LOWERING THE LIFT

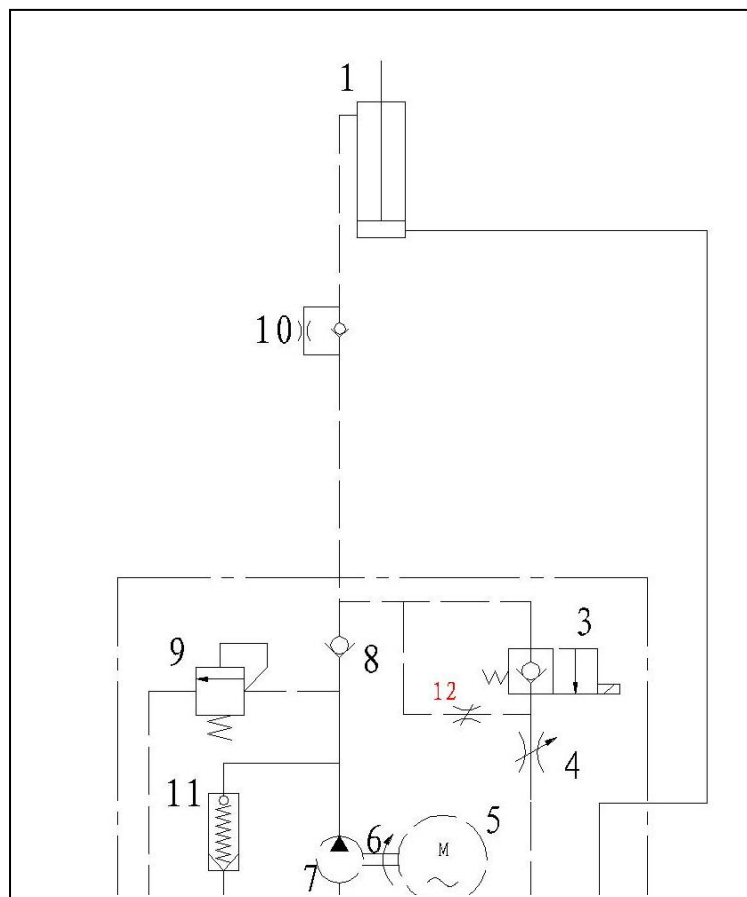
1. Press the "down" button to lower the lift , the lift will alarm when the lift is 30CM above the ground.

2. Press the "safety lock" button to release the lock and the same time lower the lift.

ANNEX 1-WIRE ROPE CONNECTION

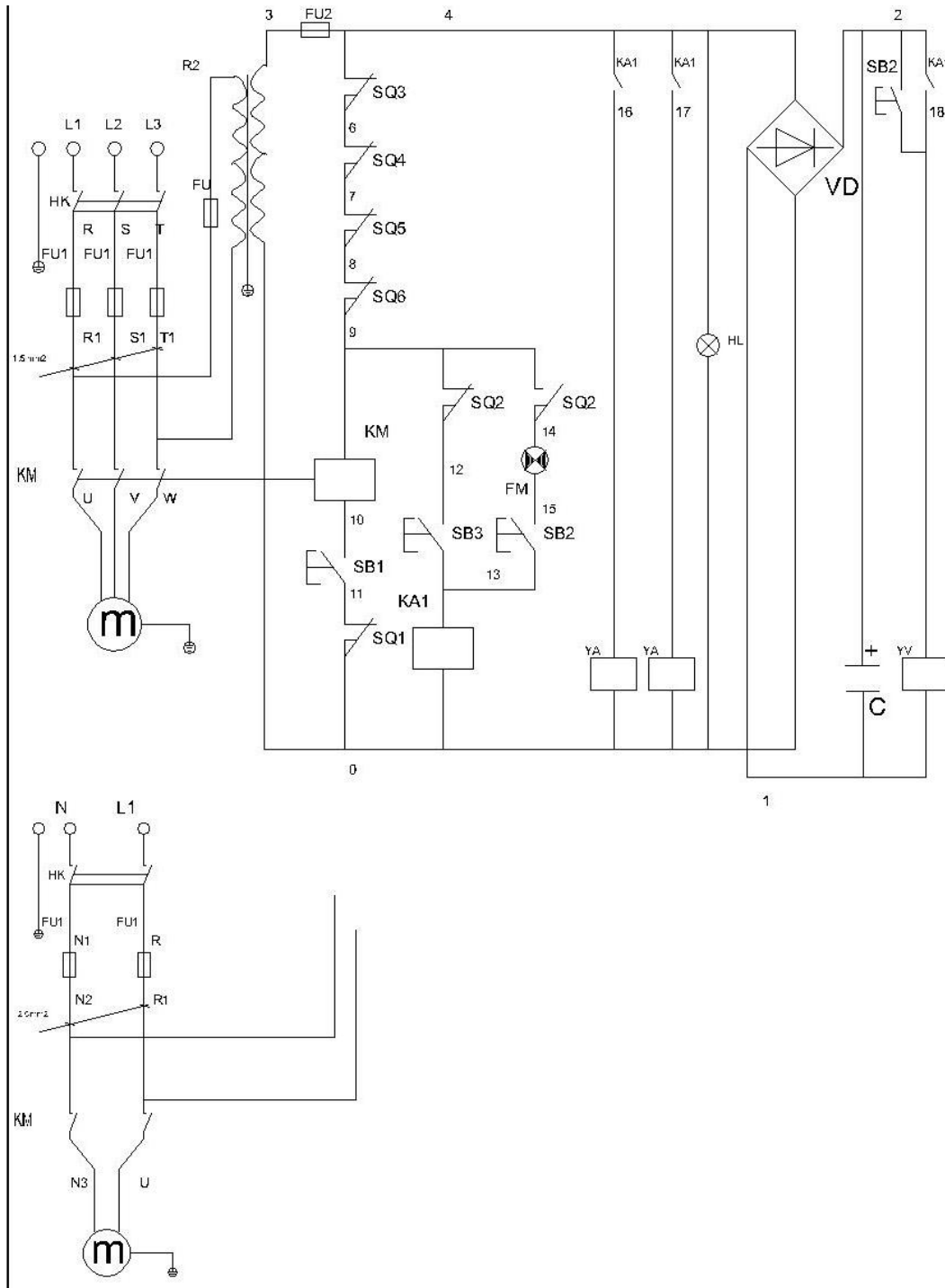


ANNEX 2-HYDRAULIC CONNECTION



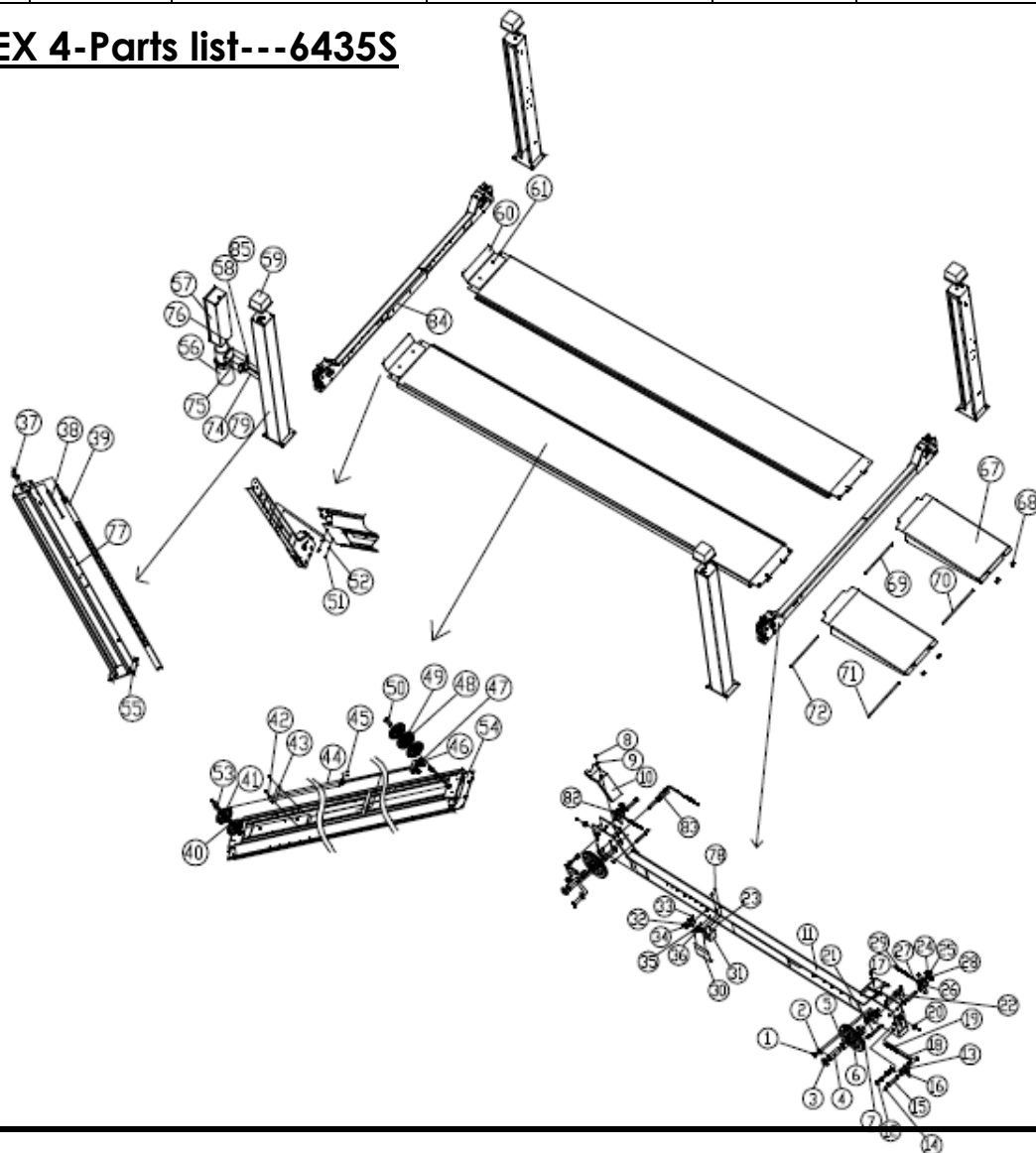
- 1. main cylinder
- 3 electrical unloading valve
- 4.throttle valve
- 5.motor
- 6.connector
- 7.gear pump
- 8.single way valve
- 9.overflow valve
- 10.anti-surge valve
- 11.cushion valve
- 12.EMG. unloading valve

ANNEX 3-WIRING DIAGRAM



S/N	CODE	DESCRIPTION	SPEC	Q'TY	REMARK
1	VD	Rectifier	KBPC5A-35A	1	
2	VV	Electromagnetic valve	DC24V	1	
3	YA	Electromagnet	MQZ2-18/AC24V	2	
4	C	Capacitor	4700UF-50V	1	
5	JBK	Transformer	JBK3-160VA 380V-AV24V	1	JBK3-160VA 220V-AV24V
6	HL	Power lamp	AD17-22G	1	
7	SQ1-6	Limit switch	8104	6	
8	KM	AC contactor	CJX2-1210/AC24	1	
9	HK	Power switch	LW26GS-20/04	1	
10	FU1	Fuse	16A/32A	3/2	
11	FU	Fuse	5A	1	
12	FU2	Fuse	10A	1	
13	SB1 SB3	Button	Y090	2	
14	KA	Relay	LY4NJ/AC24	1	
15	FM	Buzzer	AD17-22SM/DC24V	1	
16	M	Motor	220V/380V 2.2KW	1	
17	SB2	Button	Y090-20BN	1	

ANNEX 4-Parts list---6435S



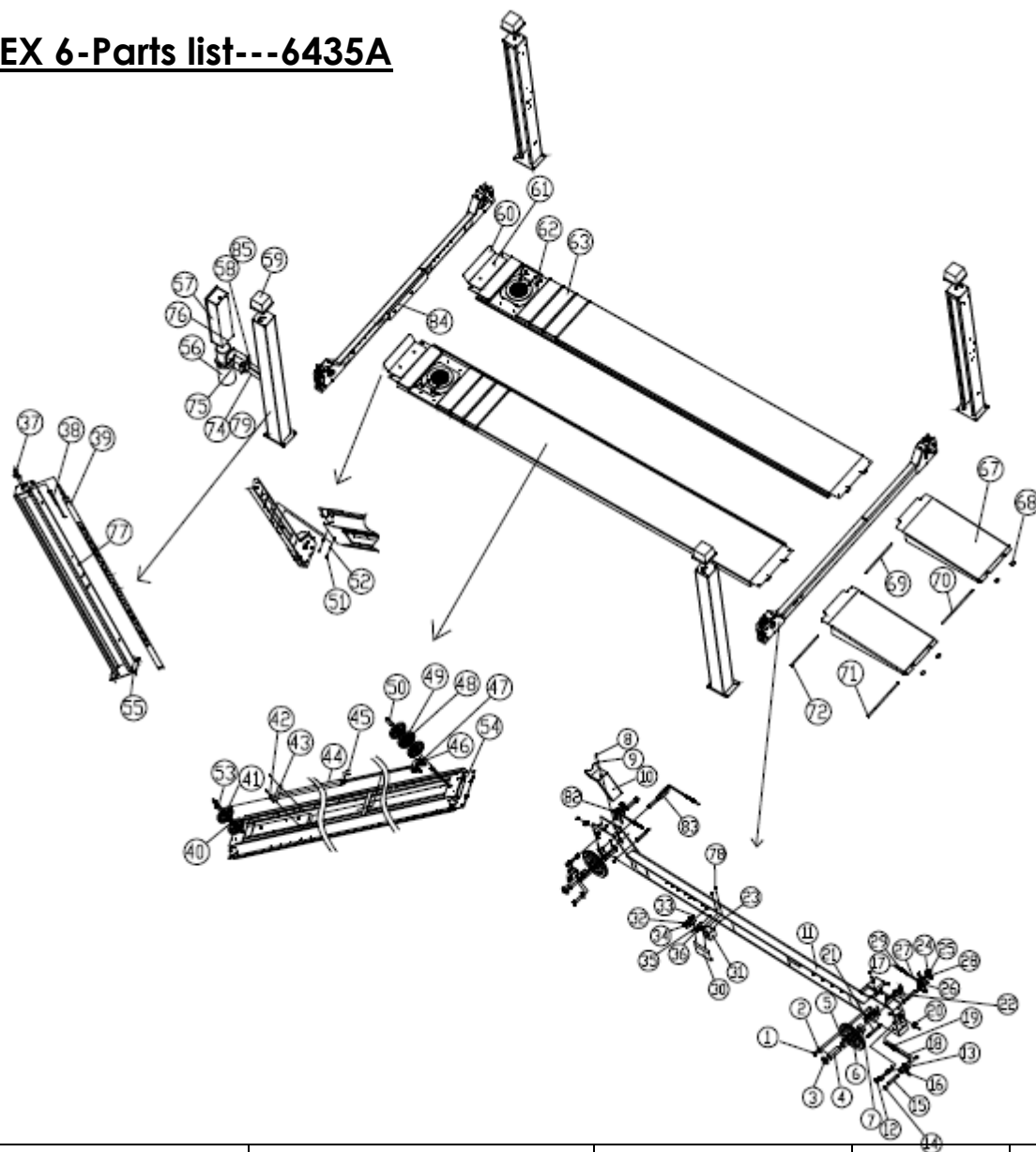
Vehicle lift specialist

ITEMS	MATERIAL NO.	DESCRIPTION	DRAWING#	Q'TY	REMARK
1	241002	Screw	M8*12	16	
2	261042	Shaft block	6435N-A3-B13	6	
3	262007	Casing A	6435N-A3-B1	4	
4	261024	Sliding wheel shaft A	6435N-A3-B4	4	
5	220013	Oil less bearing	4040	4	
6	261004	Sliding wheel A	6435N-A3-B3	4	
7	262008	Casing B	6435N-A3-B2	4	
8	212046	Bolt	M8*15	20	
9	218006	Washer	M8	42	
10	428021	Cover protector	6435N-A2-B5	4	
11	628002	Crossbeam A	6435N-A2-B5	1	
12	219002	Circlip for shaft	M25	8	
13	261020	Shaft 2	6435N-A3-B11	4	
14	219006	Circlip for shaft	M22	18	
15	261019	Shaft 1	6435N-A3-B10	8	
16	261055	Safety block B2	6435N-A3-B17	2	
17	216014	Self-locking nut	M8		
18	261060	Adjusting rod A	6435N-A3-B8	4	
19	261029	Spring	6435N-A3-B32	4	
20	262005	Side sling block	6435N-A2-B4	4	
21	261021	Shaft 3	6435N-A3-B12	8	
22	262004	Sliding block	6435N-A2-B4	4	
23	224035	Screw	M4*10	4	
24	261026	Sliding wheel	6435N-A3-B5	4	
25	219010	Circlip for shaft	M16	12	
26	261049	Safety block A2	6435N-A3-B16	2	
27	261041	Adjusting rod B	6435N-A3-B9	4	
28	214008	Screw	M6*16	4	
29	261006	Spring	6435N-A3-B22	4	
30	428036	Electromagnet cover	6435N-A3-B28	2	
31	261017	Electromagnet		2	
32	215019	Screw	M6*20	2	
33	216003	Nut	M6	7	
34	261057	Middle casing A	6435N-A3-B14	1	
35	212011	Bolt	M6*30	2	
36	428034	Electromagnet connector	6435N-A3-B24	2	
37	216009	Nut	M20	8	
38	261048	Safety latch	6435N-A1-B2	4	
39	254036	Wire rope	6435N-A3-B29	2	
40	220011	Oil less bearing	4025	4	
41	261005	Sliding wheel B	6435N-A3-B29	4	

Vehicle lift specialist

42	221026	Air pipe connector	NPT1/4 & M8	1	
43	428075	Cylinder supporter	6435N-A15	1	
44	261007	Oil cylinder	6435N-A3-B19	1	
45	212018	Screw	M8*20	2	
46	628308	Wire rope connector	6435N-A3-B20	1	
47	261068	Wire rope lock	For M10 wire rope	4	
48	261003	Sliding wheel C	6435N-A3-B26	1	
49	220012	Oil less bearing	4030	1	
50	261023	Sliding wheel shaft B	6435N-A3-B18	1	
51	212004	Bolt	M12*25	12	
52	218005	Spring washer	M12	8	
53	261059	Sliding wheel shaft C	6435N-A3-B31	1	
54	628004	Platform A	6435N-A4	1	
55	224003	Expansion bolt	M18*160	16	
56		Power unit			
57	261015	Control box			
58	428070	Power unit installation board	6435N-A13	1	
59	261014	Toper cover	6435N-A11	4	
60	428068	Plate B	6435N-A10	2	
61	216006	Nut	M12	4	
67	628008	Plate	6435N-A8-B1	2	
68	253025	Sliding wheel	MR30-A22-B5	4	
69	428055	Shaft	6435N-A8-B2	2	
70	428066	Sliding wheel shaft	6435N-A8-B3	2	
71	219012	Circlip for shaft	M15	4	
72	224065	Pin	M3*40	4	
74	212018	Bolt	M8*20	4	
75	212008	Bolt	M10*30	4	
76	216005	Nut	M10	4	
77	264018	Oil hose bushing	M20	1	
78	214008	Screw	M6*12	4	
79	216004	Nut	M8	4	
82	261054	Safety block B1	6435N-A3-B7	2	
83	261050	Safety block A1	6435N-A3-B6	2	
84	261056	Middle casing B	6435N-A3-B23	1	

ANNEX 6-Parts list---6435A



ITEMS	MATERIAL NO.	DESCRIPTION	DRAWING#	Q'TY	REMARK
1	241002	Screw	M8*12	16	
2	261042	Shaft block	6435N-A3-B13	6	
3	262007	Casing A	6435N-A3-B1	4	
4	261024	Sliding wheel shaft A	6435N-A3-B4	4	
5	220013	Oil less bearing	4040	4	
6	261004	Sliding wheel A	6435N-A3-B3	4	
7	262008	Casing B	6435N-A3-B2	4	
8	212046	Bolt	M8*15	20	
9	218006	Washer	M8	42	
10	428021	Cover protector	6435N-A2-B5	4	
11	628002	Crossbeam A	6435N-A2-B5	1	

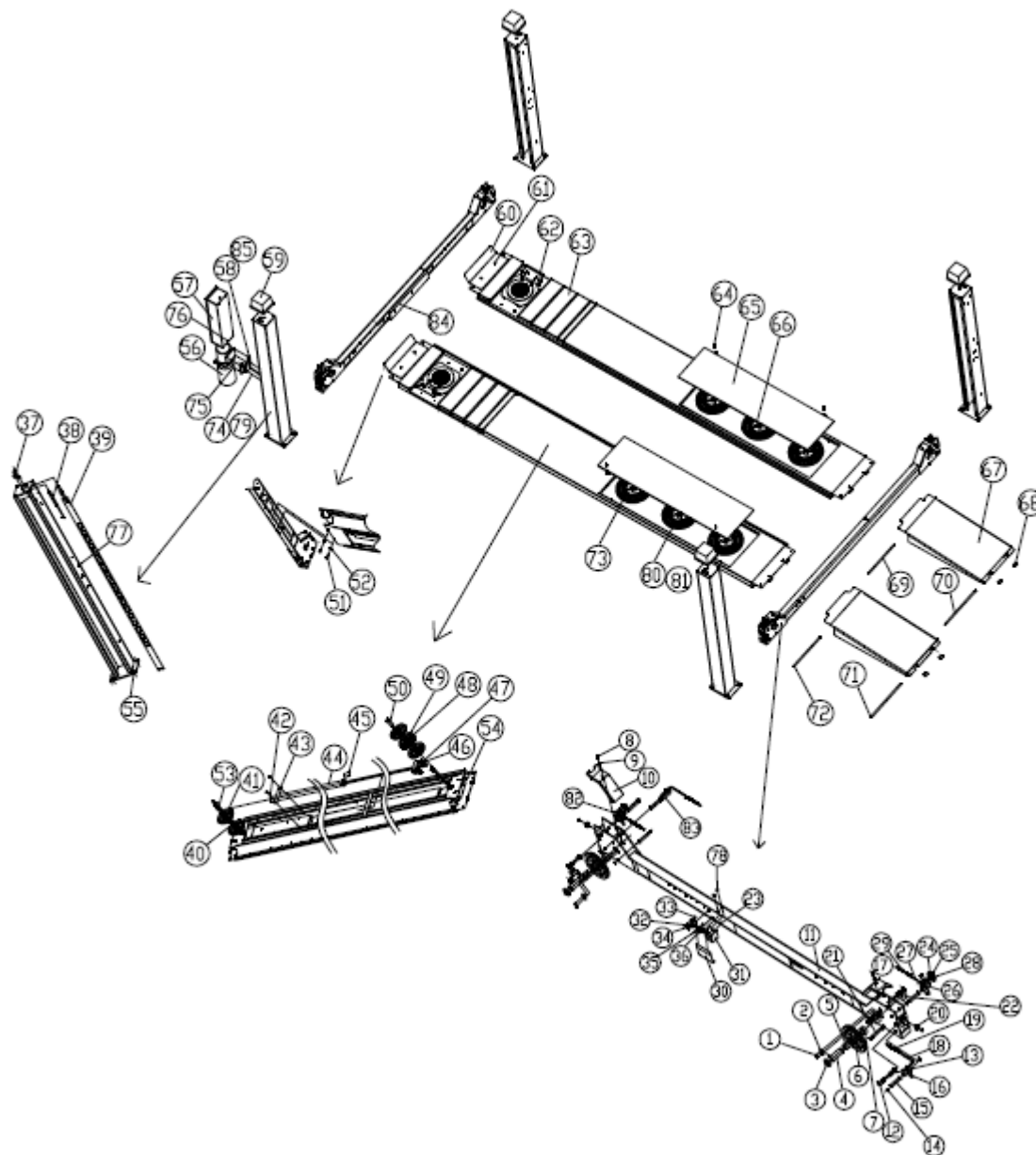
Vehicle lift specialist

12	219002	Circlip for shaft	M25	8	
13	261020	Shaft 2	6435N-A3-B11	4	
14	219006	Circlip for shaft	M22	18	
15	261019	Shaft 1	6435N-A3-B10	8	
16	261055	Safety block B2	6435N-A3-B17	2	
17	216014	Self-locking nut	M8		
18	261060	Adjusting rod A	6435N-A3-B8	4	
19	261029	Spring	6435N-A3-B32	4	
20	262005	Side sling block	6435N-A2-B4	4	
21	261021	Shaft 3	6435N-A3-B12	8	
22	262004	Sliding block	6435N-A2-B4	4	
23	224035	Screw	M4*10	4	
24	261026	Sliding wheel	6435N-A3-B5	4	
25	219010	Circlip for shaft	M16	12	
26	261049	Safety block A2	6435N-A3-B16	2	
27	261041	Adjusting rod B	6435N-A3-B9	4	
28	214008	Screw	M6*16	4	
29	261006	Spring	6435N-A3-B22	4	
30	428036	Electromagnet cover	6435N-A3-B28	2	
31	261017	Electromagnet		2	
32	215019	Screw	M6*20	2	
33	216003	Nut	M6	7	
34	261057	Middle casing A	6435N-A3-B14	1	
35	212011	Bolt	M6*30	2	
36	428034	Electromagnet connector	6435N-A3-B24	2	
37	216009	Nut	M20	8	
38	261048	Safety latch	6435N-A1-B2	4	
39	254036	Wire rope	6435N-A3-B29	2	
40	220011	Oil less bearing	4025	4	
41	261005	Sliding wheel B	6435N-A3-B29	4	
42	221026	Air pipe connector	NPT1/4 & M8	1	
43	428075	Cylinder supporter	6435N-A15	1	
44	261007	Oil cylinder	6435N-A3-B19	1	
45	212018	Screw	M8*20	2	
46	628308	Wire rope connector	6435N-A3-B20	1	
47	261068	Wire rope lock	For M10 wire rope	4	
48	261003	Sliding wheel C	6435N-A3-B26	1	
49	220012	Oil less bearing	4030	1	
50	261023	Sliding wheel shaft B	6435N-A3-B18	1	
51	212004	Bolt	M12*25	12	
52	218005	Spring washer	M12	8	
53	261059	Sliding wheel shaft C	6435N-A3-B31	1	
54	628004	Platform A	6435N-A4	1	
55	224003	Expansion bolt	M18*160	16	

Vehicle lift specialist

56		Power unit			
57	261015	Control box			
58	428070	Power unit installation board	6435N-A13	1	
59	261014	Topper cover	6435N-A11	4	
60	428068	Plate B	6435N-A10	2	
61	216006	Nut	M12	4	
62		Turntable	380*380	2	
63	628310	Box	6435N-A18	6	
67	628008	Plate	6435N-A8-B1	2	
68	253025	Sliding wheel	MR30-A22-B5	4	
69	428055	Shaft	6435N-A8-B2	2	
70	428066	Sliding wheel shaft	6435N-A8-B3	2	
71	219012	Circlip for shaft	M15	4	
72	224065	Pin	M3*40	4	
74	212018	Bolt	M8*20	4	
75	212008	Bolt	M10*30	4	
76	216005	Nut	M10	4	
77	264018	Oil hose bushing	M20	1	
78	214008	Screw	M6*12	4	
79	216004	Nut	M8	4	
82	261054	Safety block B1	6435N-A3-B7	2	
83	261050	Safety block A1	6435N-A3-B6	2	
84	261056	Middle casing B	6435N-A3-B23	1	

ANNEX 7-Parts list---6435B



ITEMS	MATERIAL NO.	DESCRIPTION	DRAWING#	Q'TY	REMARK
1	241002	Screw	M8*12	16	
2	261042	Shaft block	6435N-A3-B13	6	
3	262007	Casing A	6435N-A3-B1	4	
4	261024	Sliding wheel shaft A	6435N-A3-B4	4	
5	220013	Oil less bearing	4040	4	
6	261004	Sliding wheel A	6435N-A3-B3	4	
7	262008	Casing B	6435N-A3-B2	4	
8	212046	Bolt	M8*15	20	
9	218006	Washer	M8	42	
10	428021	Cover protector	6435N-A2-B5	4	

Vehicle lift specialist

11	628002	Crossbeam A	6435N-A2-B5	1	
12	219002	Circlip for shaft	M25	8	
13	261020	Shaft 2	6435N-A3-B11	4	
14	219006	Circlip for shaft	M22	18	
15	261019	Shaft 1	6435N-A3-B10	8	
16	261055	Safety block B2	6435N-A3-B17	2	
17	216014	Self-locking nut	M8		
18	261060	Adjusting rod A	6435N-A3-B8	4	
19	261029	Spring	6435N-A3-B32	4	
20	262005	Side sling block	6435N-A2-B4	4	
21	261021	Shaft 3	6435N-A3-B12	8	
22	262004	Sliding block	6435N-A2-B4	4	
23	224035	Screw	M4*10	4	
24	261026	Sliding wheel	6435N-A3-B5	4	
25	219010	Circlip for shaft	M16	12	
26	261049	Safety block A2	6435N-A3-B16	2	
27	261041	Adjusting rod B	6435N-A3-B9	4	
28	214008	Screw	M6*16	4	
29	261006	Spring	6435N-A3-B22	4	
30	428036	Electromagnet cover	6435N-A3-B28	2	
31	261017	Electromagnet		2	
32	215019	Screw	M6*20	2	
33	216003	Nut	M6	7	
34	261057	Middle casing A	6435N-A3-B14	1	
35	212011	Bolt	M6*30	2	
36	428034	Electromagnet connector	6435N-A3-B24	2	
37	216009	Nut	M20	8	
38	261048	Safety latch	6435N-A1-B2	4	
39	254036	Wire rope	6435N-A3-B29	2	
40	220011	Oil less bearing	4025	4	
41	261005	Sliding wheel B	6435N-A3-B29	4	
42	221026	Air pipe connector	NPT1/4 & M8	1	
43	428075	Cylinder supporter	6435N-A15	1	
44	261007	Oil cylinder	6435N-A3-B19	1	
45	212018	Screw	M8*20	2	
46	628308	Wire rope connector	6435N-A3-B20	1	
47	261068	Wire rope lock	For M10 wire rope	4	
48	261003	Sliding wheel C	6435N-A3-B26	1	
49	220012	Oil less bearing	4030	1	
50	261023	Sliding wheel shaft B	6435N-A3-B18	1	
51	212004	Bolt	M12*25	12	
52	218005	Spring washer	M12	8	
53	261059	Sliding wheel shaft C	6435N-A3-B31	1	
54	628004	Platform A	6435N-A4	1	

Vehicle lift specialist

55	224003	Expansion bolt	M18*160	16	
56		Power unit			
57	261015	Control box			
58	428070	Power unit installation board	6435N-A13	1	
59	261014	Toper cover	6435N-A11	4	
60	428068	Plate B	6435N-A10	2	
61	216006	Nut	M12	4	
62		Turntable	380*380	2	
63	628310	Box	6435N-A18	6	
64	261077	Pin	6435N-A22	4	
65	628309	Side sliding components	6435N-A17	2	
66	262011	Pearl seat	6435N-A20	6	
67	628008	Plate	6435N-A8-B1	2	
68	253025	Sliding wheel	MR30-A22-B5	4	
69	428055	Shaft	6435N-A8-B2	2	
70	428066	Sliding wheel shaft	6435N-A8-B3	2	
71	219012	Circlip for shaft	M15	4	
72	224065	Pin	M3*40	4	
73	262010	Pearl	6435N-A21	240	
74	212018	Bolt	M8*20	4	
75	212008	Bolt	M10*30	4	
76	216005	Nut	M10	4	
77	264018	Oil hose bushing	M20	1	
78	214008	Screw	M6*12	4	
79	216004	Nut	M8	4	
80	214014	Screw	M10*25	6	
81	216030	Self-locking nut	M10	6	
82	261054	Safety block B1	6435N-A3-B7	2	
83	261050	Safety block A1	6435N-A3-B6	2	
84	261056	Middle casing B	6435N-A3-B23	1	