



Ever-Eternal

EE-6253E/6254E

Floor Plate Two Post Lift Electrical Release
Lifting Capacity: 3200KG/4000 KG

**INSTALLATION, OPERATION
AND MAINTENANCE MANUAL**



Read this entire manual carefully and completely before installation or operation of the lift.

INDEX

1. Important safety instructions.....	3~4
1.1 Important notices	
1.2 Qualified personnel	
1.3 Danger notices	
1.4 Warning signs	
1.5 Sound level	
1.6 Training	
2. Overview of the lift.....	5~5
2.1 General descriptions	
2.2 Technical data	
2.3 Construction of the lift	
3. Installation instructions.....	6~10
3.1 Preparations before installation	
3.1.1 Tools and equipments needed	
3.1.2 A list for parts checking	
3.1.3 Ground conditions	
3.2 Precautions for installation	
3.3 Installation	
3.4 Items to be checked after installation	
4. Operation instructions.....	10~13
4.1 Precautions	
4.2 Descriptions of control box	
4.3 Flow chart for operation	
4.4 Operating instructions	
4.5 Emergency lowering in case of no power	
5. Trouble shooting.....	14
6. Maintenance.....	15
7. Annex.....	16~29
Annex1, Packing list of the whole lift	
Annex2, Overall diagram	
Annex3, Diagram for ground fixing	
Annex4, Hydraulic working system	
Annex5, Wiring diagram	
Annex6, Separate diagrams for the lift	
Annex7, Spare parts list	
Annex8, Size and weight requirement for vehicles	

1. Important safety instructions

1.1 Important notices

Ever-Eternal will offer one-year's quality warranty for the whole machine , during which any quality problem will be properly solved to the user's satisfaction. However, we will not take any responsibility for whatever bad consequence resulted from improper installation and operation, overload running or unqualified ground condition.

This 2-posts lift is specially designed for lifting motor vehicles that weighs within its outmost lifting capacity. Users are not allowed to use it for any other purposes. Otherwise, we, as well as our sales agency, will not bear any responsibility for accidents or damages of the lift. Make sure to pay careful attention to the label of the lifting capacity attached on the lift and never try to lift cars with its weight beyond.

Read this manual carefully before operating the machine so as to avoid economic loss or personnel casualty incurred by wrong operation.

Without our professional advice, users are not permitted to make any modification to the control unit or whatever mechanical unit.

1.2 Qualified personnel

1.2.1 Only these qualified staff, who have been properly trained, can operate the lift.

1.2.2 Electrical connection must be done by a competent electrician.

1.2.3 People who are not concerned are not allowed in the lifting area.

1.3 Danger notices

1.3.1 Do not install the lift on any asphalt surface.

1.3.2 Read and understand all safety warnings before operating the lift.

1.3.3 The lift, if is not specially designed upon customer's request, is not fit for outdoor use.

1.3.4 Keep hands and feet away from any moving parts. Keep feet clear of the lift when lowering.

1.3.5 Only these qualified people, who have been properly trained, can operate the lift.

1.3.6 Do not wear unfit clothes such as large clothes with flounces, tires, etc, which could be caught by moving parts of the lift.

1.3.7 To prevent evitable incidents, surrounding areas of the lift must be tidy and with nothing unconcerned.

1.3.8 The lift is simply designed to lift the entire body of vehicles, with its maximum weight within the lifting capacity.

1.3.9 Always insure the safety latches are engaged before any attempt to work near or under the vehicle.

1.3.10 Make sure to place the lifting pads to the positions as suggested by vehicle makers and when gradually lift the vehicle to the desired height, operators should be certain that the vehicle will not slant, roll-over or slide in lifting process.

1.3.11 Check at any time the parts of the lift to ensure the agility of moving parts and the performance of synchronization. Ensure regular maintenance and if anything abnormal occurs, stop using the lift immediately and contact our dealers for help.

1.3.12 Lower the lift to its lowest position and do remember to cut off the power source when service finishes.

1.3.13 Do not modify any parts of the lift without manufacturer's advice.





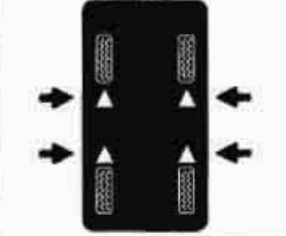







1.3.14 If the lift is going to be left unused for a long time, users are required to:

- a. Disconnect the power source;
- b. Empty the oil tank;
- c. Lubricate the moving parts with hydraulic oil.

Attention: For environment protection, please dispose the disused oil in a proper way.

1.4 Warning signs

All safety warning signs attached on the machine are for the purpose of drawing the user's attention to safety operation. The labels must be kept clean and need to be replaced when they are worn-out or have dropped. Read the explanations of the labels carefully and try to memorize them.

<p>▲ CAUTION ▲</p>  <p><i>Lift is only allowed to be used by trained operator.</i></p>	<p>▲ CAUTION ▲</p>  <p><i>Only authorized personnel allowed in lift area.</i></p>	 <p><i>Remain clear of lift when lowering or lifting vehicle.</i></p>	 <p><i>Clear area if vehicle is in danger of falling.</i></p>
<p>▲ CAUTION ▲</p>  <p><i>Lift vehicle at the manufacturer's points</i></p>	<p>▲ CAUTION ▲</p>  <p><i>Always use safety stands when removing/installing heavy components</i></p>	 <p><i>Locate the vehicle with center gravity right between two adapters.</i></p>	 <p><i>Keep feet away from adapter while lift lowering.</i></p>
<p>▲ CAUTION ▲</p>  <p><i>Use height extenders when necessary to ensure good contact.</i></p>	<p>▲ CAUTION ▲</p>  <p><i>Auxiliary adapters may reduce load capacity.</i></p>	 <p><i>Do not override self-closing lift controls</i></p>	 <p><i>Avoid excessive rocking of vehicle while on lift.</i></p>

1.5 Sound Level

The sound emitted from the lift should not exceed 75DB. For the sake of your health, we suggest putting a noise detector in your working area.

1.6 Training

Only these qualified people, who have been properly trained, can operate the lift. We are quite willing to provide professional training for the users when necessary.

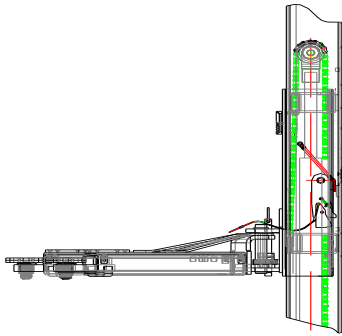
2. Overview of the lift

2.1 General descriptions

This floor plate two posts lift is composed of posts, carriages, lifting arms, cylinders and motor unit, etc.

The lift is driven by an electro-hydraulic system. The gear pump delivers hydraulic oil to oil cylinders and pushes upwards its piston. The piston drives the chain to raise the carriage and the lifting arms. During lifting process, the safety latch will automatically and firmly bite with the safety teeth block in the posts. Therefore, no slipping will happen in case the hydraulic system breaks down.

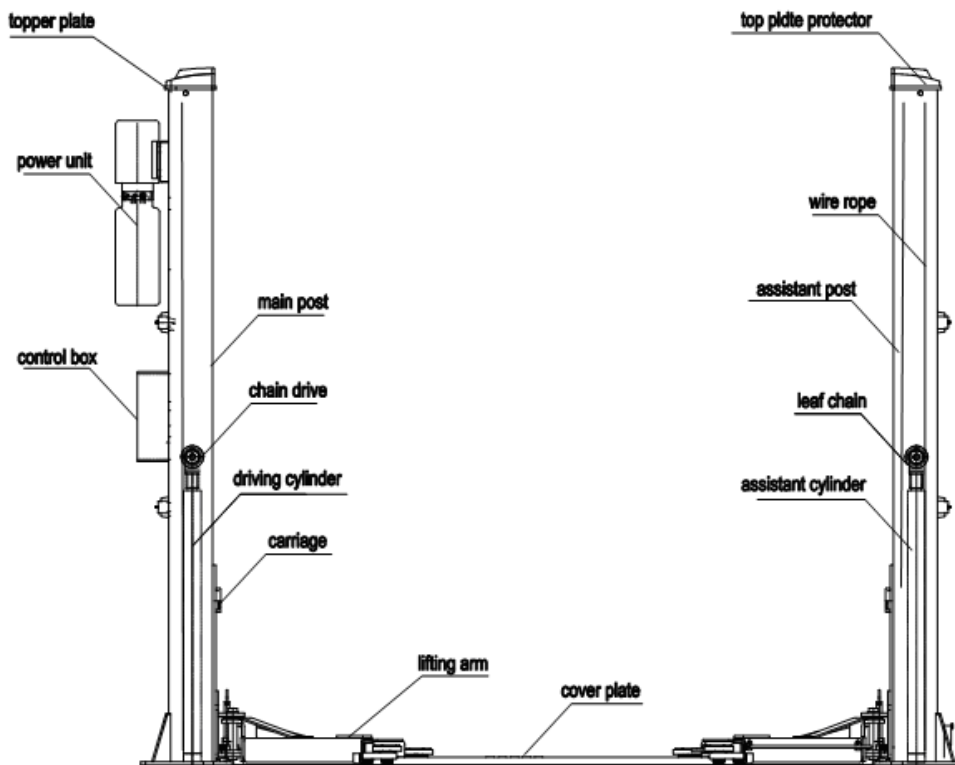
Safety structure:



2.2 Technical data

Model	Lifting capacity	Lifting time	Lifting height	Height	Width	Width between posts
EE-6253E	3200kg	50 Sec	1900mm	2904mm	3420mm	2830mm
EE-6254E	4000kg	50 Sec	1900mm	2904mm	3420mm	2830mm

2.3 Construction of the lift



3. Installation instructions

3.1 Preparations before installation

3.1.1 Tools and equipments needed

- ✓ Appropriate lifting equipment
- ✓ Anti-abrasion hydraulic oil.
- ✓ Rotary Hammer Drill with 3/4" drill bit.
- ✓ Chalk and tape measure, magnetic plump, 8 metersΦ15 level pipe.
- ✓ Sockets and open wrenches, a set of inside hex wrenches, cross and straight screw drivers.
- ✓ Hammer, 4pounds, sharp nose pliers, Φ17,Φ19,Φ22 socket spanners.

3.1.2 List for parts checking ---Annex 1 (Packing list)

Unfold the package and check if any parts missed as per Annex 1. Do not hesitate to contact us in case any parts missed, but if you do not contact us and insist installing upon the lack of some parts, Ever-eternal as well as our dealers will not bear any responsibility for this and will charge for any parts subsequently demanded by the buyer.

3.1.3 Ground conditions

The lift should be fixed on a smooth and solid concrete ground with its strength more than 3000psi, tolerance of flatness less than 5mm and minimum thickness of 200mm. In addition, newly built concrete ground must undergo more than 28days' cure and reinforcement.

3.2 Precautions for installation

3.2.1 Make sure the two posts stand paralleled and are vertical to the ground. No slanting.

3.2.2 Joints of oil hose and steel cable must be firmly connected in order to avoid the looseness of steel cable and leakage of oil hose.

3.2.3 All bolts should be firmly screwed up.

3.2.4 Do not place any vehicle on the lift in the case of trial running.

3.3 Installation



Step 1: Remove the packaging, take out the carton for accessories and cover plate.

Step 2 : Firstly, put something supporting between the two posts or suspend one of the posts by a crane and then remove the bolts on the package.

Attention : Please pay special attention not to let the post fall down for it may cause casualty or bring damages to the accessories fixed in the post.

Step 3 : When the first post has been taken away, place something supporter under the second post and then remove the bolts on the package.

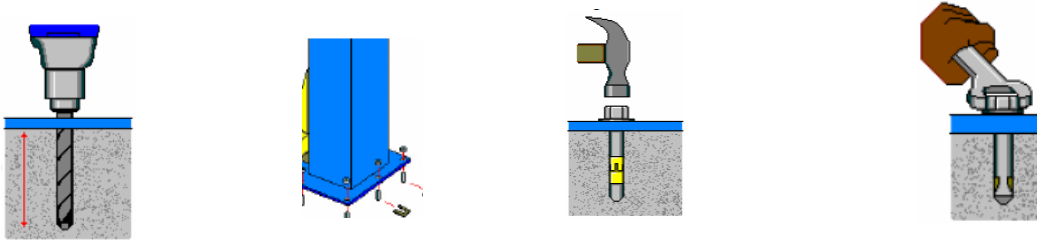
VEHICLE LIFT SPECIALIST

Step 4: Fix the standing position for the two posts and erect the main and assistant post, with a width of 2830mm between them.

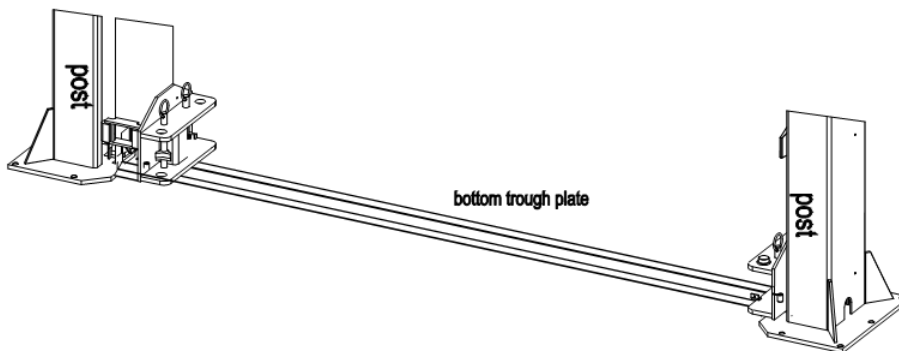
1. Unfold the package and decide on which post the power unit will be mounted.
2. Draw an outline of the base plate on the ground with chalk and ascertain the position for the post.

Step 5: Erect the posts, main post first and then the assistant post.

1. Drill anchor holes for each plug bolts on the ground with an electrical drill. Make sure to drill vertically.
2. After holes have been drilled, remove thoroughly the debris and dust in them and ascertain that the posts stay upon the circle previously drew by chalk.

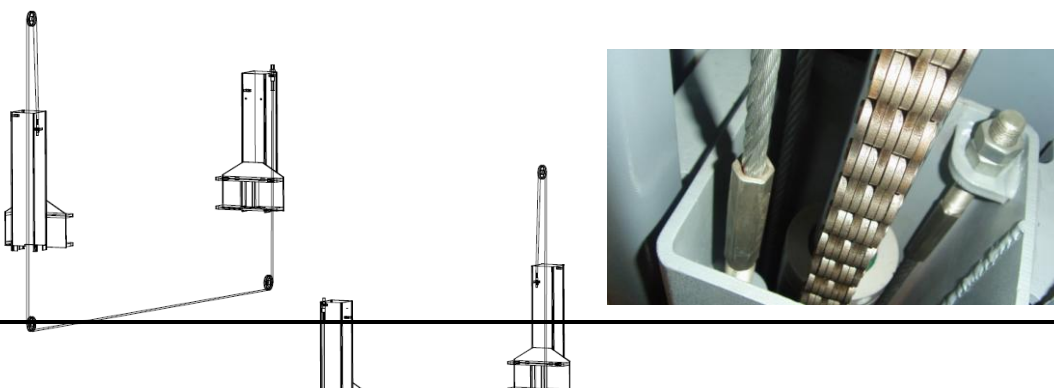


Step 6 : Install the bottom trough plate.



Step7: Connect the steel cable.

1. Raise carriages on both sides approximately 800mm above the ground.
2. Make sure that the safety locks on each column are fully engaged before attempting to route equalizer cables.
3. Carriages must be on the same height from the floor before proceeding.
4. Install according to the diagram of steel cable.
5. After the steel cable has been fixed, adjust and make rope at both sides be with the same tightness which could be judged by the sound emitted during lifting process. If currently installers can not ascertain, they can make adjustment in trial running process.
6. Grease the steel cable and chain after they have been fixed. (It is a must.)

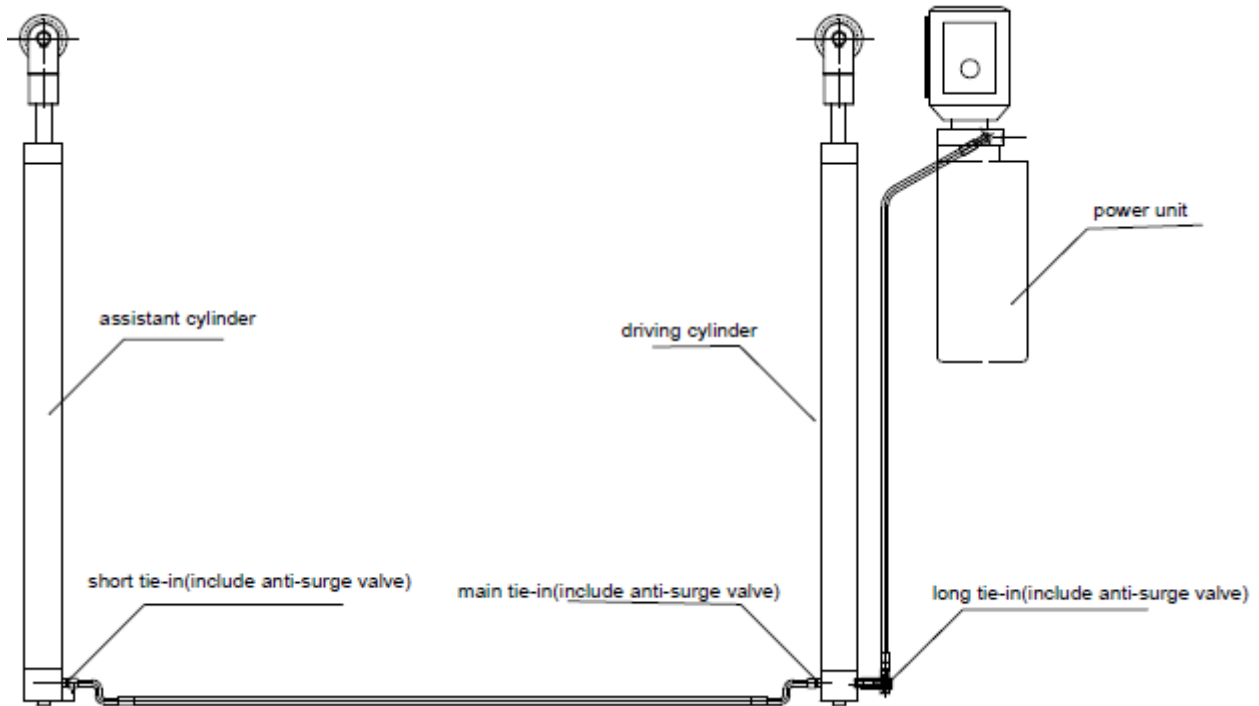


VEHICLE LIFT SPECIALIST

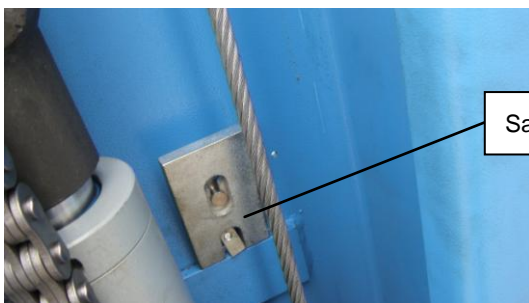
Bolt to adjust the tightness of the steel cable

Step8: Connect the oil hose.

Connect the oil hose as per the following diagram.



Step 9: Fix the four safety blocks, four pieces of electric magnet and their protectors.

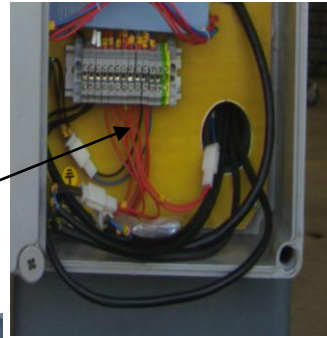
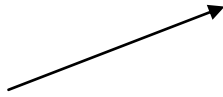


Step10: Mount the power unit and the control box.

1. Mount the power unit onto the main post.
2. Connect the power unit with the control box as per the wiring diagram.



VEHICLE LIFT SPECIALIST

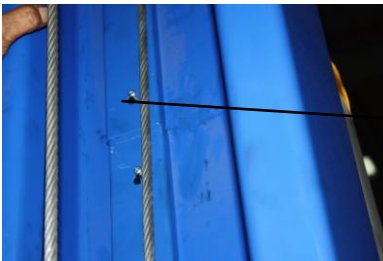


3. Connect the limit switch.



Limit switch

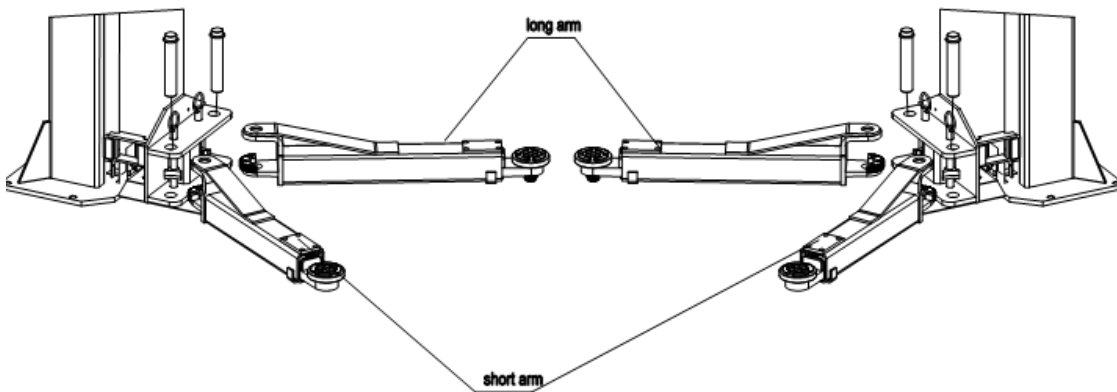
Step 11: Install the oil hose protector.



Oil hose protector

Step 12: Install the lifting arms.

Connect the lifting arm and the carriage by pins. Install the swing arms on the carriages and make sure the safety lock and safety teeth are well matched.



Step 13: Fill with hydraulic oil

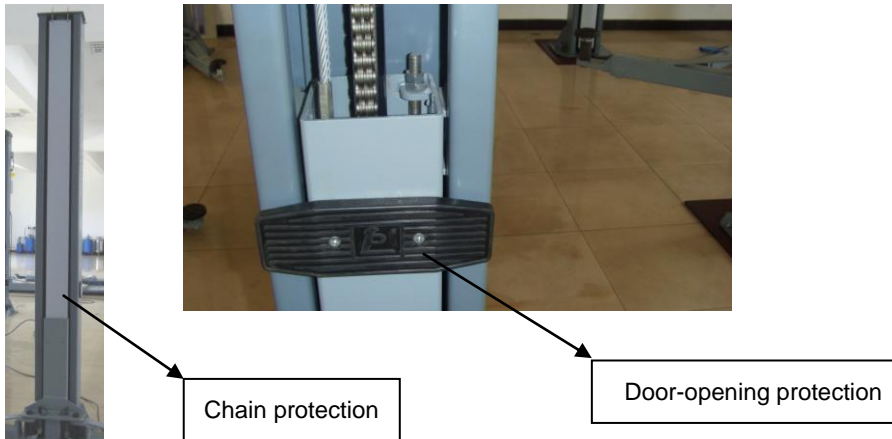
The volume of oil tank is 10L. To insure the lift work normally, the amount of oil in it should reach 4/5 of the tank's total volume. 32# anti-abrasion hydraulic oil for winter, 46# for summer.



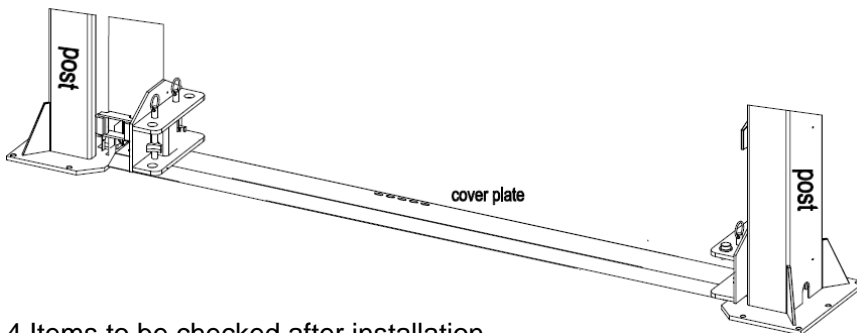
Step14: Trial running.

1. Do refer to the operation instructions in advance and keep in mind that no vehicle left on the lift in the process of trial running.
2. Check if all the connections are in good condition.

Step 15: Install the chain protection and door-opening protection.



Step16: Install the cover plate.



3.4 Items to be checked after installation.

S/N	Check items	YES	NO
1	Are the posts vertical to the floor?		
2	Are the two posts paralleled?		
3	Is the oil hose well connected?		
4	Is the steel cable well connected?		
5	Are all lifting arms well fixed?		
6	Are electrical connections right?		
7	Are the rest joints firmly screwed?		
8	Are all items need lubricating added with grease?		

4. Operation instructions

4.1 Precautions

- 4.1.1 Check all the joints of oil hose. Only when there is no leakage, the lift can start work.
- 4.1.2 The lift, if its safety device malfunctions, shall not be used.

VEHICLE LIFT SPECIALIST

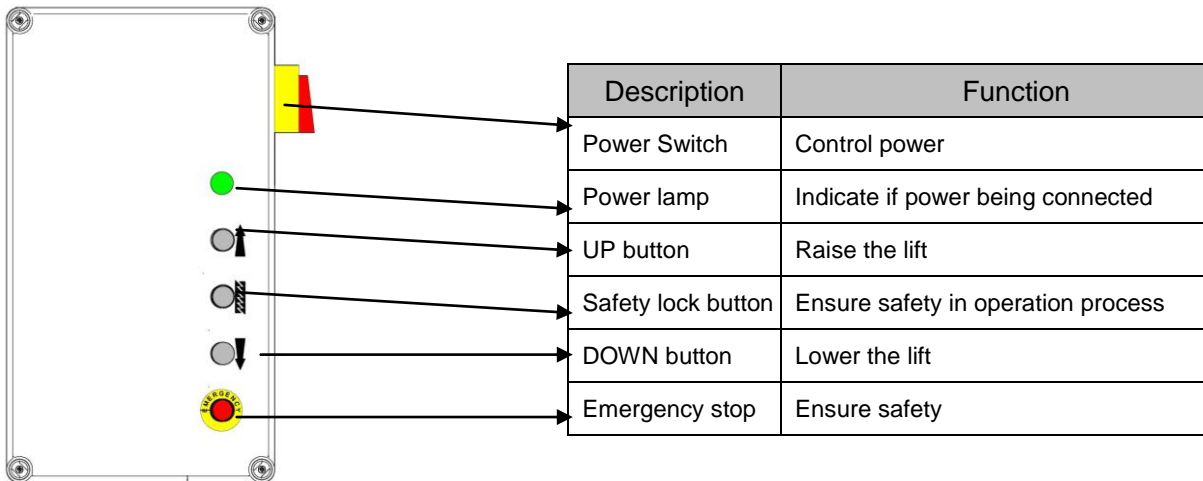
4.1.3 The machine shall not lift or lower an automobile if its center of gravity is not positioned midway of the swing arms. Otherwise, the Ever-Eternal as well as our dealers will not bear any responsibility for any consequence resulted thereby.

4.1.4 Operators and other personnel concerned should stand in a safety area during lifting and lowering process.

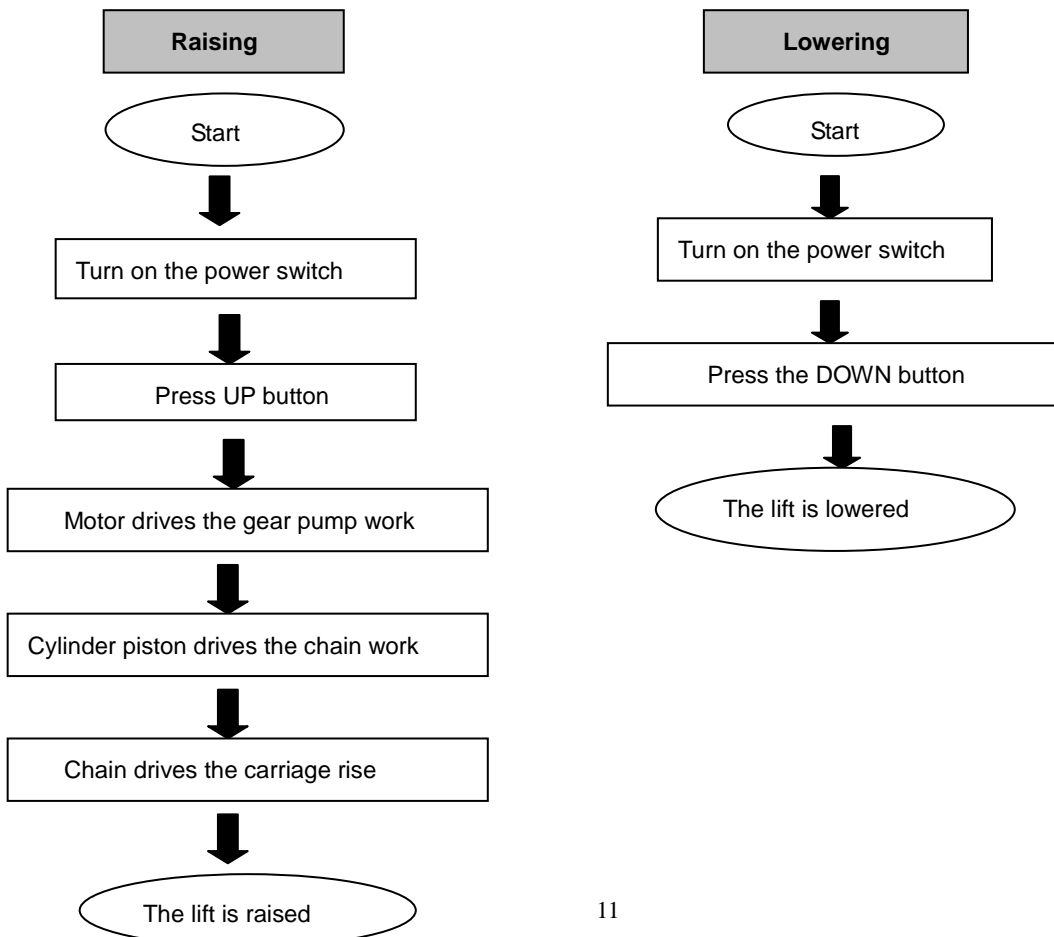
4.1.5 When lifting arms rise to the desired height, switch off the power at once to prevent any mal-operation done by unconcerned people.

4.1.6. Make sure the safety lock of the lift is engaged before start working under the vehicle and no people under the vehicle during lifting and lowering process.

4.2 Descriptions of control box



4.3 Flow chart for operation



4.4 Operation instructions

Raise the lift

1. Make sure that you have read and understood the operation manual before operation.
2. Park the vehicle between two posts.
3. Adjust the lifting arms until they reach the supporting positions of the vehicle and make sure the gravity of vehicle located in the center of four lifting arms.
4. Switch on and insure to operate as per requirements on the nameplate attached.
5. Press the "UP" button on the control box until pads of lifting arms touched the prop-position of vehicle.
6. Keep on raising the vehicle to let it have a bit clearance from the ground and check again its stability.
7. Raise the vehicle to the desired height, check it is safe or not, press the "Safety Lock" button on the control panel to have the safety lock engaged, turn off the power and then perform maintenance or repair work underneath.

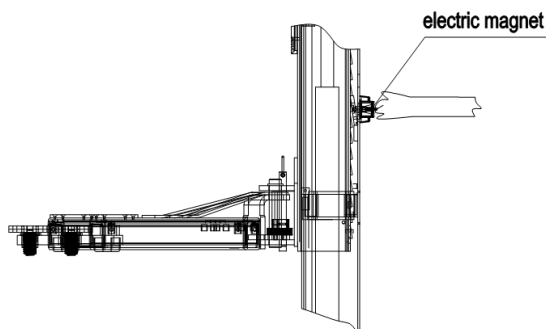
Lower the lift

1. Turn on the emergency stop button.
2. Press the DOWN button on the control box. Meanwhile the lifting arms automatically go upwards about 5CM which releases the safety lock and makes the electric magnet start working. The lift lowers accordingly.
3. After the swing arms lower to the lowest position, pull them to the horizontal position and clear up all the obstacles.
4. Drive the vehicle away.

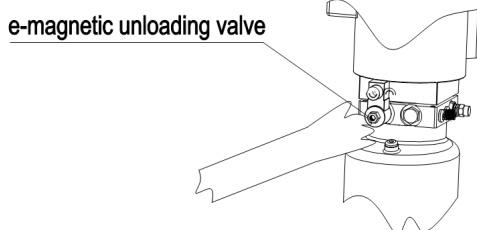
4.5 Emergency lowering in case of no power

The carriage is not engaged:

- a. Draw out at the same time the four pieces of electric magnet installed in the two posts.

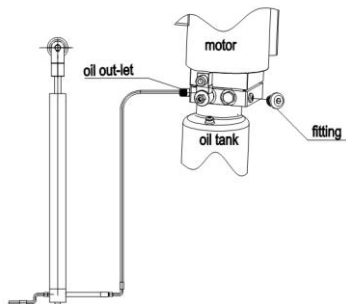


- b. Screw loose the e-magnetic unloading valve to lower the carriage.

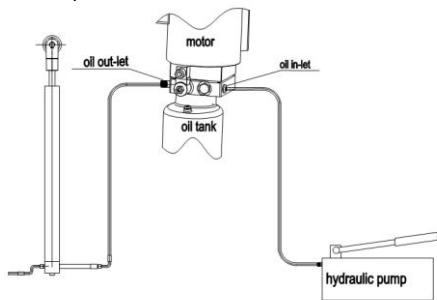


The carriage is engaged:

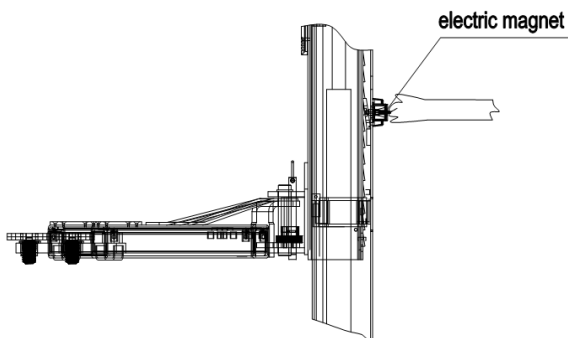
- a. Screw off the fitting (opposite to the oil out-let) to connect the manual hydraulic pump.



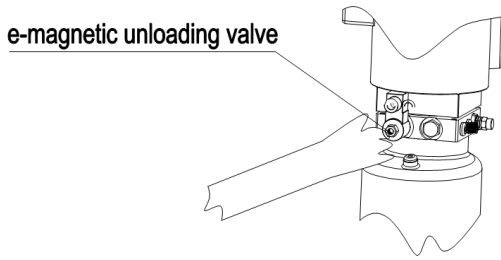
- b. Press the handle of the hydraulic pump to supply oil to the cylinder and release the lock.
(Note that this hydraulic pump is not an essential part of our lift and we will make extra charge if buyers want to buy one from us.)



- c. Draw out at the same time the four pieces of electric magnet installed in the two posts.



- d. Screw loose the e-magnetic unloading valve to lower the carriage.



5. Trouble Shooting

ATTENTION: If the trouble could not be fixed by yourself, please do not hesitate to contact us for help .We will offer our service at the earliest time we can. By the way, your troubles will be judged and solved much faster if you could provide us more details or pictures of the trouble.

TROUBLES	CAUSE	SOLUTION
Abnormal noise	Abrasion exists on insider surface of the posts.	Grease the inside of the post.
	Trash in the post.	Clear the trash
Motor does not run and will not rise	The wire connection is loose.	Check and make a good connection.
	The motor is blown.	Replace it.
	The limit switch is damaged or the wire connection is loose.	Connect it or adjust or replace the limit switch.
Motor runs but will not raise	The motor run reversely.	Check the wire connection.
	Overflow valve is loose or jammed.	Clean or adjust it.
	The gear pump is damaged.	Replace it.
	Oil level is too low.	Add oil.
	The oil hose became loose or dropped off.	Tighten it.
Carriages go down slowly after being raised	The cushion valve became loose or jammed.	Clean or adjusts it.
	The oil hose leaks.	Check or replace it.
	The oil cylinder is not tightened.	Replace the seal.
	The single valve leaks.	Clean or replace it.
	E-magnetic valve fails to work well.	Clean or replace it.
Raising too slow	Steel cable is loose or not with same tightness	Check and adjust the tightness.
	The oil filter is jammed.	Clean or replace it.
	Oil level is too low.	Add oil.
	The overflow valve is not adjusted to the right position.	Adjust it.
	The hydraulic oil is too hot (above 45°) .	Change the oil.
	The seal of the cylinder is abraded.	Replace the seal.
Lowering too slow	Inside surface of the posts is not well greased.	Add grease.
	The throttle valve jammed.	Clean or replace.
	The hydraulic oil is dirty.	Change the oil.
	The anti-surge valve jammed.	Clean it.
	The oil hose jammed.	Replace it.

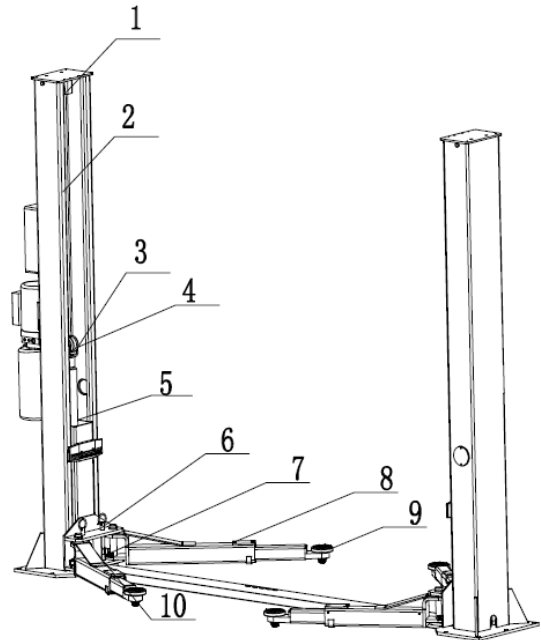
The steel cable is abraded	No grease when installation or out of lifetime	Replace it.
----------------------------	------------------------------------------------	-------------

6. Maintenance

Easy and low cost routine maintenance can ensure the lift work normally and safely. Following are requirements for routine maintenance. You may choose the frequency of routine maintenance by consulting your lift's working conditions and time.

THE FOLLOWING PARTS ARE NEEDED TO BE LUBRICATED

S/N	Description
1	Upper wheel
2	Steel cable
3	Chain wheel
4	Chain
5	Sliding block
6	Pin
7	Arm block
8	Lifting arm
9	Tray
10	Down wheel



6.1. Daily checking items before operation

The user must perform daily check. Daily check of safety latch system is very important – the discovery of device failure before action could save your time and prevent you from great loss, injury or casualty.

- Before operation, judge whether the safety latch is engaged by sound.
- Check whether oil hose well connected and whether it leaks or not.
- Check the connections of chain and steel cable and check the power unit.
- Check whether plug bolts firmly screwed.
- Check if safety teeth and safety block matched well or not.

6.2. Weekly checking items

- Check the flexibility of moving parts.
- Check the working conditions of safety parts.
- Check the amount of oil left in the oil tank. Oil is enough if the carriage can be raised to highest position. Otherwise, oil is insufficient.
- Check whether plug bolts firmly screwed.

6.3. Monthly checking items

- Check whether plug bolts firmly screwed.
- Check the tightness of the hydraulic system and screw firm the joints if it leaks.
- Check the lubrication and abrasion circumstance of axial pins, carriages, lifting arms and other related parts and replace in time with new ones if they failed to work well.
- Check the lubrication and abrasion circumstance of steel cable.

6.4. Yearly checking items

- Empty the oil tank and check the quality of hydraulic oil.
- Wash and clean the oil filter.

If users strictly follow the above maintenance requirements, the lift will keep in a good working condition and meanwhile accidents could be avoided to a large extent.

7. ANNEX

Annex 1, Packing List of the whole lift

S/N	Name	Drawing#/Size	Description	QTY
1	Posts	6254E-A1	Component	2
2	Carriage	6254EA2	Component	2
3	Hydraulic power unit(manual or electrical)	6254E-A7	Component	1 left and 1 right
4	Assistant cylinder	6254E-A8	Component	1 left and 1 right
5	Driving cylinder	6254E-A30-B1	Component	1
6	Electrical system	6254E-A5	Component	1
7	Carton for electrical parts			
8	Carton for magnetic parts			
9	Steel cable L=8785mm	6254-A6	Component	1
10	Long arm	6254EA7	Component	1
11	Short arm	6254E-A8	Component	1
12	Cover plate	6254E-A10	Welding piece	1
13	Bottom trough plate	6254E-A9	Q235A	1
14	Right packing frame	6254E-A30-B2	Welding piece	1
15	Top plate protector	6254E-A16	ABS	2
16	The carton includes the following parts			
16.1	Axis pin	6214E-A12	Component	4
16.2	Height adapter	6254E-A11	Q235A	4
16.3	Short foot protector	6254S-A9-B3	Welding piece	2
16.4	Foot protector	6254-A7-B5	Component	2
16.5	Tray	6254E-A7-B4	Component	4
16.6	Chain protection hook	6254E-A2-B1	Component	4

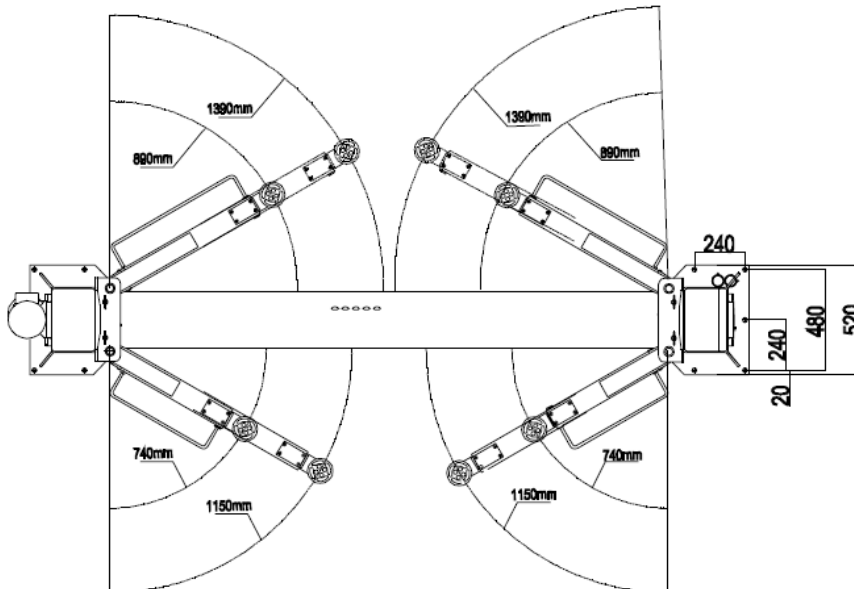
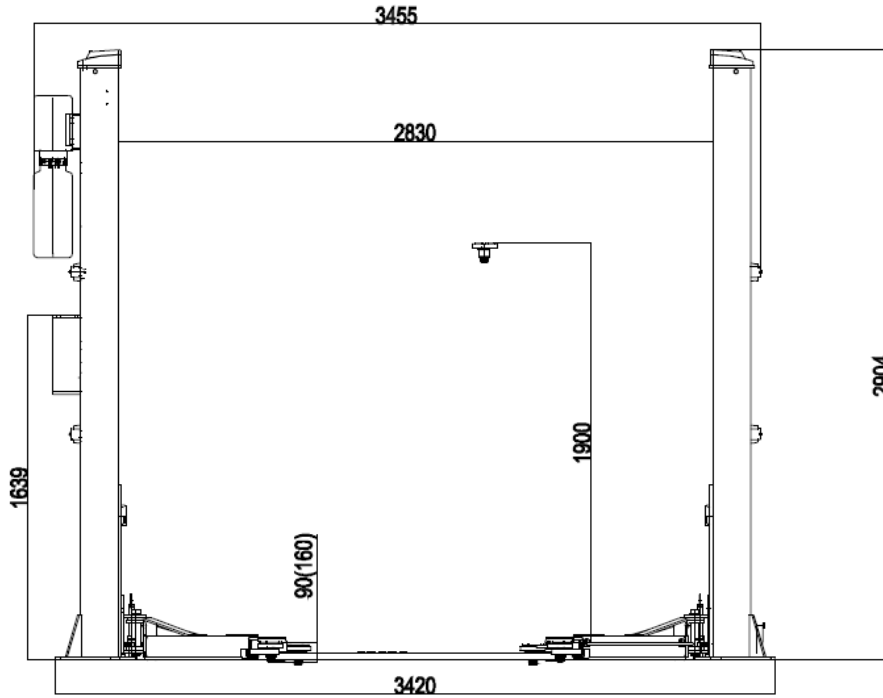
VEHICLE LIFT SPECIALIST

S/N	Name	Drawing#/Size	Description	QTY
167	Short oil hose L=2550mm	6254E-B4-B1	Component	1
16.8	Long oil hose L=2880mm	6254E-B4-B2	Component	1
16.9	Safety block	6254E-A13	45	4
16.10	E-magnet protector	6254E-A15	ABS	4
1611	Locating block	6254E-A17	Q235A	4
16.12	Wire cover	6254E-A18	Q235A	6
16.13	Chain protection	6254-A1-B5		2
16.14	Pull pole	6254-A1-B6	Welding piece	4
16.15	Rubber buffer	6254-A7-B10	Rubber	2
16.16	Outside-Hex Screw	M10*30	Standard piece	4
16.17	Inside-Hex Screw	M8*12	Standard piece	8
16.18	Cross round head screw	M5*10	Standard piece	24
16.19	Cross round head screw	M5*20	Standard piece	12
16.20	Cross round head screw	M6*8	Standard piece	4
16.21	Cross round head screw	M6*16	Standard piece	4
16.22	Cross countersunk head screw	M8*25	Standard piece	4
16.23	Flat washer	Φ6	Standard piece	8
16.24	Flat washer	Φ10	Standard piece	4
16.25	Spring washer	Φ10	Standard piece	4
1626	Nut	M6	Standard piece	8
16.27	Nut	M10	Standard piece	4
16.28	Circlip for shaft	Φ50	Standard piece	4

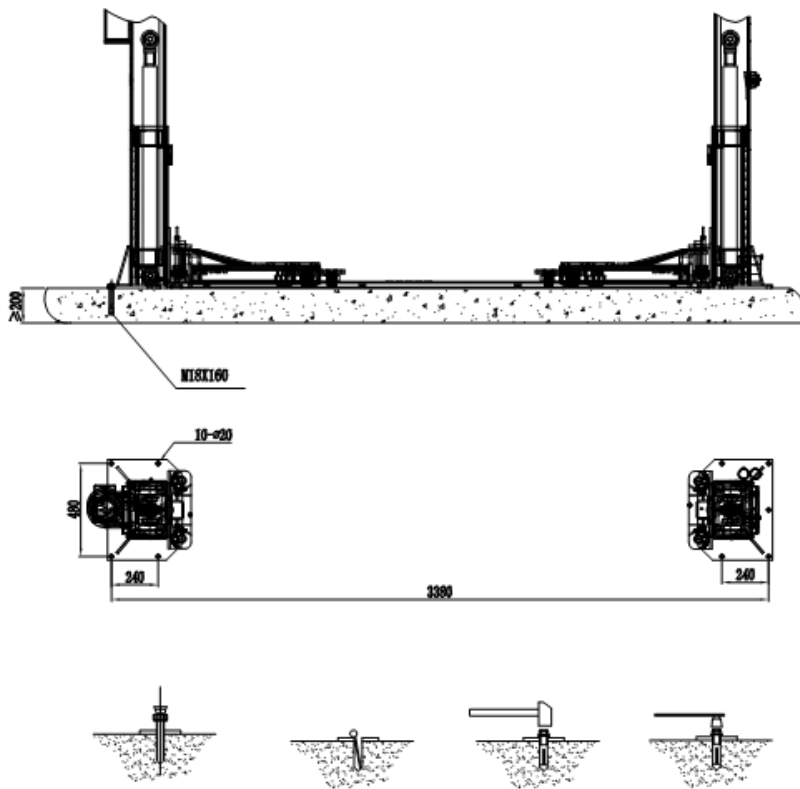
VEHICLE LIFT SPECIALIST

S/N	Name	Drawing#/Size	Description	QTY
16.28	Expansion bolt	M188*160	Standard piece	10

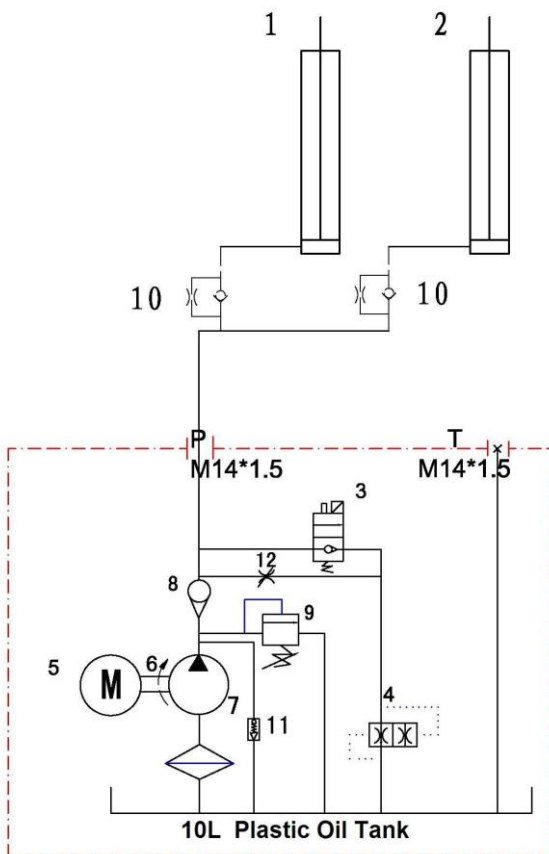
Annex2, Overall diagram



Annex3, Diagram for ground fixing



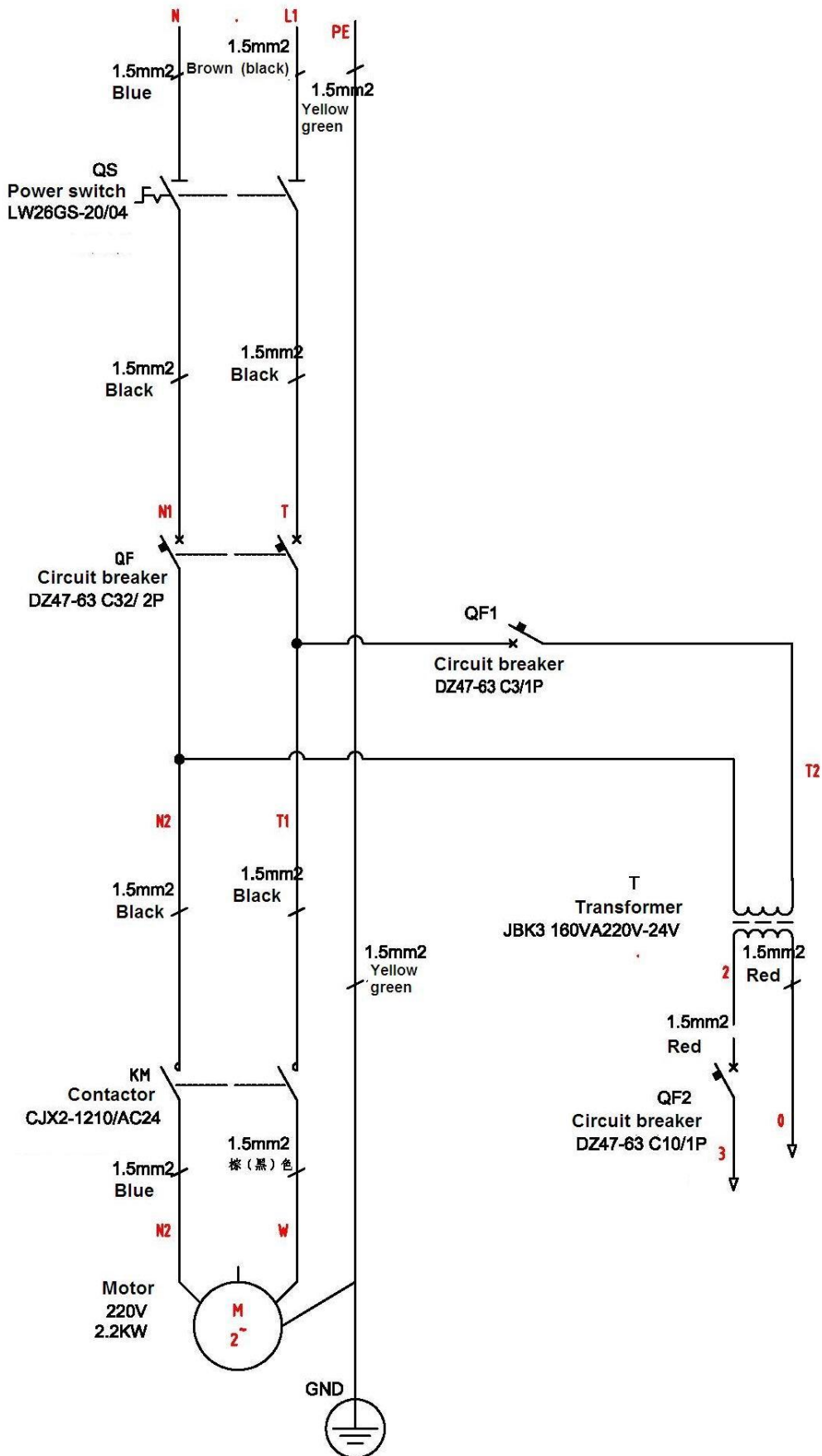
Annex 4, Hydraulic working system



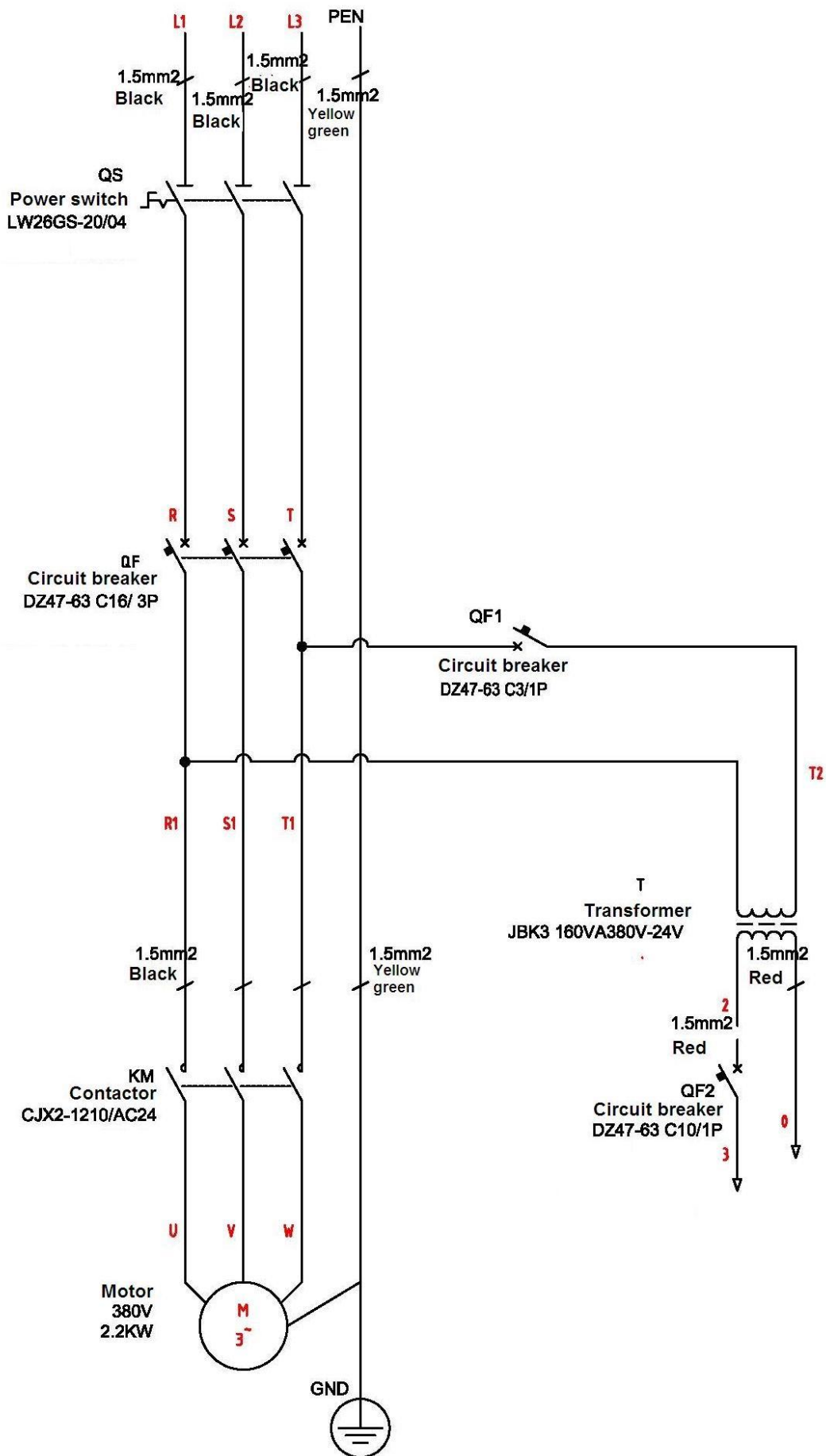
- 1. Main cylinder
- 2. Assistant cylinder
- 3. E-magnetic unloading valve
- 4. Throttle valve
- 5. Motor
- 6. Coupling
- 7. Gear pump
- 8. Single-way valve
- 9. Overflow valve
- 10. Anti-surge valve
- 11. Cushion valve
- 12. Emergent unloading valve

Annex5, Wiring diagram

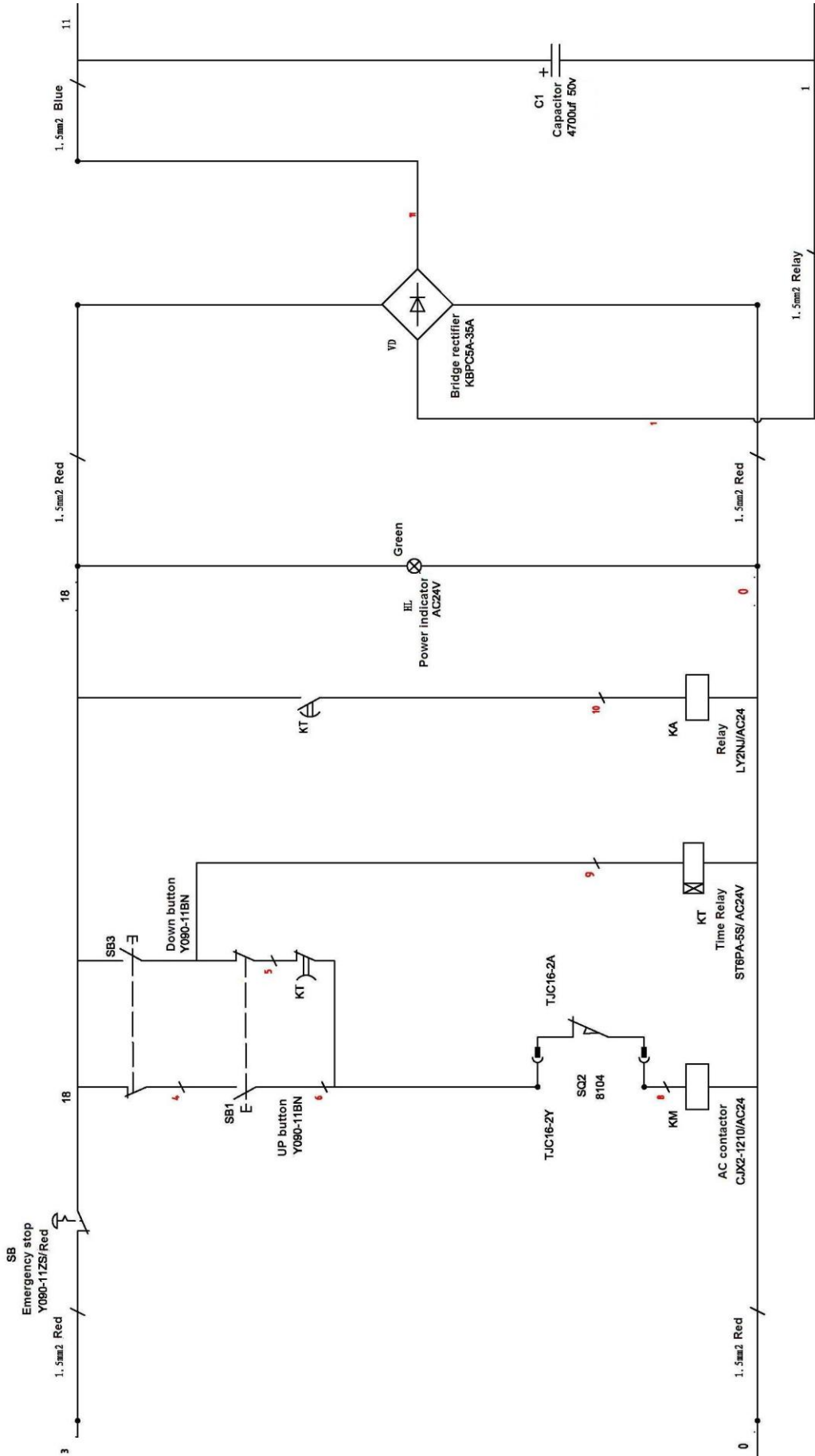
Single phase



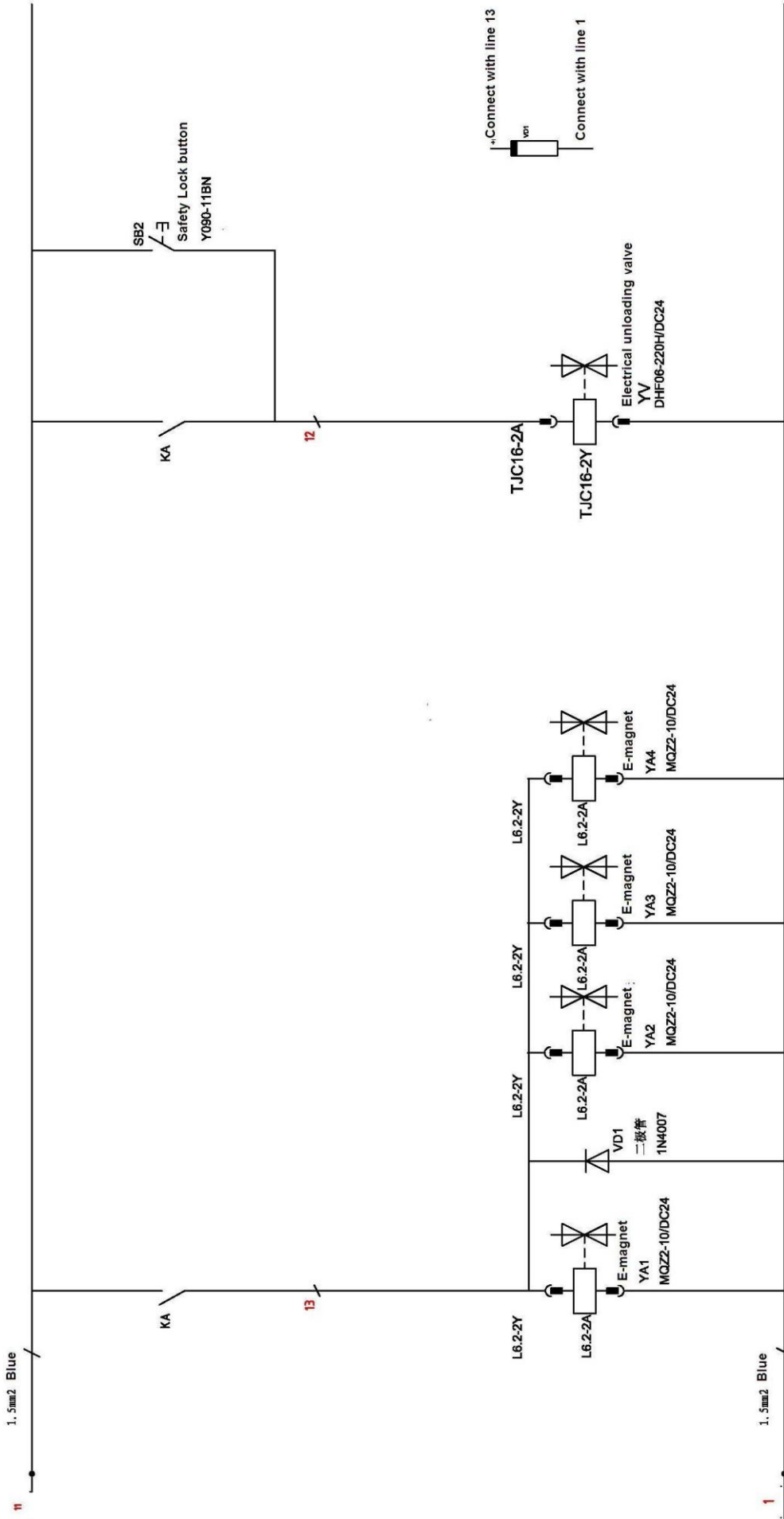
Three phase

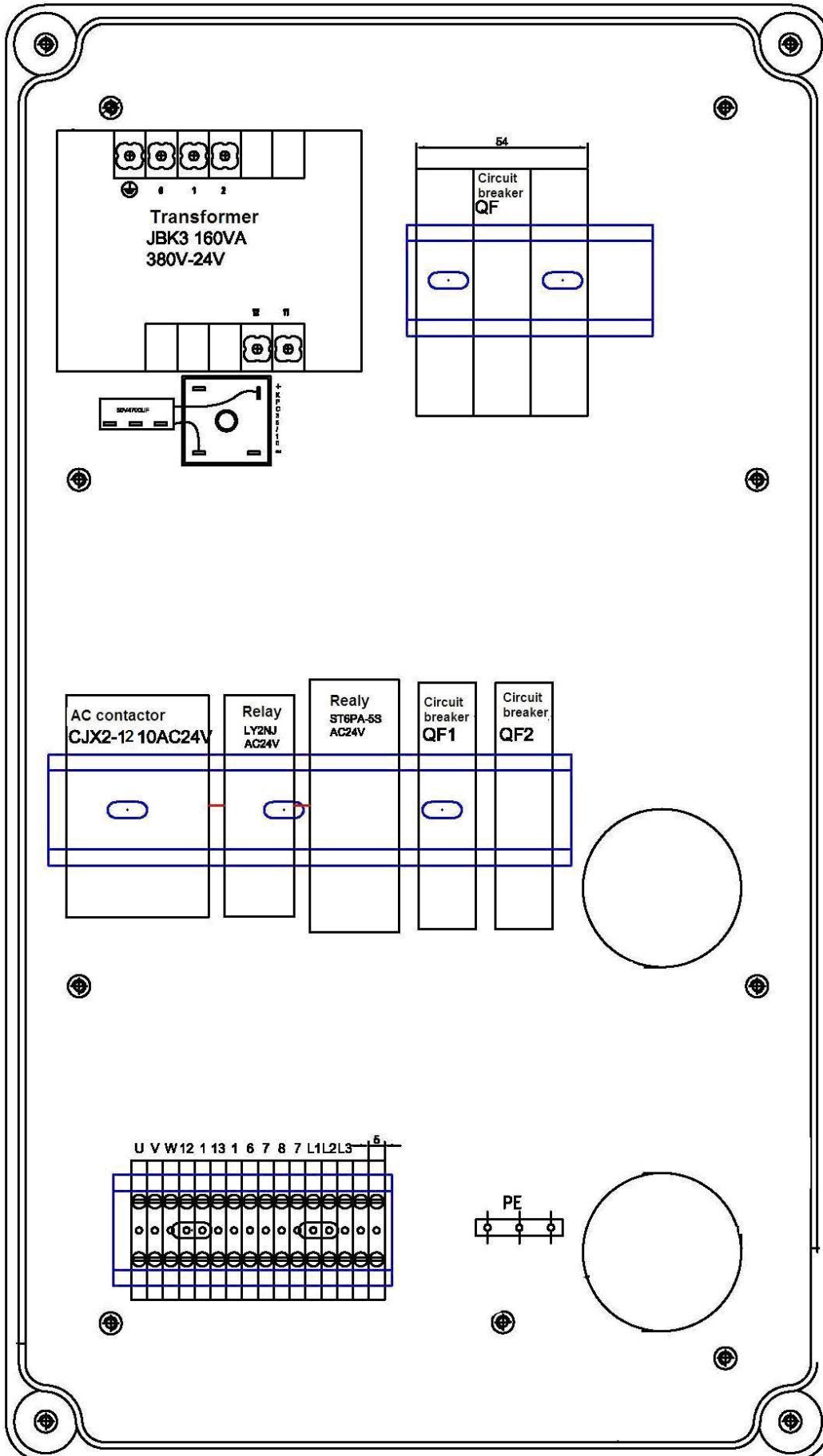


VEHICLE LIFT SPECIALIST



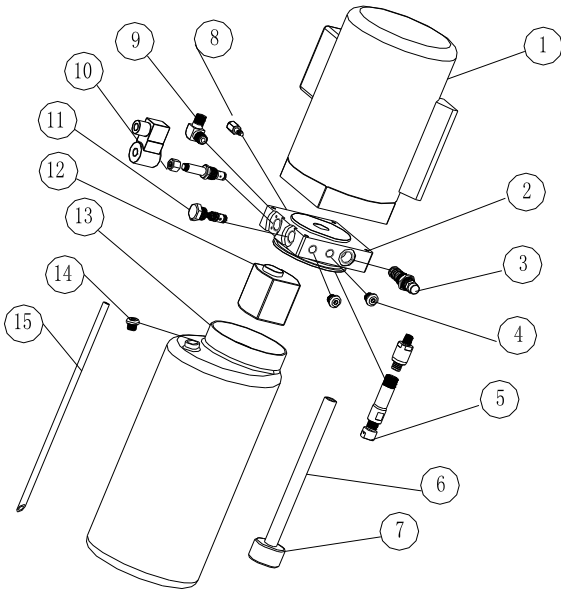
VEHICLE LIFT SPECIALIST





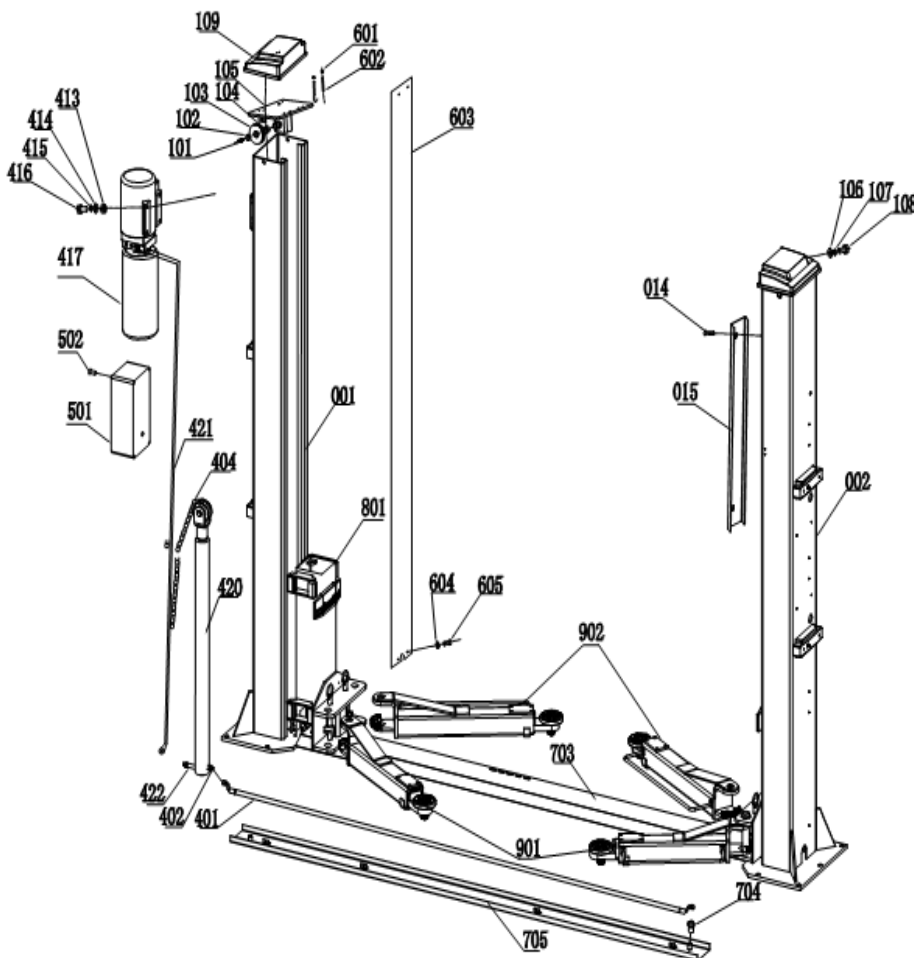
Annex 6, Separate diagrams for the lift

For the pump:

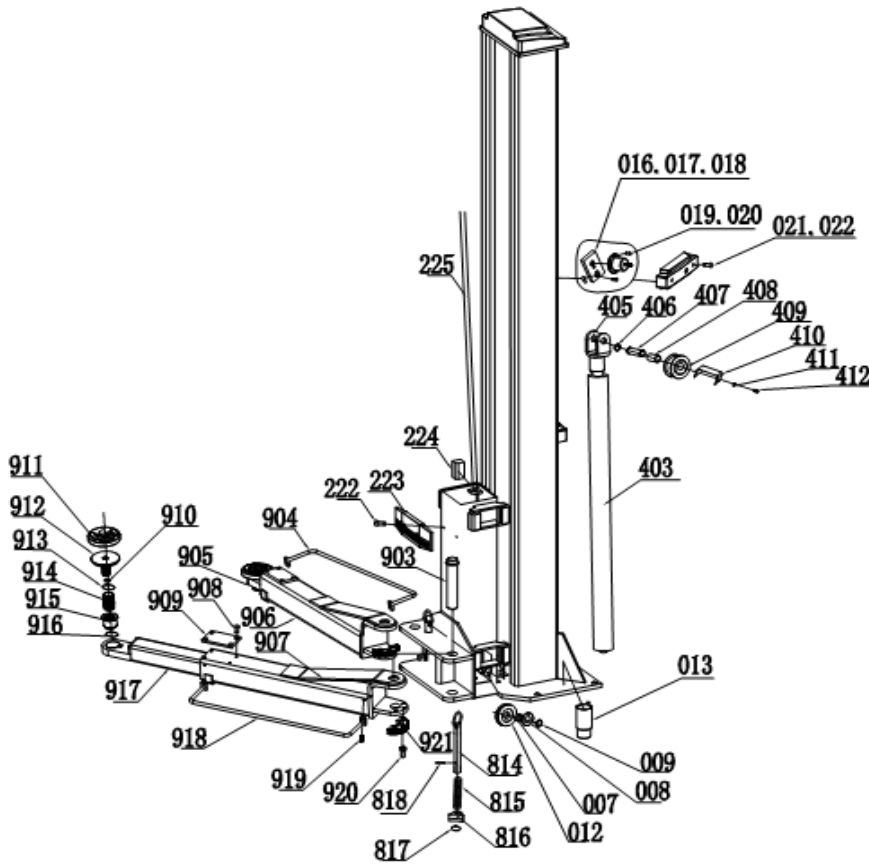


S/N	Name	Qty
1	Motor	1
2	Hydraulic block	1
3	Overflow valve	1
4	Removable plug	2
5	Cushion valve	1
6	Oil absorbing pipe	1
7	Oil filter	1
8	Throttle valve	1
9	Oil pipe tie-in	1
10	E-magnetic unloading valve	1
11	One-way valve	1
12	Gear pump	1
13	Plastic oil tank	1
14	Oil tank cover	1
15	Oil back pipe	1

For the lift



VEHICLE LIFT SPECIALIST



S/N	Material No.	Name	Drawing#/Size	Qty	Description	Remark
001	603001	Main post	EE-6254E-A1	1	Welding piece	
002	603002	Assistant post	EE-6254E-A2		Welding piece	
007	220001	Oil less bearing	SF-1 2512	4	Standard piece	
008	401001	Spacer	EE-6254-A1-B2	4	Q235A	
009	219002	Circlip for shaft	GB/T894.1-1986 25	2	Standard piece	
012	241063	Down wheel	EE-6254E-A1-B1	1	45#	
013	241071	Height adapter	EE-6254E-A11	4	Welding piece	130MM
014	215023	Screw	GB/818-2000 M5*20	16	Standard piece	
015	403009	Oil hose cover	EE-6254E-A18	8	Q235A	
016	264002	Safety plate	EE-6254E-A13	4	45#	
017	403008	Positioning block	EE-6254E-A17	4	Q235A	
018	215002	Screw	GB/818-2000 M6*16	4	Standard piece	
019	215008	Screw	GB/818-2000 M5*10	16	Standard piece	
020	403006	Electromagnet	EE-6254E-A14	4	Component	
021	428036	Electromagnet cover	EE-6254E-A15	4	Plastic	
022	215008	Screw	GB/818-2000. M5*10	8	Standard piece	
101	211001	Screw	M8*12	2	Standard piece	
102	241050	Screen	EE-6254-A3-B3	2	Q235A	
103	241008	Up wheel	EE-6254-A3-B1	2	45#	
104	220002	Oil less bearing	SF-1 2518	2	Standard piece	
105	603005	Topper plate	EE-6254E-A3-B1	2	Welding piece	
106	217005	Flat washer		4	Standard piece	
107	218005	Spring washer		4	Standard piece	
108	212002	Bolt	GB/T5781-2000 M 12*20	4	Standard piece	
109	242024	Topper plate cover	EE-6254E-A16	2	Plastic	

VEHICLE LIFT SPECIALIST

S/N	Material No.	Name	Drawing#/Size	Qty	Description	Remark
801	603004	Carriage	EE-6254E-A2-B2	2	Welding piece	
814	241007	Pulling rod	EE-6254E-A2-B1	4	Welding piece	
815	255002	Compression spring	EE-6214F-A3-B5	4	Standard piece	
816	254015	Teeth block	EE-6214F-A3-B3	4	Q235A	
817	219012	Circlip for shaft		4	Standard piece	
818	224054	Spring pin	5*35	4	Standard piece	
222	214003	Screw	M8*25	4	Standard piece	
223	242002	Door-opening	EE-6254-A7-B10	2	Rubber	
224	242003	Sliding block	EE-6254-A7-B1	16	Nylon 1010	
225	241021	Steel cable release	EE-6254-A6	2	Component	L=8785mm
901		Short arm	EE-6254E-A8	1	Component	
902		Long arm	EE-6254E-A7	2	Component	
903	241016	Pin	EE-6254E-A12	4	Component	
904	603019	Foot protector	EE-6254S-A8-B5	2	Welding piece	
905	603008	Long extensive arm	EE-6254E-A7-B3	2	Welding piece	
906	603007	Long arm	EE-6254E-A7-B1	2	Welding piece	
907	603013	Short arm	EE-6254E-A8-B1	2	Welding piece	
908	214001	Screw	M5*10	16	Standard piece	
909	242018	Rubber pad	EE-6254E-A7-B2	4	Rubber	
910	219014	Circlip for shaft		4	Standard piece	
911	242014	Round rubber pad	EE-6254E-A7-B4-C4	4	Rubber	
912	603009	Tray	EE-6254E-A7-B4-C1	4	Welding piece	
913	219015	Circlip for shaft		8	Standard piece	
914	241065	Casing	EE-6254E-A7-B4-C2	4	Q235A	
915	241064	Inner casing	EE-6254E-A7-B4-C3	4	Q235A	
916	219009	Circlip for shaft		4	Standard piece	
917	603010	Short extensive arm	EE-6254E-A8-B2	2	Welding piece	
918	601018	Foot protector	EE-6254S-A9-B3	2	Welding piece	
919	211001	Screw	M8*12	8	Standard piece	
920	211074	Screw	M10*20	12	Standard piece	
921	254016	Teeth block	EE-6214F-A4-B3	4	Q235A	
401	242004	Oil hose	EE-6254E-A4-B2	1	Component	2880mm
402	241043	Short tie-in	EE-6254-A5-B10	1	35#	With anti-surge valve
403	241002	Assistant cylinder	EE-6254-A5-B-4	1	Component	
404	241003	Leaf chain	LH1234-127	2	Component	
405	601005	Chain wheel seat	EE-6254-A5-B1	2	Welding piece	
406	219002	Circlip for shaft		4	Standard piece	
407	241009	Chain wheel shaft	EE-6254-A5-B2	2	45#	
408	220003	Oil less bearing	SF-1 2548	2	Standard piece	
409	241010	Chain wheel	EE-6254-A5-B3	2	45#	
410	241051	Screen plate	EE-6254-A5-B11	2	Q235A	
411	218002	Spring washer	M6	4	Standard piece	
412	211028	Screw	M6*20	4	Standard piece	
413	216005	Nut	M10	4	Standard piece	
414	217004	Flat washer	M10	4	Standard piece	
415	218004	Spring washer	M10	4	Standard piece	
416	212008	Bolt	M10*30	4	Standard piece	
417		Power unit	EE-6254-A5-B6	1	Component	
420	241001	Main cylinder	EE-6254-A5-B5	1	Component	

VEHICLE LIFT SPECIALIST

S/N	Material No.	Name	Drawing#/Size	Qty	Description	Remark
421	241082	Main oil hose	EE-6254E-A4-B1	1	Component	2555mm
422	243002	Long tie-in	EE-6214-A5-B4	1	Component	With anti-surge valve
501		Electrical system	EE-6254-A4	1	Component	
502	215032	Screw	GB/T70.8-1885 M5*12	4	Standard piece	
601	216003	Nut	M6	8	Standard piece	
602	241026	Chain protection hook	EE-6254-A1-B6	4	Welding piece	
603	242009	Chain protection	EE-6254-A1-B5	2	Q235A	L=2700mm
604	217001	Flat washer		8	Standard piece	
605	215003	Screw	M6*8	4	Standard piece	
703	403002	Cover plate	EE-6254E-A10	1	Q235A	
704	211066	Screw	GB/T70.3-2000 M12*16	2	Standard piece	
705	603011	Bottom trough plate	EE-6254E-A9	1	Welding piece	

Annex 7.Spare parts list



Spare parts list---electrical system

S/N	Material No.	Name	Spec.	Unit	Qty	Note
1	321001	Power switch	LW26GS-20/04	Pcs	1	
2	322003	Button	Y090	Pcs	3	
3	324021	Power Indicator	AD17-22G-AC24	Pcs	1	
4	320009	Transformer	JBK-160VA220V-24V	Pcs	1	Same outlook as item7
5	320098	Transformer	JBK-160VA230V-24V	Pcs	1	Same outlook as item7
6	320054	Transformer	JBK-160VA240V-24V	Pcs	1	Same outlook as item7
7	320057	Transformer	JBK-160VA380V-24V	Pcs	1	
8	320090	Transformer	JBK-160VA400V-24V	Pcs	1	Same outlook as item7
9	320061	Transformer	JBK-160VA415V-24V	Pcs	1	Same outlook as item7
10	330004	AC contactor	CJX2-1210/AC24	Pcs	1	

VEHICLE LIFT SPECIALIST

S/N	Material No.	Name	Spec.	Unit	Qty	Note
11	327004	Circuit breaker	DZ47-63 C16 /3P	Pcs	1	
12	327002	Circuit breaker	DZ47-63 C32 /2P	Pcs	1	
13	327003	Circuit breaker	DZ47-63 C3 /1P	Pcs	1	
14	327010	Circuit breaker	DZ47-63 C6 /1P	Pcs	1	Same outlook as item13
15	321024	Limit switch	ME8104	Pcs	1	
16	336012	Bridge rectifier	KBPC5A-35A	Pcs	1	
17	335007	Capacitor	4700UF/50V	Pcs	1	
18	328021	Control box	Bigger one	Pcs	1	
19	326010	Relay	LY2NJ/AC24	Pcs	1	
20	326011	Relay holder	PTF-08A	Pcs	1	

VEHICLE LIFT SPECIALIST

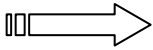
S/N	Material No.	Name	Spec.	Unit	Qty	Note
21	326005	Time relay	ST6PA-5S/AC24V	Pcs	1	
22	326006	Time relay holder	PYF-08A	Pcs	1	

Spare parts list---machine part

S/N	Name	Drawing#	Qty	Material	Note
012	Down wheel	EE-6254E-A1-B1	1	45#	
013	Height adapter	EE-6254E-A11	4	Welding piece	130MM
016	Safety plate	EE-6254E-A13	4	45#	
017	Positioning block	EE-6254E-A17	4	Q235A	
020	Electromagnet	EE-6254E-A14	4	Component	
103	Up wheel	EE-6254-A3-B1	2	45#	
815	Compression spring	EE-6214F-A3-B5	4	Standard piece	
816	Teeth block	EE-6214F-A3-B3	4	Q235A	
223	Door-opening protection	EE-6254-A7-B10	2	Rubber	
224	Sliding block	EE-6254-A7-B1	16	Nylon 1010	
909	Rubber pad	EE-6254E-A7-B2	4	Rubber	
911	Round rubber pad	EE-6254E-A7-B4-C4	4	Rubber	
921	Teeth block	EE-6214F-A4-B3	4	Q235A	
401	Oil hose	EE-6254E-A4-B2	1	Component	2880mm
402	Short tie-in	EE-6254-A5-B10	1	35#	With anti-surge
403	Assistant cylinder	EE-6254-A5-B-4	1	Component	
409	Chain wheel	EE-6254-A5-B3	2	45#	
417	Power unit	EE-6254-A5-B6	1	Component	
420	Main cylinder	EE-6254-A5-B5	1	Component	
421	Main oil hose	EE-6254E-A4-B1	1	Component	2555mm
422	Long tie-in	EE-6214-A5-B4	1	Component	With anti-surge
603	Chain protection	EE-6254-A1-B5	2	Q235A	L=2700mm

Annex8 , Size and weight requirements for
the
vehicle
e

Model No.	A (mm)	B (mm)	C (mm)	D (T)	E (T)	F (T)	G (T)
EE-6253E	2400	2900	100	1.9	1.3	1.3	1.9
EE-6254E	2400	2900	100	2.3	1.9	2.3	1.9



Profile of hydraulic block

