

## **EE-6253/6254**

**Floor Plate Two Post Lift Manual Release**  
**Lifting Capacity: 3200KG/4000KG**

# **INSTALLATION, OPERATION AND MAINTENANCE MANUAL**



Read this entire manual carefully and completely before installation or operation of the lift.

# INDEX

**1. Important safety instructions.....3~4**

- 1.1 Important notices
- 1.2 Qualified personnel
- 1.3 Danger notices
- 1.4 Warning signs
- 1.5 Sound level
- 1.6 Training

**2. Overview of the lift.....5~5**

- 2.1 General descriptions
- 2.2 Technical data
- 2.3 Construction of the lift

**3. Installation instructions.....6~10**

- 3.1 Preparations before installation
  - 3.1.1 Tools and equipments needed
  - 3.1.2 A list for parts checking
  - 3.1.3 Ground conditions
- 3.2 Precautions for installation
- 3.3 Installation
- 3.4 Items to be checked after installation

**4. Operation instructions.....10~13**

- 4.1 Precautions
- 4.2 Descriptions of control box
- 4.3 Flow chart for operation
- 4.4 Operating instructions
- 4.5 Emergency lowering in case of no power

**5. Trouble shooting..... 14~14**

**6. Maintenance.....15~15**

**7. Annex.....16~26**

- Annex1, Packing list of the whole lift
- Annex2, Overall diagram
- Annex3, Diagram for ground fixing
- Annex4, Hydraulic working system
- Annex5, Wiring diagram
- Annex6, Separate diagrams for the lift
- Annex7, Spare parts list
- Annex8, Size and weight requirement for vehicles

## 1. IMPORTANT SAFETY INSTRUCTIONS

### 1.1 Important notices

Ever-Eternal will offer one-year's quality warranty for the whole machine , during which any quality problem will be properly solved to the user's satisfaction. However, we will not take any responsibility for whatever bad consequence resulted from improper installation and operation, overload running or unqualified ground condition.

This 2-posts lift is specially designed for lifting motor vehicles that weighs within its outmost lifting capacity. Users are not allowed to use it for any other purposes. Otherwise, we, as well as our sales agency, will not bear any responsibility for accidents or damages of the lift.

Make sure to pay careful attention to the label of the lifting capacity attached on the lift and never try to lift cars with its weight beyond.

Read this manual carefully before operating the machine so as to avoid economic loss or personnel casualty incurred by wrong operation.

Without our professional advice, users are not permitted to make any modification to the control unit or whatever mechanical unit.

### 1.2 Qualified personnel

1.2.1 Only these qualified staff, who have been properly trained, can operate the lift.

1.2.2 Electrical connection must be done by a competent electrician.

1.2.3 People who are not concerned are not allowed in the lifting area.

### 1.3 Danger notices

1.3.1 Do not install the lift on any asphalt surface.

1.3.2 Read and understand all safety warnings before operating the lift.

1.3.3 The lift, if is not specially designed upon customer's request, is not fit for outdoor use.

1.3.4 Keep hands and feet away from any moving parts. Keep feet clear of the lift when lowering.

1.3.5 Only these qualified people, who have been properly trained, can operate the lift.

1.3.6 Do not wear unfit clothes such as large clothes with flounces, tires, etc, which could be caught by moving parts of the lift.

1.3.7 To prevent evitable incidents, surrounding areas of the lift must be tidy and with nothing unconcerned.

1.3.8 The lift is simply designed to lift the entire body of vehicles, with its maximum weight within the lifting capacity.

1.3.9 Always insure the safety latches are engaged before any attempt to work near or under the vehicle.

1.3.10 Make sure to place the lifting pads to the positions as suggested by vehicle makers and when gradually lift the vehicle to the desired height, operators should be certain that the vehicle will not slant, roll-over or slide in lifting process.

1.3.11 Check at any time the parts the lift to ensure the agility of moving parts and the performance of synchronization. Ensure regular maintenance and if anything abnormal occurs, stop using the lift immediately and contact our dealers for help.

1.3.12 Lower the lift to its lowest position and do remember to cut off the power source when service finishes.

1.3.13 Do not modify any parts of the lift without manufacturer's advice.

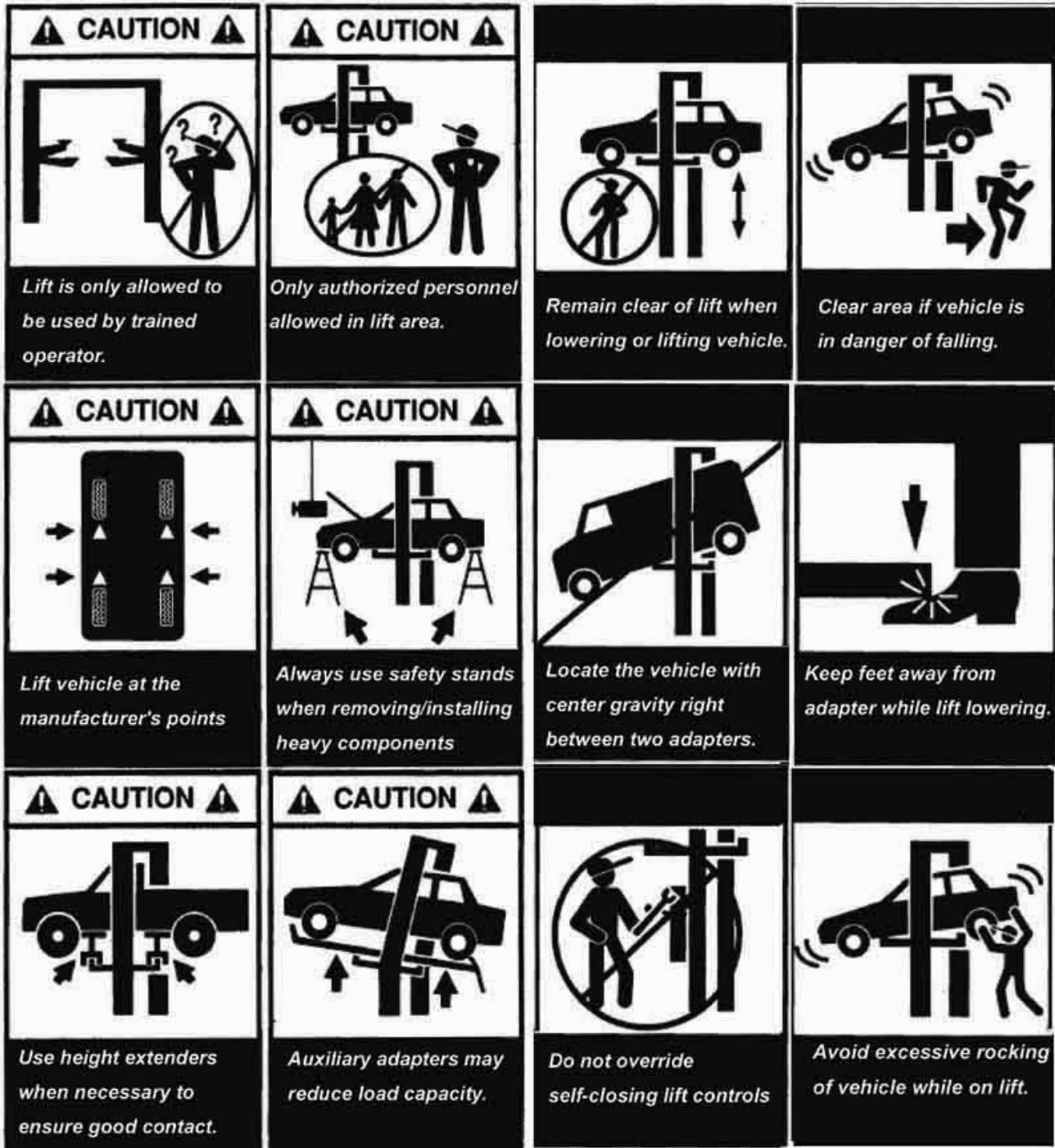
1.3.14 If the lift is going to left used for a long time, users are required to:

- a. Disconnect the power source;
- b. Empty the oil tank;
- c. Lubricate the moving parts with hydraulic oil.

**Attention: For environment protection, please dispose the disused oil in a proper way.**

### 1.4 Warning signs

All safety warning signs attached on the machine are for the purpose of drawing the user's attention to safety operation. The labels must be kept clean and need to be replaced when they are worn-out or have dropped. Read the explanations of the labels carefully and try to memorize them.



### 1.5 Sound Level

The sound emitted from the lift should not exceed 75DB. For the sake of your health, we suggest putting a noise detector in your working area.

### 1.6 Training

Only these qualified people, who have been properly trained, can operate the lift. We are quite willing to provide professional

training for the users when necessary.

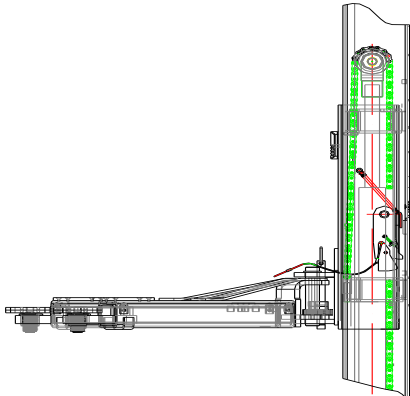
## 2. Overview of the lift

### 2.1 General descriptions

This floor plate two posts lift is composed of posts, carriages, lifting arms, cylinders and motor unit, etc.

The lift is driven by an electro-hydraulic system. The gear pump delivers hydraulic oil to oil cylinders and pushes upwards its piston. The piston drives the chain to raise the carriage and the lifting arms. During lifting process, the safety latch will automatically and firmly bite with the safety teeth block in the posts. Therefore, no sudden dropping-down will happen in case the hydraulic system breaks down.

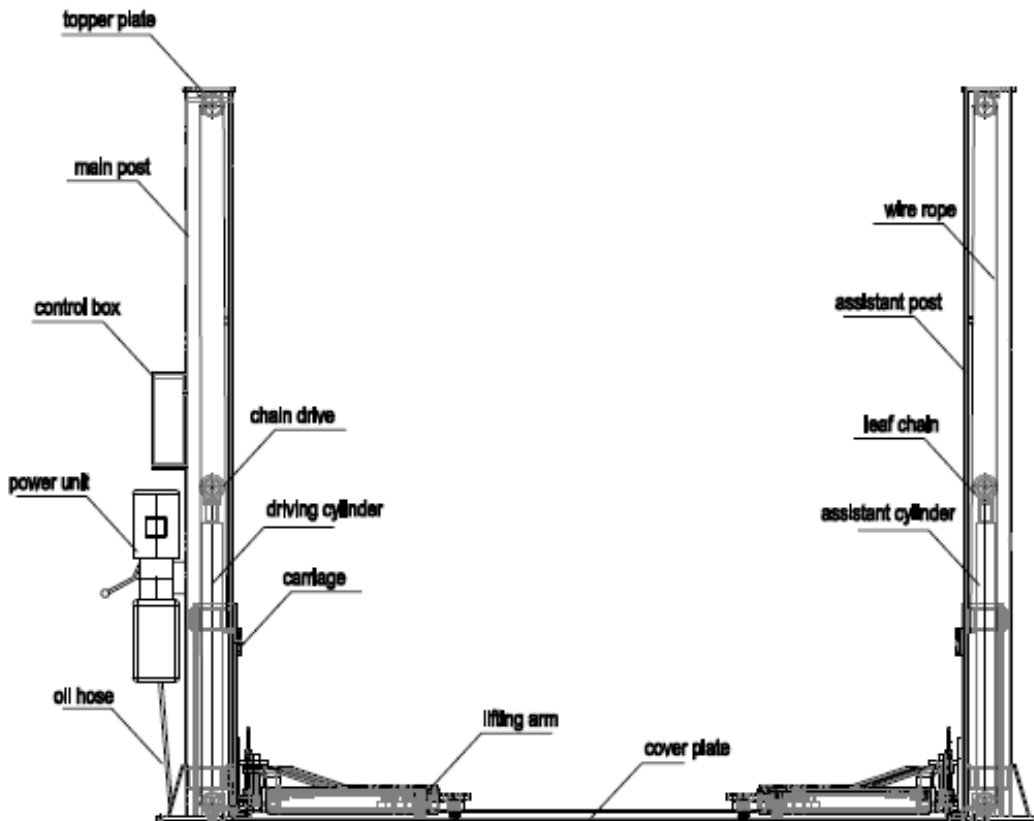
Safety structure:



### 2.2 Technical data

Model	Lifting capacity	Lifting time	Lifting height	Height	Width	Width between posts
EE-6253	3200kg	50 Sec	1900mm	2827mm	3420mm	2830mm
EE-6254	4000kg	50 Sec	1900mm	2827mm	3420mm	2830mm

### 2.3 Construction of the lift



### 3. Installation instructions

#### 3.1 Preparations before installation

##### 3.1.1 Tools and equipments needed

- ✓ Appropriate lifting equipment
- ✓ Anti-abrasion hydraulic oil.
- ✓ Rotary Hammer Drill with 3/4" drill bit.
- ✓ Chalk and tape measure, magnetic plump, 8 metersΦ15 level pipe.
- ✓ Sockets and open wrenches, a set of inside hex wrenches ,cross and straight screw drivers.
- ✓ Hammer, 4pounds, sharp nose pliers, Φ17,Φ19,Φ22 socket spanners.

##### 3.1.2 List for parts checking ---Annex 1 ( Packing list )

Unfold the package and check if any parts missed as per Annex 1. Do not hesitate to contact us in case any parts missed, but if you do not contact us and insist installing upon the lack of some parts, Ever-eternal as well as our dealers will not bear any responsibility for this and will charge for any parts subsequently demanded by the buyer.

##### 3.1.3 Ground conditions

The lift should be fixed on a smooth and solid concrete ground with its strength more than 3000psi, tolerance of flatness less than 5mm and minimum thickness of 200mm. In addition, newly built concrete ground must undergo more than 28days' cure and reinforcement.

#### 3.2 Precautions for installation

3.2.1 Make sure the two posts stand paralleled and are vertical to the ground. No slanting.

3.2.2 Joints of oil hose and wire rope must be firmly connected in order to avoid the looseness of wire rope and leakage of oil hose.

3.2.3 All bolts should be firmly screwed up.

3.2.4 Do not place any vehicle on the lift in the case of trial running.

## 3.3 Installation



**Step 1: Remove the packaging, take out the carton for accessories and cover plate. Please do read and understand this manual thoroughly before next step.**

**Step 2 : Firstly, put something supporting between the two posts or suspend one of the posts by a crane and then remove the bolts on the package**

**Attention :** Please pay special attention not to let the post fall down because it may cause casualty or bring damages to the accessories fixed in the post.

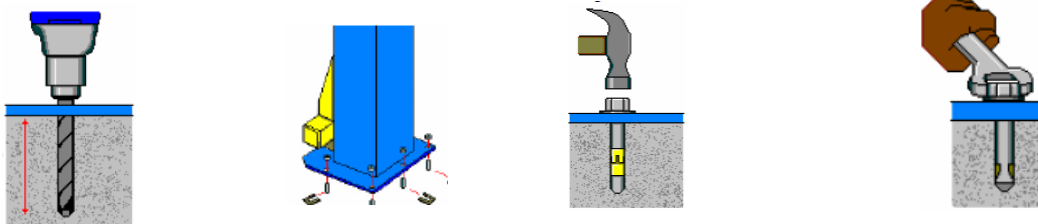
**Step 3 : When the first post has been taken away, place something supporter under the second post and then remove the bolts on the package.**

**Step 4: Fix the standing position for the two posts and erect the main and assistant post, with a width of 2830mm between them.**

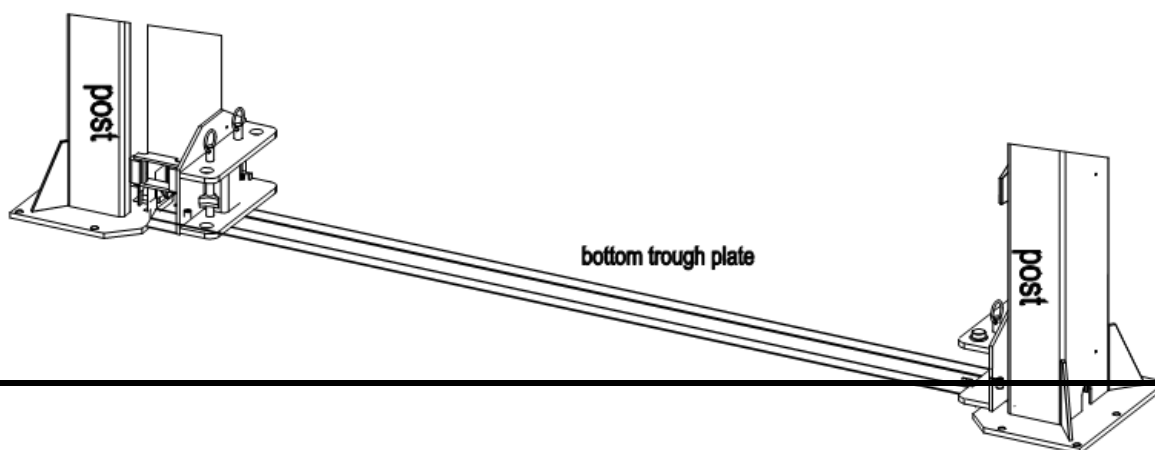
1. Unfold the package and decide on which post the power unit will be mounted.
2. Draw an outline of the base plate on the ground with chalk and ascertain the position for the post.

**Step 5: Erect the posts, main post first and then the assistant post**

1. Drill anchor holes for each plug bolts on the ground with an electrical drill. Make sure to drill vertically.
2. After holes have been drilled, remove thoroughly the debris and dust in them and ascertain that the posts stay upon the circle previously drew by chalk.

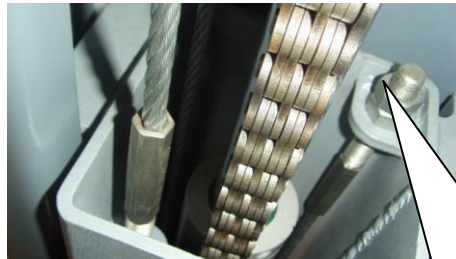
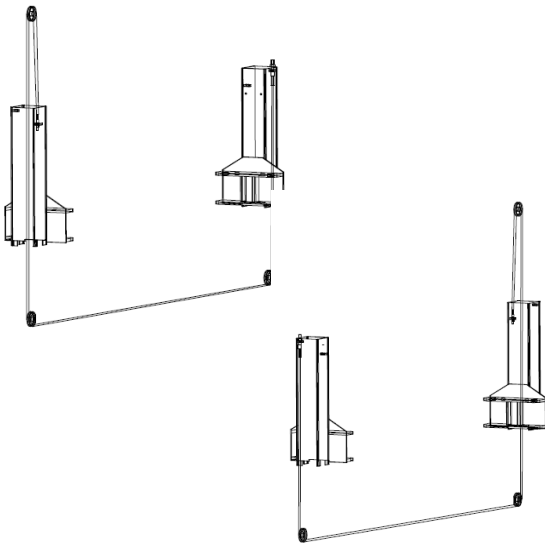


**Step 6 : Install the bottom trough plate**



## Step7: Connect the wire rope

1. Raise carriages on both sides approximately 800mm above the ground.
2. Make sure that the safety locks on each column are fully engaged before attempting to route equalizer cables.
3. Carriages must be on the same height from the floor before proceeding.
4. Install according to the diagram of wire rope.
5. After the wire rope has been fixed, adjust and make rope at both sides be with the same tightness which could be judged by the sound emitted during lifting process. If currently installers can not ascertain, they can make adjustment in trial running process.
6. Grease the wire rope and chain after they have been fixed. (It is a must.)

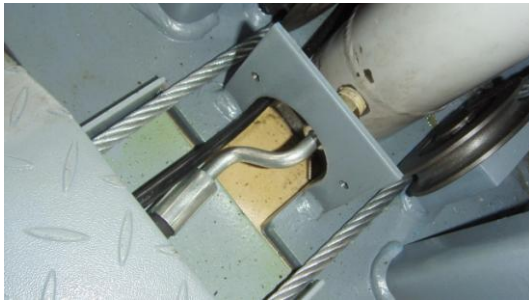
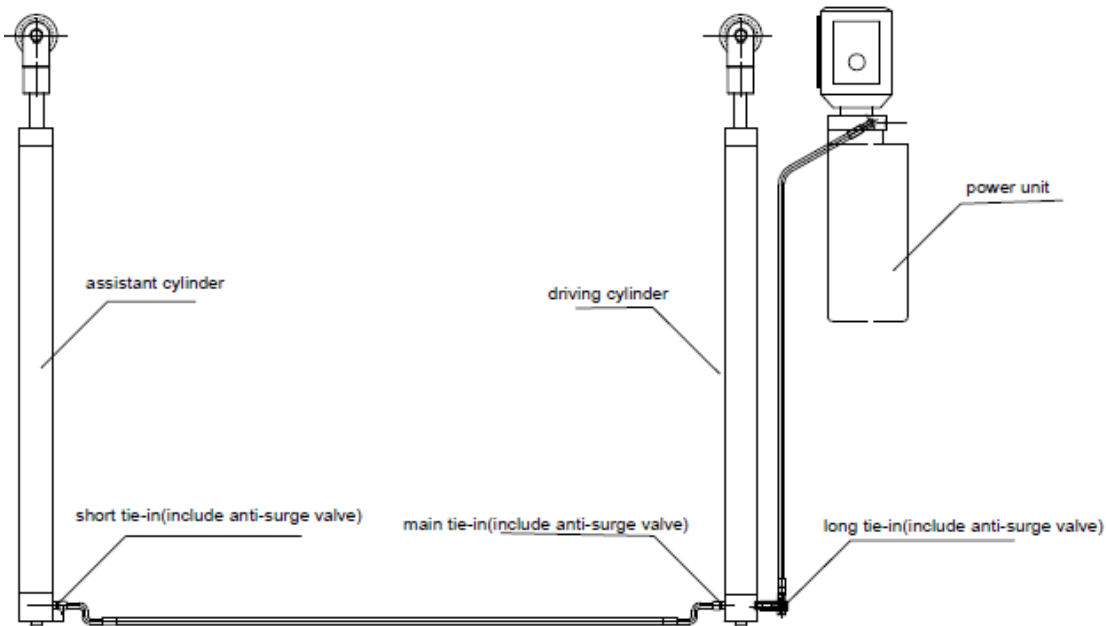


Bolt to adjust the tightness of the wire rope

## Step8: Connect the oil hose

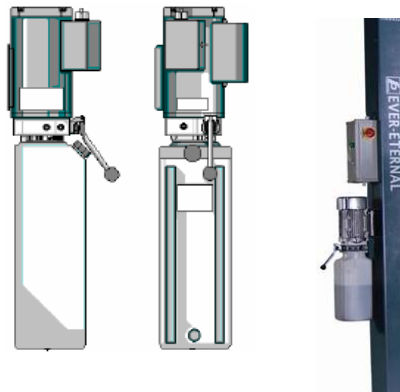
- 1 Make sure all hose ends are clean.
- 2.Connect the oil hose as per the following diagram.



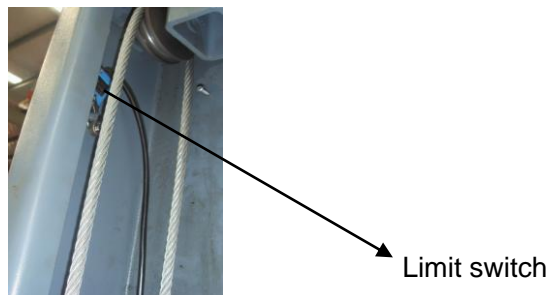


**Step9: Mount the power unit and the control box**

1. Mount the power unit onto the main post.
2. Connect the power unit with the control box as per the wiring diagram.

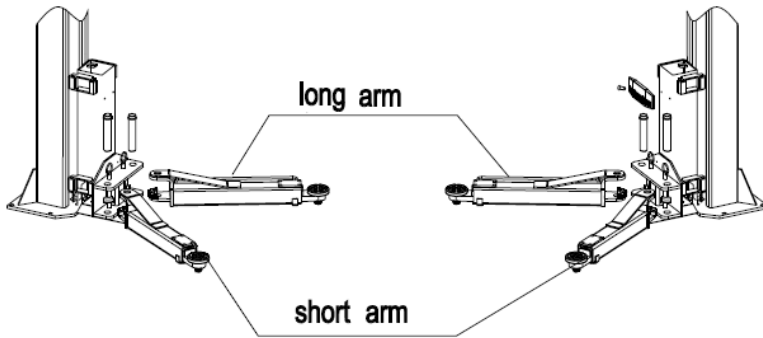


3. Connect the limit switch



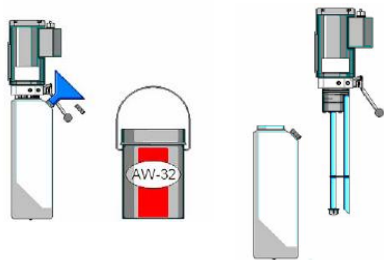
**Step10: Install the lifting arms**

Connect the lifting arm and the carriage by pins. Install the swing arms on the carriages and make sure the safety lock and safety teeth are well matched.



**Step11: Fill with hydraulic oil**

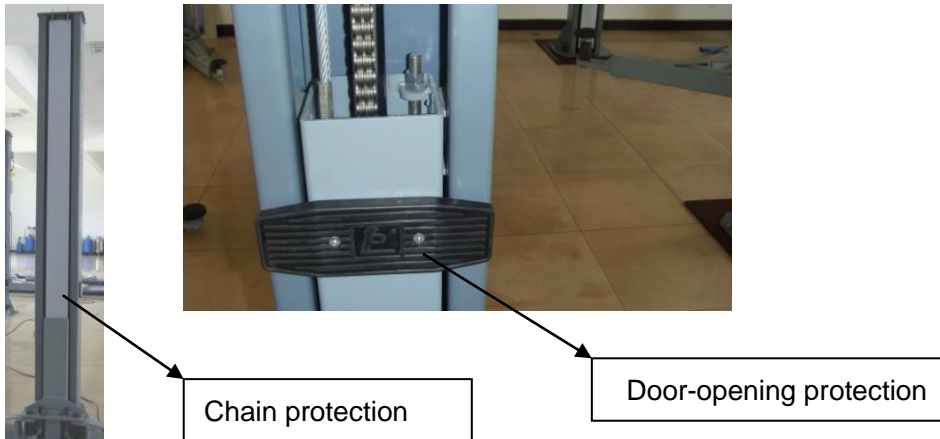
The volume of oil tank is 10L. To insure the lift work normally, the amount of oil in it should reach 80% of the tank's total volume.



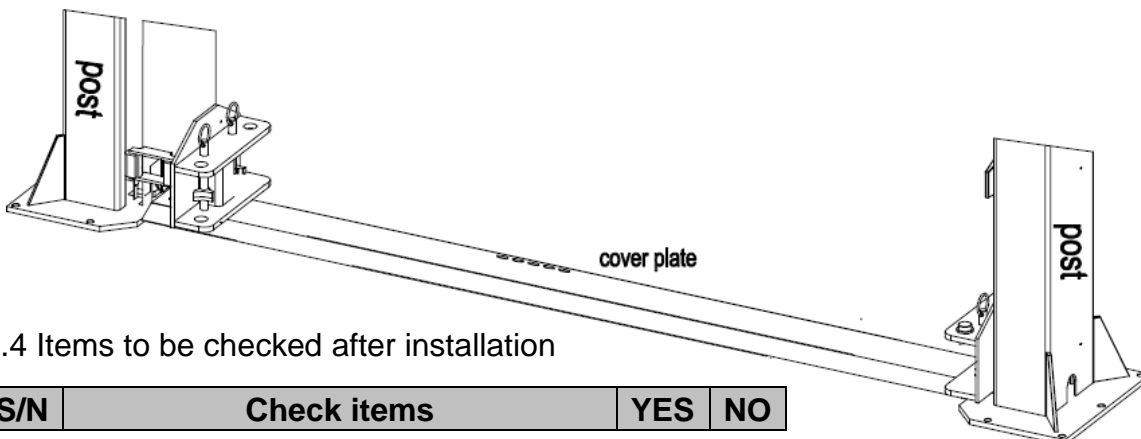
**Step12: Trial running**

1. Do refer to the operation instructions in advance and keep in mind that no vehicle left on the lift in the process of trial running.
2. Check if all the connections are in good condition.

**Step 13: Install the chain protection and door-opening protection**



**Step14: Install the cover plate**



**3.4 Items to be checked after installation**

S/N	Check items	YES	NO
-----	-------------	-----	----

1	Are the posts vertical to the floor?		
2	Are the two posts paralleled?		
3	Is the oil hose well connected?		
4	Is the wire rope well connected?		
5	Are all lifting arms well fixed?		
6	Are electrical connections right?		
7	Are the rest joints firmly screwed?		
8	Are all items need lubricating added with grease?		

## 4. Operation instructions

### 4.1 Precautions

4.1.1 Check all the joints of oil hose. Only when there is no leakage, the lift can start work.

4.1.2 The lift, if its safety device malfunctions, shall not be used.

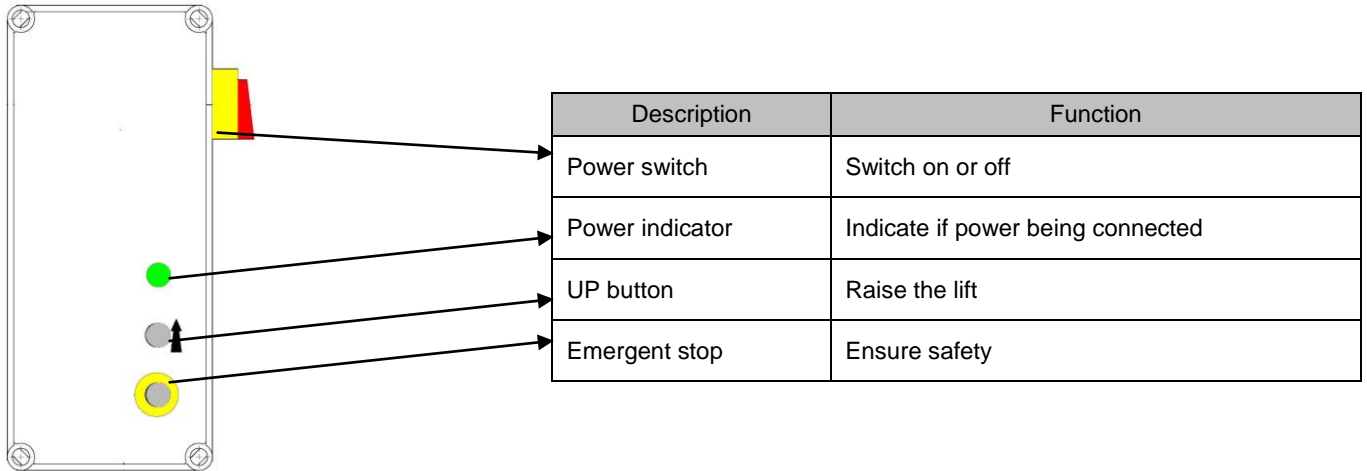
4.1.3 The machine shall not lift or lower an automobile if its center of gravity is not positioned midway of the swing arms. Otherwise, the Ever-Eternal as well as our dealers will not bear any responsibility for any consequence resulted thereby.

4.1.4 Operators and other personnel concerned should stand in a safety area during lifting and lowering process.

4.1.5 When lifting arms rise to the desired height, switch off the power at once to prevent any mal-operation done by unconcerned people.

4.1.6. Make sure the safety lock of the lift is engaged before start working under the vehicle and no people under the vehicle during lifting and lowering process.

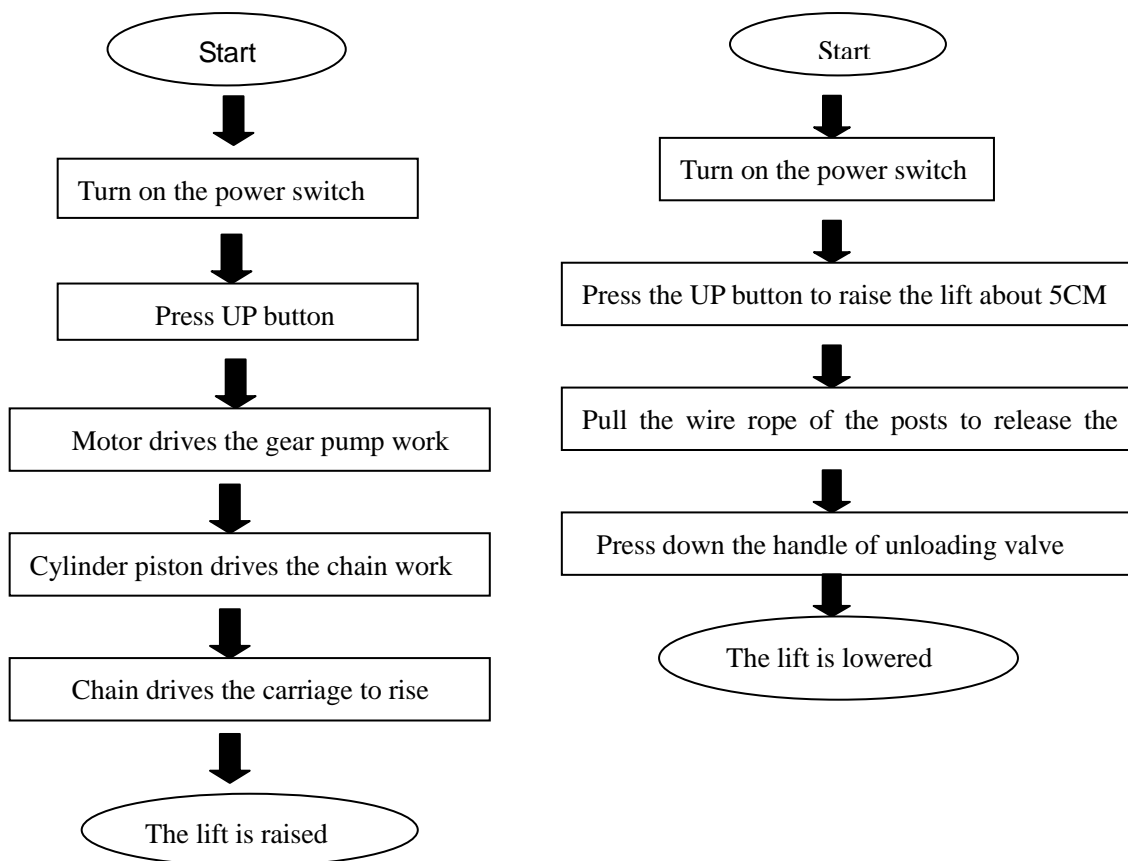
### 4.2 Descriptions of control box



### 4.3 Flow chart for operation

**Raising**

**Lowering**



## 4.4 Operation instructions

### Raise the lift

1. Make sure that you have read and understood the operation manual before operation.
2. Park the vehicle between two posts.
3. Adjust the lifting arms until they reach the supporting positions of the vehicle and make sure the gravity of vehicle located in the center of four lifting arms.
4. Switch on and press the "UP" button on the control box until pads of lifting arms touched the prop-position of vehicle.
5. Keep on raising the vehicle to let it have a bit clearance from the ground and check again its stability.
6. Raise the vehicle to the desired height, check it is safe or not, press down the handle of unloading valve to have the safety lock engaged, turn off the emergency stop button and then perform maintenance or repair work underneath.

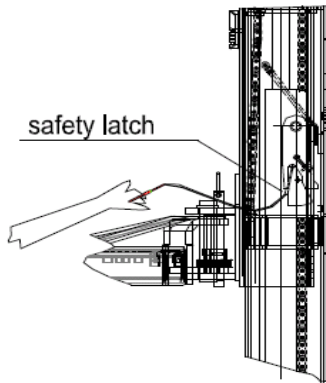
### Lower the lift

1. Switch on.
2. Press the UP button to loose the safety lock.
3. Pulling the wire rope (SAFETY LATCH) on each post to release the safety lock before lowering.
4. Lower the lift by pressing the handle of manual unloading valve.
5. After the lifting arms lowed to the lowest position, pull them to the horizontal position and clear up all the obstacles.
6. Drive the vehicle away.

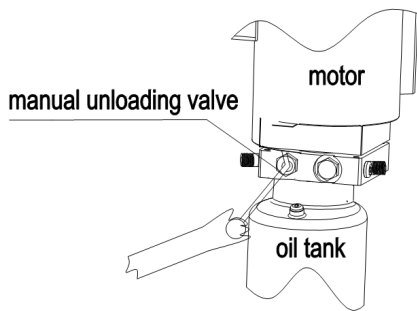
## 4.5 Emergency lowering in case of no power

The carriage is not engaged:

- a. Pull off the safety latch release wires on the two posts.

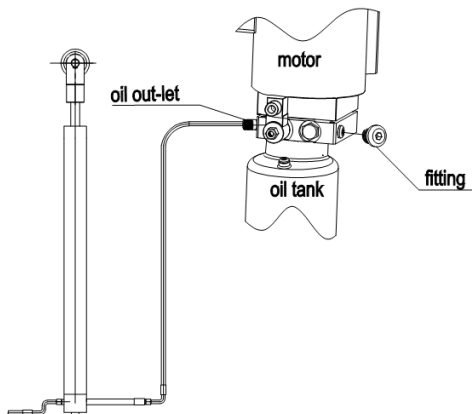


- b. Press the handle of the manual unloading valve to lower the carriage.

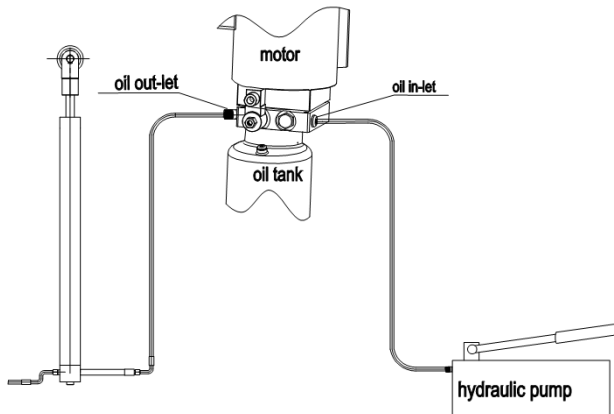


The carriage is engaged:

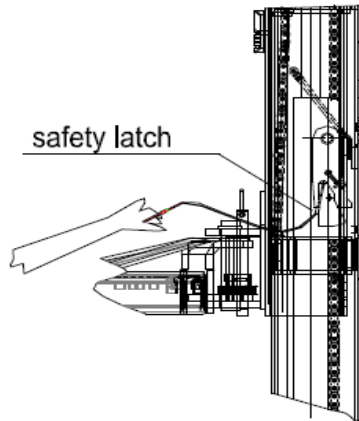
- a. Screw off the fitting (opposite to the oil out-let) to connect the manual hydraulic pump.



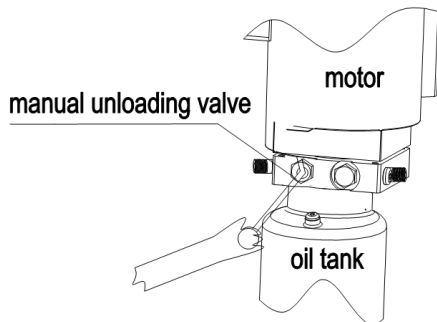
- b. Press the handle of the hydraulic pump (optional) to supply oil to the cylinder and release the lock.



- c. Pull on the safety latch steel wires attached on the two posts.



d. Press the handle of the manual unloading valve to lower the carriage.



## 5. Trouble Shooting

ATTENTION: If the trouble could not be fixed by yourself, please do not hesitate to contact us for help .We will offer our service

## VEHICLE LIFT SPECIALIST

at the earliest time we can. By the way, your troubles will be judged and solved much faster if you could provide us more details or pictures of the trouble.

TROUBLES	CAUSE	SOLUTION
Abnormal noise	Abrasion exists on insides surface of the posts.	Grease the inside of the post.
	Trash in the post.	Clear the trash
Motor does not run and will not rise	The wire connection is loose.	Check and make a good connection.
	The motor is blown.	Replace it.
	The limit switch is damaged or the wire connection is loose.	Connect it or adjust or replace the limit switch.
Motor runs but will not raise	The motor run reversely.	Check the wire connection.
	Overflow valve is loose or jammed.	Clean or adjust it.
	The gear pump is damaged.	Replace it.
	Oil level is too low.	Add oil.
	The oil hose became loose or dropped off.	Tighten it.
	The cushion valve became loose or jammed.	Clean or adjusts it.
Carriages go down slowly after being raised	The oil hose leaks.	Check or replace it.
	The oil cylinder is not tightened.	Replace the seal.
	The single valve leaks.	Clean or replace it.
	The overflow valve leaks.	Clean or replace it.
	Manual unloading valve or electrical unloading valve leaks.	Clean or replace it.
Raising too slow	The oil filter is jammed.	Clean or replace it.
	Oil level is too low.	Add oil.
	The overflow valve is not adjusted to the right position.	Adjust it.
	The hydraulic oil is too hot ( above 45° ) .	Change the oil.
	The seal of the cylinder is abraded.	Replace the seal.
	Inside surface of the posts is not well greased.	Add grease.
Lowering too slow	The throttle valve jammed.	Clean or replace.
	The hydraulic oil is dirty.	Change the oil.
	The anti-surge valve jammed.	Clean it.
	The oil hose jammed.	Replace it.
The wire rope is abraded	No grease when installation or out of lifetime	Replace it.

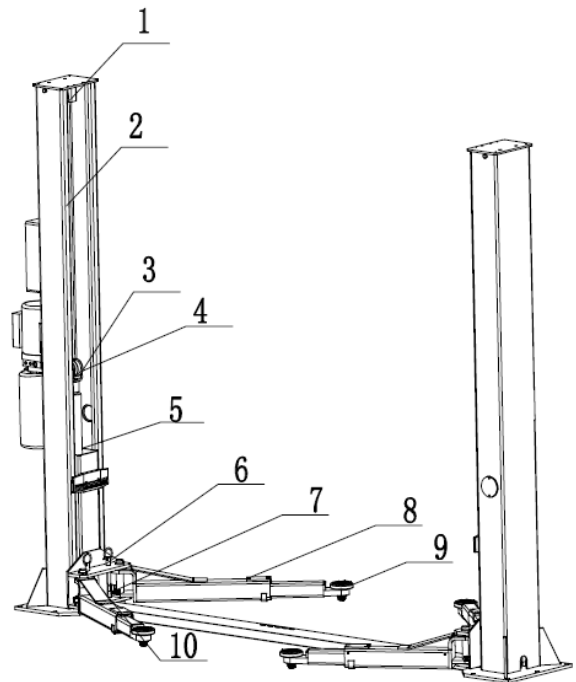
## 6. Maintenance

## VEHICLE LIFT SPECIALIST

Easy and low cost routine maintenance can ensure the lift work normally and safely. Following are requirements for routine maintenance. You may choose the frequency of routine maintenance by consulting your lift's working conditions and time.

THE FOLLOWING PARTS NEED TO BE LUBRICATED

S/N	Description
1	Upper wheel
2	Wire rope
3	Chain wheel
4	Chain
5	Sliding block
6	Pin
7	Arm block
8	Lifting arm
9	Tray
10	Down wheel



### 6.1. Daily checking items before operation

The user must perform daily check. Daily check of safety latch system is very important – the discovery of device failure before action could save your time and prevent you from great loss, injury or casualty.

- Before operation, judge whether the safety latch is engaged by sound.
- Check whether oil hose well connected and whether it leaks or not.
- Check the connections of chain and wire rope and check the power unit.
- Check whether plug bolts firmly screwed.
- Check if safety teeth and safety block matched well or not.

### 6.2. Weekly checking items

- Check the flexibility of moving parts.
- Check the working conditions of safety parts.
- Check the amount of oil left in the oil tank. Oil is enough if the carriage can be raised to highest position. Otherwise, oil is insufficient.
- Check whether plug bolts firmly screwed.

### 6.3. Monthly checking items

- Check whether plug bolts firmly screwed.
- Check the tightness of the hydraulic system and screw firm the joints if it leaks.
- Check the lubrication and abrasion circumstance of axial pins, carriages, lifting arms and other related parts and replace in time with new ones if they failed to work well.
- Check the lubrication and abrasion circumstance of wire rope.

### 6.4. Yearly checking items

- Empty the oil tank and check the quality of hydraulic oil.
- Wash and clean the oil filter.

If users strictly follow the above maintenance requirements, the lift will keep in a good working condition and meanwhile accidents could be avoided to a large extent.

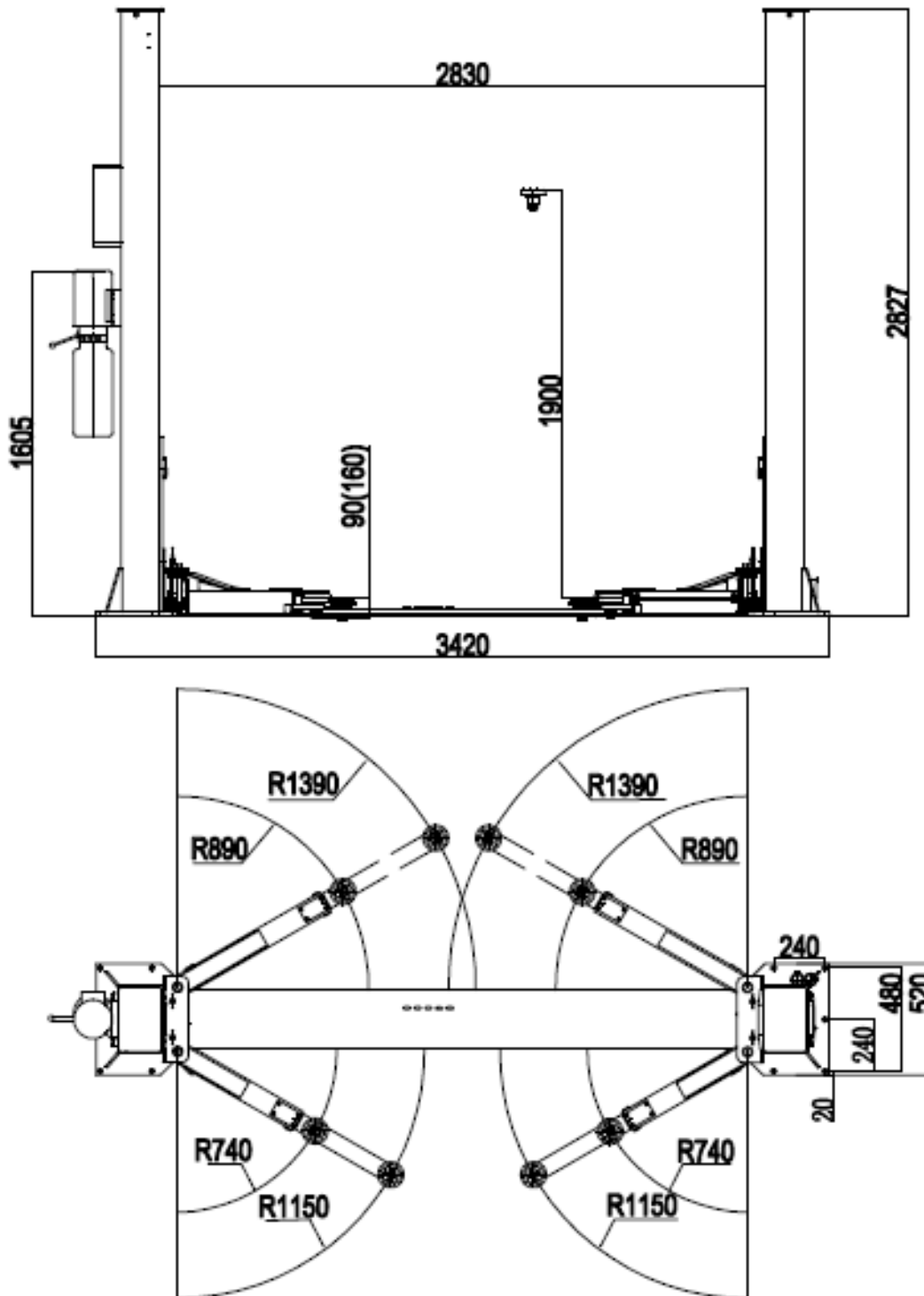
## 7. ANNEX



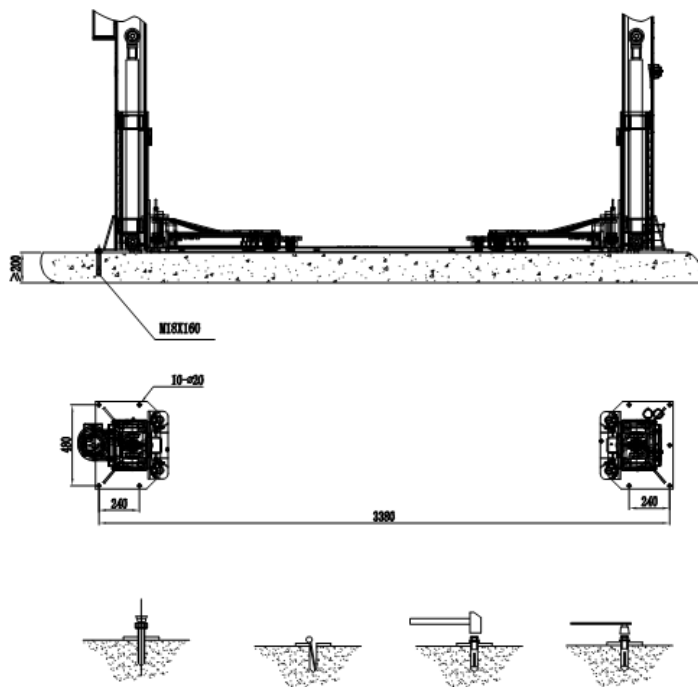
## Annex 1 , Packing List of the whole lift

S/N	Name	Drawing # / Size	Description	Q'ty
1	Posts	6254M-A1	Component	2
2	Carriage	6254M-A2	Component	2
3	Long arm bracket	6254E-A7	Component	1 left and 1 right
4	Short arm bracket	6254E-A8	Component	1 left and 1 right
5	Right packing frame	6254E-A30-B1		1
6	Left packing frame	6254E-A30-B2		1
7	Assistant cylinder	6254-A5-B4	Component	1
8	Main cylinder	6254-A5-B5	Component	1
9	Power unit	6254-A5-B6	Component	1
10	Cover plate	6254E-A10	Q235A	1
11	Bottom trough plate	6254E-A9	Welding piece	1
12	Electrical system	6254M-A5	Component	1
13	Wire rope L=8785mm	6254-A6	Component	2
14	Power unit carton	825*225*312mm		1
15	Parts carton(include the following parts	850*340*130mm		1
15.1	Rubber protector	6254-A7-B10	Rubber	2
15.2	Short oil hose L=1300mm	6254-A5-B7	Component	1
15.3	Short oil hose L=2880mm	6254-A5-B9	Component	1
15.4	Chain protection hook	6254-A1-B6	Q235A	4
15.5	Tray	6254E-A7-B4	Component	4
15.6	Foot protector	6254-A7-B5	Component	2
15.7	Short foot protector	6254S-A9-B3	Welding piece	2
15.8	Height adapter	6254E-A11	Q235A	4
15.9	Pin	6214F-A12	Component	4
15.10	Chain protection	6254-A1-B5	Cloth	2
15.11	Chain protection hook	6254-A1-B6	Welding piece	4
15.12	Bolt	M10*30	Standard piece	4
15.13	Screw	M8*12	Standard piece	8
15.14	Screw	M8*25	Standard piece	4
15.15	Screw	M6*8	Standard piece	4
15.16	Flat washer	M6	Standard piece	8
15.17	Flat washer	M10	Standard piece	4
15.18	Spring washer	M10	Standard piece	4
15.19	Nut	M10	Standard piece	4
15.20	Nut	M6	Standard piece	8
15.21	Circle for shaft	50	Standard piece	4
15.22	Expansion bolt	M18*160	Standard piece	10

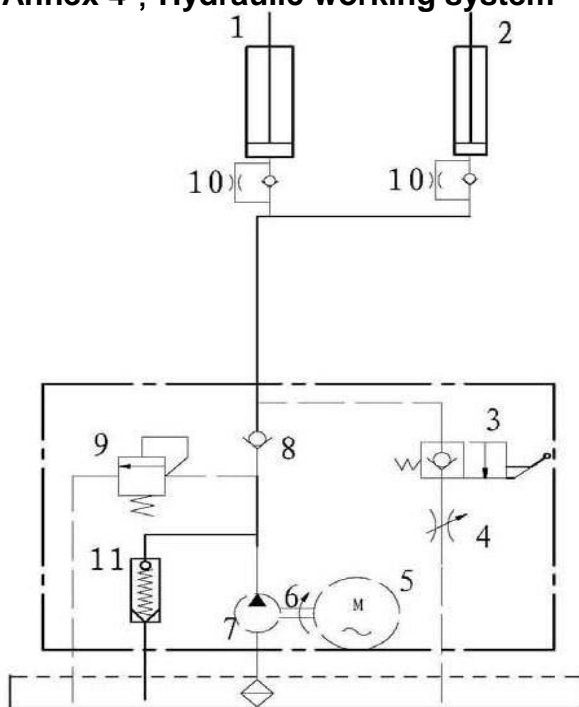
Annex2 , Overall diagram



**Annex3 , Diagram for ground fixing**



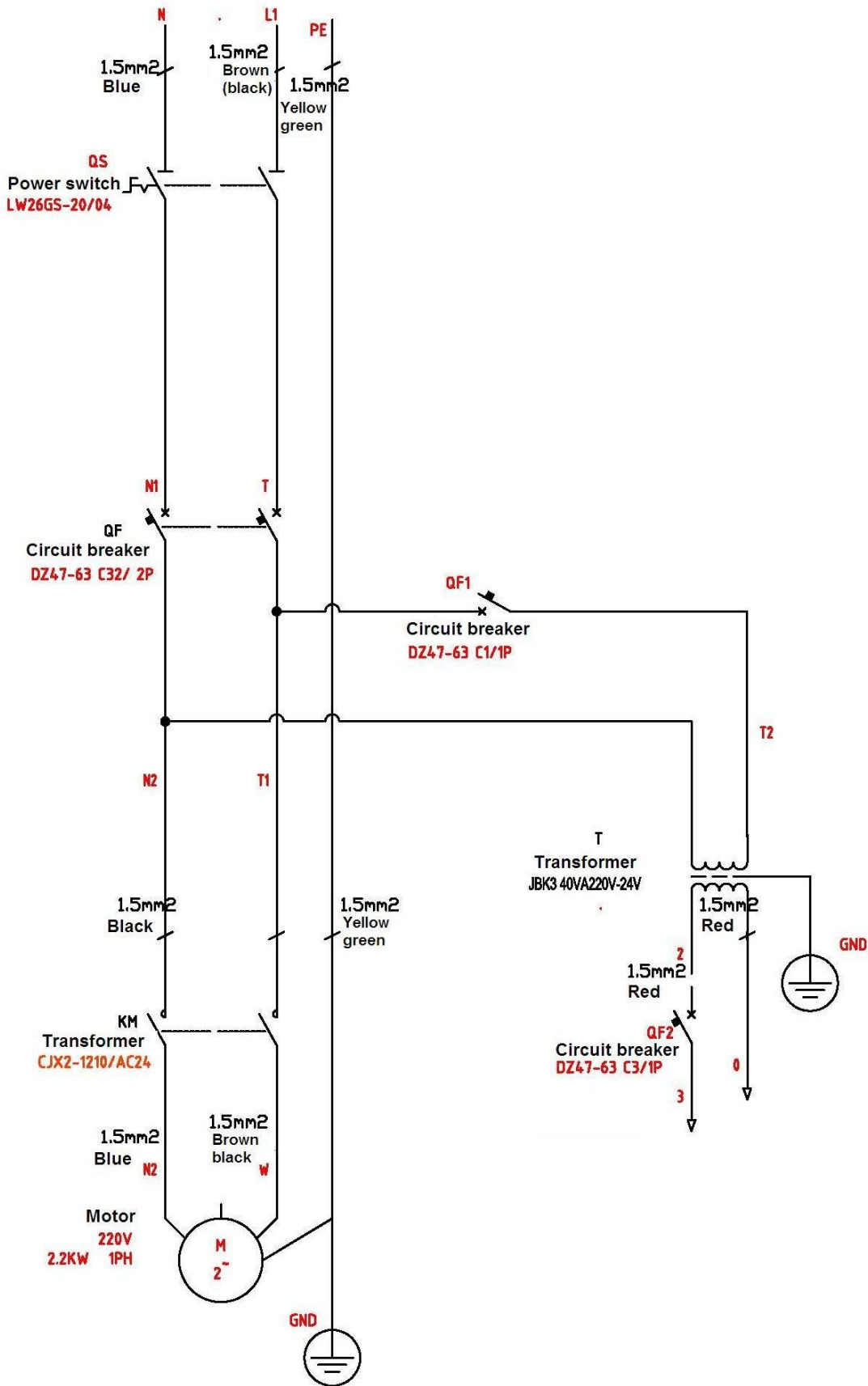
**Annex 4 , Hydraulic working system**



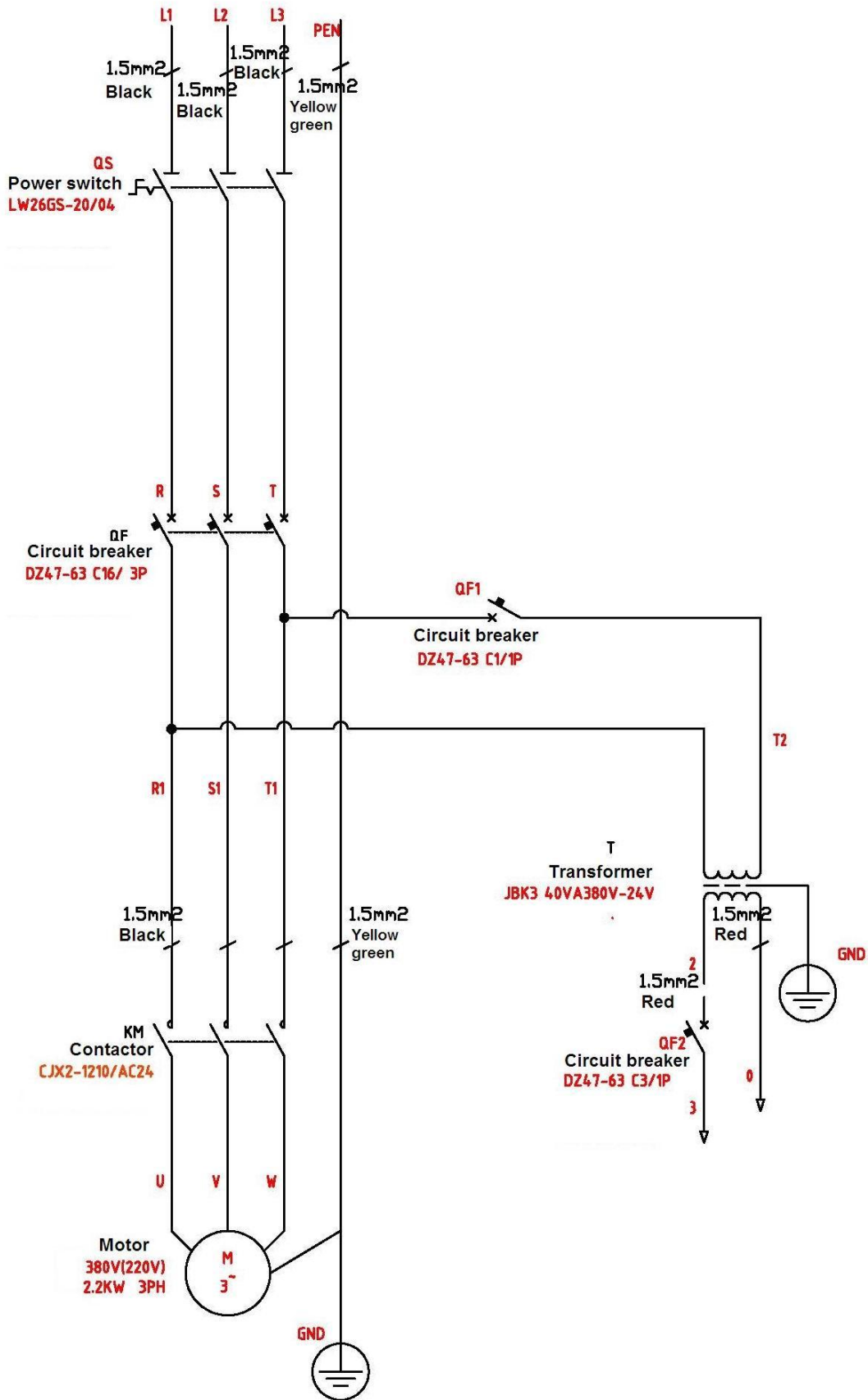
1. Main cylinder
2. Assistant cylinder
3. Manual unloading valve
4. Throttle valve
5. Motor
6. Coupling
7. Gear pump
8. Single-way valve
9. Overflow valve
10. Anti-surge valve
11. Cushion valve

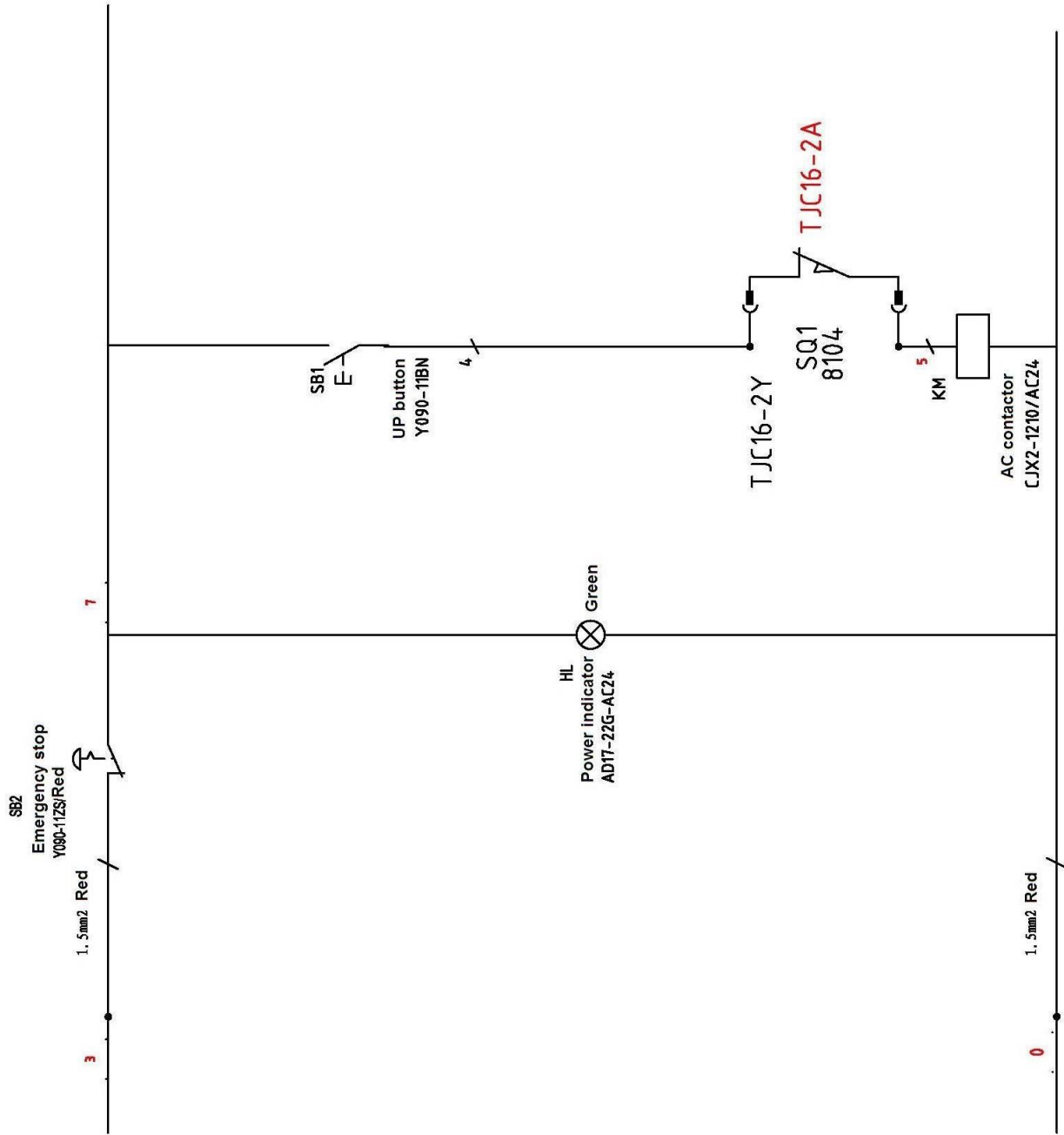
**Annex5 , Wiring diagram**

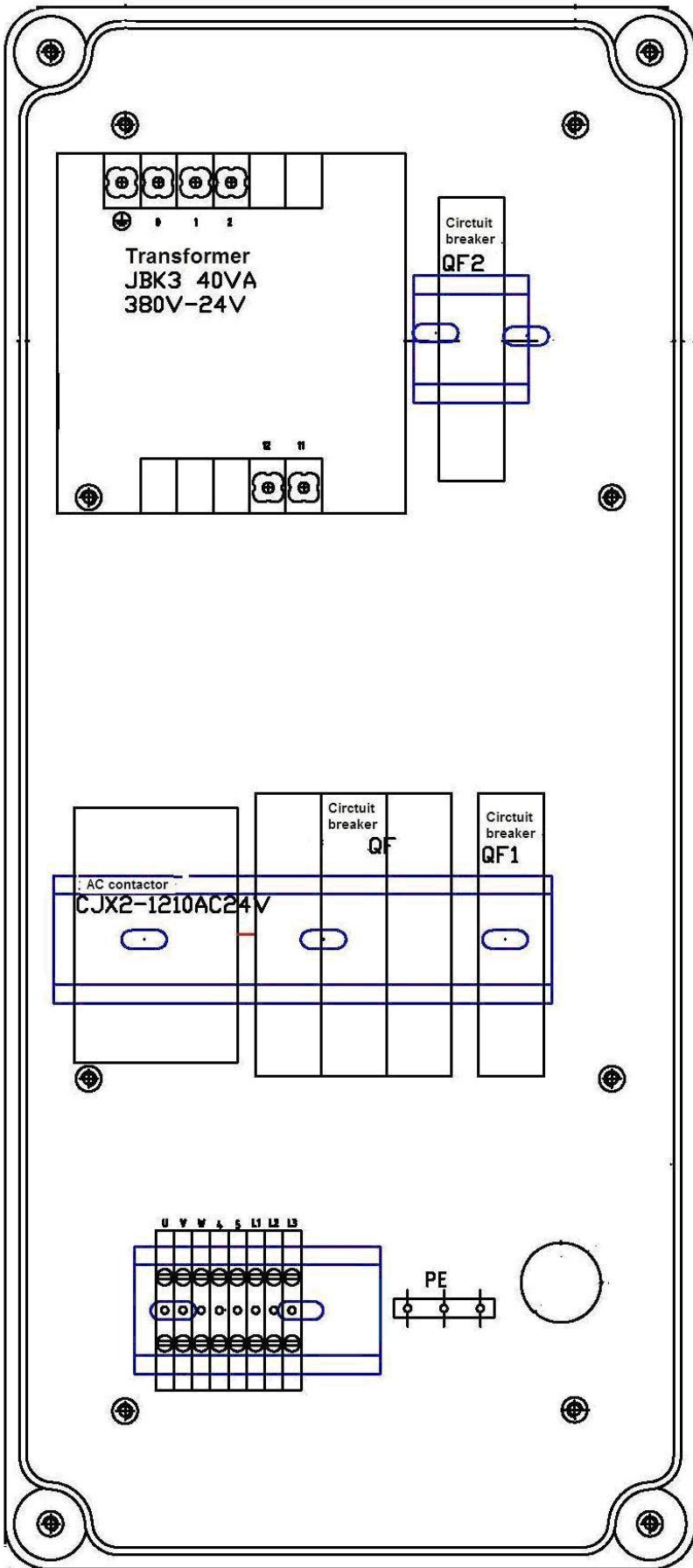
**Single phase**



Three phase





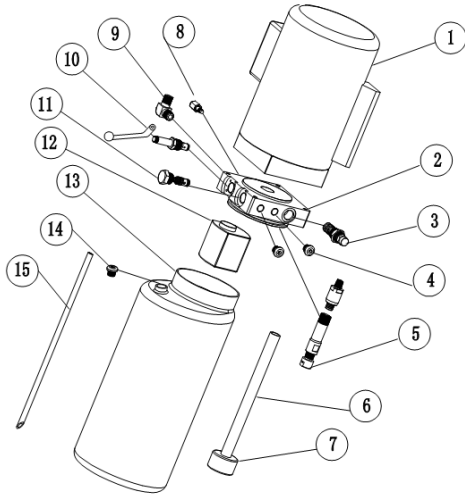




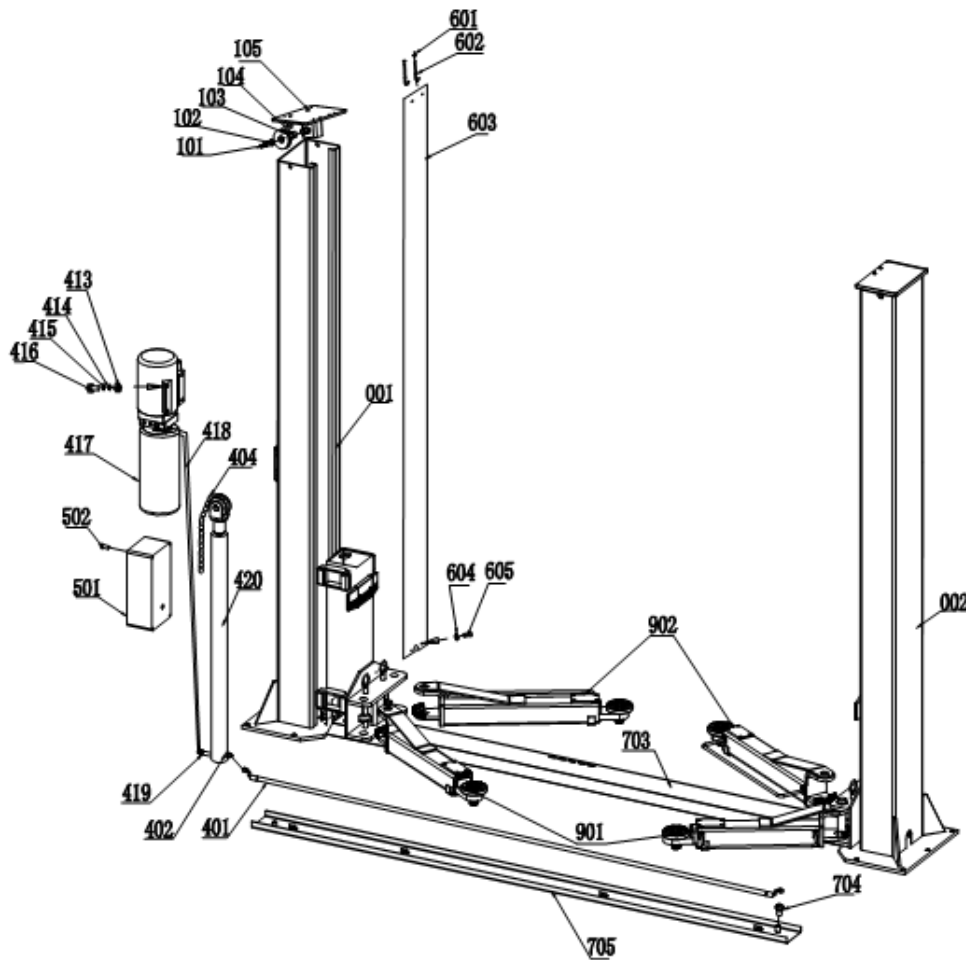
## VEHICLE LIFT SPECIALIST

### Annex 6 , Separate diagrams for the lift

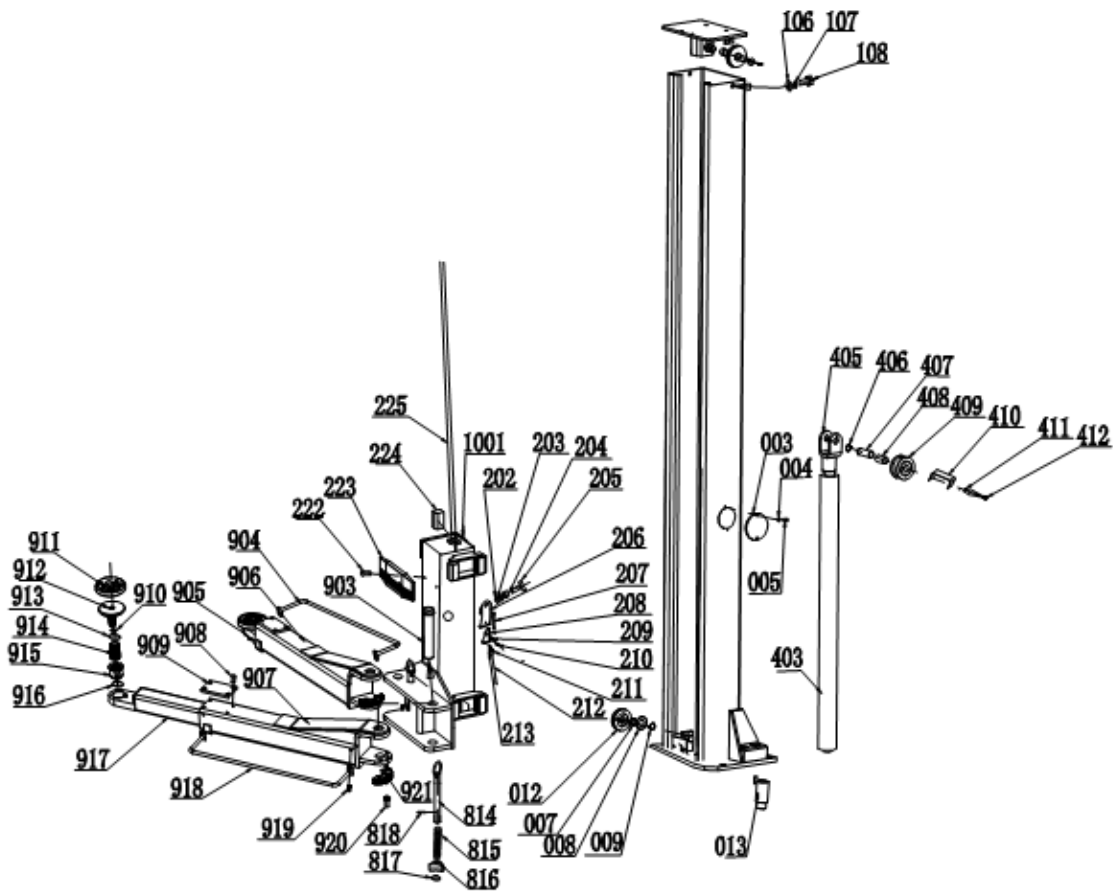
For the pump:



1	Motor	1
2	Hydraulic block	1
3	Overflow valve	1
4	Fitting	2
5	Cushion valve	1
6	Absorbing oil pipe	1
7	Oil filter	1
8	Throttle valve	1
9	Oil hose tie-in	1
10	Manual unloading valve	1
11	One way valve	1
12	Gear pump	1
13	Oil tank	1
14	Oil tank cover	1
15	Oil back pipe	1



# VEHICLE LIFT SPECIALIST



S/N	Material No.	Name	Drawing#/Size	Qty	Description	Remark
001	616001	Main post	EE-6254-A1-B1	1	Welding piece	
002	616002	Assistant post	EE-6254-A2-B2	1	Welding piece	
003	401014	Cover plate	EE-6254A-A1-B4	2	Q235A	
004	217001	Flat washer	M6	4	Standard piece	
005	215003	Screw	M6*8	4	Standard piece	
012	241063	Down wheel	EE-6254E-A1-B1	4	45#	
007	220001	Oil less bearing	SF-1 2512	4	Standard piece	
008	241014	Washer	EE-6254A-A1-B2	4	Q235A	
009	219002	Circlip for shaft	GB/894.1-1986 φ25	4	Standard piece	
13	241071	Height adapter	EE-6254E-A11	4	Welding piece	L=130mm
101	211001	Screw	M8*12	2	Standard piece	
102	401079	Screen	EE-6254A-A3-B3	2	Q235A	
103	241008	Upper wheel	EE-6254A-A3-B1	2	45#	
104	220002	Oil less bearing	SF-1 2518	2	Standard piece	
105	601004	Topper plate	EE-6254A-A3-B2	2	Welding piece	
106	217005	Flat washer	M12	4	Standard piece	
107	218005	Spring washer	M12	4	Standard piece	
108	212002	Bolt	M12*20	4	Standard piece	
1001	616003	Carriage	EE-6254-A7-B8	2	Welding piece	

## VEHICLE LIFT SPECIALIST





S/N	Material No.	Name	Drawing#/Size	Qty	Description	Remark
202	216009	Nut	M20	2	Standard piece	
203	218009	Spring washer	M20	2	Standard piece	
204	241011	Shaft casing	EE-6254A-A7-B3	2	Q235A	
205	212010	Bolt	M20*45	2	Standard piece	
206	241015	Safety latch	EE-6254A-A7-B4-C1	2	Welding piece	
207	241024	Spring	EE-6254A-A7-B2	2	Standard piece	
208	401030	Sliding board	EE-6254A-A7-B4-C1-	2	Q235A	
209	241031	Casing	EE-6254A-A7-B4-C1-	2	Q235A	
210	211002	Screw	M8*35	2	Standard piece	
211	241032	Adjusting spring	EE-6254A-A7-B4-C2	2	Standard piece	
212		Wire rope	EE-6254A-A7-B4-C3	2	Component	
213	214007	Screw M6*50		2	Standard piece	
814	241077	Pulling rod	EE-6254E-A2-B1	4	Welding piece	
815	255002	Spring	EE-6214F-A3-B5	4	Standard piece	
816	254016	Safety teeth	EE-6214F-A3-B3	4	Q235A	
817	219012	Circlip for shaft	22	4	Standard piece	
818	224054	Pin	5*35	4	Standard piece	
222	214003	Screw		4	Standard piece	
223	242002	Rubber pad	EE-6254A-A7-B10	2	Rubber	
224	242003	Sliding block	EE-6254A-A7-B1	16	Nylon 1010	
225	241021	Wire rope	EE-6254A-A6	2	Component	L=8785mm
901		Short arm	EE-6254E-A8	1	Component	
902		Long arm bracket	EE-6254E-A7	2	Component	
903	241069	Pin	EE-6254E-A12	4	Component	
904	603019	Foot protector	EE-6254S-A8-B5	2	Welding piece	
905	603008	Long extensive	EE-6254E-A7-B3	2	Welding piece	
906	603007	Long arm	EE-6254E-A7-B1	2	Welding piece	
907	603013	Short arm	EE-6254E-A8-B1	2	Welding piece	
908	214019	Screw	M8*10	16	Standard piece	
909	242018	Rubber pad	EE-6254E-A7-B2	4	Rubber	
910	219014	Circlip for shaft		4	Standard piece	
911	242014	Rubber pad	EE-6254E-A7-B4-C4	4	Rubber	
912	241077	Tray	EE-6254E-A7-B4-C1	4	Welding piece	
913	219015	Circlip for shaft		8	Standard piece	
914	241065	Casing	EE-6254E-A7-B4-C2	4	Q235A	
915	241064	Inner casing	EE-6254E-A7-B4-C3	4	Q235A	
916	219009	Circlip for shaft	GB/T894.1-1986	4	Standard piece	
917	603010	Short extensive	EE-6254E-A8-B2	2	Welding piece	
918	603018	Foot protector	EE-6254S-A9-B3	2	Welding piece	
919	211001	Screw	M8*12	8	Standard piece	
920	211074	Screw	M10*20	12	Standard piece	
921	254016	Half teeth block	EE-6214F-A4-B3	4	Q235A	
401	242004	Long oil hose	EE-6254E-A4-B2	1	Component	2880mm
402	241043	Short tie-in	EE-6254A-A5-B10	2	35#	Anti-surge valve
403	241002	Assistant cylinder	EE-6254A-A5-B4	1	Component	
404	241003	Leaf chain	LH1234-127	2	Component	
405	241005	Chain wheel seat	EE-6254A-A5-B1	2	Welding piece	
406	219002	Circlip for shaft	GB/T894.2-1986 25	4	Standard piece	
407	241009	Chain wheel	EE-6254A-A5-B2	2	45#	

## VEHICLE LIFT SPECIALIST

S/N	Material No.	Name	Drawing#/Size	Qty	Description	Remark
408	220003	Oil less bearing	SF-1 2548	2	Standard piece	
409	241010	Chain wheel	EE-6254A-A5-B3	2	45#	
410	241051	Screen board	EE-6254A-A5-B06	2	Q235A	
411	218002	Spring washer	M6	4	Standard piece	
412	211028	Screw	M6*20	4	Standard piece	
413	212008	Bolt	M10*30	4	Standard piece	
414	218004	Spring washer	M10	4	Standard piece	
415	217004	Flat washer	M10	4	Standard piece	
416	216005	Nut	M10	4	Standard piece	
417		Power unit	EE-6254A-A5-B6	1	Component	
418		Short oil hose	EE-6254A-A5-B7	1	Component	1300mm
419	241042	Long tie-in	EE-6214A-A5-B4	1	Component	
420	241001	Main cylinder	EE-6254A-A5-B5	1	Component	Anti-surge valve
501		Electrical system	EE-6254A-A4	1	Component	
502	215032	Screw	GB/T70.8-1885	4	Standard piece	
601	216003	Nut	M6	8	Standard piece	
602	241026	Chain protection	EE-6254A-A1-B6	4	Welding piece	
603	242009	Chain protection	EE-6254A-A1-B5	2	Cloth	
604	217001	Flat washer		8	Standard piece	
605	215003	Screw	M6*8	8	Standard piece	
703	403002	Cover plate	EE-6254E-A10	1	Q235A	
704	211066	Screw	GB/T70.3-2000	2	Standard piece	
705	603011	Bottom trough	EE-6254E-A9	1	Welding piece	

### Annex 7.Spare parts list

#### Spare parts list---electrical system

S/N	Material No.	Name	Spec.	Unit	Qty	Remark
1	321001	Power switch	LW26GS-20/04	Pcs	1	
2	322008	Button	Y090-11BN	Pcs	3	
3	324021	Power indicator	AD17-22G-AC24	Pcs	1	
4	320009	Transformer	JBK-40VA220V-24V	Pcs	1	Same outlook as item 7
5	320098	Transformer	JBK-40VA230V-24V	Pcs	1	Same outlook as item 7
6	320054	Transformer	JBK-40VA240V-24V	Pcs	1	Same outlook as item 7
7	320057	Transfomer	JBK-40VA380V-24V	Pcs	1	

## VEHICLE LIFT SPECIALIST

S/N	Material No.	Name	Spec.	Unit	Qty	Remark
8	320090	Transformer	JBK-40VA400V-24V	Pcs	1	Same outlook as item 7
9	320061	Transformer	JBK-40VA415V-24V	Pcs	1	Same outlook as item 7
10	330004	AC contactor	CJX2-1210/AC24	Pcs	1	
11	327004	Circuit breaker	DZ47-63 C16 /3P	Pcs	1	
12	327002	Circuit breaker	DZ47-63 C32 /2P	Pcs	1	
13	327003	Circuit breaker	DZ47-63 C1 /1P	Pcs	1	
14	327010	Circuit breaker	DZ47-63 C3 /1P	Pcs	1	Same outlook as item 13
15	321024	Limit switch	ME8104	Pcs	1	
16	336012	Bridge rectifier	KBPC5A-35A	Pcs	1	
17	335007	Fuse	4700UF/50V	Pcs	1	
18	328021	Conntol box	Big one	Pcs	1	

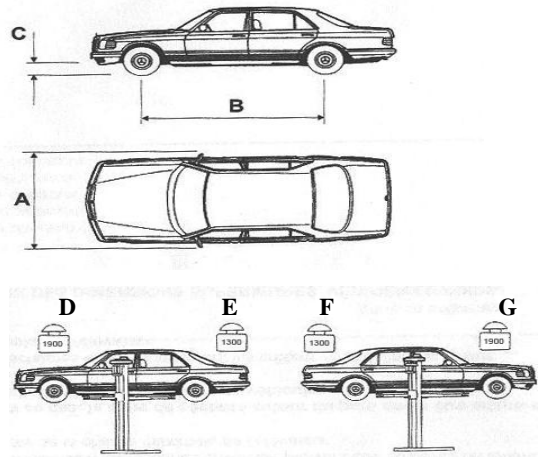
Spare parts list---machine part

S/N	Drawing#	Name	Q'ty	Description	Remark
13	EE-6254E-A11	Height adapter	4	Welding piece	L=130mm
814	EE-6254E-A2-B1	Pulling rod	4	Welding piece	
815	EE-6214F-A3-B5	Spring	4	Standard piece	
816	EE-6214F-A3-B3	Safety teeth	4	Q235A	
817		Circlip for shaft 22	4	Standard piece	
223	EE-6254A-A7-B10	Rubber pad	2	Rubber	
224	EE-6254A-A7-B1	Sliding block	16	Nylon 1010	
225	EE-6254A-A6	Wire rope	2	Component	L=8785mm
909	EE-6254E-A7-B2	Rubber pad	4	Rubber	
911	EE-6254E-A7-B4-C4	Rubber pad	4	Rubber	
401	EE-6254E-A4-B2	Long oil hose	1	Component	2880mm
418	EE-6254A-A5-B7	Short oil hose	1	Component	1300mm
603	EE-6254A-A1-B5	Chain protection	2	Cloth	
602	EE-6254A-A1-B6	Chain protection hook	4	Standard piece	

Annex8 , Size and weight requirements for the

Model No.	A (mm)	B (mm)	C (mm)	D (T)	E (T)	F (T)	G (T)
EE-6253	2400	2900	100	1.9	1.3	1.3	1.9
EE-6254	2400	2900	100	2.3	1.9	2.3	1.9

vehicle



Profile of hydraulic block

