

# 6213E/6214E

Clear Floor Two Post Lift Electrical Release  
Lifting Capacity: 3200KG/4000 KG

## INSTALLATION, OPERATION AND MAINTENANCE MANUAL



Read this entire manual carefully and completely before installation or operation of the lift.

## INDEX

**1. Important safety instructions.....3~4**

- 1.1 Important notices
- 1.2 Qualified personnel
- 1.3 Danger notices
- 1.4 Warning signs
- 1.5 Sound level
- 1.6 Training

**2. Overview of the lift.....5**

- 2.1 General descriptions
- 2.2 Technical data
- 2.3 Construction of the lift

**3. Installation instructions.....6~9**

- 3.1 Preparations before installation
  - 3.1.1 Tools and equipments needed
  - 3.1.2 A list for parts checking
  - 3.1.3 Ground conditions
- 3.2 Precautions for installation
- 3.3 Installation
- 3.4 Items to be checked after installation

**4. Operation instructions.....10~12**

- 4.1 Precautions
- 4.2 Descriptions of control box
- 4.3 Flow chart for operation
- 4.4 Operating instructions
- 4.5 Emergency lowering in case of no power

**5. Trouble shooting..... 13**

**6. Maintenance.....14**

**7. Annex.....15~29**

- Annex1, Packing list of the whole lift
- Annex2, Overall diagram
- Annex3, Diagram for ground fixing
- Annex4, Hydraulic working system
- Annex5, Wiring diagram
- Annex6, Separate diagrams for the lift
- Annex7, Spare parts list
- Annex8, Size and weight requirements on vehicles

**1.Important safety instructions**

- 1.1 Important notices

## VEHICLE LIFT SPECIALIST

Ever-Eternal will offer one-year's quality warranty for the whole machine , during which any quality problem will be properly solved to the user's satisfaction. However, we will not take any responsibility for whatever bad consequence resulted from improper installation and operation, overload running or unqualified ground condition.

This 2-posts lift is specially designed for lifting motor vehicles that weighs within its outmost lifting capacity. Users are not allowed to use it for any other purposes. Otherwise, we, as well as our sales agency, will not bear any responsibility for accidents or damages of the lift. Make sure to pay careful attention to the label of the lifting capacity attached on the lift and never try to lift cars with its weight beyond.

Read this manual carefully before operating the machine so as to avoid economic loss or personnel casualty incurred by wrong operation.

Without our professional advice, users are not permitted to make any modification to the control unit or whatever mechanical unit.

### 1.2 Qualified personnel

1.2.1 Only these qualified staff, who have been properly trained, can operate the lift.

1.2.2 Electrical connection must be done by a competent electrician.

1.2.3 People who are not concerned are not allowed in the lifting area.

### 1.3 Danger notices

1.3.1 Do not install the lift on any asphalt surface.

1.3.2 Read and understand all safety warnings before operating the lift.

1.3.3 The lift, if is not specially designed upon customer's request, is not fit for outdoor use.

1.3.4 Keep hands and feet away from any moving parts. Keep feet clear of the lift when lowering.

1.3.5 Only these qualified people, who have been properly trained, can operate the lift.

1.3.6 Do not wear unfit clothes such as large clothes with flounces, tires, etc, which could be caught by moving parts of the lift.

1.3.7 To prevent evitable incidents, surrounding areas of the lift must be tidy and with nothing unconcerned.

1.3.8 The lift is simply designed to lift the entire body of vehicles, with its maximum weight within the lifting capacity.

1.3.9 Always insure the safety latches are engaged before any attempt to work near or under the vehicle.

1.3.10 Make sure to place the lifting pads to the positions as suggested by vehicle makers and when gradually lift the vehicle to the desired height, operators should be certain that the vehicle will not slant, roll-over or slide in lifting process.

1.3.11 Check at any time the parts of the lift to ensure the agility of moving parts and the performance of synchronization. Ensure regular maintenance and if anything abnormal occurs, stop using the lift immediately and contact our dealers for help.

1.3.12 Lower the lift to its lowest position and do remember to cut off the power source when service finishes.

1.3.13 Do not modify any parts of the lift without manufacturer's advice.

1.3.14 If the lift is going to be left unused for a long time, users are required to:

- a. Disconnect the power source;
- b. Empty the oil tank;
- c. Lubricate the moving parts with hydraulic oil.

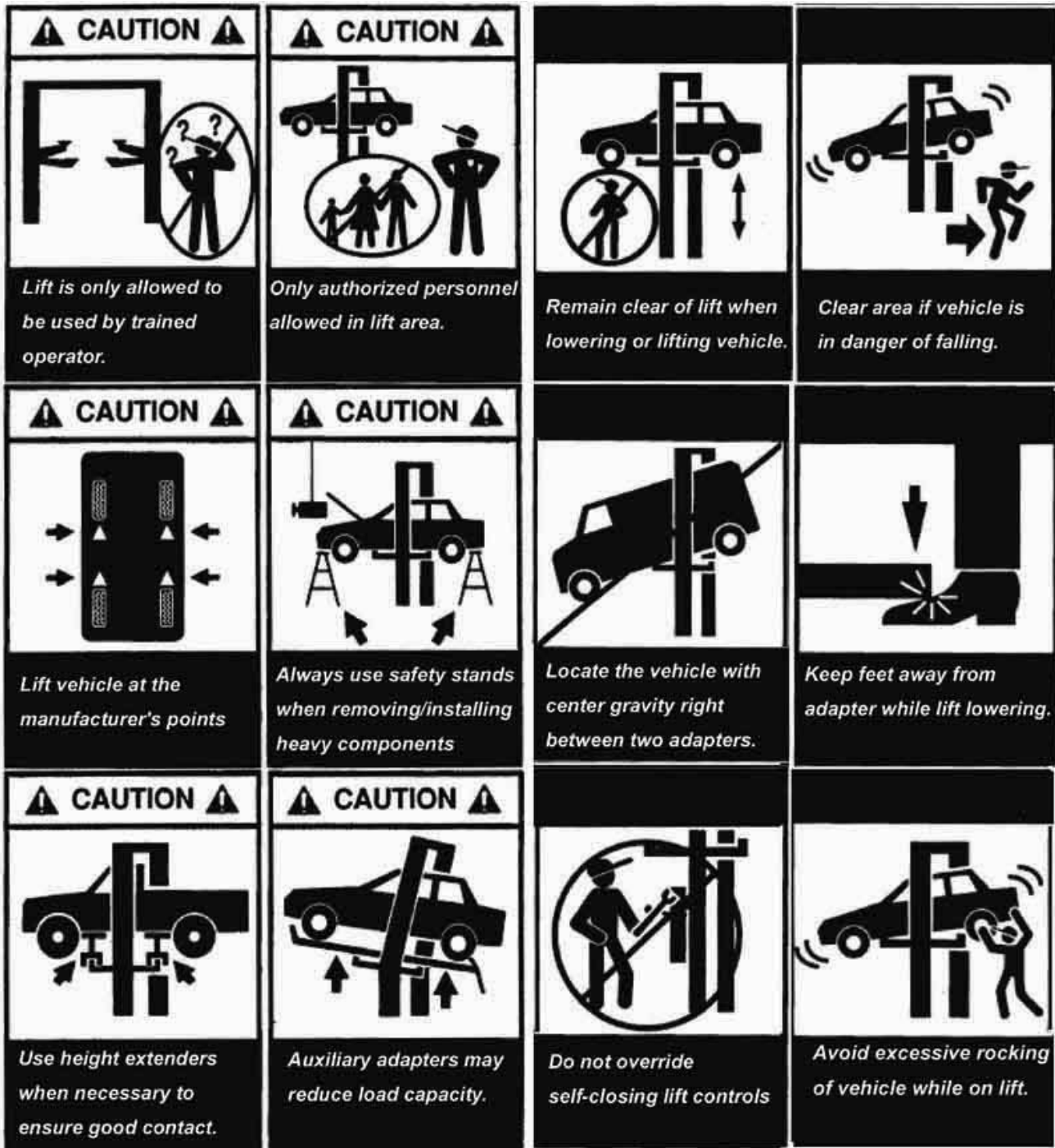
**Attention: For environment protection, please dispose the disused oil in a proper way.**

### 1.4 Warning signs

All safety warning signs attached on the machine are for the purpose of drawing the user's attention to safety operation.

## VEHICLE LIFT SPECIALIST

The labels must be kept clean and need to be replaced when they are worn-out or have dropped. Read the explanations of the labels carefully and try to memorize them.



### 1.5 Sound Level

The sound emitted from the lift should not exceed 75DB. For the sake of your health, we suggest putting a noise detector in your working area.

### 1.6 Training

Only these qualified people, who have been properly trained, can operate the lift. We are quite willing to provide professional training for the users when necessary.

## 2. Overview of the lift

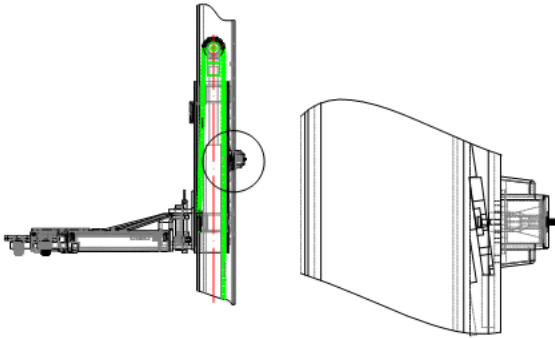
### 2.1 General descriptions

## VEHICLE LIFT SPECIALIST

This clear- floor two posts lift is composed of posts, carriages, lifting arms, cylinders and motor unit, etc.

The lift is driven by an electro-hydraulic system. The gear pump delivers hydraulic oil to oil cylinders and pushes upwards its piston. The piston drives the chain to raise the carriage and the lifting arms. During lifting process, the safety teeth will automatically and firmly bite with the safety rod in the posts. Therefore, no slipping will happen in case the hydraulic system beaks down.

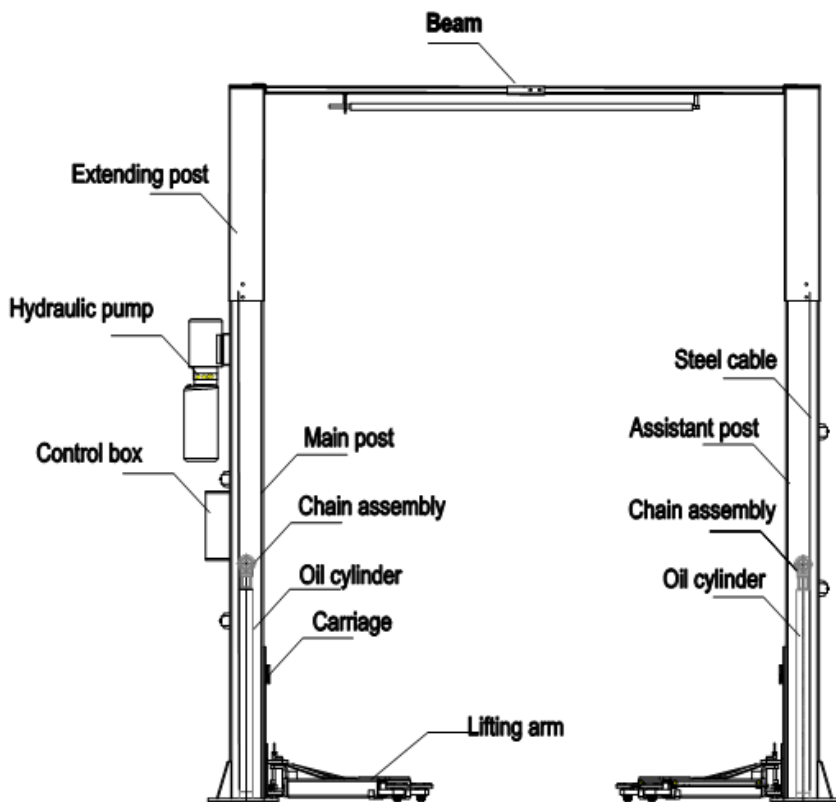
Safety structure:



### 2.2 Technical data

Model	Lifting capacity	Lifting time	Lifting height	Height	Width	Width between posts
EE-6213E	3200kg	55 Sec	1900mm	3882mm	3420mm	2830mm
EE-6214E	4000kg	55 Sec	1900mm	2882mm	3420mm	2830mm

### 2.3 Construction of the lift



## 3. Installation instructions

### 3.1 Preparations before installation

### 3.1.1 Tools and equipments needed

- ✓ Appropriate lifting equipment
- ✓ Anti-abrasion hydraulic oil.
- ✓ Rotary Hammer Drill with 3/4" drill bit.
- ✓ Chalk and tape measure, magnetic plump, 8 metersΦ15 level pipe.
- ✓ Sockets and open wrenches, a set of inside hex wrenches, cross and straight screw drivers.
- ✓ Hammer, 4pounds, sharp nose pliers, Φ17,Φ19,Φ22 socket spanners.

### 3.1.2 List for parts checking ---Annex 1 ( Packing list )

Unfold the package and check if any parts missed as per Annex 1. Do not hesitate to contact us in case any parts missed, but if you do not contact us and insist installing upon the lack of some parts, Ever-eternal as well as our dealers will not bear any responsibility for this and will charge for any parts subsequently demanded by the buyer.

### 3.1.3 Ground conditions

The lift should be fixed on a smooth and solid concrete ground with its strength more than 3000psi, tolerance of flatness less than 5mm and minimum thickness of 200mm. In addition, newly built concrete ground must undergo more than 28days' cure and reinforcement.

## 3.2 Precautions for installation

3.2.1 Make sure the two posts stand paralleled and are vertical to the ground. No slanting.

3.2.2 Joints of oil hose and steel cable must be firmly connected in order to avoid the looseness of steel cable and leakage of oil hose.

3.2.3 All bolts should be firmly screwed up.

3.2.4 Do not place any vehicle on the lift in the case of trial running.

## 3.3 Installation



**Step 1: Remove the packaging, take out the carton for accessories.**

**Step 2 : Firstly, put something supporting between the two posts or suspend one of the posts by a crane and then remove the bolts on the package.**

**Attention :** Please pay special attention not to let the post fall down for it may cause casualty or bring damages to the accessories fixed in the post.

**Step 3 : When the first post has been taken away, place something supporter under the second post and then remove the bolts on the package.**

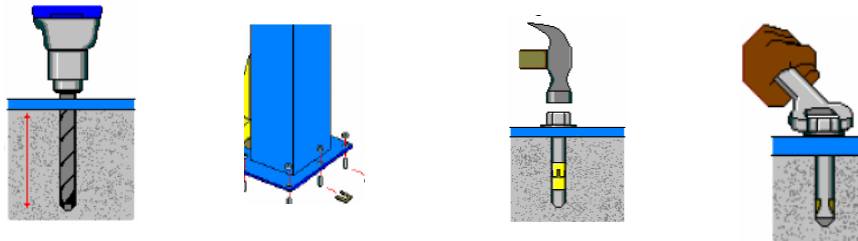
**Step 4: Fix the standing position for the two posts with a width of 2830mm between them.**

1. Unfold the package and decide on which post the power unit will be mounted.
2. Draw an outline of the two base plates on the ground with chalk and tape measure and ascertain the position for the post.

## VEHICLE LIFT SPECIALIST

**Step 5: Erect and secure the post, main post (the post on which the control box and pump assembly will be mounted) first and then the assistant post.**

1. Firstly have the extending small post firmly secured on to the body posts with properly bolts.
2. Drill anchor holes for each expansion bolt on the ground with an electrical drill. Make sure to drill vertically.
3. After holes have been drilled, remove thoroughly the debris and dust in them and ascertain that the posts stay right upon the circle previously drew by chalk.
4. In case the base of the post and the surface of the ground were not as smooth as required, insert a piece of washer (with proper thickness) under the base of the post to ensure the smoothness and the verticality of the post. Secure the post with expansion bolts thereafter.
5. Erect and secure the assistant post similarly as per step, 1, 2, and 3.
6. Use proper lifting equipments to have the cross beam lifted onto the top of the two posts and then secure it with proper bolts.

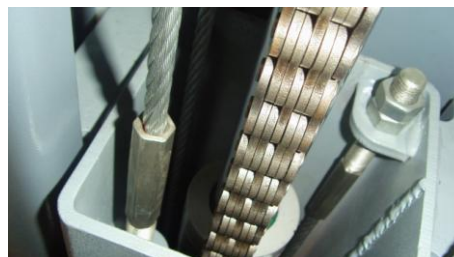
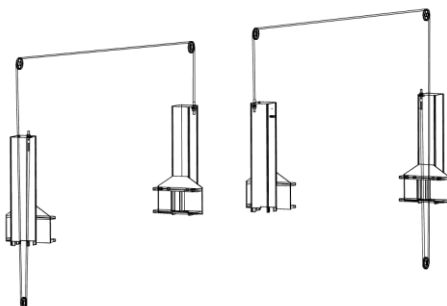


**Step6: Fix the four safety blocks, four pieces of electric magnet and their protectors.**



**Step7: Connect the Steel cable.**

1. Raise carriages on both sides approximately 800mm above the ground.
2. Make sure that the safety locks on each column are fully engaged before attempting to route steel cables.
3. Carriages must be on the same height from the floor before proceeding.
4. Install according to the following diagram of steel cable connection.
5. After the steel cable has been fixed, adjust and make the cable at both sides be with the same tightness which could be judged by the sound emitted during lifting process. If currently installers can not ascertain, they can make adjustment in trial running process.
6. Grease the steel cable and chain after they have been fixed. (It is a must.)

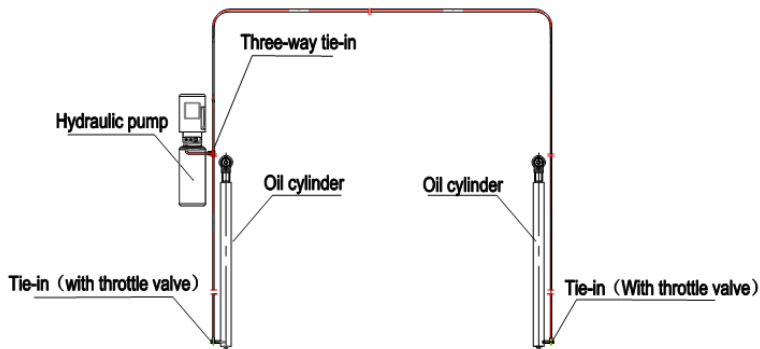


Bolt to adjust the tightness of steel cable

**Step8: Connect the oil**

hose.

1. Connect the oil hose as per the following diagram.
2. Make sure all hose ends are clean.

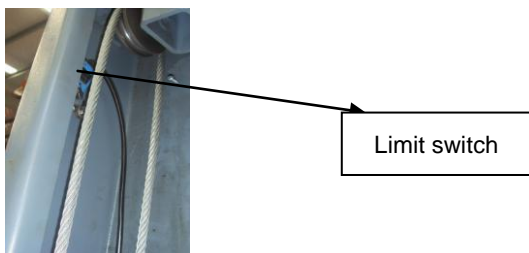


**Step9: Mount the power unit and the control box.**

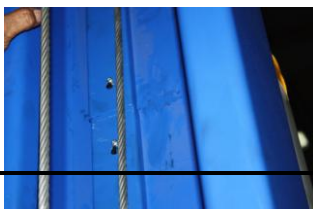
1. Mount the power unit onto the main post.
2. Connect the power unit with the control box as per the wiring diagram.



3. Connect the limit switch.

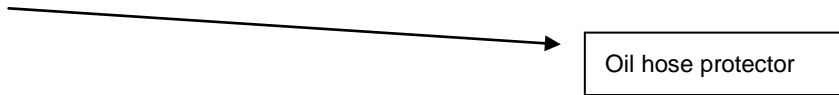


**Step10: Install the oil hose protector.**



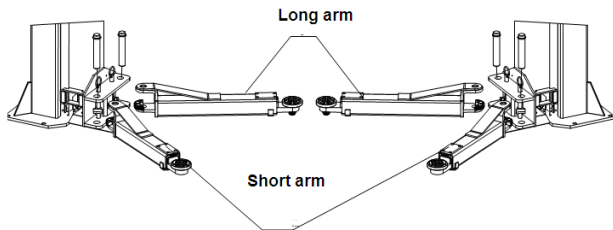


## VEHICLE LIFT SPECIALIST



### Step11: Install the lifting arms.

Connect the lifting arm and the carriage by pins. Install the swing arms on the carriages and make sure the safety lock and safety teeth are well matched.



### Step12: Fill with hydraulic oil

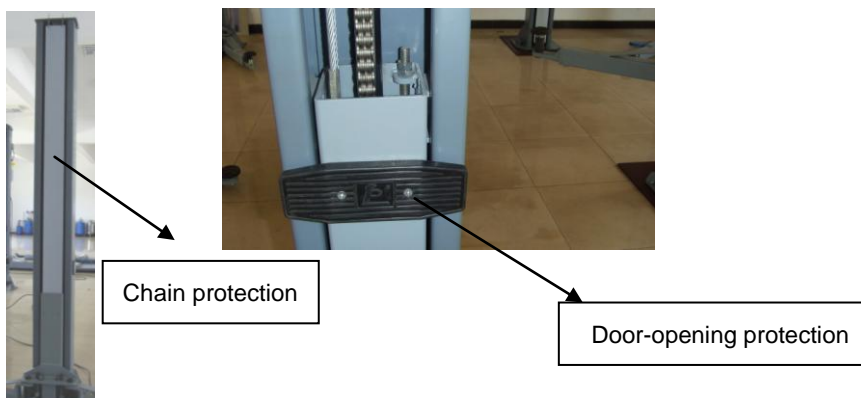
The volume of oil tank is 10L. To insure the lift work normally, the amount of oil in it should reach 4/5 of the tank's total volume. 32#anti-abrasion hydraulic oil for winter, 46# for summer.



### Step13: Trial running.

1. Do refer to the operation instructions in advance and keep in mind that no vehicle left on the lift in the process of trial running.
2. Check if all the connections are in good condition.

### Step 14: Install the chain protection and door-opening protection.



### 3.4 Items to be checked after installation.

S/N	Check items	YES	NO
1	Are the posts vertical to the floor?		
2	Are the two posts paralleled?		
3	Is the oil hose well connected?		

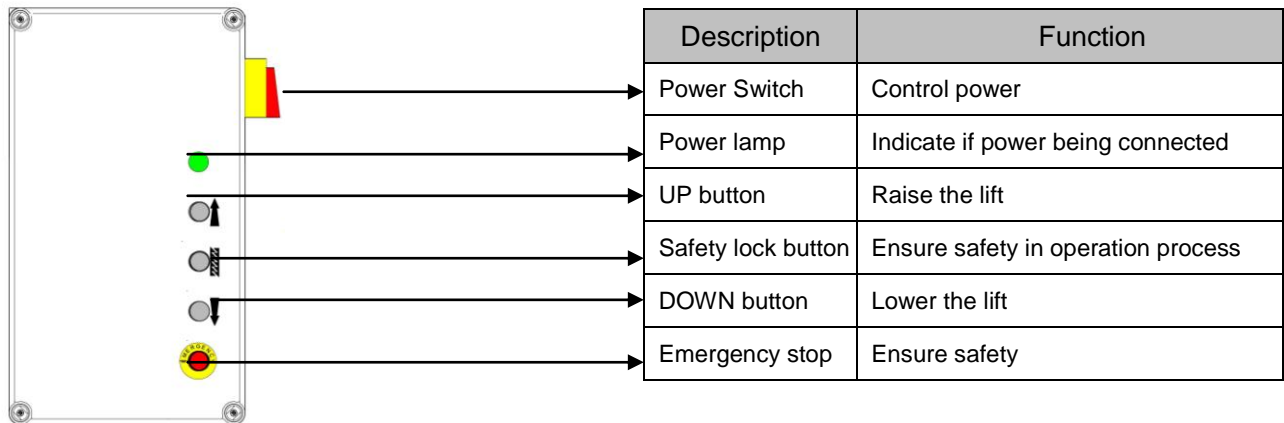
4	Is the steel cable well connected?		
5	Are all lifting arms well fixed?		
6	Are electrical connections right?		
7	Are the rest joints firmly screwed?		
8	Are all items need lubricating added with grease?		

### 4. Operation instructions

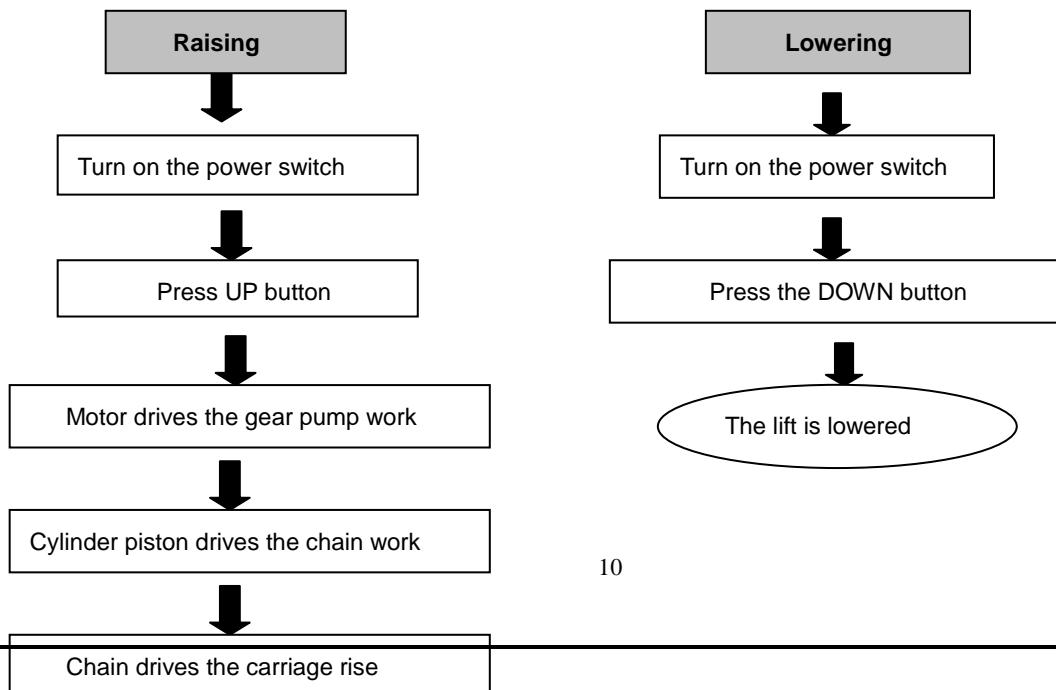
#### 4.1 Precautions

- 4.1.1 Check all the joints of oil hose. Only when there is no leakage, the lift can start work.
- 4.1.2 The lift, if its safety device malfunctions, shall not be used.
- 4.1.3 The machine shall not lift or lower an automobile if its center of gravity is not positioned midway of the lifting arms. Otherwise, the Ever-Eternal as well as our dealers will not bear any responsibility for any consequence resulted thereby.
- 4.1.4 Operators and other personnel concerned should stand in a safety area during lifting and lowering process.
- 4.1.5 When lifting arms rise to the desired height, switch off the power at once to prevent any mal-operation done by unconcerned people.
- 4.1.6. Make sure the safety lock of the lift is engaged before start working under the vehicle and no people under the vehicle during lifting and lowering process.

#### 4.2 Descriptions of control box



#### 4.3 Flow chart for operation



## 4.4 Operation instructions

### Raise the lift

1. Make sure that you have read and understood the operation manual before operation.
2. Park the vehicle between two posts.
3. Adjust the lifting arms until they reach the supporting positions of the vehicle and make sure the gravity of vehicle located in the center of four lifting arms.
4. Switch on and insure to operate as per requirements on the nameplate attached.
5. Press the "UP" button on the control box until pads of lifting arms touched the prop-position of vehicle.
6. Keep on raising the vehicle to let it have a bit clearance from the ground and check again its stability.
7. Raise the vehicle to the desired height, check it is safe or not, press the "Safety Lock" button on the control panel to have the safety lock engaged, turn off the emergency stop and then perform maintenance or repair work underneath.

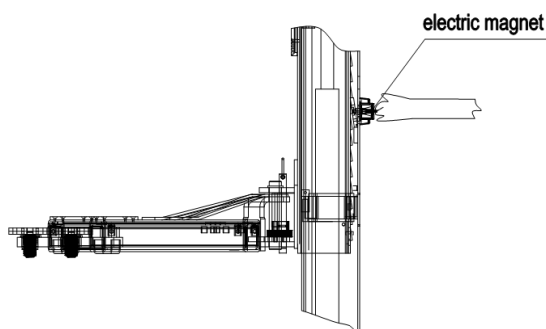
### Lower the lift

1. Switch on.
2. Press the DOWN button on the control box. Meanwhile the lifting arms automatically go upwards about 5CM which releases the safety lock and makes the electric magnetic unloading valve start working. Then the lifting arms lower accordingly.
3. After the lifting arms lower to the lowest position, pull them to the horizontal position and clear up all the obstacles.
4. Drive the vehicle away.

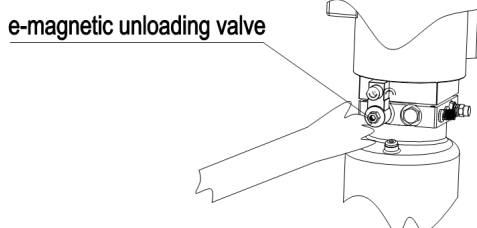
## 4.5 Emergency lowering in case of no power

The carriage is not engaged:

- a. Draw out at the same time the four pieces of electric magnet installed in the two posts.

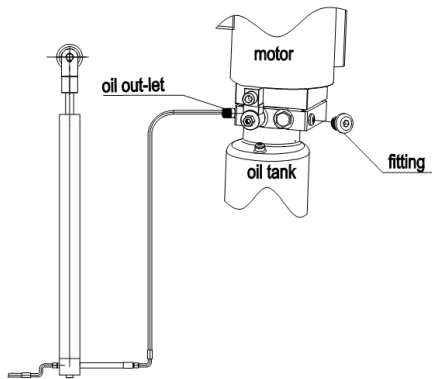


- b. Screw loose the e-magnetic unloading valve to lower the carriage.



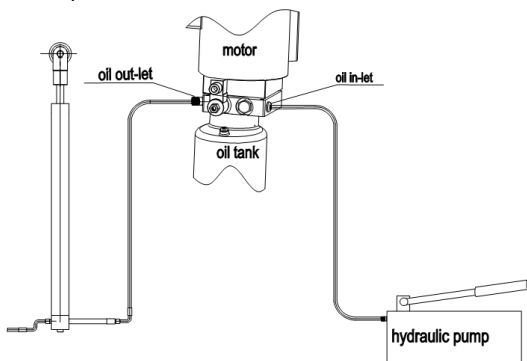
The carriage is engaged:

- a. Screw off the fitting (opposite to the oil out-let) to connect the manual hydraulic pump.

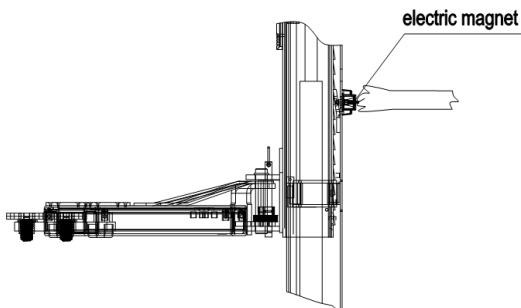


- b. Press the handle of the hydraulic pump to supply oil to the cylinder and to release the lock.

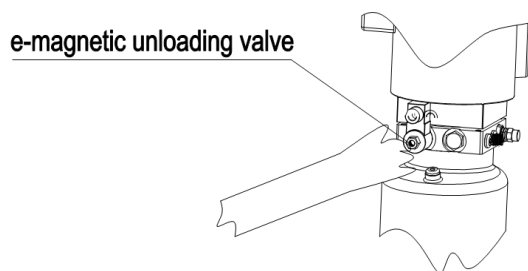
(Note that this hydraulic pump is not an essential part of our lift and we will make extra charge if buyers want to buy one from us.)



- c. Draw out at the same time the four pieces of electric magnet installed in the two posts.



- d. Screw loose the e-magnetic unloading valve to lower the carriage.



## 5. Trouble Shooting

ATTENTION: If the trouble could not be fixed by yourself, please do not hesitate to contact us for help .We will offer our service at the earliest time we can. By the way, your troubles will be judged and solved much faster if you could provide us more details or pictures of the trouble.

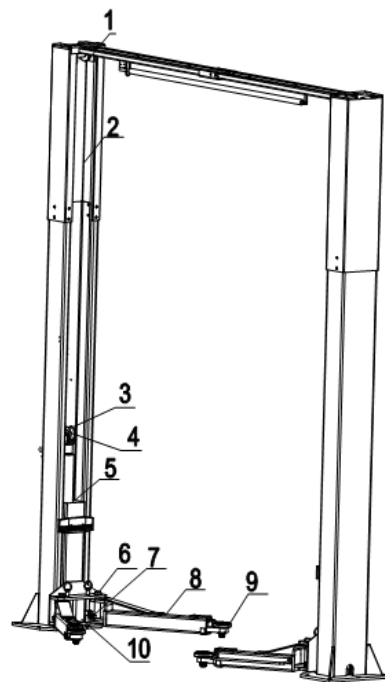
TROUBLES	CAUSE	SOLUTION
Abnormal noise	Abrasion exists on insider surface of the posts.	Grease the inside of the post.
	Trash in the post.	Clear the trash
Motor does not run and will not rise	The wire connection is loose.	Check and make a good connection.
	The motor is blown.	Replace it.
	The limit switch is damaged or the wire connection is loose.	Connect it or adjust or replace the limit switch.
Motor runs but will not raise	The motor run reversely.	Check the wire connection.
	Overflow valve is loose or jammed.	Clean or adjust it.
	The gear pump is damaged.	Replace it.
	Oil level is too low.	Add oil.
	The oil hose became loose or dropped off.	Tighten it.
	The cushion valve became loose or jammed.	Clean or adjusts it.
Carriages go down slowly after being raised	The oil hose leaks.	Check or replace it.
	The oil cylinder is not tightened.	Replace the seal.
	The single valve leaks.	Clean or replace it.
	E-magnetic valve fails to work well.	Clean or replace it.
	Steel cable is loose or not with same tightness	Check and adjust the tightness.
Raising too slow	The oil filter is jammed.	Clean or replace it.
	Oil level is too low.	Add oil.
	The overflow valve is not adjusted to the right position.	Adjust it.
	The hydraulic oil is too hot ( above 45° ) .	Change the oil.
	The seal of the cylinder is abraded.	Replace the seal.
	Inside surface of the posts is not well greased.	Add grease.
Lowering too slow	The throttle valve jammed.	Clean or replace.
	The hydraulic oil is dirty.	Change the oil.
	The anti-surge valve jammed.	Clean it.
	The oil hose jammed.	Replace it.
The steel cable is abraded	No grease when installation or out of lifetime	Replace it.

## 6. Maintenance

Easy and low cost routine maintenance can ensure the lift work normally and safely. Following are requirements for routine maintenance. You may choose the frequency of routine maintenance by consulting your lift's working conditions and frequency.

THE FOLLOWING PARTS NEED LUBRICATING

S/N	Description
1	Upper wheel
2	Steel cable
3	Chain wheel
4	Chain
5	Sliding block
6	Pin
7	Arm lock
8	Lifting arm
9	Tray
10	Down wheel



### 6.1. Daily checking items before operation

The user must perform daily check. Daily check of safety latch system is very important – the discovery of device failure before action could save your time and prevent you from great loss, injury or casualty.

- Before operation, judge whether the safety latch is engaged by sound.
- Check whether oil hose well connected and whether it leaks or not.
- Check the connections of chain and steel cable and check the power unit.
- Check whether expansion bolts are firmly screwed.
- Check if safety teeth and safety block matched well or not.

### 6.2. Weekly checking items

- Check the flexibility of moving parts.
- Check the working conditions of safety parts.
- Check the amount of oil left in the oil tank. Oil is enough if the carriage can be raised to highest position. Otherwise, oil is insufficient.
- Check whether expansion bolts are firmly screwed.

### 6.3. Monthly checking items

## VEHICLE LIFT SPECIALIST

- Check whether expansion bolt s firmly screwed.
- Check the tightness of the hydraulic system and screw firm the joints if it leaks.
- Check the lubrication and abrasion circumstance of axial pins, carriages, lifting arms and other related parts and replace in time with new ones if they failed to work well.
- Check the lubrication and abrasion circumstance of Steel cable.

### 6.4. Yearly checking items

- Empty the oil tank and check the quality of hydraulic oil.
- Wash and clean the oil filter.

**If users strictly follow the above maintenance requirements, the lift will keep in a good working condition and meanwhile accidents could be avoided to a large extent.**

## 7. ANNEX

### Annex 1, Packing List of the whole lift

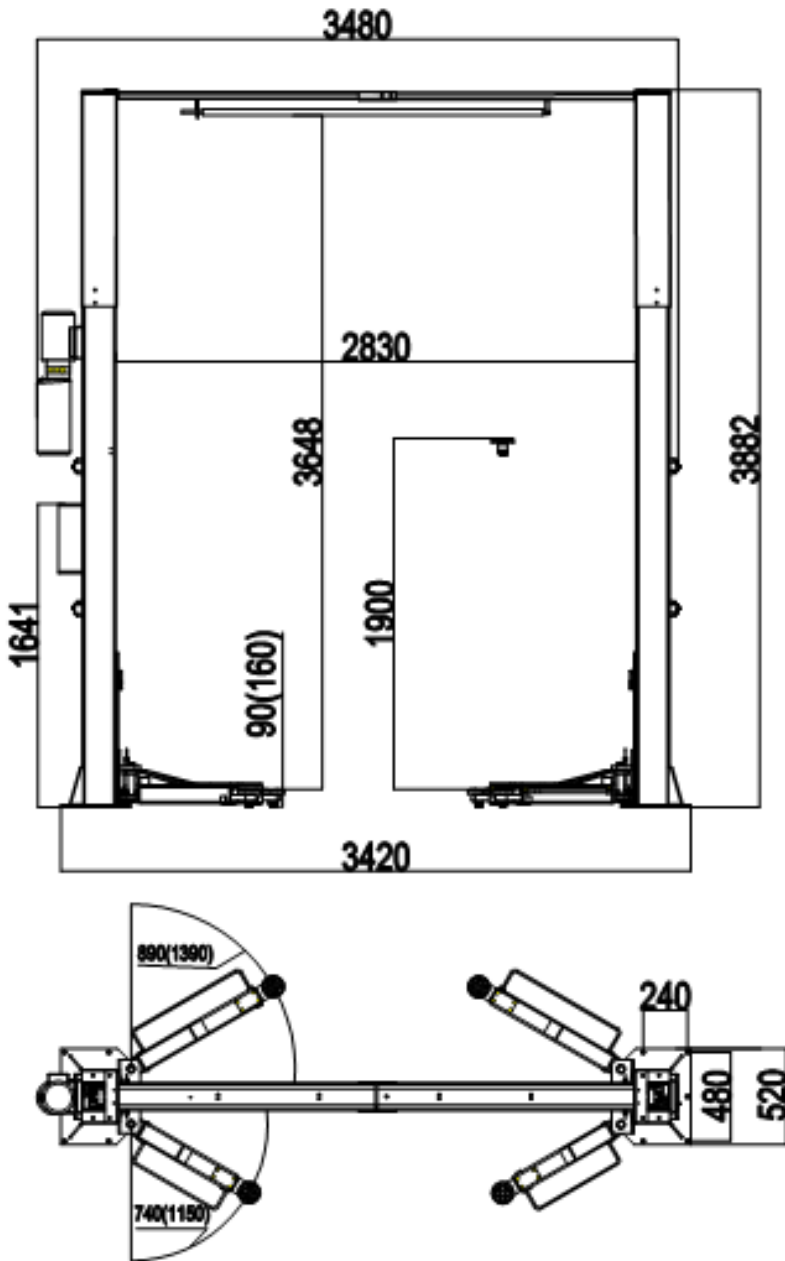
S/N	Name	Drawing#/size	Description	Qty
1	Two posts	6214E-A1	Assembly	1
2	Carriages	6254E-A2	Assembly	
3	Pump assembly	6254-B5-B6	Assembly	1
4	Oil cylinder	6254-A5-B4	Assembly	2
5	Electrical system	6254E-A5	Assembly	1
6	Control box		Assembly	1
7	Package for magnets		Assembly	1
8	Steel cable	6214-A6 L=10840	Assembly	2
9	Long arm	6254E-A7	Assembly	2
10	Extending post	6214-A20	Q235-A	2
11	Cross beam (inside)	6214-A21-B2	Welding	1
12	Short arm	6254E-A8	Assembly	2
13	Cross beam (outside)	6214-A21-B4	Welding	1
14	Packing frame (right)	6254E-A30-B1	Welding	1
15	Packing frame(left)	6254E-A30-B2	Welding	1
16	Long rod (with seam)	6214-A21-B5	Q235-A	1
17.The carton includes the following				
	Tray assembly	6254E-A7-B4	Assembly	4
	Long arm fender	6254-A7-B5	Assembly	2
	Short arm fender	6254S-A9-B3	Welding	2
	Height adapter	6254E-A11	Q235A	4
	Pin	6214F-A12	Assembly	4
	Safety plate	6254E-A13	45	4
	E-magnet	6254E-A14		4
	Cover for e-magnet	6254E-A15	ABS	4
	Orientation block	6254E-A17	Q235A	4
	Wire cover	6254E-A18	Q235A	6
	Chain protection	6214-A1-B3		2
	Pulling rod	6254-A1-B6	Welding	4
	Short oil hose L=220	6214-B5-B1		1
	Long rod supporter	6214-A21-B1	Welding	1
	Oil hose fixer		Q235A	6
	Rubber door-opening protection	6254-A7-B10	Rubber	2

## VEHICLE LIFT SPECIALIST

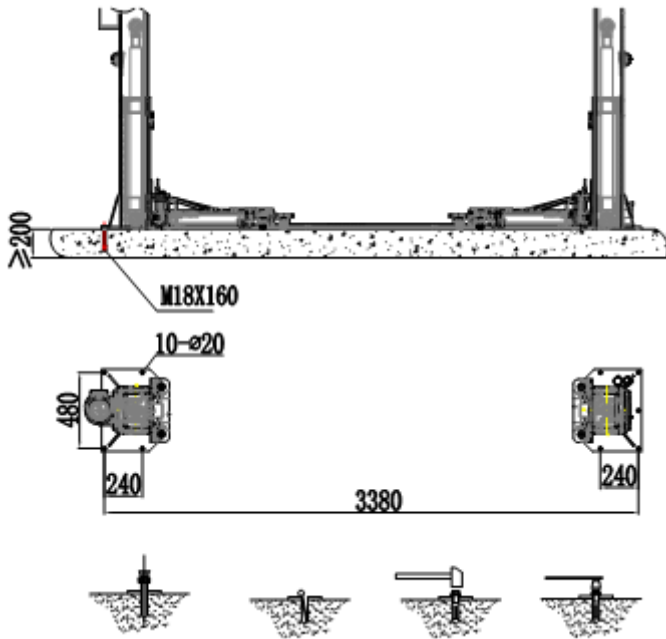
S/N	Name	Drawing#/size	Description	Qty
	Outside hex bolt	M10*30	Standard	4
	Outside hex bolt	M14*25	Standard	21
	Outside hex bolt	M6*35	Standard	1
	Inside hex bolt	M8*12	Standard	8
	Cross round head bolt	M5*10	Standard	24
	Cross round head bolt	M5*20	Standard	12
	Cross round head bolt	M6*8	Standard	10
	Cross round head bolt	M6*16	Standard	4
	Cross countersunk bolt	M8*25	Standard	4
	Flat washer	Φ6	Standard	9
	Flat washer	Φ14	Standard	21
	Flat washer	Φ10	Standard	4
	Spring washer	Φ6	Standard	6
	Spring washer	Φ10	Standard	4
	Spring washer	Φ14	Standard	21
	Nylon fixer		Nylon	12
	Nut	M6	Standard	9
	Nut	M10	Standard	4
	Nut	M14	Standard	21
	Circlip	Φ50	Standard	4
	Expansion bolt	M18*160	Standard	10

### Annex2, Overall diagram

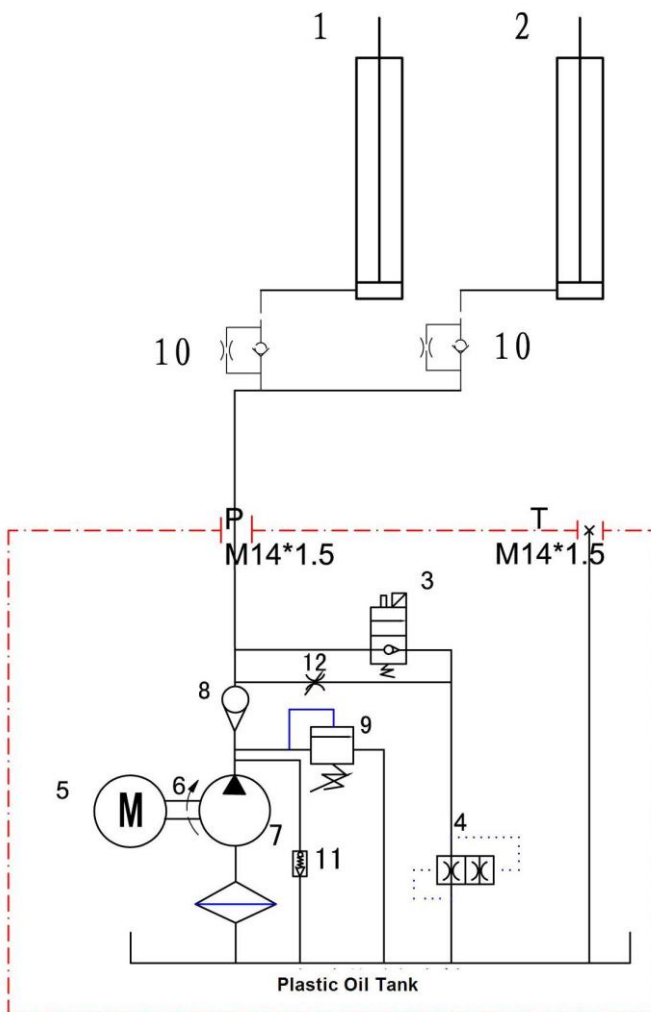




Annex3, Diagram for ground fixing



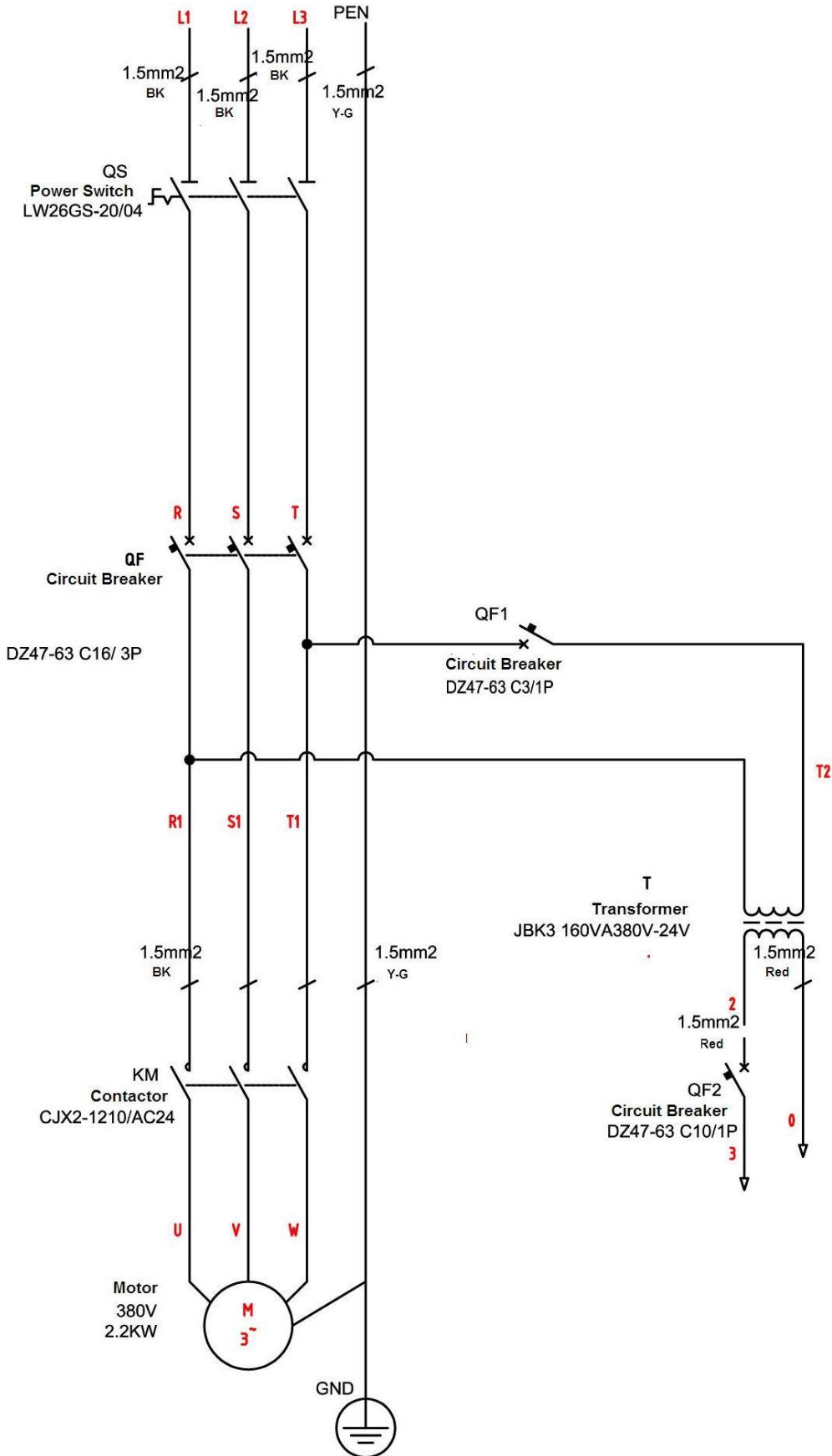
**Annex 4, Hydraulic working system**



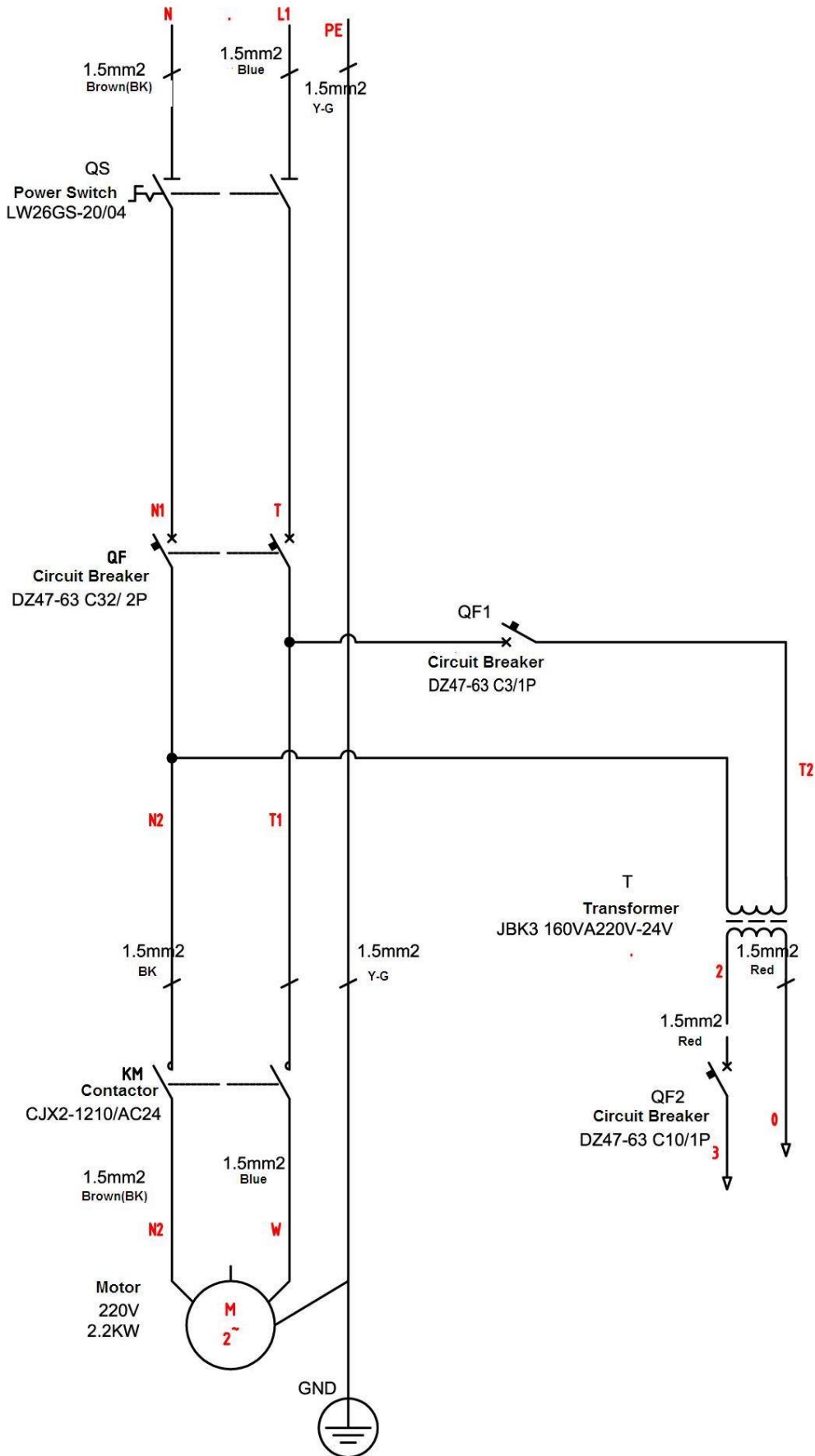
- 1. Main cylinder
- 2. Assistant cylinder
- 3. E-magnetic unloading valve
- 4. Throttle valve
- 5. Motor
- 6. Coupling
- 7. Gear pump
- 8. Single-way valve
- 9. Overflow valve
- 10. Anti-surge valve
- 11. Cushion valve
- 12. Emergent unloading valve

Annex5, Wiring diagram

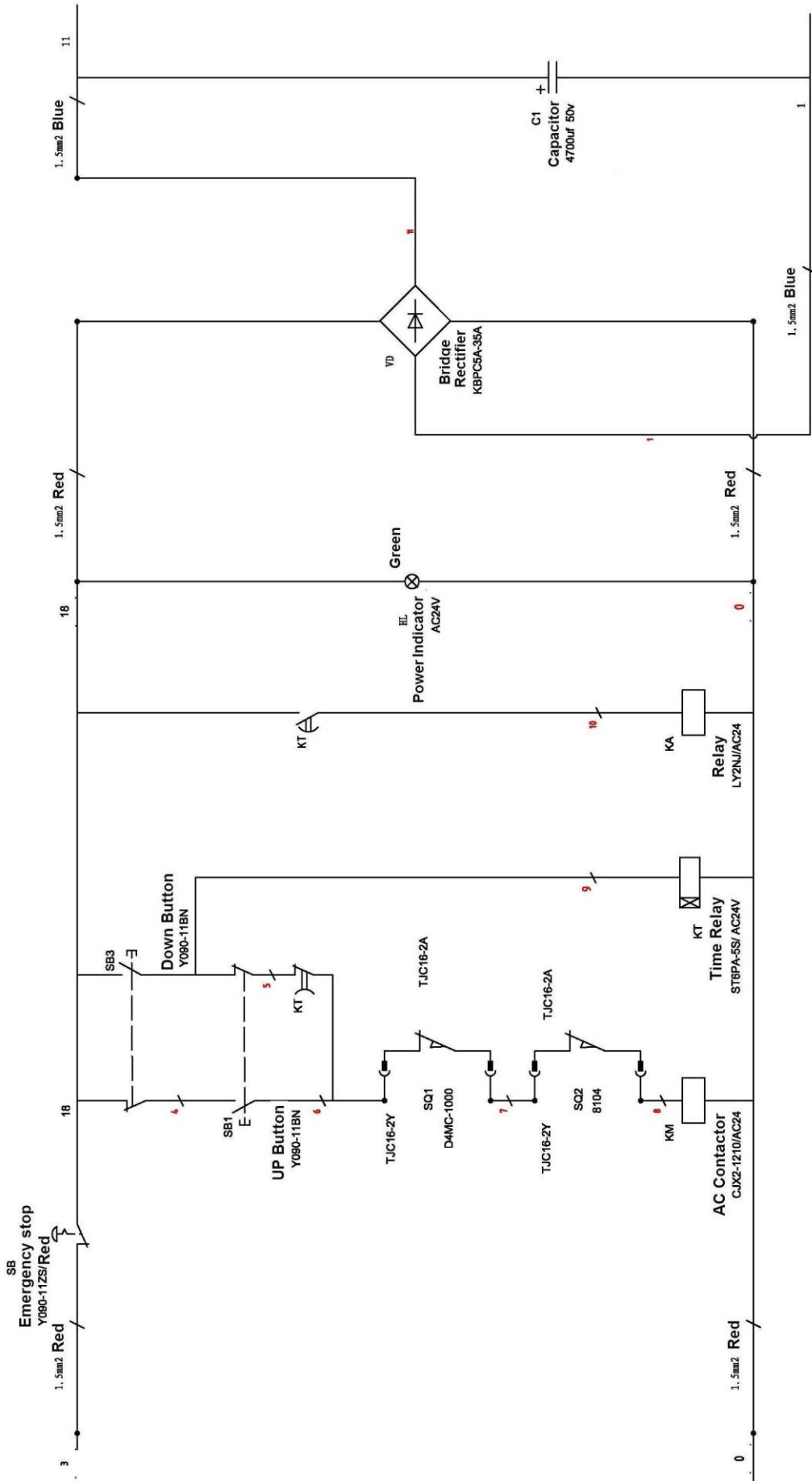
Three phase



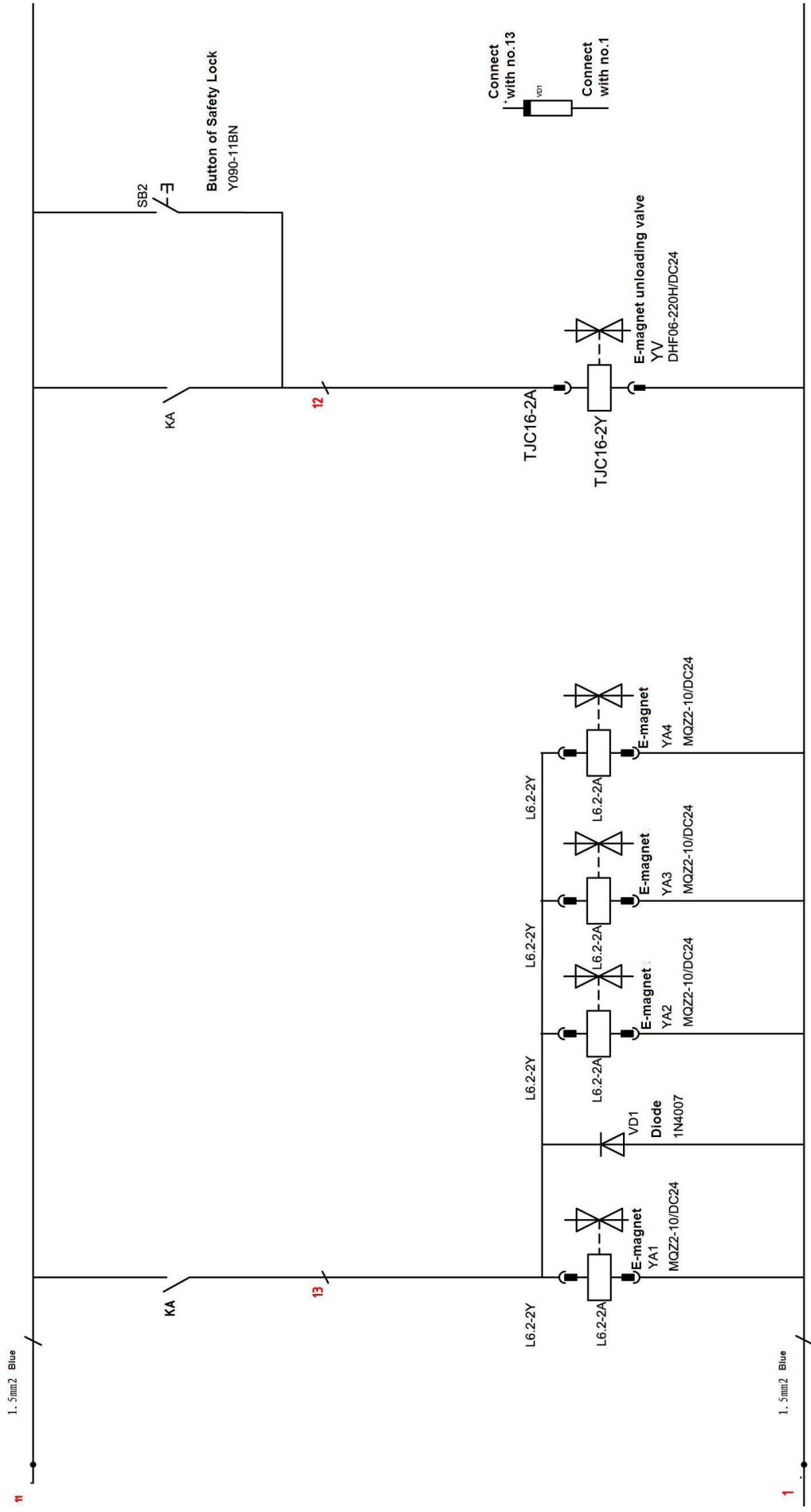
Single phase

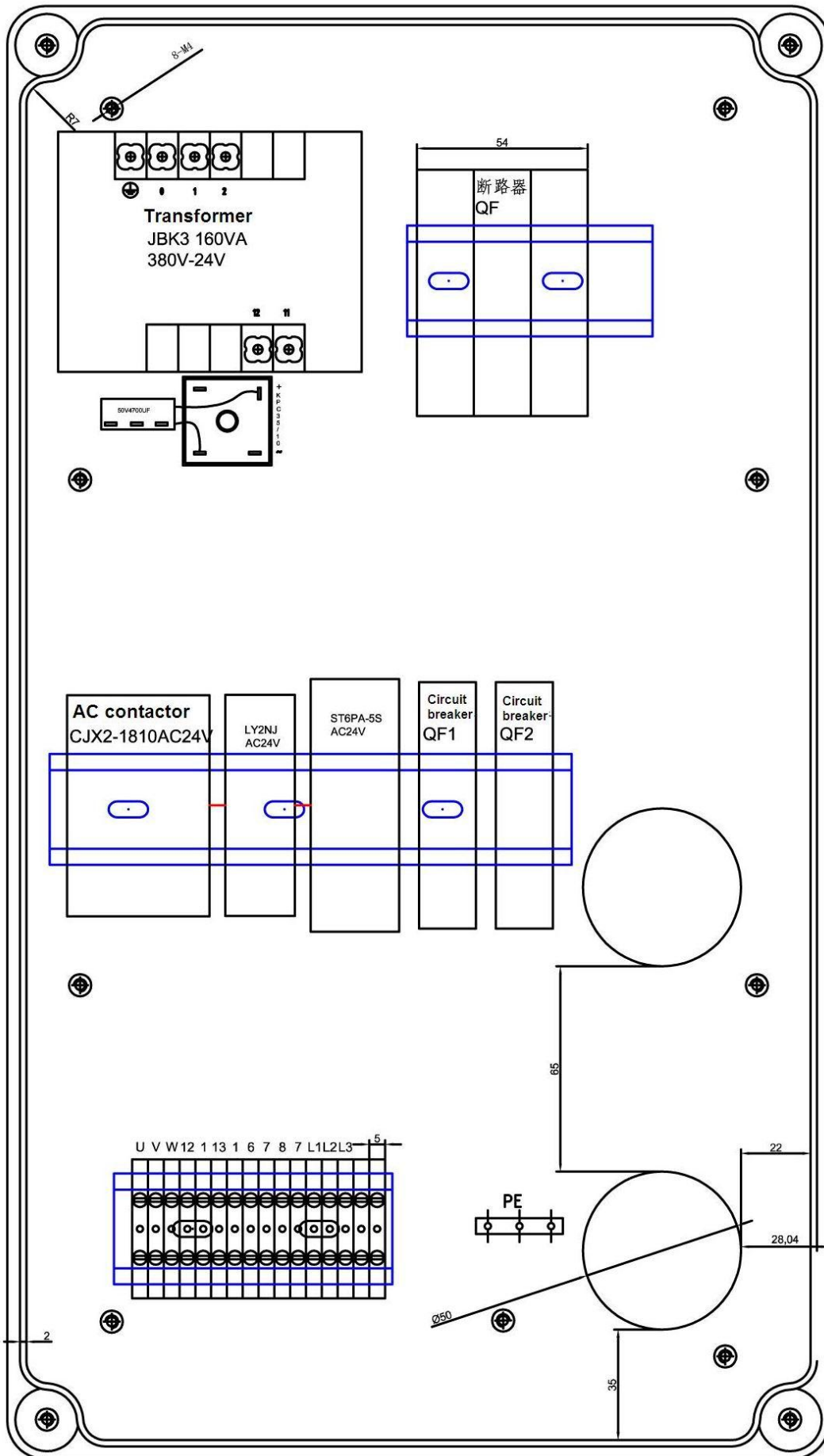


# VEHICLE LIFT SPECIALIST



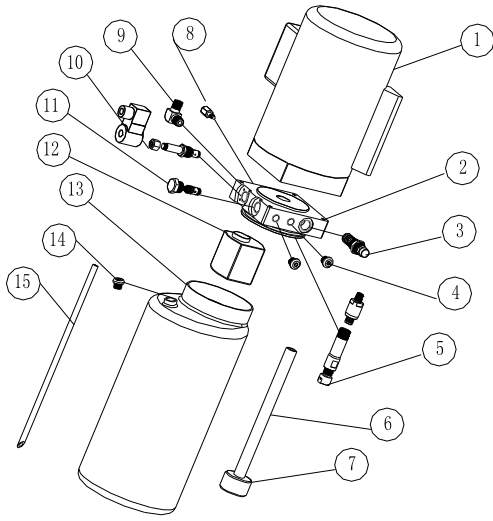
# VEHICLE LIFT SPECIALIST





**Annex 6, Separate diagrams for the lift**

**For the pump:**

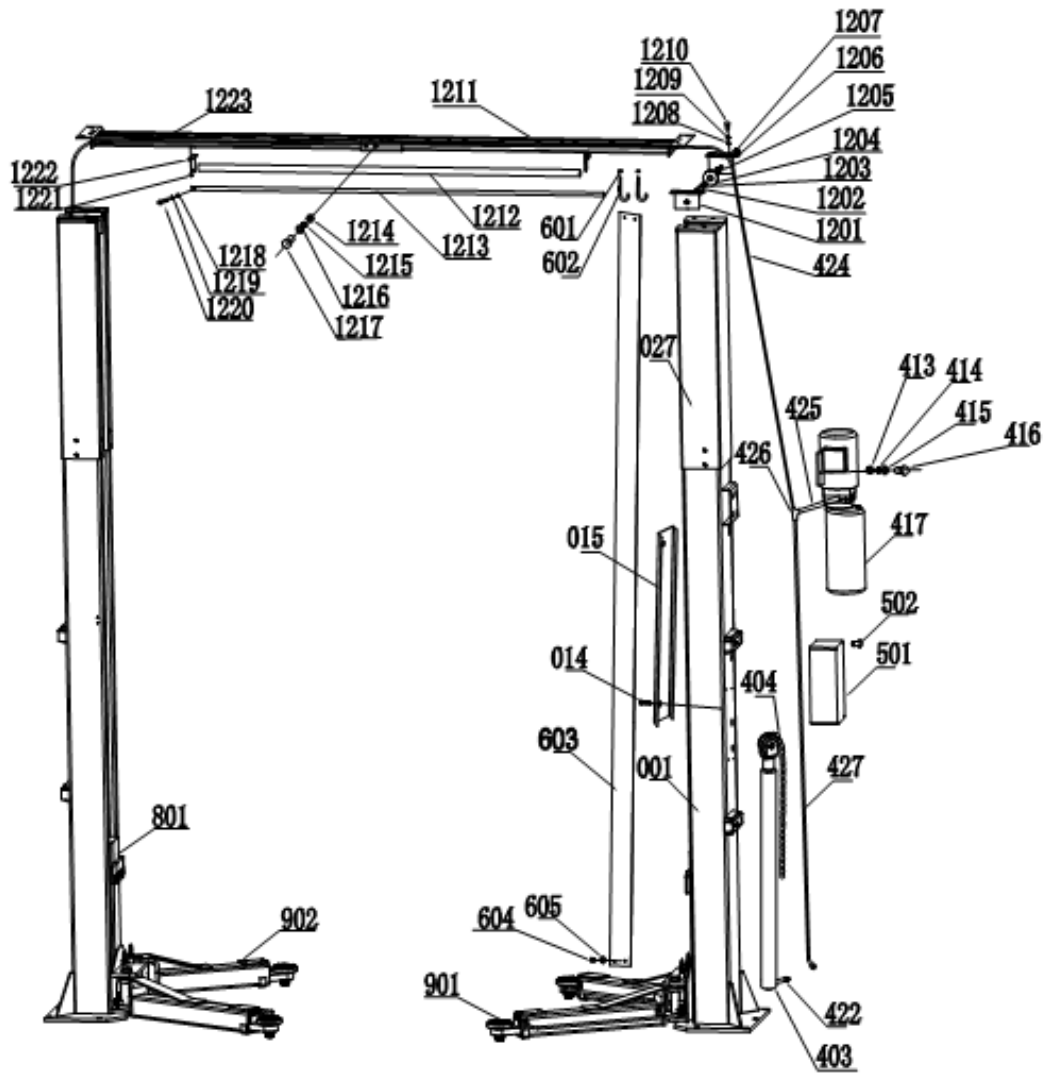


S/N	Name	Qty
1	Motor	1
2	Hydraulic block	1
3	Overflow valve	1
4	Removable plug	2
5	Cushion valve	1
6	Oil absorbing pipe	1
7	Oil filter	1
8	Throttle valve	1
9	Oil pipe tie-in	1
10	E-magnetic unloading valve	1
11	One-way valve	1
12	Gear pump	1
13	Plastic oil tank	1
14	Oil tank cover	1
15	Oil back pipe	1

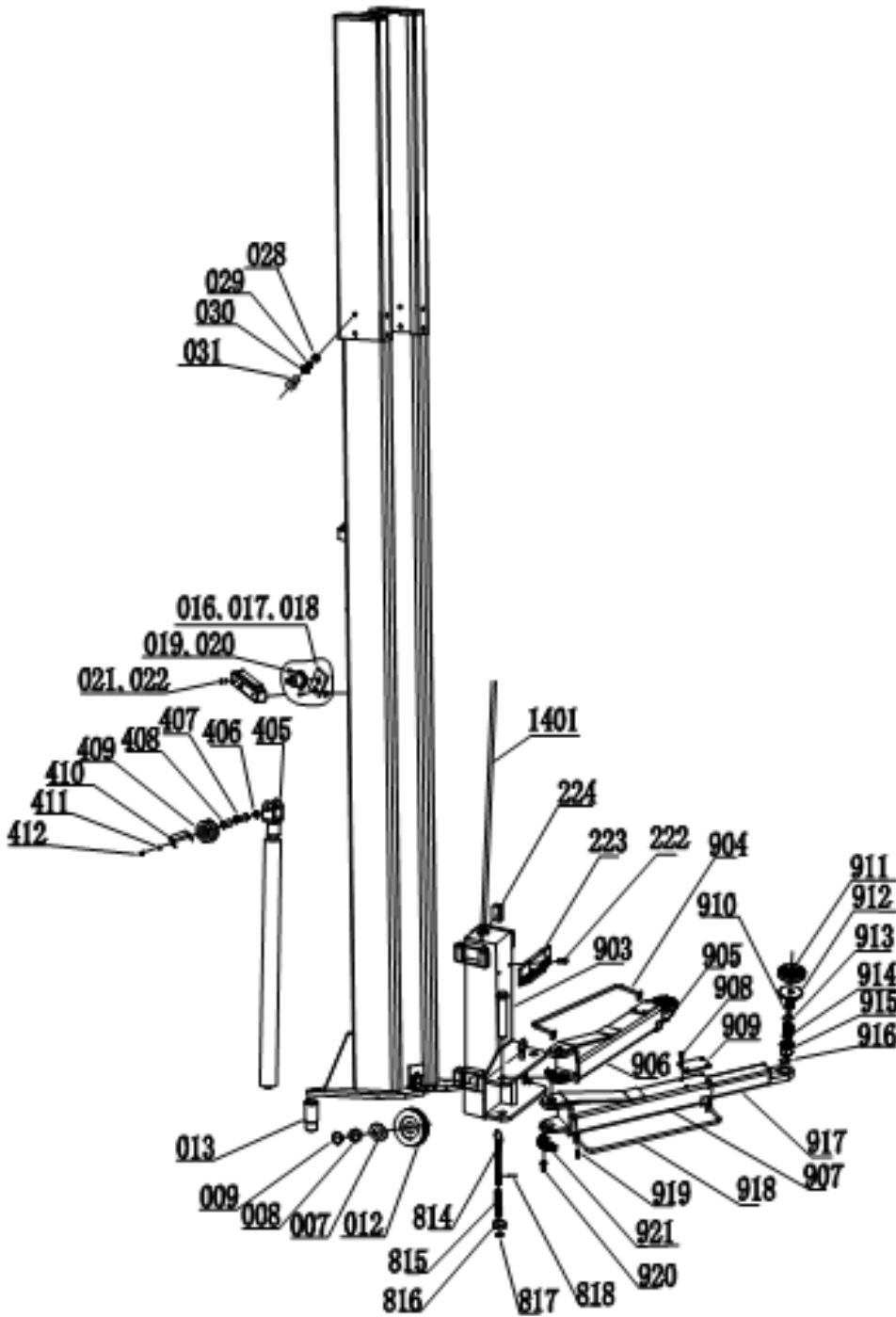
**For the mechanical assembly**



VEHICLE LIFT SPECIALIST



# VEHICLE LIFT SPECIALIST



S/N	Material#	Name	Drawing#/Size	Qty	Des.	Note
001	620001	Main post	EE-6214E-A1	1	Welding	
002	620002	Assistant post	EE-6214E-A2	1	Welding	
003	220001	Oilless bearing	SF-1 2512	4	Standard	
004	401001	Washer	EE-6254A-A1-B2	4	Q235A	
005	219002	Circlip	Φ25	2	Standard	
012	241063	Down sheave	EE-6254E-A1-B1	1	45#	
013	247071	Height adapter	EE-6254E-A11	4	Welding	130MM
014	215023	Cross round head bolt	M5*22	16	Standard	
015	403009	Hose cover	EE-6254E-A18	8	Q235A	
016	403024	Safety plate	EE-6254E-A13	4	45#	
017	403008	Orientation block	EE-6254E-A17	4	Q235A	

## VEHICLE LIFT SPECIALIST

S/N	Material#	Name	Drawing#/Size	Qty	Des.	Note
001	620001	Main post	EE-6214E-A1	1	Welding	
002	620002	Assistant post	EE-6214E-A2	1	Welding	
003	220001	Oilless bearing	SF-1 2512	4	Standard	
004	401001	Washer	EE-6254A-A1-B2	4	Q235A	
005	219002	Circlip	Φ25	2	Standard	
018	215002	Cross round head bolt	M6*16	4	Standard	
019	215008	Cross round head bolt	M5*10	16	Standard	
020	403006	E-magnet	EE-6254E-A14	4	Component	
021	428036	Cover of the e-magnet	EE-6254E-A15	4	Plastic	
022	215008	Cross round head bolt	M5*10	8	Standard	
027	605008	Extending post	EE-6214A-A20	2	Welding	
028	216007	Nut	M14	16	Standard	
029	217006	Flat washer	Φ14	16	Standard	
030	218001	Spring washer	Φ14	16	Standard	
031	212013	Bolt	M14*25	16	Standard	
1201	405022	Left bracket	EE-6214A-A22-B1	2	Q235A	
1202	405023	Shaft of the up sheave	EE-6214A-A22-B2	2	45#	
1203	220002	Oilless bearing	SF-1 2518	4	Standard	
1204	241008	Up sheave	EE-6254A-A3-B1	4	45#	
1205	217007	Flat washer 20	Φ20	4	Standard	
1206	405024	Right bracket	EE-6214A-A22-B3	2	Q235A	
1207	216009	Hex nut	M20	4	Standard	
1208	217005	Flat washer	Φ12	8	Standard	
1209	218005	Spring washer	Φ12	8	Standard	
1210	212012	Bolt	M12*30	8	Standard	
1211	605006	Outside beam	EE-6214A-A21-B4	1	Welding	
1212	405021	Long rod	EE-6254A-A21-B5	1	Q235A	
1213	243012	Protection sheath	EE-6214A-A21-B3	1		
1214	216007	Nut	M4	5	Standard	
1215	217006	Flat washer	Φ14	5	Standard	
1216	218001	Spring washer	Φ14	5	Standard	
1217	212012	Outside hex bolt	M12*30	5	Standard	
1218	216003	Nut	M6	1	Standard	
1219	217001	Flat washer	Φ6	1	Standard	
1220	212049	Outside hex bolt	M6*35	1	Standard	
1221	215004	Cross round head bolt	M6*12	2	Standard	
1222	605004	Long rod bracket	EE-6214A-A21-B1	1	Welding	
1223	605005	Inside beam	EE-6214A-A21-B2	1	Welding	
801	603004	Carriage	EE-6254E-A2-B2	2	Welding	
814	241012	Pulling rod	EE-6254E-A2-B1	4	Welding	
815	255002	Pressure spring	EE-6214F-A3-B5	4	Standard	
816	215040	Teeth block	EE-6214F-A3-B3	4	Q235A	
817	219012	Circlip	Φ22	4	Standard	
818	224054	Elastic post pin	5*35	4	Standard	
222	214003	Cross flat head bolt	M8*25	4	Standard	
223	242002	Rubber door-opening pad	EE-6254A-A7-B10	2	Rubber	
224	242003	Slider	EE-6254A-A7-B1	16	Nylon1010	
225	243005	Steel cable	EE-6214A-A6	2	Component	10840mm
901		Short arm	EE-6254E-A8	1	Component	

## VEHICLE LIFT SPECIALIST

S/N	Material#	Name	Drawing#/Size	Qty	Des.	Note
001	620001	Main post	EE-6214E-A1	1	Welding	
002	620002	Assistant post	EE-6214E-A2	1	Welding	
003	220001	Oilless bearing	SF-1 2512	4	Standard	
004	401001	Washer	EE-6254A-A1-B2	4	Q235A	
005	219002	Circlip	Φ25	2	Standard	
902		Long arm	EE-6254E-A7	2	Component	
903	264015	Pin shaft	EE-6254E-A12	4	Welding	
904	603019	Long fender	EE-6254E-A8-B6	2	Welding	
905	603008	Long tensile arm	EE-6254E-A7-B3	2	Welding	
906	603007	Long arm	EE-6254E-A7-B1	2	Welding	
907	603013	Short arm	EE-6254E-A8-B1	2	Welding	
908	215008	Cross round head bolt	M5*10	16	Standard	
909	242018	Pad (rectangular)	EE-6254E-A7-B2	4	Rubber	
910	219014	Circlip	Φ26	4	Standard	
911	249019	Round pad	EE-6254E-A7-B4-C4	4	Rubber	
912	601014	Lifting tray	EE-6254E-A7-B4-C1	4	Welding	
913	219015	Circlip	Φ38	8	Standard	
914	241065	Bolt sheath	EE-6254E-A7-B4-C2	4	Q235A	
915	241064	Inside bolt sheath	EE-6254E-A7-B4-C3	4	Q235A	
916	219009	Circlip	Φ50	4	Standard	
917	603010	Short tensile arm	EE-6254E-A8-B2	2	Welding	
918	603018	Short fender	EE-6254E-A8-B5	2	Welding	
919	211001	Inside hex bolt	M8*12	8	Standard	
920	211074	Inside hex bolt	M10*20	12	Standard	
921	254016	Semi-circle block	EE-6215-A4-B3	4	Q235A	
403	241002	Assistant oil cylinder	EE-6254A-A5-B-4	2	Component	
404	241003	Leaf chain	LH1234-127	2	Assembly	
405	601005	Lead chain holder	EE-6254A-A5-B1	2	Welding	
406	219002	Circlip	Φ25	2	Standard	
407	241009	Shaft of chain wheel	EE-6254A-A5-B2	2	45#	
408	220003	Oilless bearing	SF-1 2548	2	Standard	
409	241010	Chain wheel	EE-6254A-A5-B3	2	45#	
410	241051	Baffle plate	EE-6254A-A5-B11	2	Q235A	
411	218002	Flat washer	M6	4	Standard	
412	211028	Inside hex bolt	M6*20	4	Standard	
413	216005	Nut	M10	4	Standard	
414	217004	Spring washer	M10	4	Standard	
415	218004	Flat washer	M10	4	Standard	
416	212008	Outside hex bolt	M10*30	4	Standard	
417		Hydraulic assembly	EE-6254A-A5-B6	1	Assembly	
422	243013	Tie-in	EE-6214A-A5-B4	2	Component	With anti-surge
424	243027	Long oil hose	EE-6214E-A5-B3	1		L=8535mm
425	243010	Short oil hose	EE-6214E-A5-B2	1		L=220mm
426	243015	Three way tie-in	EE-6214-A5-B2	1	Component	
427	243026	Short oil hose	EE-6214E-A5-B1	1	Component	L=2265mm
501		Electrical system	EE-6214E-A4	1	Assembly	
502	215032	Cross round head bolt	M5*12	4	Standard	
601	216003	Bolt	M6	8	Standard	
602	241026	Hook of protection cloth	EE-6254A-A1-B6	4	Welding	

## VEHICLE LIFT SPECIALIST

S/N	Material#	Name	Drawing#/Size	Qty	Des.	Note
001	620001	Main post	EE-6214E-A1	1	Welding	
002	620002	Assistant post	EE-6214E-A2	1	Welding	
003	220001	Oilless bearing	SF-1 2512	4	Standard	
004	401001	Washer	EE-6254A-A1-B2	4	Q235A	
005	219002	Circlip	Φ25	2	Standard	
603	243001	Cloth	EE-6254A-A1-B5	2	Cloth	L=3743mm
604	217001	Flat washer	Φ6	8	Standard	
605	215003	Cross sunk head bolt	M6*8	8	Standard	

### Annex 7.Spare parts list



#### Spare parts list---electrical system

S/N	Material No.	Name	Spec.	Unit	Qty	Note
1	321001	Power switch	LW26GS-20/04	Pcs	1	
2	322008	Button	Y090-11BN	Pcs	3	
3	324021	Power Indicator	AD17-22G-AC24	Pcs	1	
4	320009	Transformer	JBK-160VA220V-24V	Pcs	1	Same outlook as item7
5	320098	Transformer	JBK-160VA230V-24V	Pcs	1	Same outlook as item7
6	320054	Transformer	JBK-160VA240V-24V	Pcs	1	Same outlook as item7
7	320057	Transformer	JBK-160VA380V-24V	Pcs	1	
8	320090	Transformer	JBK-160VA400V-24V	Pcs	1	Same outlook as item7
9	320061	Transformer	JBK-160VA415V-24V	Pcs	1	Same outlook as item7
10	330004	AC contactor	CJX2-1210/AC24	Pcs	1	
11	327004	Circuit breaker	DZ47-63 C16 /3P	Pcs	1	

VEHICLE LIFT SPECIALIST

S/N	Material No.	Name	Spec.	Unit	Qty	Note
12	327002	Circuit breaker	DZ47-63 C32 /2P	Pcs	1	
13	327003	Circuit breaker	DZ47-63 C3 /1P	Pcs	1	
14	327010	Circuit breaker	DZ47-63 C6 /1P	Pcs	1	Same outlook as item13
15	321003	Limit switch	D4MC1000	Pcs	1	
16	321024	Limit switch	ME8104	Pcs	1	
17	336012	Bridge rectifier	KBPC5A-35A	Pcs	1	
18	335007	Capacitor	4700UF/50V	Pcs	1	
19	328021	Control box	Bigger one	Pcs	1	
20	326010	Relay	LY2NJ/AC24	Pcs	1	
21	326011	Relay holder	PTF-08A	Pcs	1	

## VEHICLE LIFT SPECIALIST

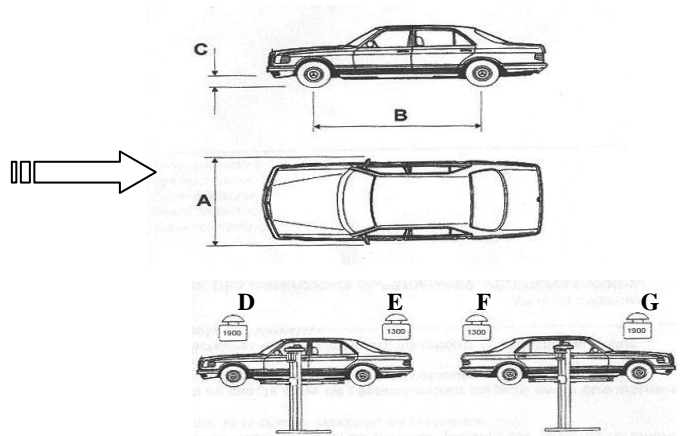
S/N	Material No.	Name	Spec.	Unit	Qty	Note
22	326005	Time relay	ST6PA-5S/AC24V	Pcs	1	
23	326006	Time relay holder	PYF-08A	Pcs	1	

### Spare parts list---machine part

S/N	Name	Drawing#	Qty	Desc.	Note
17	Orientation block	EE-6254E-A17	4	Q235A	
21	Protection cover for E-magnet	EE-6254E-A15	4	Plastic	
109	Top plate cover	EE-6254E-A16	2	Plastic	
814	Pulling rod	EE-6254E-A2-B1	4	Welding	
815	Compression spring	EE-6214F-A3-B5	4	Standard	
816	Teeth block	EE-6214F-A3-B3	4	Q235A	
223	Protection rubber pad	EE-6254-A7-B10	2	Rubber	
224	Slider	EE-6254-A7-B1	16	Nylon 1010	
909	Pad	EE-6254E-A7-B2	4	Rubber	
401	Oil hose	EE-6254E-A4-B2	1	Assembly	2800mm
421	Oil hose	EE-6254E-A4-B1	1	Assembly	2555mm
602	Pulling rod	EE-6254A-A1-B6	4	Welding	
603	Chain protection	EE-6254A-A1-B5	2	Q235A	

### Annex8 , Size and weight requirements on vehicles

Model No.	A (mm)	B (mm)	C (mm)	D (T)	E (T)	F (T)	G (T)
EE-6213E	2400	2900	100	1.9	1.3	1.3	1.9
EE-6214E	2400	2900	100	2.3	1.9	2.3	1.9



Profile of hydraulic block

