

## EE-6214D

Clear floor Two Post Lift    Manual Release  
Lifting Capacity: 4000KG

### INSTALLATION, OPERATION AND MAINTENANCE MANUAL



Read this entire manual carefully and completely before installation or operation of the lift.

**Edition : A**

## INDEX

<b>1. Important safety instructions.....</b>	<b>3~4</b>
1.1 Important notices	
1.2 Qualified personnel	
1.3 Danger notices	
1.4 Warning signs	
1.5 Sound level	
1.6 Training	
<b>2. Overview of the lift.....</b>	<b>5</b>
2.1 General descriptions	
2.2 Technical data	
2.3 Construction of the lift	
<b>3. Installation instructions.....</b>	<b>6~9</b>
3.1 Preparations before installation	
3.1.1 Tools and equipments needed	
3.1.2 A list for parts checking	
3.1.3 Ground conditions	
3.2 Precautions for installation	
3.3 Installation	
3.4 Items to be checked after installation	
<b>4. Operation instructions.....</b>	<b>10~13</b>
4.1 Precautions	
4.2 Descriptions of control box	
4.3 Flow chart for operation	
4.4 Operating instructions	
4.5 Emergency lowering in case of no power	
<b>5. Trouble shooting.....</b>	<b>14</b>
<b>6. Maintenance.....</b>	<b>15</b>
<b>7. Annex.....</b>	<b>16~29</b>
Annex1, Packing list of the whole lift	
Annex2, Overall diagram	
Annex3, Diagram for ground fixing	
Annex4, Hydraulic working system	
Annex5, Wiring diagram	
Annex6, Separate diagrams for the lift	
Annex7, Spare parts list	
Annex8, Size and weight requirements on vehicles	

## **1. IMPORTANT SAFETY INSTRUCTIONS**

### **1.1 Important notices**

Ever-Eternal will offer one-year's quality warranty for the whole machine , during which any quality problem will be properly solved to the user's satisfaction. However, we will not take any responsibility for whatever bad consequence resulted from improper installation and operation, overload running or unqualified ground condition.

This 2-posts lift is specially designed for lifting motor vehicles that weighs within its outmost lifting capacity. Users are not allowed to use it for any other purposes. Otherwise, we, as well as our sales agency, will not bear any responsibility for accidents or damages caused thereby.

Make sure to pay careful attention to the label of the lifting capacity attached on the lift and never try to lift cars with its weight beyond.

Read this manual carefully before operating the machine so as to avoid economic loss or personnel casualty incurred by wrong operation.

Without our professional advice, users are not permitted to make any modification to the control unit or whatever mechanical unit.

### 1.2 Qualified personnel

1.2.1 Only these qualified staff, who have been properly trained, can operate the lift.

1.2.2 Electrical connection must be done by a competent electrician.

1.2.3 People who are not concerned are not allowed in the lifting area.

### 1.3 Danger notices

1.3.1 Do not install the lift on any asphalt surface.

1.3.2 Read and understand all safety warnings before operating the lift.

1.3.3 The lift, if is not specially designed upon customer's request, is not fit for outdoor use.

1.3.4 Keep hands and feet away from any moving parts. Keep feet clear of the lift when lowering.

1.3.5 Only these qualified people, who have been properly trained, can operate the lift.

1.3.6 Do not wear unfit clothes such as large clothes with flounces, tires, etc, which could be caught by moving parts of the lift.

1.3.7 To prevent evitable incidents, surrounding areas of the lift must be tidy and with nothing unconcerned.

1.3.8 The lift is simply designed to lift the entire body of vehicles, with its maximum weight within the lifting capacity.

1.3.9 Always insure the safety latches are engaged before any attempt to work near or under the vehicle.

1.3.10 Make sure to place the lifting pads to the positions as suggested by vehicle makers and when gradually lift the vehicle to the desired height, operators should be certain that the vehicle will not slant, roll-over or slide in lifting process.

1.3.11 Check at any time the parts the lift to ensure the agility of moving parts and the performance of synchronization. Ensure regular maintenance and if anything abnormal occurs, stop using the lift immediately and contact our dealers for help.

1.3.12 Lower the lift to its lowest position and do remember to cut off the power source when service finishes.

1.3.13 Do not modify any parts of the lift without manufacturer's advice.

1.3.14 If the lift is going to left used for a long time, users are required to:

- a. Disconnect the power source;
- b. Empty the oil tank;
- c. Lubricate the moving parts with hydraulic oil.

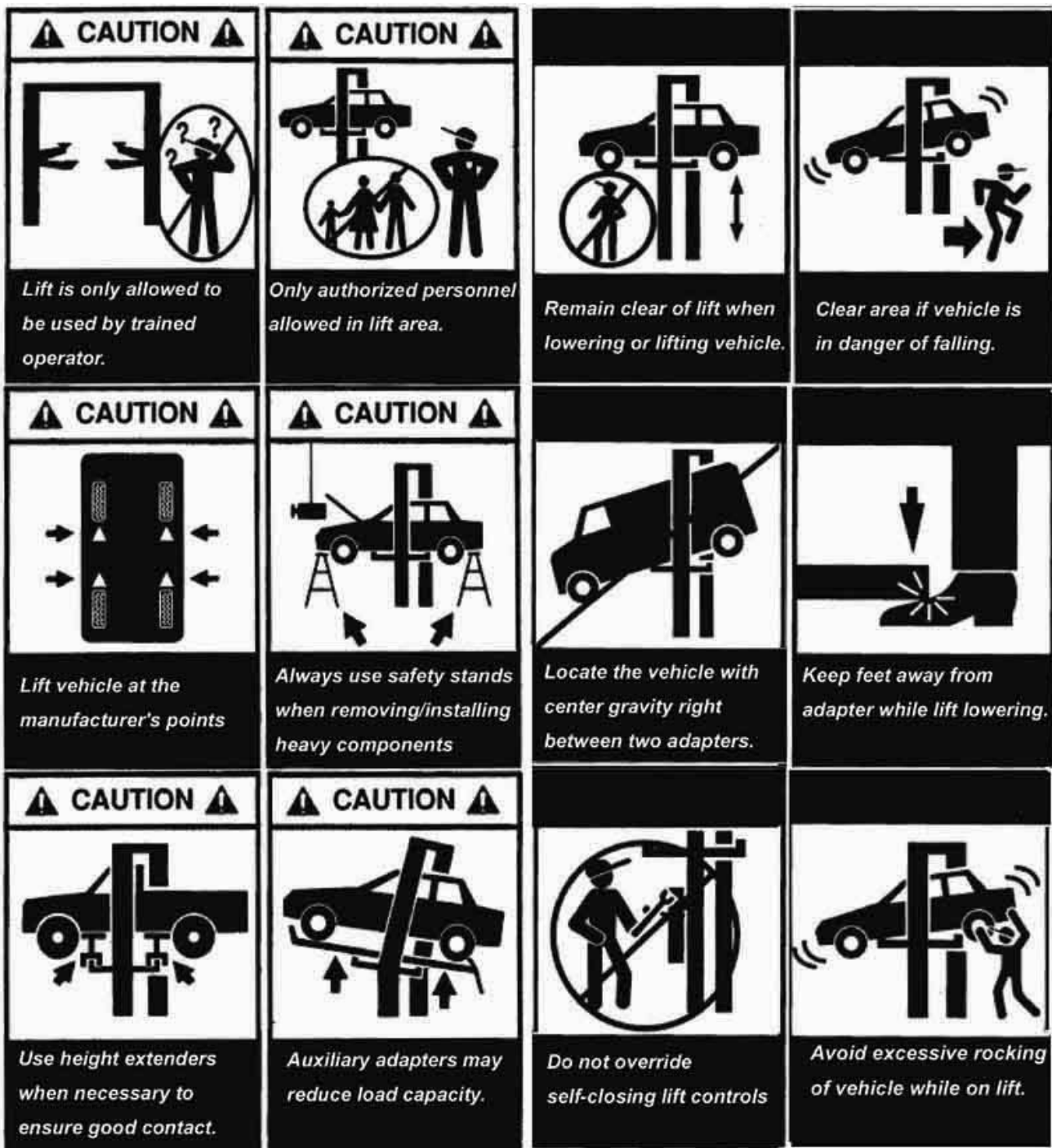
**Attention: For environment protection, please dispose the disused oil in a proper way.**

### 1.4 Warning signs

All safety warning signs attached on the machine are for the purpose of drawing the user's attention to safety operation. The

## VEHICLE LIFT SPECIALIST

labels must be kept clean and need to be replaced when they are worn-out or have dropped. Read the explanations of the labels carefully and try to memorize them.



### 1.5 Sound Level

The sound emitted from the lift should not exceed 75DB. For the sake of your health, we suggest putting a noise detector in your working area.

### 1.6 Training

Only these qualified people, who have been properly trained, can operate the lift. We are quite willing to provide professional training for the users when necessary.

## 2. Overview of the lift

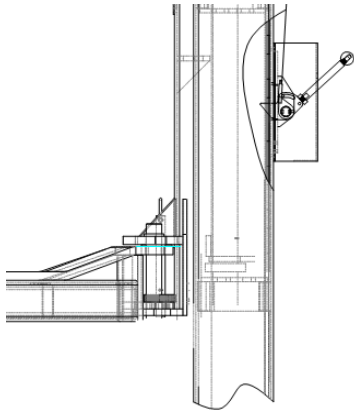
### 2.1 General descriptions

## VEHICLE LIFT SPECIALIST

This clear- floor two posts lift is composed of posts, carriages, lifting arms, cylinders and motor unit, etc.

The lift is drove by an electro- hydraulic system. The gear pump delivers hydraulic oil to oil cylinders and pushes upwards its piston. The piston drives to raise the carriage and the lifting arms. During lifting process, the safety lock will automatically and firmly bite with the safety teeth block in the posts. Therefore, no sudden dropping-down will happen in case the hydraulic system beaks down.

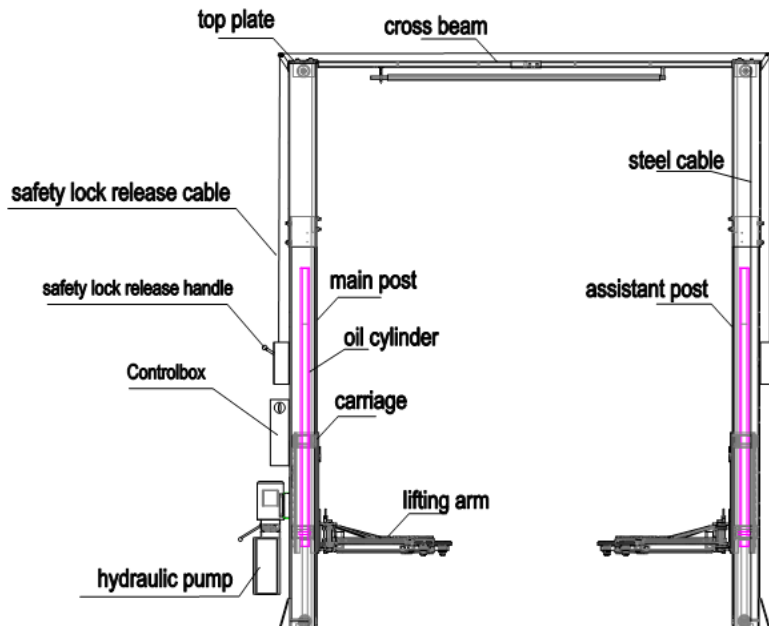
Safety structure:



### 2.2 Technical data

Model	Lifting capacity	Lifting time	Lifting height	Height	Width	Width between posts
EE-6214D	4000kg	60s	1900mm	3882mm	3420mm	2830mm

### 2.3 Construction of the lift



## 3.Installation instructions

### 3.1 Preparations before installation

## 3.1.1 Tools and equipments needed

- ✓ Appropriate lifting equipment
- ✓ Anti-abrasion hydraulic oil.
- ✓ Rotary Hammer Drill with 3/4" drill bit.
- ✓ Chalk and tape measure, magnetic plump, 8 metersΦ15 level pipe.
- ✓ Sockets and open wrenches, a set of inside hex wrenches ,cross and straight screw drivers.
- ✓ Hammer, 4pounds, sharp nose pliers, Φ17,Φ19,Φ22 socket spanners.

## 3.1.2 List for parts checking ---Annex 1 ( Packing list )

Unfold the package and check if any parts missed as per Annex 1. Do not hesitate to contact us in case any parts missed, but if you do not contact us and insist installation upon the lack of some parts, Ever-eternal as well as our dealers will not bear any responsibility for this and will charge for any parts subsequently demanded by the buyer.

## 3.1.3 Ground conditions

The lift should be fixed on a smooth and solid concrete ground with its strength more than 3000psi, tolerance of flatness less than 5mm and minimum thickness of 200mm. In addition, newly built concrete ground must undergo more than 28days' cure and reinforcement.

## 3.2 Precautions for installation

3.2.1 Make sure the two posts stand paralleled and are vertical to the ground. No slanting.

3.2.2 Joints of oil hose and steel cable must be firmly connected in order to avoid the looseness of steel cable and leakage of oil hose.

3.2.3 All bolts should be firmly screwed up.

3.2.4 Do not place any vehicle on the lift in the case of trial running.

## 3.3 Installation



**Step 1: Remove the packaging, take out the carton for accessories and cover plate. Please do read and understand this manual thoroughly before next step.**

**Step 2 : Firstly, put something supporting between the two posts or suspend one of the posts by a crane and then remove the bolts from the packing frame.**

**Attention :** Please pay special attention not to let the post fall down because it may cause casualty or bring damages to the accessories fixed in the post.

**Step 3 : When the first post has been taken away, place something supporter under the second post and then remove the bolts from the packing frame.**

**Step 4: Fix the standing position for the two posts by chalk and a tape measure, with a width of 2830mm between them.**

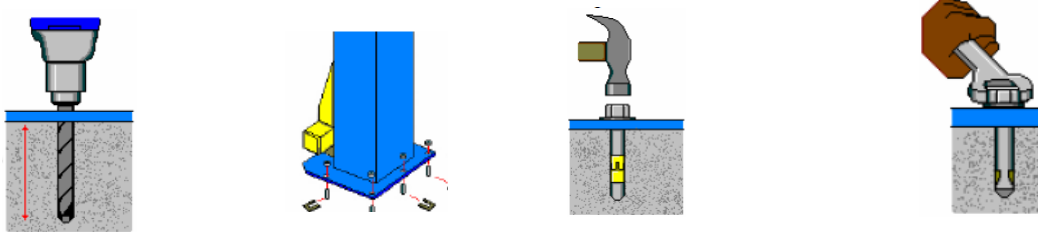
1. Unfold the package and decide on which post the power unit will be mounted.

2. Draw an outline of the base plate on the ground with chalk and ascertain the standing position for the two posts.

**Step 5: Erect and secure the posts, main post (the post on which the control box and hydraulic pump assembly will be mounted) first and then the assistant post.**

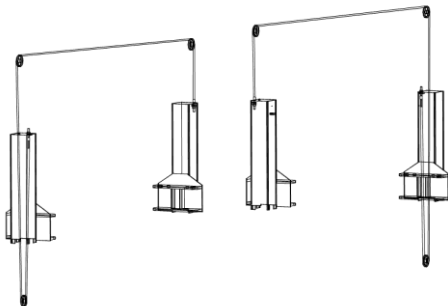
## VEHICLE LIFT SPECIALIST

1. Firstly have the extending small post firmly secured on to the body posts with properly bolts.
2. Drill anchor holes for each expansion bolt on the ground with an electrical drill. Make sure to drill vertically.
3. After holes have been drilled, remove thoroughly the debris and dust in them and ascertain that the posts stay right upon the outline previously drawn by chalk.
4. In case the base of the post and the surface of the ground were not as smooth as required, insert a piece of washer (with proper thickness) under the base of the post to ensure the smoothness and the verticality of the post .Secure the post with expansion bolts thereafter.
5. Erect and secure the assistant post similarly as per step, 1,2,and 3.
6. Use proper lifting equipments to have the cross beam lifted onto the top of the two posts and then secure it with proper bolts.



### Step7: Connect the steel cable

1. Raise carriages on both sides approximately 800mm above the ground.
2. Make sure that the safety locks in each post are fully engaged before attempting to route steel cables.
3. Carriages must be on the same height from the floor before proceeding.
4. Install according to the following diagram of steel cable connection .
5. After the steel cable has been fixed, adjust and make cable at both sides be with the same tightness which could be judged by the sound emitted during lifting process. If currently installers can not ascertain, they can make adjustment in trial running process.
6. Grease the steel cable after they have been fixed. (It is a must.)



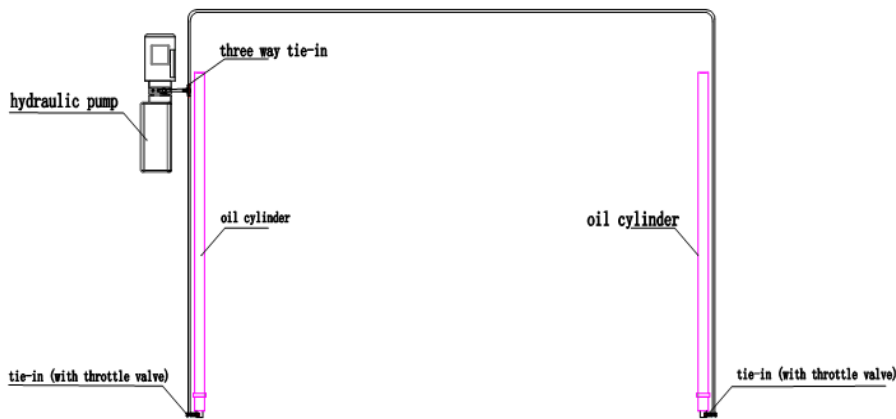
Bolt to adjust the tightness of the steel cable

### Step8: Connect the oil hose

- 1 Make sure all hose ends are clean.
2. Connect the oil hose as per the following diagram.
3. Screw down the bolt at the top of the oil cylinder when venting

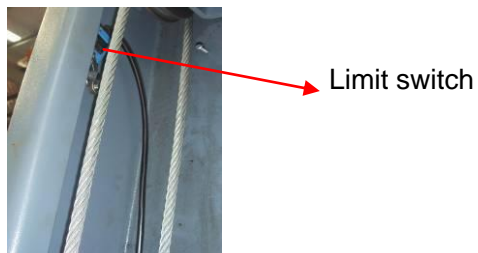
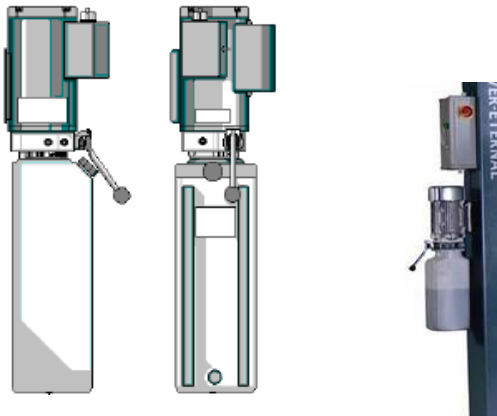


Air outlet



## Step9: Mount the power unit and the control box

1. Mount the power unit onto the main post.
2. Connect the power unit with the control box as per the wiring diagram.

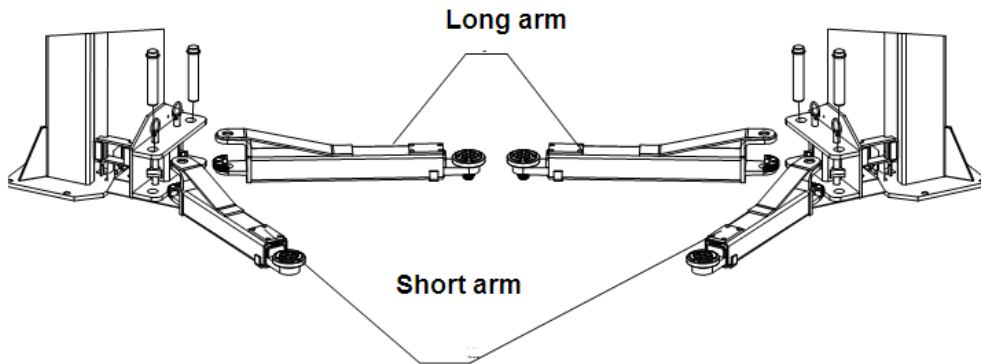


3. Connect the limit switch

## Step10: Install the lifting arms

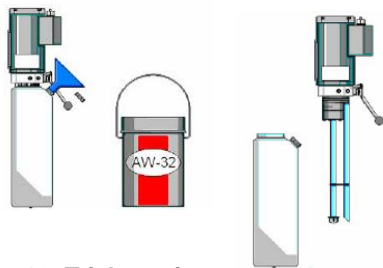
Connect the lifting arm and the carriage by pins. Install the lifting arms onto the carriages and make sure the safety lock and safety teeth are well matched.





## Step11: Fill with hydraulic oil

The volume of oil tank is 10L. To insure the lift work normally, the amount of oil in it should reach 80% of the tank's total volume.



## Step12: Trial running

1. Do refer to the operation instructions in advance and keep in mind that no vehicle left on the lift in the process of trial running.
2. Check if all the connections are in good condition.

## Step 13: Install the protection cloth and door-opening protection



## 3.4 Items to be checked after installation

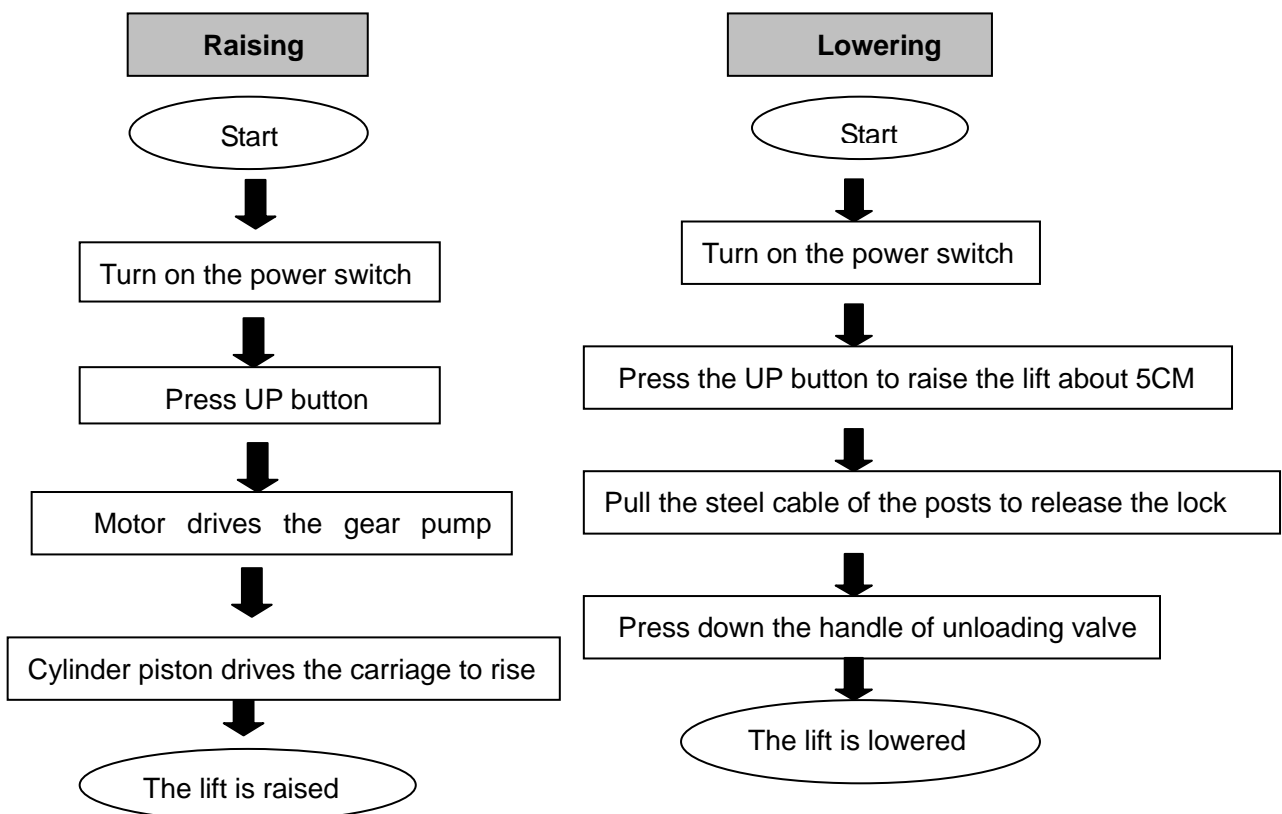
S/N	Check items	YES	NO
1	Are the posts vertical to the floor?		
2	Are the two posts paralleled?		
3	Is the oil hose well connected?		
4	Is the steel cable well connected?		
5	Are all lifting arms well fixed?		
6	Are electrical connections right?		
7	Are the rest joints firmly screwed?		
8	Are all items need lubricating added with grease?		

## 4. Operation instructions

### 4.1 Precautions

- 4.1.1 Check all the joints of oil hose. Only when there is no leakage, the lift can start work.
- 4.1.2 The lift, if its safety device malfunctions, shall not be used.
- 4.1.3 The machine shall not lift or lower an automobile if its center of gravity is not positioned midway of the swing arms. Otherwise, the Ever-Eternal as well as our dealers will not bear any responsibility for any consequence resulted thereby.
- 4.1.4 Operators and other personnel concerned should stand in a safety area during lifting and lowering process.
- 4.1.5 When lifting arms rise to the desired height, switch off the power at once to prevent any mal-operation done by unconcerned people.
- 4.1.6. Make sure the safety lock of the lift is engaged before start working under the vehicle and no people under the vehicle during lifting and lowering process.

### 4.2 Flow chart for operation



### 4.4 Operation instructions

#### Raise the lift

1. Make sure that you have read and understood the operation manual before operation.
2. Park the vehicle between two posts.
3. Adjust the lifting arms until they reach the supporting positions of the vehicle and make sure the gravity of vehicle located midway of four lifting arms.
4. Switch on and insure to operate as per requirements on the nameplate attached.

## VEHICLE LIFT SPECIALIST

5. Gently press the "UP" button on the control box until pads of lifting arms touched the prop-position of vehicle.
6. Keep on raising the vehicle to let it have a bit clearance from the ground and check again its stability.
7. Raise the vehicle to the desired height, check again whether it is safe or not, press down the handle of unloading valve to have the safety lock engaged, turn off the power and then perform maintenance or repair work underneath.

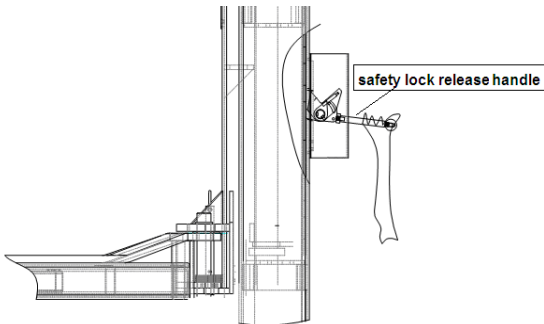
### Lower the lift

1. Switch on.
2. Press the UP button to loose the safety lock.
3. Pulling the steel cable (SAFETY LOCK) on each post to release the safety lock before lowering.
4. Lower the lift by pressing the handle of manual unloading valve.
5. After the arms being lowered to the lowest position, pull them to the horizontal position and clear up all the obstacles.
6. Drive the vehicle away.

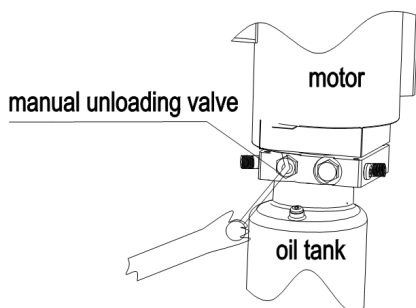
### 4.5 Emergency lowering in case of no power

The carriage is not engaged:

- a. Pull down the safety lock release handle.

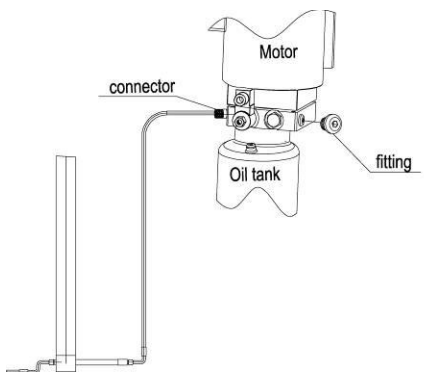


- b. Press the handle of the manual unloading valve to lower the carriage.



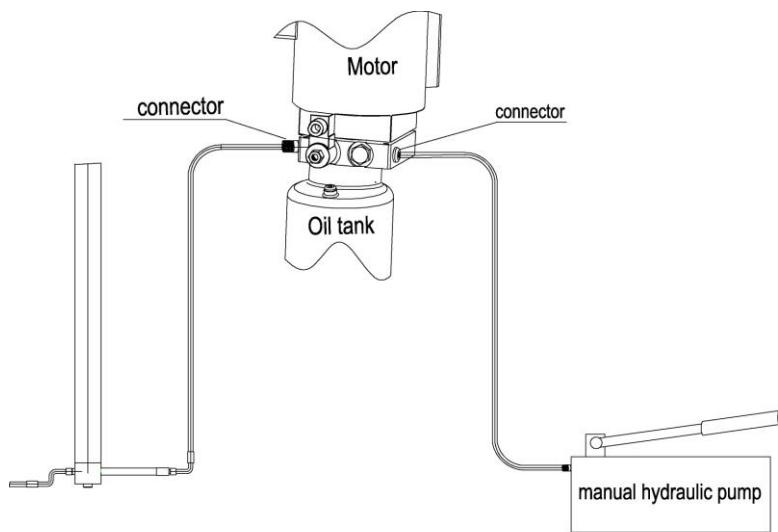
The carriage is engaged:

- a. Screw off the fitting (opposite to the oil out-let) to connect the manual hydraulic pump.

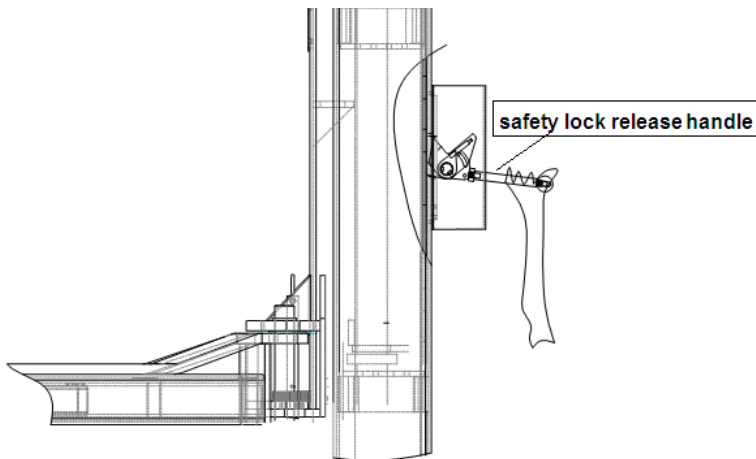


## VEHICLE LIFT SPECIALIST

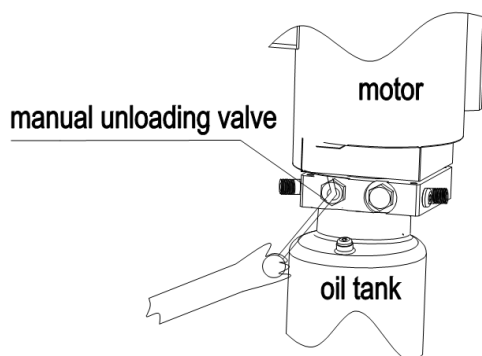
- b. Press the handle of the hydraulic pump (optional) to supply oil to the cylinder and release the lock.



- C. Pull off the safety latch-steel wires attached on the two posts.



- d. Press the handle of the manual unloading valve to lower the carriage.



## 5. Trouble Shooting

ATTENTION: If the trouble could not be fixed by yourself, please do not hesitate to contact us for help .We will offer our service at the earliest time we can. By the way, your troubles will be judged and solved much faster if we can get in time more details or pictures of the trouble.

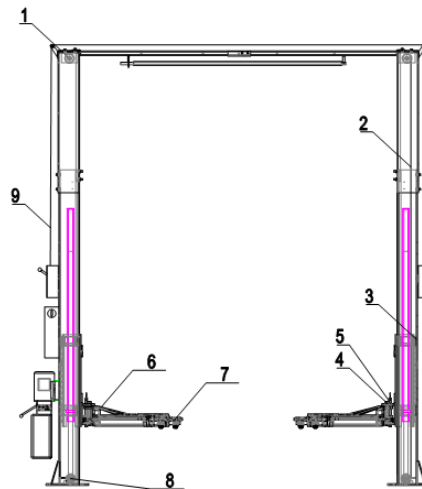
TROUBLES	CAUSE	SOLUTION
Abnormal noise	Abrasion exists on insider surface of the posts.	Grease the inside of the post.
	Trash in the post.	Clear the trash
Motor does not run and will not rise	The wire connection is loose.	Check and make a good connection.
	The motor is blown.	Replace it.
	The limit switch is damaged or the wire connection is loose.	Connect it or adjust or replace the limit switch.
Motor runs but will not raise	The motor run reversely.	Check the wire connection.
	Overflow valve is loose or jammed.	Clean or adjust it.
	The gear pump is damaged.	Replace it.
	Oil level is too low.	Add oil.
	The oil hose became loose or dropped off.	Tighten it.
	The cushion valve became loose or jammed.	Clean or adjusts it.
Carriages go down slowly after being raised	The oil hose leaks.	Check or replace it.
	The oil cylinder is not tightened.	Replace the seal.
	The single valve leaks.	Clean or replace it.
	The overflow valve leaks.	Clean or replace it.
	Manual unloading valve or electrical unloading valve leaks.	Clean or replace it.
Raising too slow	The oil filter is jammed.	Clean or replace it.
	Oil level is too low.	Add oil.
	The overflow valve is not adjusted to the right position.	Adjust it.
	The hydraulic oil is too hot ( above 45° ) .	Change the oil.
	The seal of the cylinder is abraded.	Replace the seal.
	Inside surface of the posts is not well greased.	Add grease.
Lowering too slow	The throttle valve jammed.	Clean or replace.
	The hydraulic oil is dirty.	Change the oil.
	The anti-surge valve jammed.	Clean it.
	The oil hose jammed.	Replace it.
The steel cable is abraded	No grease when installation or out of lifetime	Replace it.

## 6. Maintenance

Easy and low cost routine maintenance can ensure the lift work normally and safely. Following are requirements for routine maintenance. You may choose the frequency of routine maintenance by consulting your lift's working conditions and time.

THE FOLLOWING PARTS NEED LUBRICATING

S/N	Name
1	UP sheave
2	Steel cable
3	Slider
4	Pin axle
5	Arm lock
6	Lifting arm
7	Tray
8	Down sheave
9	Unlocking steel cable



### 6.1. Daily checking items before operation

The user must perform daily check. Daily check of safety lock system is very important – the discovery of device failure before action could save your time and prevent you from great loss, injury or casualty.

- Before operation, judge whether the safety lock is engaged by sound.
- Check whether oil hose is well connected and whether it leaks or not.
- Check the connections of steel cable and check the power unit.
- Check whether expansion bolts are firmly screwed.
- Check if safety teeth and safety block matched well or not.

### 6.2. Weekly checking items

- Check the flexibility of moving parts.
- Check the working conditions of safety parts.
- Check the amount of oil left in the oil tank. Oil is enough if the carriage can be raised to highest position. Otherwise, oil is insufficient.
- Check whether expansion bolts are firmly screwed.

## 6.3. Monthly checking items

- Check whether expansion bolts firmly screwed.
- Check the tightness of the hydraulic system and screw firm the joints if it leaks.
- Check the lubrication and abrasion circumstance of axial pins, carriages, lifting arms and other related parts and replace in time with new ones if they failed to work well.
- Check the lubrication and abrasion circumstance of steel cable .

## 6.4. Yearly checking items

- Empty the oil tank and check the quality of hydraulic oil.
- Wash and clean the oil filter.

**If the above maintenance requirements are strictly followed, the lift will always keep in a good working condition and meanwhile accidents could be avoided to a large extent.**

# 7.ANNEX

## Annex 1 , Packing List of the whole lift

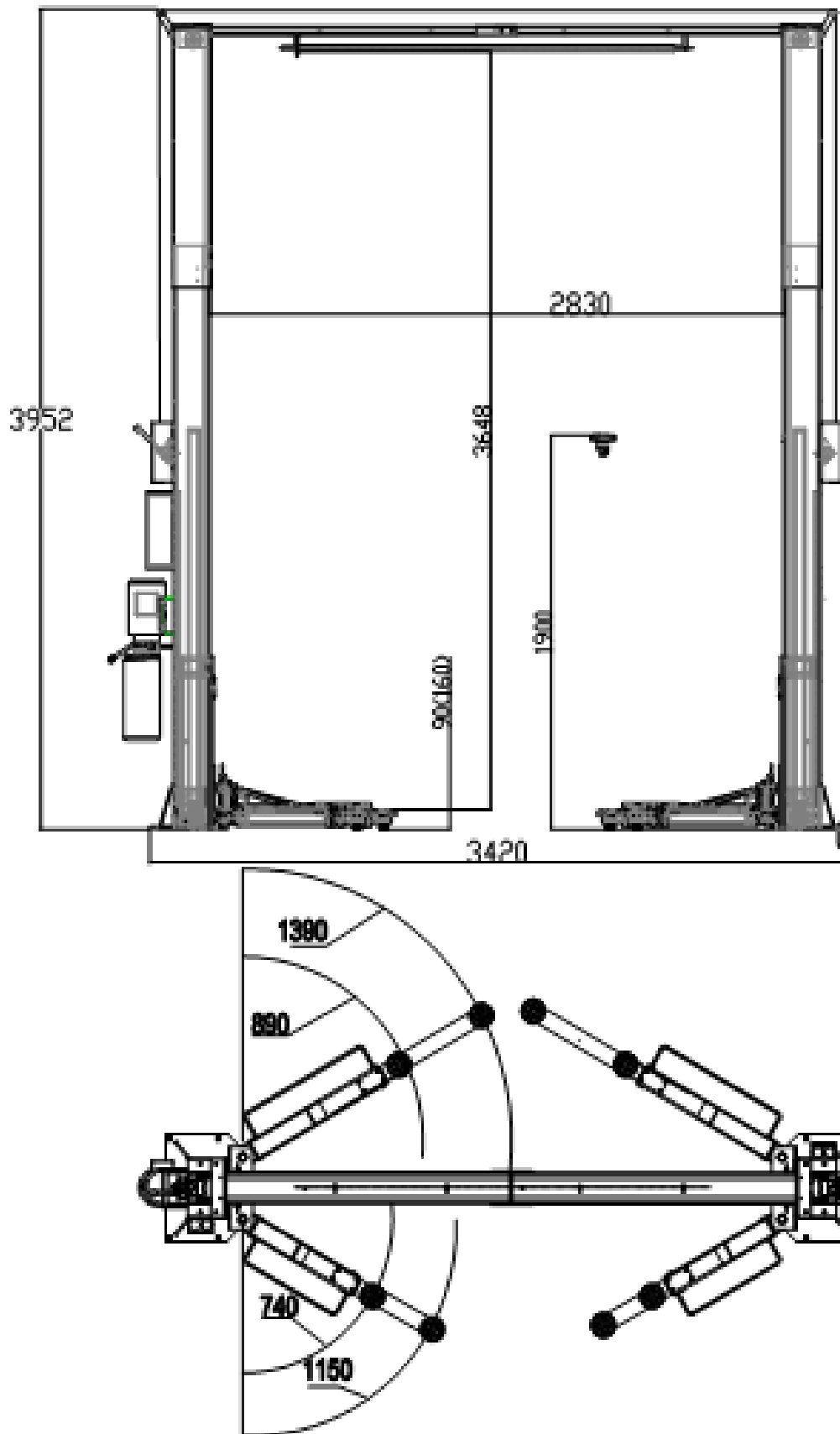
S/N	Name	Drawing#/Size	Material	Qty
1	Post	6214MD-A1	Assembly	2
2	Carriage	6214MD-A2	Assembly	2
3	Long arm	6254E-A7	Assembly	1
4	Short arm	6254E-A8	Assembly	1
5	Packing frame 1	6254E-A30-B1		1
6	Packing frame 2	6254E-A30-B2		1
7	Oil cylinder	6254-A5-B4	Assembly	2
8	Hydraulic pump	6254-A5-B6	Assembly	1
9	Electrical system	6254M-A5	Assembly	1
10	Beam (inside)	6214-A21-B2	Welding	1
11	Beam (outside)	6214-A21-B4	Welding	1
12	Long rod (with seam)	6214-A21-B5	Q235-A	1
13	Steel cable L=10840	6214-A6	Assembly	2
14	Extending post	6214-A20	Q235-A	2
15	The carton includes the following			
	Rubber pad	6254-A7-B10	Rubber	2
	Short oil hose L=400	6214-A5-B1	Assembly	1
	Protection cloth	6214-A1-B3		2
	Pulling rod of protection cloth	6254-A1-B6	Q235A	4
	Tray assembly	6254E-A7-B4	Assembly	4
	Long arm fender	6254-A7-B5	Assembly	2
	Fender	6254S-A9-B3	Welding	2
	Height adapter	6254E-A11	Q235A	4
	Pin shaft	6254E-A12	Assembly	4
	Long rod bracket	6214-A21-B1	Welding	1
	Long oil hose fixer		Q235A	6
	Short oil hose fixer		Q235A	13
	Outside hex bolt	M10*30	Standard	4
	Outside hex bolt	M6*35	Standard	1
	Inside hex bolt	M12*16	Standard	2
	Inside hex bolt	M8*12	Standard	8

## VEHICLE LIFT SPECIALIST

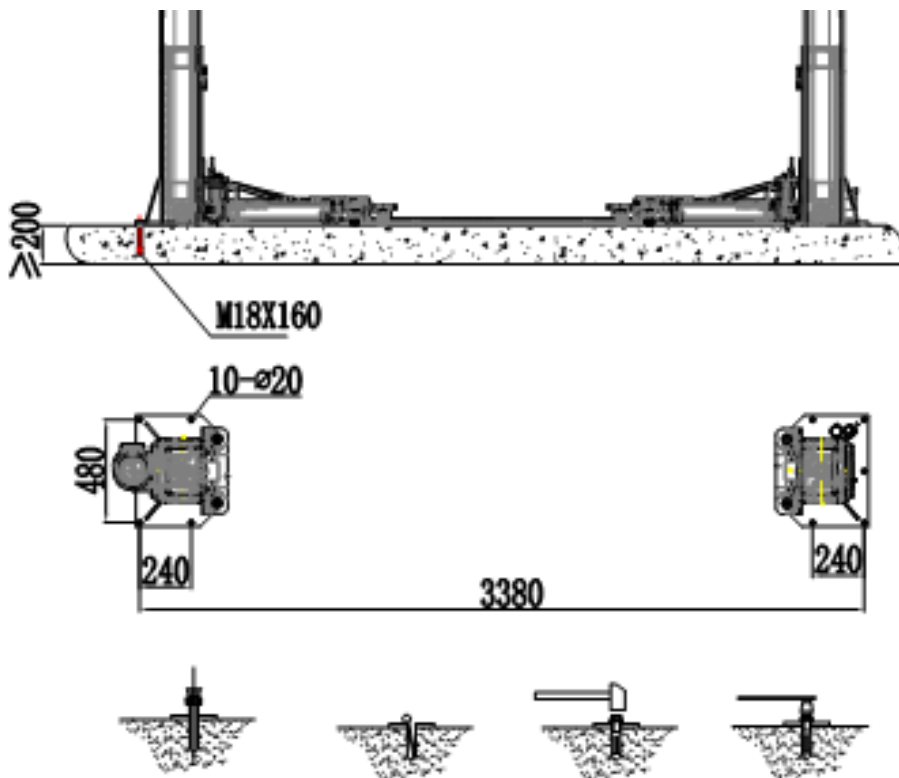
	Cross sunken headed bolt		Standard	4
	Cross round headed bolt		Standard	23
	Spring washer	M6	Standard	9
	Flat washer	M6	Standard	23
	Flat washer	M10	Standard	4
	Spring washer	M10	Standard	4
	Spring washer	M12	Standard	4
	Nut	M10	Standard	4
	Nut	M6	Standard	9
	Circlip	25	Standard	9
	Expansion bolt	M18*160	Standard	10
	Outside hex bolt	M14X25	Standard	21
	Spring washer	M14	Standard	21
	Flat washer	M14	Standard	21
	Nut	M14	Standard	21

### Annex2 , Overall diagram

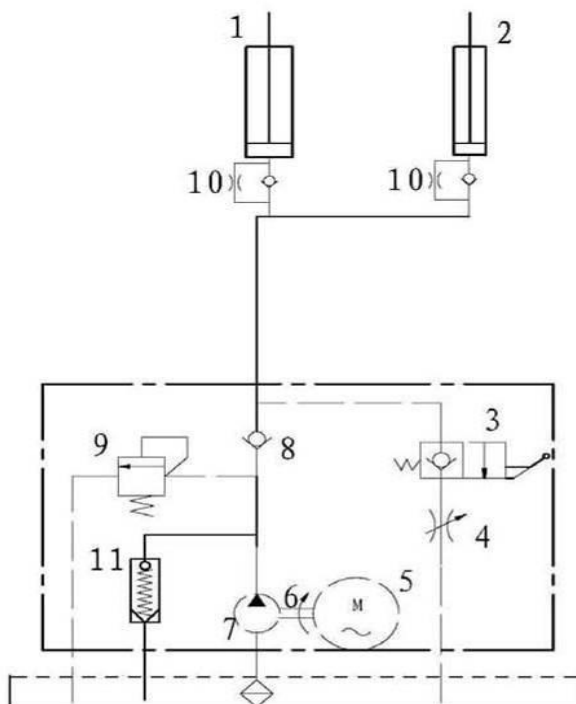




Annex3 , Diagram for ground fixing

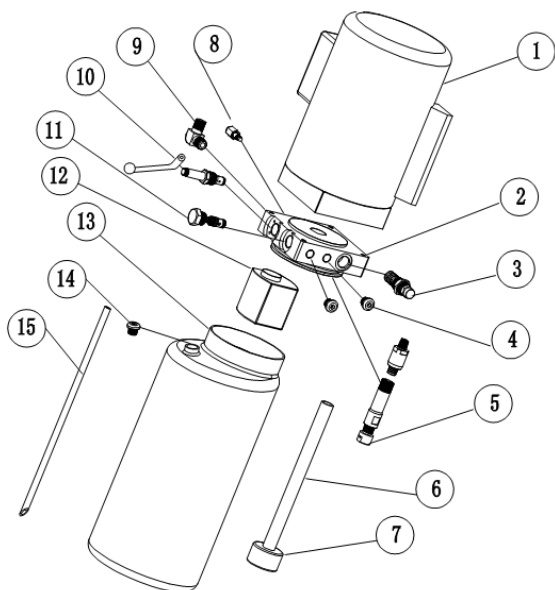


#### Annex 4 , Hydraulic working system



1. Main cylinder
2. Assistant cylinder
3. Manual unloading valve
4. Throttle valve
5. Motor
6. Coupling
7. Gear pump
8. Single-way valve
9. Overflow valve
10. Anti-surge valve
11. Cushion valve

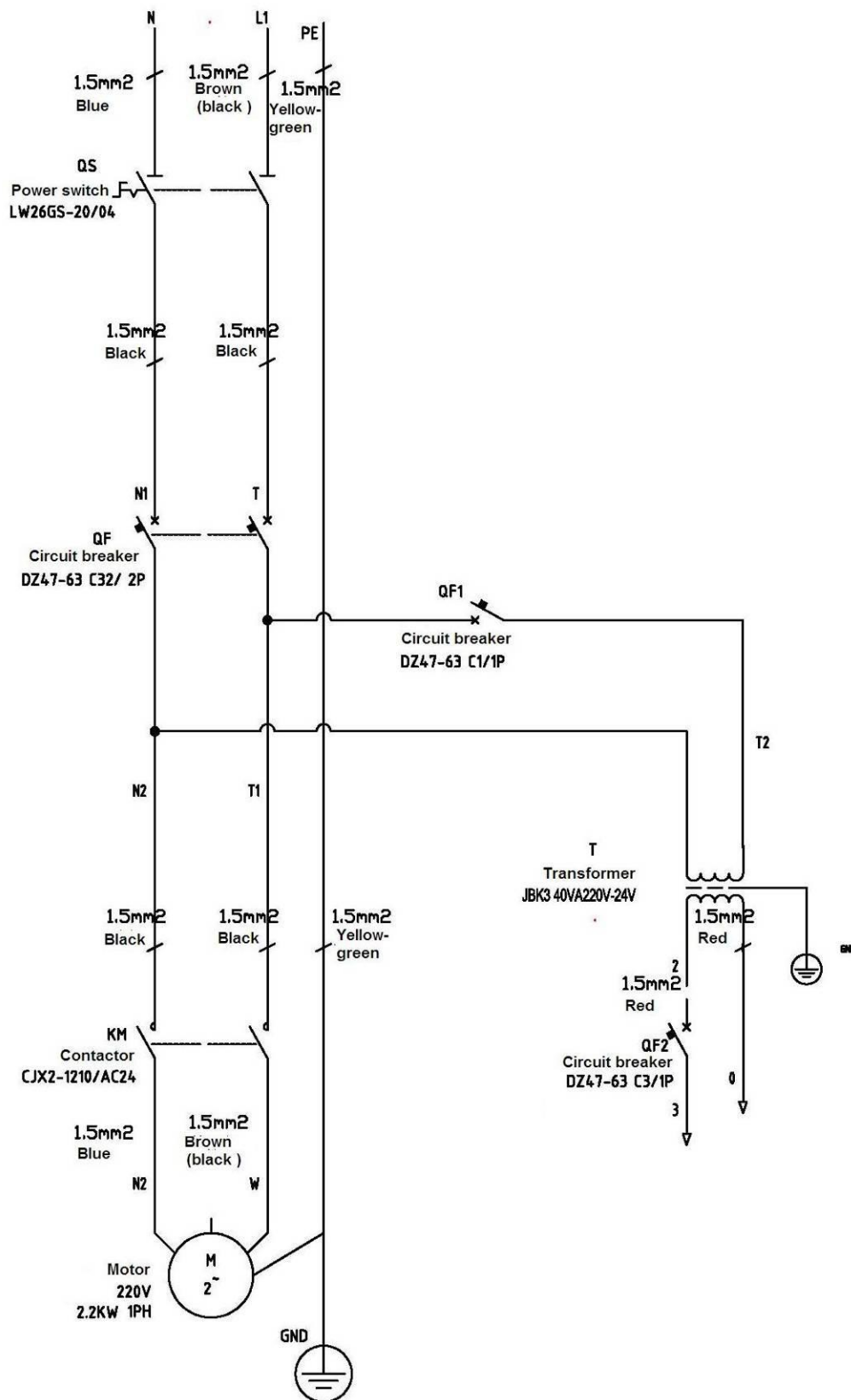
## VEHICLE LIFT SPECIALIST



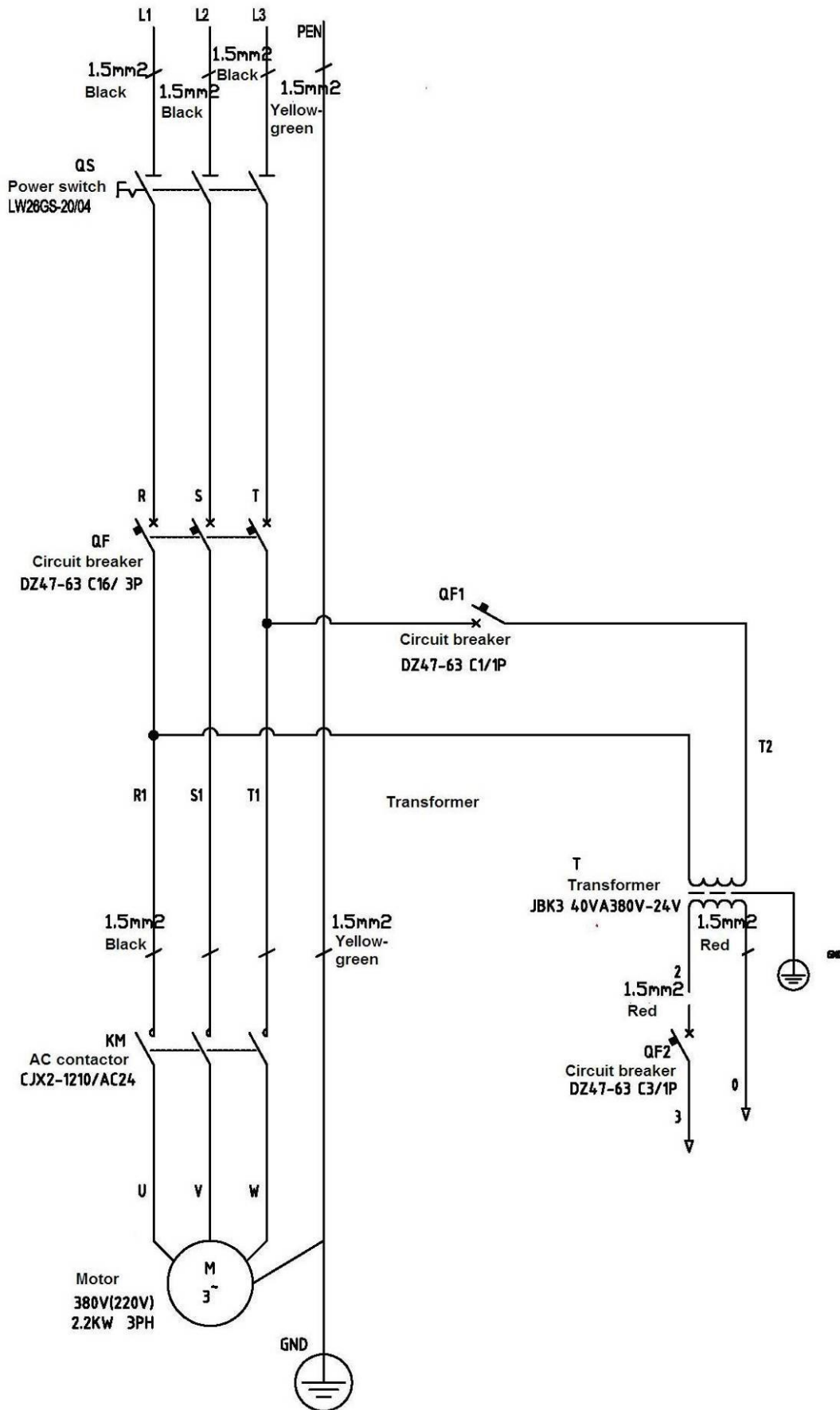
S/N	Description	Qty
1	Motor	1
2	Hydraulic block	1
3	Overflow valve	1
4	Fitting	2
5	Cushion valve	1
6	Absorbing oil pipe	1
7	Oil filter	1
8	Throttle valve	1
9	Oil hose tie-in	1
10	Manual unloading valve	1
11	One way valve	1
12	Gear pump	1
13	Oil tank	1
14	Oil tank cover	1
15	Oil back pipe	1

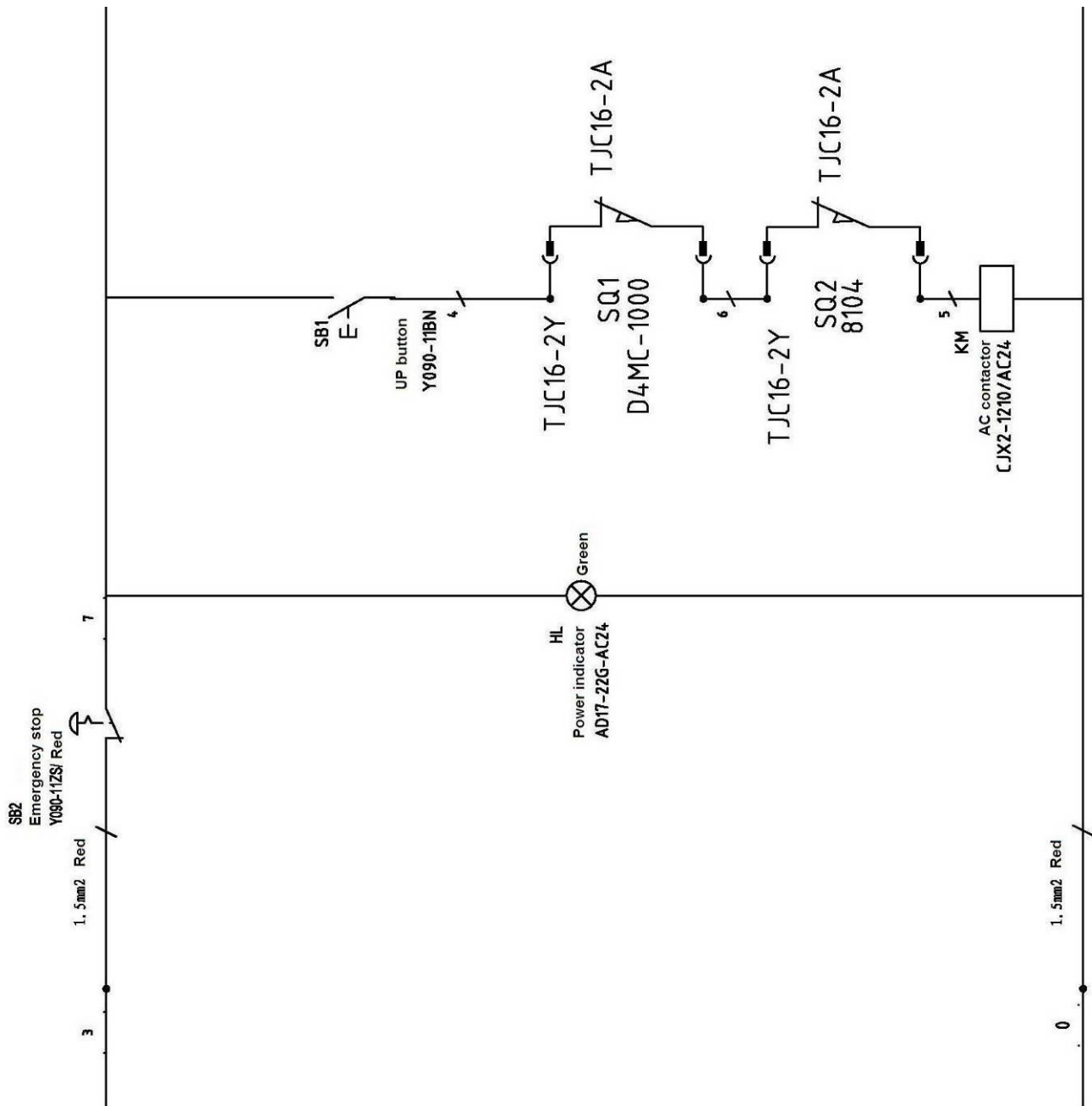
# Annex5 , Wiring diagram

## Single phase



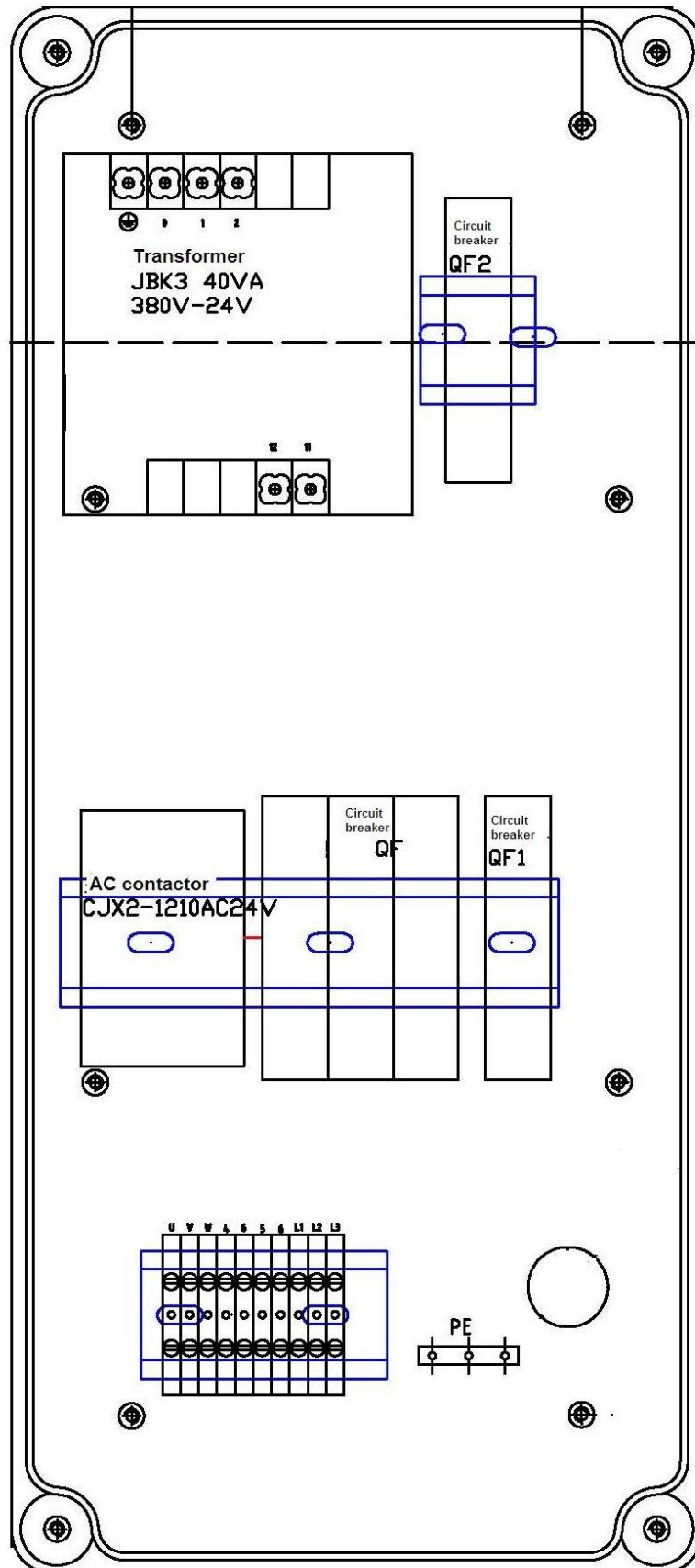
**Three phase**





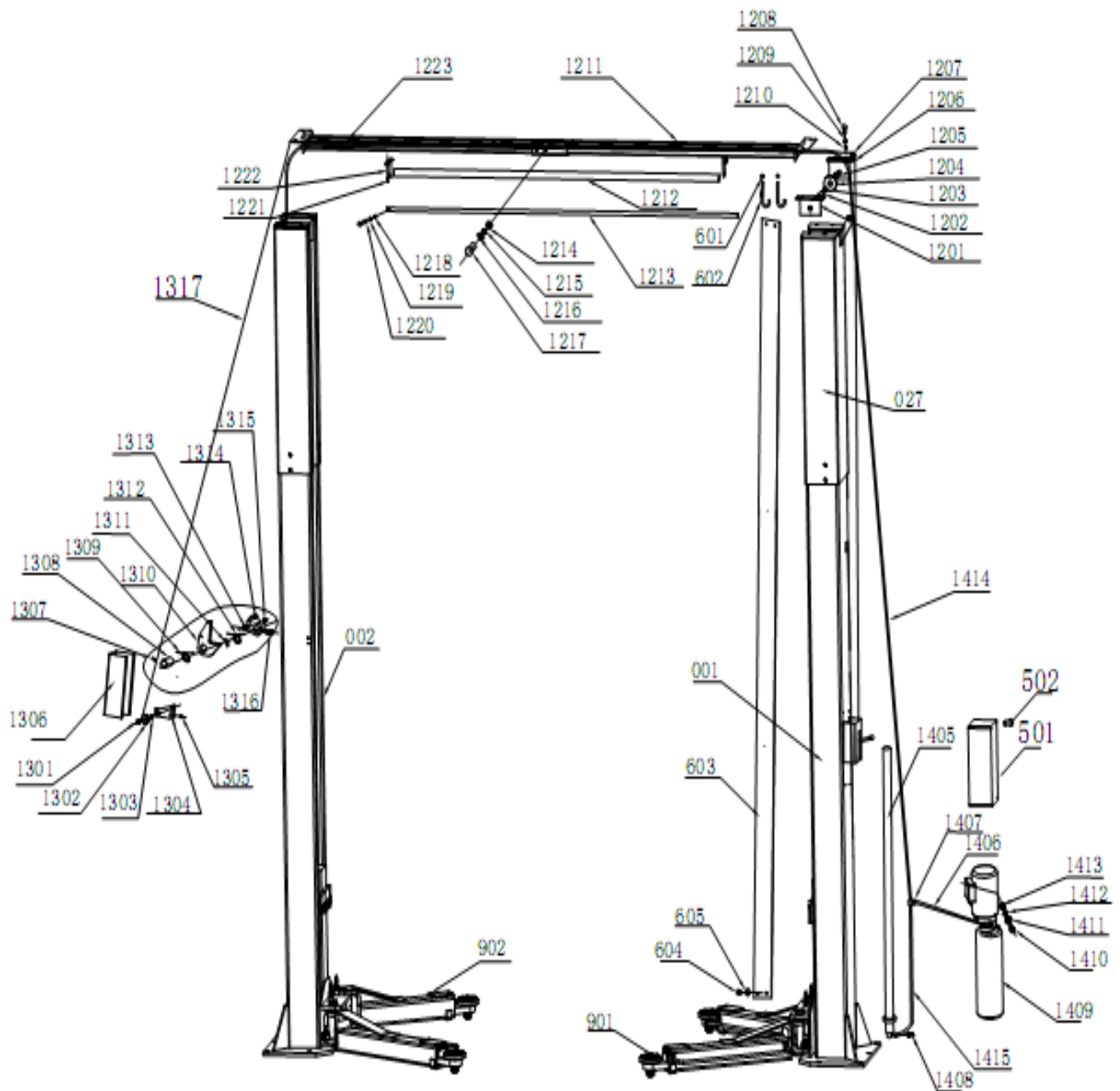






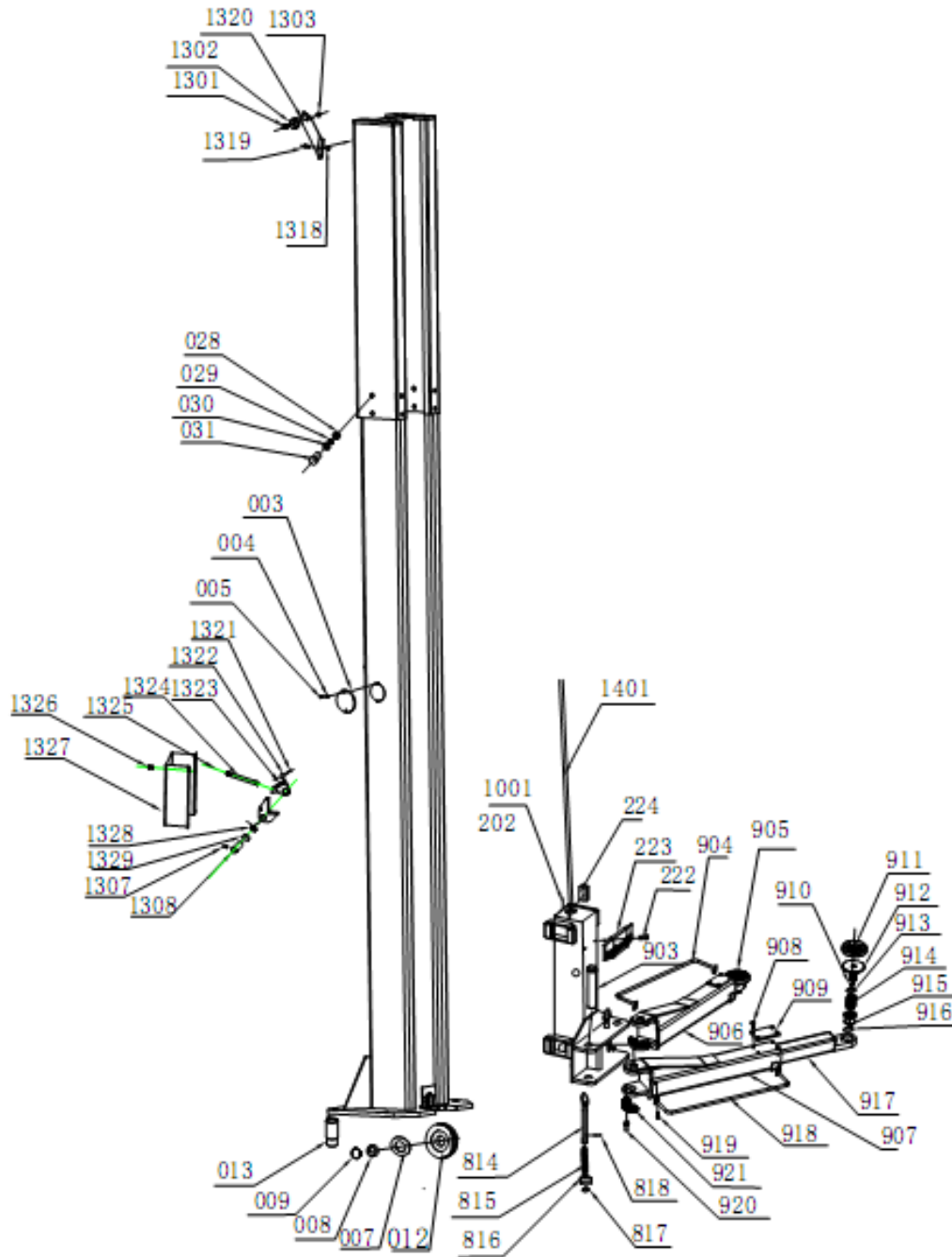


## Annex6, Separate diagrams for the lift





# VEHICLE LIFT SPECIALIST



S/N	Material #	Name	Drawing #	Qty	Description
1	614010005	Main post	EE-6214MD-A1	1	Assembly
2	614010006	Assistant post	EE-6214MD-A2	1	Assembly
3	410010013	Cover plate	EE-6254A-A1-B4	2	Q235A
4	204101004	Flat washer 6		4	Standard
5	202101027	Cross bolt	M6*8	4	Standard
12	410040031	Down sheave	EE-6254E-A1-B2	2	45#
7	205101007	Bushing 2512	SF-1	2	Standard
8	410010031	Washer	EE-6254A-A1-B2	4	Q235A
9	204301009	Circlip25	GB/T894.1-1986	2	Standard
13	612004003	Height adapter	EE-6254E-A11	4	Welding
27	614006007	Extending post	EE-6214A-A20	2	Welding
28	203101008	Nut M14	GB/T14-2000	16	Standard

## VEHICLE LIFT SPECIALIST

S/N	Material #	Name	Drawing #	Qty	Description
29	204101006	Flat washer 14		16	Standard
30	204201007	Spring washer 14	GB/T93-1987	16	Standard
31	201102035	Bolt M14*25	GB/T5780-2000	16	Standard
1201	410080013	Left bracket	EE-6214A-A22-B1	2	Q235A
1202	410060031	Shaft for up sheave	EE-6214A-A22-B2	2	45#
1203	205101008	Bushing 2518	SF-1	4	Standard
1204	410010061	Up sheave	EE-6254A-A3-B1	4	45#
1205	204101011	Flat washer 20	GB/T95-1985	4	Standard
1206	410080023	Right bracket	EE-6214A-A22-B3	2	Q235A
1207	203101012	Hex bolt M20	GB/T41-1986	4	Standard
1208	204101007	Flat washer 12	GB/T95-1985	8	Standard
1209	204201006	Spring washer 12	GB/T93-1987	8	Standard
1210	201102027	Bolt M12*30	GB/T5780-2000	8	Standard
1211	614006006	Outside beam	EE-6214A-A21-B4	1	Welding
1212	410080033	Long rod	EE-6254A-A21-B5	1	Q235A
1213	420060010	Protection sheath	EE-6214A-A21-B3	1	Foam
1214	203101008	Nut M14	GB/T41-2000	5	Standard
1215	204101008	Flat washer 14	GB/T95-85	5	Standard
1216	204201007	Spring washer 14	GB/T98-1987	5	Standard
1217	201102034	Outside hex bolt M14*25	GB/T93-2000	5	Standard
1218	203101004	Nut M6	GB/T93-1987	1	Standard
1219	204101004	Flat washer 6	GB/T93-1987	1	Standard
1220	201102009	Outside hex bolt M6*30	GB/T95-2000	1	Standard
1221	202101029	Cross round headed bolt	M6*12	2	Standard
1222	614006004	Long rod bracket	EE-6214A-A21-B1	1	Welding
1223	614006005	Inside beam	EE-6214A-A21-B2	1	Welding
	614008003	Carriage	EE-6254-A7-B8	2	Welding
814	410040210	Pulling rod	EE-6254E-A2-B1	4	Welding
815	410150121	Pressure spring	EE-6215-A3-B5	4	Standard
816	410150111	Teeth block	EE-6215-A3-B3	4	Q235A
817	204301002	Circlip22		4	Standard
818	206102006	Elastic post pin	5*35	4	Standard
222	202103023	Cross flat head bolt	M8*25	4	Standard
223	420010020	Rubber pad	EE-6254A-A7-B10	2	Rubber
224	420010010	Slider	EE-6254A-A7-B1	16	Nylon 1010
1401	615006002	Steel lock	EE-6214A-A6	2	Assembly
501		Electrical system			Assembly
502	202101022	Cross pan head screw M5*10	GB/T818-2000	4	Standard
901	615004004	Short arm	EE-6254E-A8	1	Assembly
902	615004005	Long arm	EE-6254E-A7	2	Assembly
903	410010031	Pin shaft	EE-6254E-A12	4	Assembly
904	614004013	Short arm fender	EE-6254S-A8-B2	2	Welding
905	410010031	Long tensile arm	EE-6254E-A7-B3	2	Welding
906	410010031	Long arm	EE-6254E-A7-B1	2	Welding
907	614004008	Short arm	EE-6254E-A8-B1	2	Welding
908	202103019	Cross flat headed bolt	M8*10	16	Standard
909	410010131	Rubber pad	EE-6254E-A7-B2	4	Rubber
910	204302003	Circlip 26		4	Standard
911	420040010	Rubber pad	EE-6254E-A7-B4-C4	4	Rubber

# VEHICLE LIFT SPECIALIST

S/N	Material #	Name	Drawing #	Qty	Description
912	612004002	Lifting tray	EE-6254E-A7-B4-C1	4	Welding
913	204302004	Circlip 38		8	Standard
914	410040041	Swivel nut	EE-6254E-A7-B4-C2	4	Q235A
315	410040051	Inside swivel nut	EE-6254E-A7-B4-C3	4	Q235A
916	204301016	Circlip 50	GB/T894.1-1986	4	Standard
917	614004010	Short tensile arm	EE-6254E-A8-B2	2	Welding
918	614004013	Short arm fender	EE-6254S-A9-B3	2	Welding
919	202109027	Inside hex bolt	M8*12	8	Standard
920	202109041	Inside hex bolt	M10*20	12	Standard
921	410150131	Semi-circled teeth block	EE-6215-A4-B3	4	Q235A
1301	201102009	Outside hex bolt M6*30	GB/T6172.2-2000	1	Standard
1302	410150171	Gilding wheel	EE-6215-A9-B2	3	Q235A
1303	203103005	Self-lock nut M6	GB/T5781-2000	3	Standard
1304	410150181	Gilding bracket	EE-6215-A9-B1	2	Q235A
1305	201102007	Outside hex bolt M6*12	GB/T5781-2000	2	Standard
1306	614015005	Protection cover	EE-6215-A2-B3	1	Welding
1307	202111001	Bolt M6*8	GB/T5818-85	4	Standard
1308	410150041	Shaft	EE-6215-A1-B6	2	45#
1309	410150051	Torsion spring I	EE-6215-A1-B7	2	65Mn
1310	410150160	Safety hook	EE-6215-A1-B4	2	Welding
1311	410150061	Circlip	EE-6215-A1-B8	2	Q235A
1312	410150071	Torsion spring II	EE-6215-A2-B2	1	65Mn
1313	410150081	Small shaft	EE-6215-A2-B4	1	Q235A
1314	410150031	Unlocking plate	EE-6215-A1-B5-C2-D1	1	Q235A
1315	410150091	Nut	EE-6215-A2-B5	1	Q235A
1316	410150101	Adjustable bolt	EE-6215-A2-B6	1	Q235A
1317	N/A	Hole for steel cable 3*9400		1	Welding
1318	203101004	Nut M6	GB/T5781-2000	4	Standard
1319	201102008	Outside hex bolt M6*15	GB/T5781-2000	4	Standard
1320	410150191	Gilding bracket for unlocking	EE-6215-A10-B1	2	Q235A
1321	201102009	Outside hex bolt M6*30	GB/T5781-2000	3	Standard
1322	203101004	Nut M6	GB/T41-2000	3	Standard
1323	612015002	Unlock assembly	EE-6215-A1-B5-C2	1	Welding
1324	410150021	Handle for unlocking	GB/T7271-2000	1	Standard
1325	208105001	Handle ball 32*10	GB/T7271-2000	1	Standard
1326	202101027	Cross round headed bolt M6*8	GB/T5818-85	8	Standard
1327	410150071	Main protection cover	EE-6215-A2-B3	1	Welding
1328	410150071	Torsion spring II	EE-6215-A2-B2	1	65Mn
1329	410150061	Circlip	EE-6215-A1-B8	1	Q235A
1405	615015002	Oil cylinder	EE-6215-A7-B1	2	Assembly
1406	624001042	Short oil hose L=400	EE-6215-A5-B1	1	Assembly
1407	615015003	Three way tie-in	EE-6214-A5-B2	1	Assembly
1408	615015003	Connector	EE-6215-A7-B2	2	Assembly
1409	N/A	Hydraulic pump	EE-6215-A7	1	Assembly
1410	201102019	Outside hex bolt M10*30	GB/T5781-2000	4	Standard
1411	204101006	Flat washer 10	GB/T95-85	4	Standard
1412	204201005	Spring washer 10	GB/T95-85	4	Standard
1413	203101006	Nut M10	GB/T95-85	4	Standard
1414	410083020	Long oil hose L=10000	EE-6215-A11	1	Assembly

## VEHICLE LIFT SPECIALIST

S/N	Material #	Name	Drawing #	Qty	Description
1415	624001060	Oil hose L=700	EE-6214MD-A6	1	Assembly
601	203101004	Nut M6		8	Standard
602	410010051	Pulling rod of protection cloth	EE-6254A-A1-B6	4	Welding
603	615006001	Protection cloth	EE-6214A-A1-B5	2	Q235A
604	204101004	Flat washer 6		8	Standard
605	202101027	Cross sunken head bolt	M6*8	8	Standard

### Annex7 Spare part list

#### Spare parts for the electrical system

S/N	Material No.	Name	Spec.	Unit	Qty	Note
1	320304001	Power switch	LW26GS-20/04	Pcs	1	
2	320401001	Button	Y090-11BN	Pcs	3	
3	321201001	Power indicator	AD17-22G-AC24	Pcs	1	
4	320101001	Transformer	JBK3-40VA220V-24V	Pcs	1	Same outlook as item 7
5	320101002	Transformer	JBK3-40VA230V-24V	Pcs	1	Same outlook as item 7
6	320101003	Transformer	JBK3-40VA240V-24V	Pcs	1	Same outlook as item 7
7	320101004	Transformer	JBK3-40VA380V-24V	Pcs	1	
8	320101005	Transformer	JBK3-40VA400V-24V	Pcs	1	Same outlook as item 7
9	320101006	Transformer	JBK3-40VA415V-24V	Pcs	1	Same outlook as item 7
10	320901001	AC contactor	CJX2-1210/AC24	Pcs	1	
11	320801001	Circuit breaker	DZ47-63 C16 /3P	只	1	



## VEHICLE LIFT SPECIALIST

S/N	Material No.	Name	Spec.	Unit	Qty	Note
12	320802001	Circuit breaker	DZ47-63 C32 /2P	Pcs	1	
13	320803003	Circuit breaker	DZ47-63 C3 /1P	Pcs	1	
14	320803001	Circuit breaker	DZ47-63 C1 /1P	Pcs	1	Same outlook as item 13
15	320301002	Limit switch	D4MC1000	Pcs	1	
16	320301009	Limit switch	ME8104	Pcs	1	
17	320402001	Emergency stop	Y090-11ZS/Red	Pcs	1	
18	321204003	Control box	190*430*135	Pcs	1	

### Spare part for the mechanical part

S/N	Name	Drawing#	Qty	Description
3	Cover plate	EE-6254A-A1-B4	2	Q235A
1212	Long rod	EE-6254A-A21-B5	1	Q235A
1213	Protection sheath	EE-6214A-A21-B3	1	Foam
1222	Long rod bracket	EE-6214A-A21-B1	1	Welding
814	Pulling rod	EE-6254E-A2-B1	4	Welding
815	Pressure spring	EE-6215-A3-B5	4	Standard
223	Rubber pad	EE-6254A-A7-B10	2	Rubber
224	Slider	EE-6254A-A7-B1	16	Nylon 1010
909	Rubber pad	EE-6254E-A7-B2	4	Rubber
1304	Gilding bracket I for unlocking handle	EE-6215-A9-B1	2	Q235A
1309	Torsion spring I	EE-6215-A1-B7	2	65Mn
1311	Circlip	EE-6215-A1-B8	2	Q235A
1312	Torsion spring II	EE-6215-A2-B2	1	65Mn
1313	Short shaft	EE-6215-A2-B4	1	Q235A

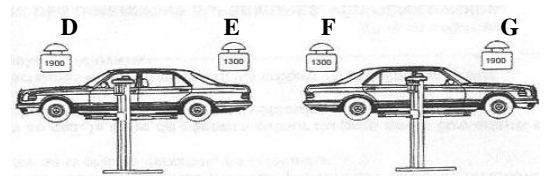
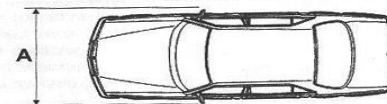
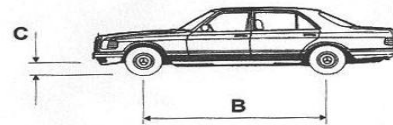
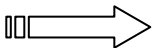
## VEHICLE LIFT SPECIALIST

S/N	Name	Drawing#	Qty	Description
1314	Unlocking plate	EE-6215-A1-B5-C2-D1	1	Q235A
1315	Nut	EE-6215-A2-B5	1	Q235A
1316	Adjustable bolt	EE-6215-A2-B6	1	Q235A
1317	Hole for steel cable 3*9400		1	Welding
1320	Gilding bracket I for unlocking handle	EE-6215-A10-B1	2	Q235A
1323	Unlocking assembly	EE-6215-A1-B5-C2	1	Welding
1324	Unlocking handle	GB/T7271-2000	1	Standard
1325	Ball of Unlocking handle 32*10	GB/T7271-2000	1	Standard
1328	Torsion spring II	EE-6215-A2-B2	1	65Mn
1329	Circlip	EE-6215-A1-B8	1	Q235A
1406	Oil hose L=400	EE-6215-A5-B1	1	Assembly
1407	Three way tie-in	EE-6214-A5-B2	1	Assembly
1408	Connector	EE-6215-A7-B2	2	Assembly
1414	Long oil hose L=10000	EE-6215-A11	1	Assembly
1415	Oil hose L=700	EE-6214MD-A6	1	Assembly
602	Pulling rod	EE-6254A-A1-B6	4	Welding
603	Protection cloth	EE-6214A-A1-B5	2	Q235A

Model No.	A (mm)	B (mm)	C (mm)	D (T)	E (T)	F (T)	G (T)
EE-6214D	2400	2900	100	2.3	1.7	1.7	2.3

**Ann  
ex 8 ,  
Size**

**and weight requirements on vehicles**



Profile of the hydraulic block

